



GOVERNMENT OF  
BERMUDA

What are you looking for?



[Click here for Coronavirus \(COVID-19\) Information and Updates](#) | [Check on your health today, visit HealthIQ](#) | [Apply for the Bermuda Travel Authorisation](#)

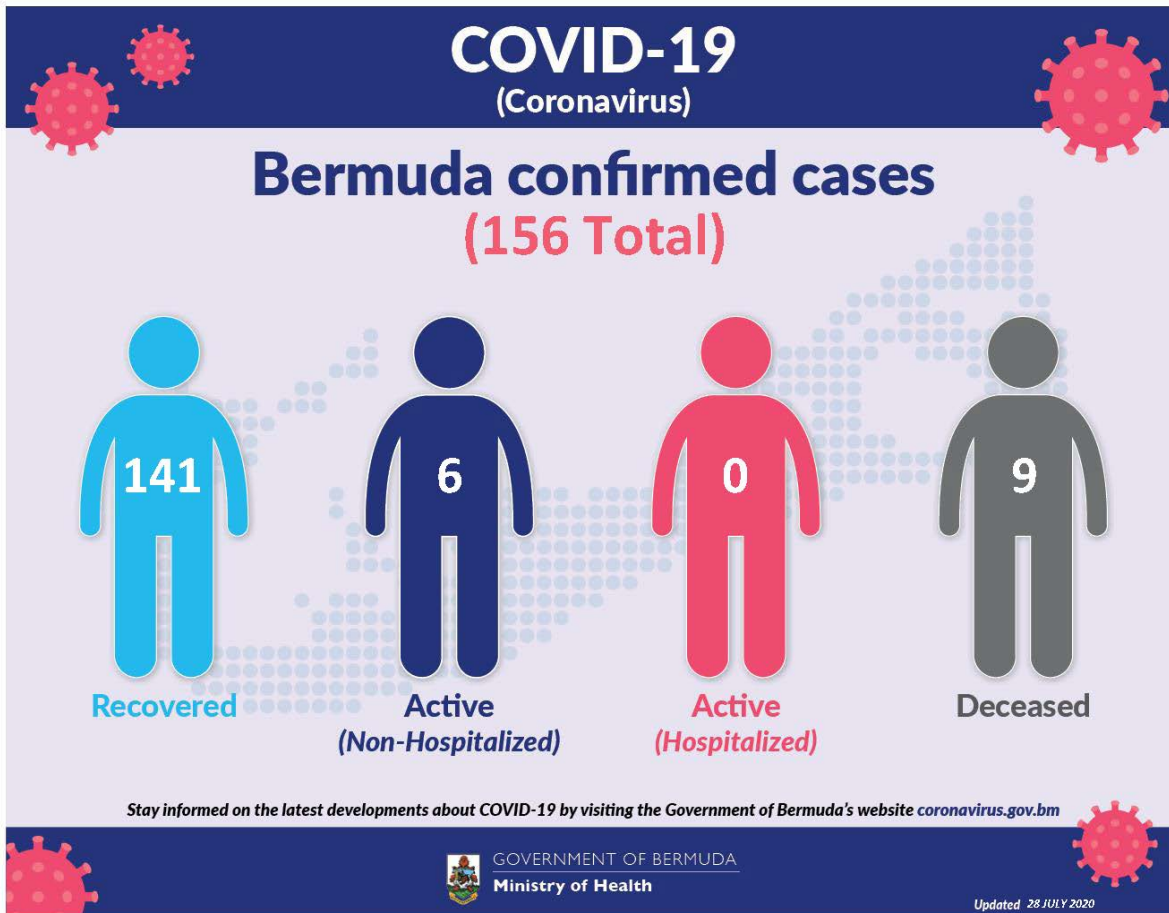
## Coronavirus (COVID-19) update

The current World Health Organization risk assessment for novel coronavirus (COVID-19) is very high risk globally. It is advised that all countries prepare for the possibility of COVID-19 in their communities. Everyone has a role to play in getting ready and staying healthy by practicing everyday prevention measures like frequent hand washing, staying home when sick and covering coughs and sneezes. The World Health Organization has declared the current coronavirus situation as a pandemic. A pandemic is the increased and sustained transmission of a disease across many countries.

Surveillance for respiratory illness has been enhanced in collaboration with local public health partners. Persons with respiratory illness including fever and cough should call ahead and inform their health care provider of their travel history prior to attending for medical care.

This is a rapidly changing situation. Please regularly check this page for updates.

[COVID-19 Dashboard 27 July, 2020](#) 



Data as of 3:00 pm 28 July 2020

COVID-19 Testing	Total
Total	20962
Results negative	20806
Results positive	156
<b>Transmission Status of Confirmed Cases</b>	
Imported	52
Local Transmission [Known contact/source]	85
Local Transmission [Unknown contact/source]	19
Under Investigation	0
<b>Status of Confirmed Cases</b>	
Recovered	141
Active (non-hospitalized)	6

Active (hospitalized)	0
Deceased	9

**Imported:** Cases acquired outside of Bermuda.

**Local transmission:** Cases acquired within Bermuda

**Under investigation:** Type of transmission has not yet been determined. These cases are not imported and are likely the result of local transmission.

**Recovered:** Person has had no fever for at least 72 hours (3 days) without the use of fever-reducing medication, other symptoms have improved and at least 14 days have passed since onset of symptoms or testing date. Laboratory confirmation of at least one negative result may also be used as evidence of recovery.

**Country status:** Sporadic Cases

## COVID-19 Reopening Indicators

Bermuda is monitoring critical indicators to see how we are doing in managing COVID-19 and assess our readiness to move to the next phase of our reopening plan. These indicators are updated on Mondays and Thursday.

As of 27th July 2020:

### Lead Measures As of 27th July 2020

*"How Bermuda is doing; monitor bi-weekly to indicate likelihood of movement to the next phase"*

#### Preventive Behaviours



Face mask wearing	<div style="width: 100%; height: 10px; background-color: red;"></div>
<i>HealthIQ Reports on observation of mask wearing</i>	
Physical Distancing	<div style="width: 100%; height: 10px; background-color: red;"></div>
<i>HealthIQ Reports on observation of 3 – 6ft physical distancing</i>	
Adoption of technology	<div style="width: 100%; height: 10px; background-color: green;"></div>
<i>Number of people participating in Health IQ / other apps</i>	

#### Capacity



Testing capacity	<div style="width: 100%; height: 10px; background-color: yellow;"></div>
<i>In stock of all lab consumables, reagents and kits plus enabling resources: staff &amp; PPE</i>	
PPE supplies	<div style="width: 100%; height: 10px; background-color: red;"></div>
<i>In stock of: surgical mask, N95 mask, gloves, gowns and face shields</i>	

### Lag Measures

*"How Bermuda has done so far; to confirm at the end of each phase that it is safe to move to the next phase"*

#### Transmission



WHO country classification	<div style="width: 100%; height: 10px; background-color: green;"></div>
<i>WHO country classification</i>	
Transmission	<div style="width: 100%; height: 10px; background-color: yellow;"></div>
<i>Proportion of cases able to be linked to known cases or clusters</i>	
Reproduction rate	<div style="width: 100%; height: 10px; background-color: green;"></div>
<i>Real time reproduction number (average over last 7 days)</i>	

#### Cases and hospitalizations



Hospitalizations	<div style="width: 100%; height: 10px; background-color: green;"></div>
<i>New COVID-related hospitalizations</i>	
Critical care	<div style="width: 100%; height: 10px; background-color: green;"></div>
<i>New COVID cases in critical care</i>	
COVID-19 cases	<div style="width: 100%; height: 10px; background-color: green;"></div>
<i>Number of new cases</i>	

## Definitions

### Lead measures:

**1. Face mask wearing:** HealthIQ Reports on observation of mask wearing –

- >95% report public wearing masks
- <80% report public wearing masks

**2. Physical distancing:** HealthIQ Reports on observation of 3 – 6ft physical distancing –

- >95% report public maintaining distance
- <80% report public maintaining distance

**3. Adoption of Technology:** Number of people participating in HealthIQ or Apps (public) -

- >10,000 unique respondents (All time)
- <5,000 unique respondents

**4. Testing capacity:** In stock of all lab consumables, reagents and kits plus enabling resources: staff & PPE

- >3 months' supply
- <1 months' supply

**5. PPE supplies (critical):** In stock of: surgical mask, N95 mask, gloves, gowns and face shields

- >5 months' supply
- >3 months' supply

### Lag measures:

**6. Classification: WHO Country classification**

- Green: Sporadic cases
- Amber: Local transmission
- Red: Community transmission

**7. Transmission:** Proportion of cases able to be linked to known cases or clusters

- <10% unknown transmission
- >20% unknown transmission

**8. Reproduction rate:** Real time reproduction number average over last 7 days

- $R_t < 1.0$
- $R_t > 1.4$

**9. Hospitalizations:** New COVID-related hospitalizations

- <7 over last 7 days
- >21 over last 7 days

**10. Critical care:** COVID-related ICU cases

- <4 concurrent per week
- >7 concurrent per week

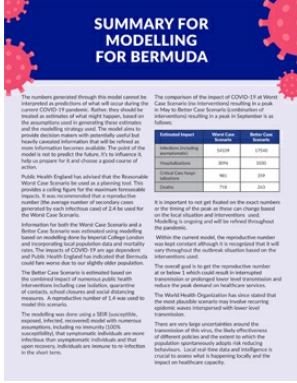
**11. COVID-19 cases:** Number of new cases per week

- <12 over last 7 days
- >35 over last 7 days

## Coronavirus (COVID-19) Modelling Data - 24 April

The numbers generated through this model cannot be interpreted as predictions of what will occur during the current COVID-19 pandemic. Rather, they should be treated as estimates of what might happen, based on the assumptions used in generating these estimates and the modelling strategy used. The model aims to provide decision makers with potentially useful but heavily caveated information that will be refined as more information becomes available. The point of the model is not to predict the future, it's to influence it, help us prepare for it and choose a good course of action.

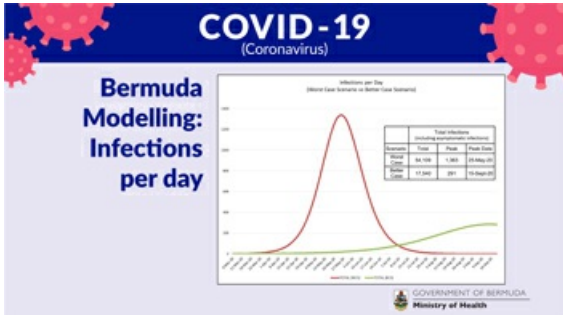
Our analyses on COVID-19 infections, hospitalizations, and testing can be found at the links below:



**SUMMARY FOR MODELLING FOR BERMUDA**

The numbers generated through this model cannot be interpreted as predictions of what will occur during the current COVID-19 pandemic. Rather, they should be viewed as a tool to help inform decision-making and to provide a range of possible outcomes based on the assumptions used in generating these estimates and the modelling strategy used. The model uses a range of assumptions based on information available at the time of writing. It is not intended to provide a prediction of what will occur, but rather to provide a range of possible outcomes based on the assumptions used in generating these estimates.

Parameter	Value	Units
Reproduction Number	2.0	-
Initial Population	64,000	Individuals
Initial Deaths	0	Individuals
Initial Recovered	0	Individuals
Initial Infected	0	Individuals



**COVID-19 (Coronavirus)**

**Bermuda Modelling: Infections per day**

Millions per Day (Bermuda Case Scenario vs Bermuda Case Scenario)

It is important to not get fixated on the exact numbers or the timing of the peak as these can change based on the real situation and intervention used. Modelling is ongoing and will be refined throughout the pandemic.

While the current model, the reproductive number was kept constant at 1.9 to represent the current situation. It is important to get the reproductive number as low as possible through a combination of interventions which could result in a lower peak and a longer tail.

The overall goal is to get the reproductive number as low as possible through a combination of interventions which could result in a lower peak and a longer tail.

Parameter	Value	Units
Reproduction Number	1.9	-
Initial Population	64,000	Individuals
Initial Deaths	0	Individuals
Initial Recovered	0	Individuals
Initial Infected	0	Individuals

GOVERNMENT OF BERMUDA  
Ministry of Health

[Summary for modelling for Bermuda](#)

[Modelling Estimates for Bermuda and Potential impact of Non-Pharmaceutical Interventions \(NPIs\) 24 April 2020](#)

## COVID-19 Health Screening

Welcome to the Health Department's COVID-19 health screening registration form for the Bermuda Government Molecular Diagnostic Testing Laboratory at the old White's Supermarket at Southside. Please choose and register for a timeslot that suits you for your screening. Please ensure to bring your confirmation number with you for your screening. Instructions: Please remain in your car or on your bike, with a mask on and your windows up until directed. Your results will be communicated to you by your doctor.

[Check Availability](#)

[Printer-friendly version](#)

## Contact Information

Ministry of [Health](#)  
Department of [Health Headquarters](#)

### Physical Address

Continental Building  
25 Church Street  
Hamilton HM 12  
Bermuda  
(441) 278-4900

[Send us an email](#)

### Mailing Address

P.O. Box HM 380  
Hamilton HM BX  
Bermuda

## You might be interested in

---

[Guidelines for radioactive equipment](#)

[Health programmes in Bermuda](#)

[The Zika Virus](#)

# BEEN AWAY?

If you feel sick, see a doctor and say where you have travelled.

 GOVERNMENT OF BERMUDA  
Ministry of Health and Seniors  
Department of Health



For general enquiries, [contact us](#)

T. (441) 295-5151

[PATI](#) | [Privacy](#) | [Departments and Ministries](#)

© 2020 Government of Bermuda