



GOVERNMENT OF  
BERMUDA

What are you looking for?



[Click here for Coronavirus \(COVID-19\) Information and Updates](#)

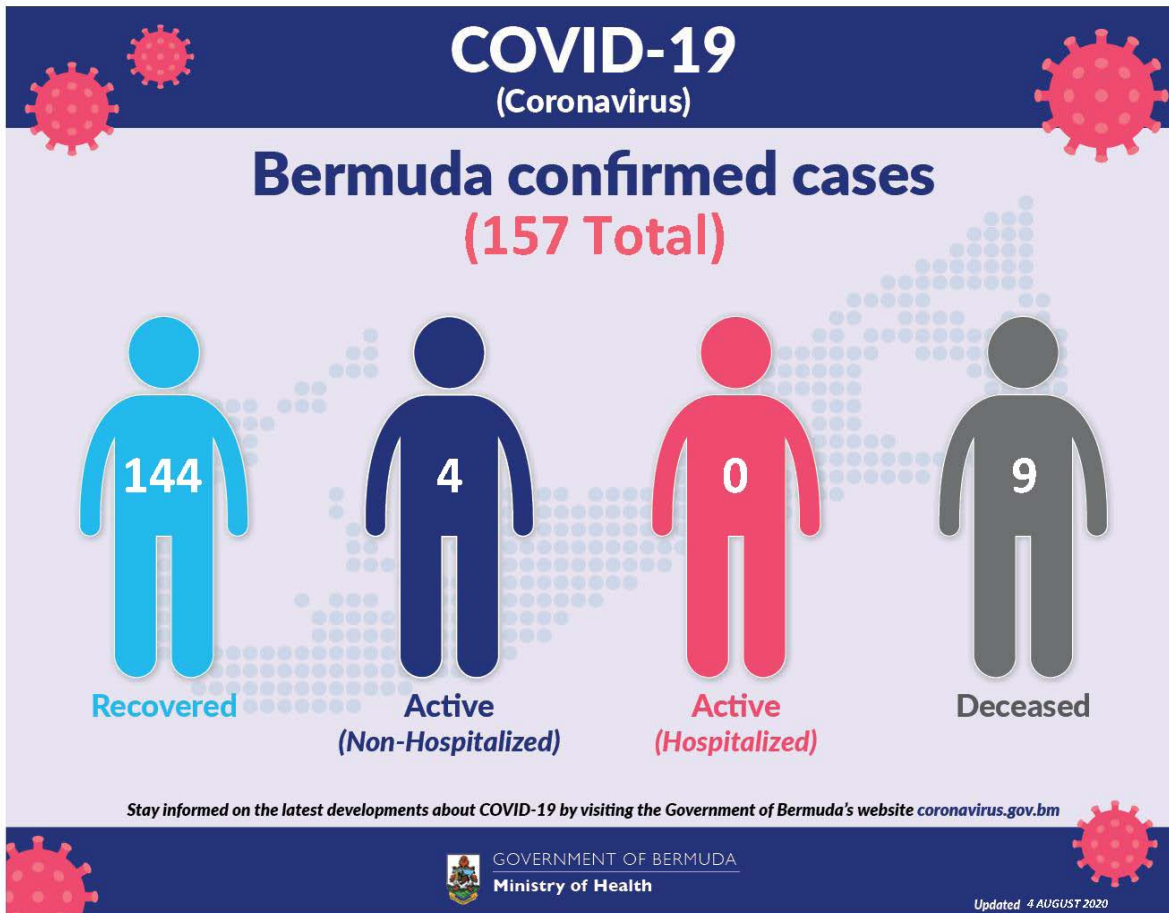
[Apply for Work From Bermuda One Year Residential Certificate](#) | [Apply for the Bermuda Travel Authorisation](#)

## Coronavirus (COVID-19) update

The current World Health Organization risk assessment for novel coronavirus (COVID-19) is very high risk globally. It is advised that all countries prepare for the possibility of COVID-19 in their communities. Everyone has a role to play in getting ready and staying healthy by practicing everyday prevention measures like frequent hand washing, staying home when sick and covering coughs and sneezes. The World Health Organization has declared the current coronavirus situation as a pandemic. A pandemic is the increased and sustained transmission of a disease across many countries.

Surveillance for respiratory illness has been enhanced in collaboration with local public health partners. Persons with respiratory illness including fever and cough should call ahead and inform their health care provider of their travel history prior to attending for medical care.

This is a rapidly changing situation. Please regularly check this page for updates.



## COVID-19 Dashboard 04 August 2020

Data as of 4:00 pm 04 August 2020

COVID-19 Testing	Total
Total	24963
Results negative	24806
Results positive	157
<b>Transmission Status of Confirmed Cases</b>	
Imported	53
Local Transmission [Known contact/source]	85
Local Transmission [Unknown contact/source]	19
Under Investigation	0
<b>Status of Confirmed Cases</b>	
Recovered	144

Active (non-hospitalized)	4
Active (hospitalized)	0
Deceased	9

**Imported:** Cases acquired outside of Bermuda.

**Local transmission:** Cases acquired within Bermuda

**Under investigation:** Type of transmission has not yet been determined. These cases are not imported and are likely the result of local transmission.

**Recovered:** Person has had no fever for at least 72 hours (3 days) without the use of fever-reducing medication, other symptoms have improved and at least 14 days have passed since onset of symptoms or testing date. Laboratory confirmation of at least one negative result may also be used as evidence of recovery.

**Country status:** Sporadic Cases

## **COVID-19 Reopening Indicators**

Bermuda is monitoring critical indicators to see how we are doing in managing COVID-19 and assess our readiness to move to the next phase of our reopening plan. These indicators are updated on Mondays and Thursday.

As of 3rd August 2020:

## Lead Measures

As of 3rd August 2020

"How Bermuda is doing; monitor bi-weekly to indicate likelihood of movement to the next phase"

### Preventive Behaviours



Face mask wearing	<div style="width: 100%; height: 10px; background-color: red;"></div>
<i>HealthIQ Reports on observation of mask wearing</i>	
Physical Distancing	<div style="width: 100%; height: 10px; background-color: red;"></div>
<i>HealthIQ Reports on observation of 3 – 6ft physical distancing</i>	
Adoption of technology	<div style="width: 100%; height: 10px; background-color: green;"></div>
<i>Number of people participating in Health IQ / other apps</i>	

### Capacity



Testing capacity	<div style="width: 100%; height: 10px; background-color: red;"></div>
<i>In stock of all lab consumables, reagents and kits plus enabling resources: staff &amp; PPE</i>	
PPE supplies	<div style="width: 100%; height: 10px; background-color: red;"></div>
<i>In stock of: surgical mask, N95 mask, gloves, gowns and face shields</i>	

## Lag Measures

"How Bermuda has done so far; to confirm at the end of each phase that it is safe to move to the next phase"

### Transmission



WHO country classification	<div style="width: 100%; height: 10px; background-color: green;"></div>
<i>WHO country classification</i>	
Transmission	<div style="width: 100%; height: 10px; background-color: yellow;"></div>
<i>Proportion of cases able to be linked to known cases or clusters</i>	
Reproduction rate	<div style="width: 100%; height: 10px; background-color: green;"></div>
<i>Real time reproduction number (average over last 7 days)</i>	

### Cases and hospitalizations



Hospitalizations	<div style="width: 100%; height: 10px; background-color: green;"></div>
<i>New COVID-related hospitalizations</i>	
Critical care	<div style="width: 100%; height: 10px; background-color: green;"></div>
<i>New COVID cases in critical care</i>	
COVID-19 cases	<div style="width: 100%; height: 10px; background-color: green;"></div>
<i>Number of new cases</i>	

### Definitions

**Lead measures:**

**1. Face mask wearing:** HealthIQ Reports on observation of mask wearing –

- >95% report public wearing masks
- <80% report public wearing masks

**2. Physical distancing:** HealthIQ Reports on observation of 3 – 6ft physical distancing -

- >95% report public maintaining distance
- <80% report public maintaining distance

**3. Adoption of Technology:** Number of people participating in HealthIQ or Apps (public) -

- >10,000 unique respondents (All time)
- <5,000 unique respondents

**4. Testing capacity:** In stock of all lab consumables, reagents and kits plus enabling resources: staff & PPE

- >3 months' supply
- <1 months' supply

**5. PPE supplies (critical):** In stock of: surgical mask, N95 mask, gloves, gowns and face shields

- >5 months' supply
- >3 months' supply

**Lag measures:**

**6. Classification: WHO Country classification**

- Green: Sporadic cases
- Amber: Local transmission
- Red: Community transmission

**7. Transmission:** Proportion of cases able to be linked to known cases or clusters

- <10% unknown transmission
- >20% unknown transmission

**8. Reproduction rate:** Real time reproduction number average over last 7 days

- Rt <1.0
- Rt >1.4

**9. Hospitalizations:** New COVID-related hospitalizations

- <7 over last 7 days
- >21 over last 7 days

**10. Critical care:** COVID-related ICU cases

- <4 concurrent per week
- >7 concurrent per week

**11. COVID-19 cases:** Number of new cases per week

- <12 over last 7 days
- >35 over last 7 days

# Coronavirus (COVID-19) Modelling Data - 24 April

The numbers generated through this model cannot be interpreted as predictions of what will occur during the current COVID-19 pandemic. Rather, they should be treated as estimates of what might happen, based on the assumptions used in generating these estimates and the modelling strategy used. The model aims to provide decision makers with potentially useful but heavily caveated information that will be refined as more information becomes available. The point of the model is not to predict the future, it's to influence it, help us prepare for it and choose a good course of action.

Our analyses on COVID-19 infections, hospitalizations, and testing can be found at the links below:

Parameter	HealthIQ Estimate	Model Estimate
Reproduction Rate	0.80	0.80
Reproduction Rate	0.75	0.75
Reproduction Rate	0.70	0.70
Reproduction Rate	0.65	0.65
Reproduction Rate	0.60	0.60
Reproduction Rate	0.55	0.55
Reproduction Rate	0.50	0.50
Reproduction Rate	0.45	0.45
Reproduction Rate	0.40	0.40
Reproduction Rate	0.35	0.35
Reproduction Rate	0.30	0.30
Reproduction Rate	0.25	0.25
Reproduction Rate	0.20	0.20
Reproduction Rate	0.15	0.15
Reproduction Rate	0.10	0.10
Reproduction Rate	0.05	0.05
Reproduction Rate	0.00	0.00

**COVID-19 (Coronavirus)**

**Bermuda Modelling: Infections per day**

**Table: Total Infections (including unconfirmed infections)**

Date	Peak	Peak Date
1st April	17 cases (80%)	15th April
15th April	80 cases (100%)	20th April
20th April	35 cases (44%)	-

GOVERNMENT OF BERMUDA  
Ministry of Health

## COVID-19 Health Screening

Welcome to the Health Department's COVID-19 health screening registration form for the Bermuda Government Molecular Diagnostic Testing Laboratory at the old White's Supermarket at Southside. Please choose and register for a timeslot that suits you for your screening. Please ensure to bring your confirmation number with you for your screening. Instructions: Please remain in your car or on your bike, with a mask on and your windows up until directed. Your results will be communicated to you by your doctor.

[Check Availability](#)

[Printer-friendly version](#)

## Contact Information

---

Ministry of [Health](#)

Department of [Health Headquarters](#)

### Physical Address

Continental Building  
25 Church Street  
Hamilton HM 12  
Bermuda

(441) 278-4900

[Send us an email](#)

### Mailing Address

P.O. Box HM 380  
Hamilton HM BX  
Bermuda

## You might be interested in

---

[Guidelines for radioactive equipment](#)

[Health programmes in Bermuda](#)

[The Zika Virus](#)



## Strategy for Sustainable Water and Wastewater Servicing in St. George's Parish

### The Study

The Government of Bermuda, Ministry of Public Works, has initiated a study to formulate a strategy for sustainable water and wastewater servicing in St. George's Parish. The objectives of the project involve an information review of the current water supply and sewage systems in St. George's Parish, to establish appropriate policies in order to:

- Offer options for management of service delivery;
- Identify infrastructure investment required to deliver a sustainable service for the Plan Period ( 25 years); and
- Complete a financial analysis of the current and proposed service delivery systems.

### The Process

The study will define existing constraints and capacities, consider and evaluate alternatives and identify preferred water and wastewater servicing alternatives. The methodology will follow a process similar to the master planning process of the Municipal Engineers Association of Ontario, Canada.

### Public Information and Consultation

The government wishes to ensure that anyone with an interest in this study has an opportunity to be involved and to provide input. Opportunities to provide the public with information will be made available via Public Information Centers (PIC's) and Town Hall meetings as well as on the project website, found here: [www.bermudawater.info](http://www.bermudawater.info). The government is urging St. George's businesses and residents to answer the short survey found at the listed site.

If you have any suggestions for or comments on the study please send any email to the project website: [stgeorgewwwplan@gov.bm](mailto:stgeorgewwwplan@gov.bm).



For general enquiries, [contact us](#)  
T. (441) 295-5151