



[← Coronavirus \(COVID-19\)](#)

# Coronavirus (COVID-19) current situation and case numbers

We are managing the COVID-19 outbreak in Australia as a health emergency. We will update this page every day with the current situation, latest case numbers and related information.

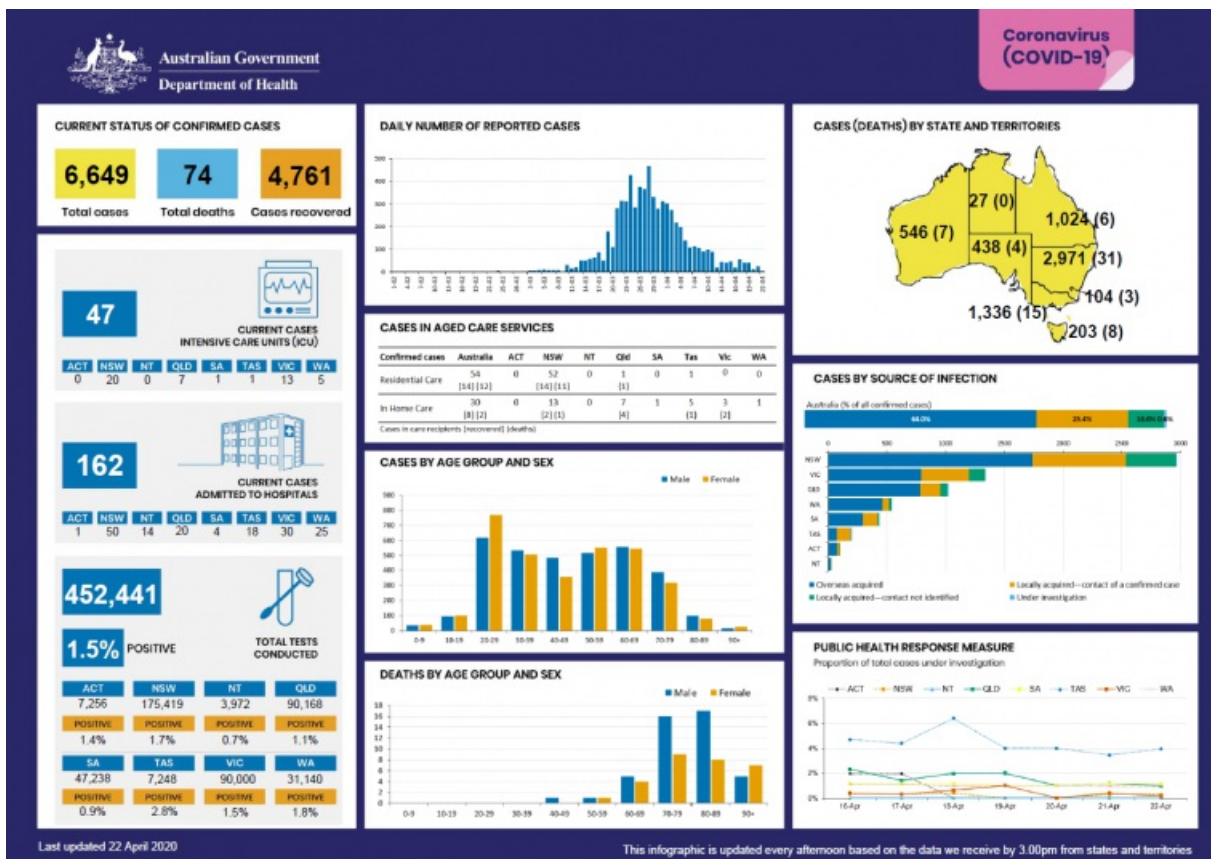
[Listen](#) [Print](#) [Share](#)

## On this page

## Current status

The World Health Organization (WHO) has announced that COVID-19 is a pandemic.

Currently, Australia does not have widespread community transmission of COVID-19. Find out [how we are managing the outbreak](#) to slow the spread.



[View text description and larger image of 'Coronavirus \(COVID-19\) at a glance' graphic](#)

# In Australia

As at 3:00pm on 22 April 2020, there have been 6,649 confirmed cases of COVID-19 in Australia. There have been 4 new cases since 3:00pm yesterday.

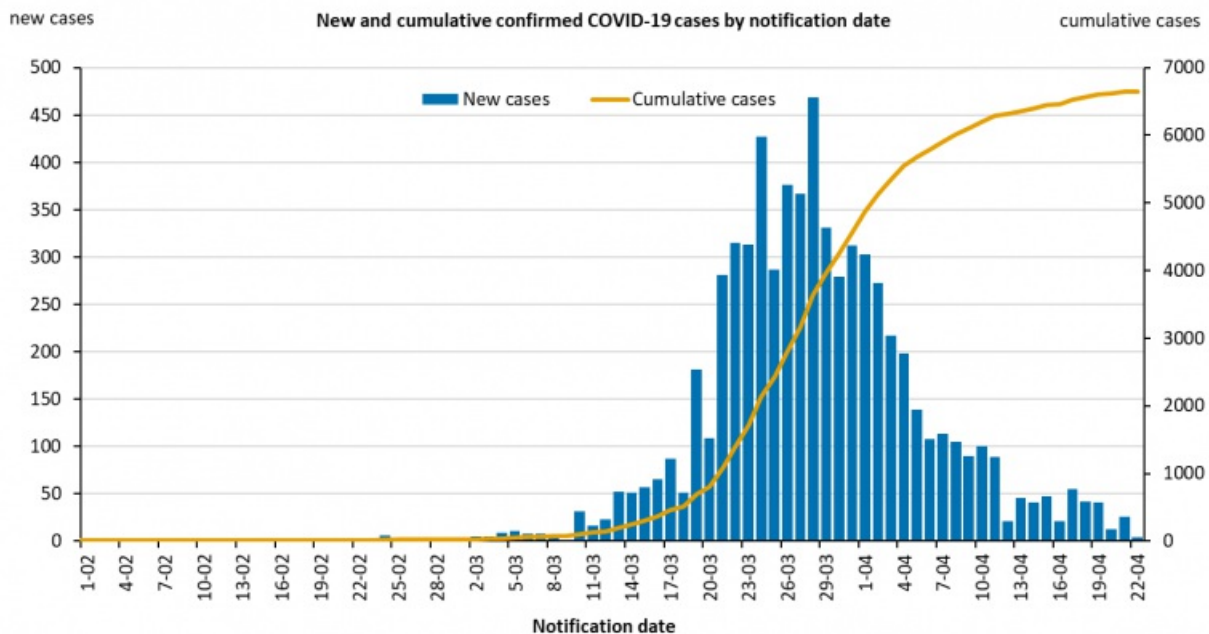
Of the 6,649 confirmed cases in Australia, 74 have died and 4,761 have been reported as recovered from COVID-19. More than 452,000 tests have been conducted across Australia.

Location	Confirmed cases*
Australian Capital Territory	104
New South Wales	2,971
Northern Territory	27
Queensland	1,024
South Australia	438
Tasmania	203
Victoria	1,336
Western Australia	546
<b>Total</b>	<b>6,649</b>

\* Note that under National Notifiable Diseases Surveillance System reporting requirements, cases are reported based on their Australian jurisdiction of residence rather than where they were detected. For example, a case reported previously in the NT in a NSW resident is counted in the national figures as a NSW case.

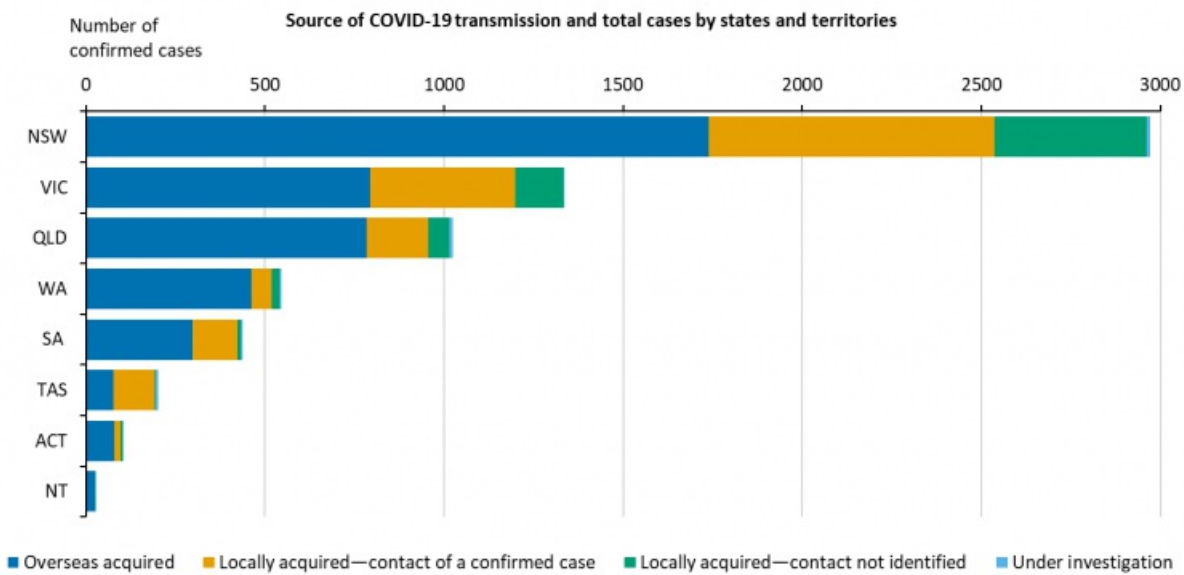
## Daily overview of cases

Data used in the daily overview are updated every afternoon based on the data we receive by 3.00pm from states and territories.



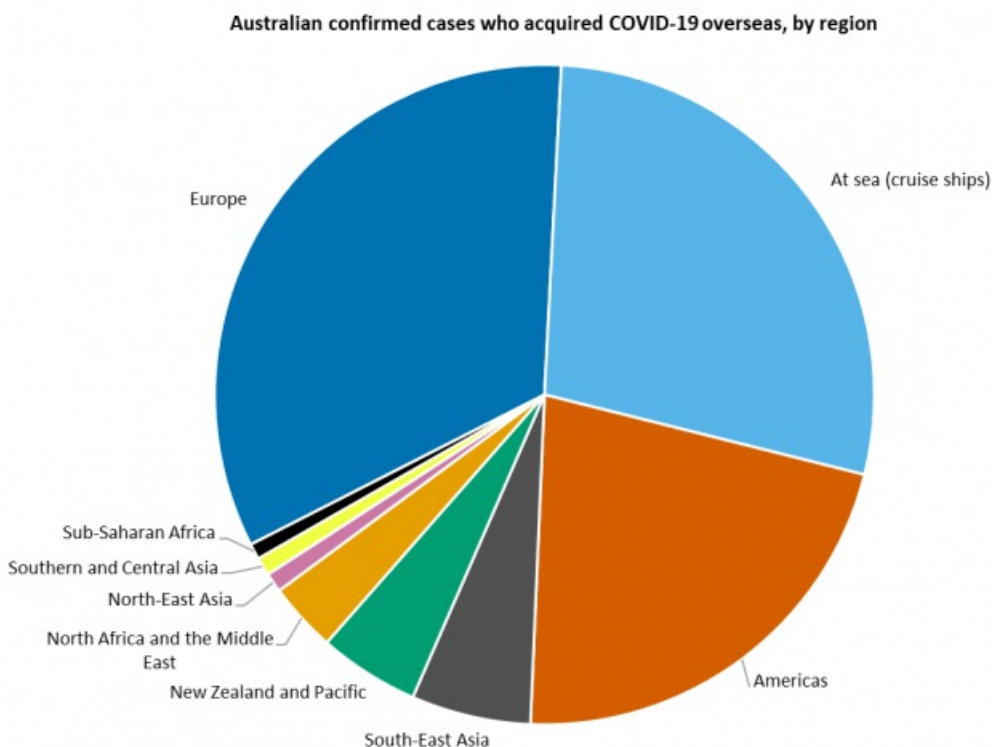
[View text description and larger image of 'New and cumulative COVID-19 cases in Australia by notification date' graphic.](#)

To date, the majority of confirmed cases in all states were acquired overseas.



[View text description and larger image of 'COVID-19 cases in Australia by state and source of transmission' graphic.](#)

The majority of Australian confirmed cases acquired their infection overseas, including on board cruise ships or associated with recent travel to Europe or the Americas.

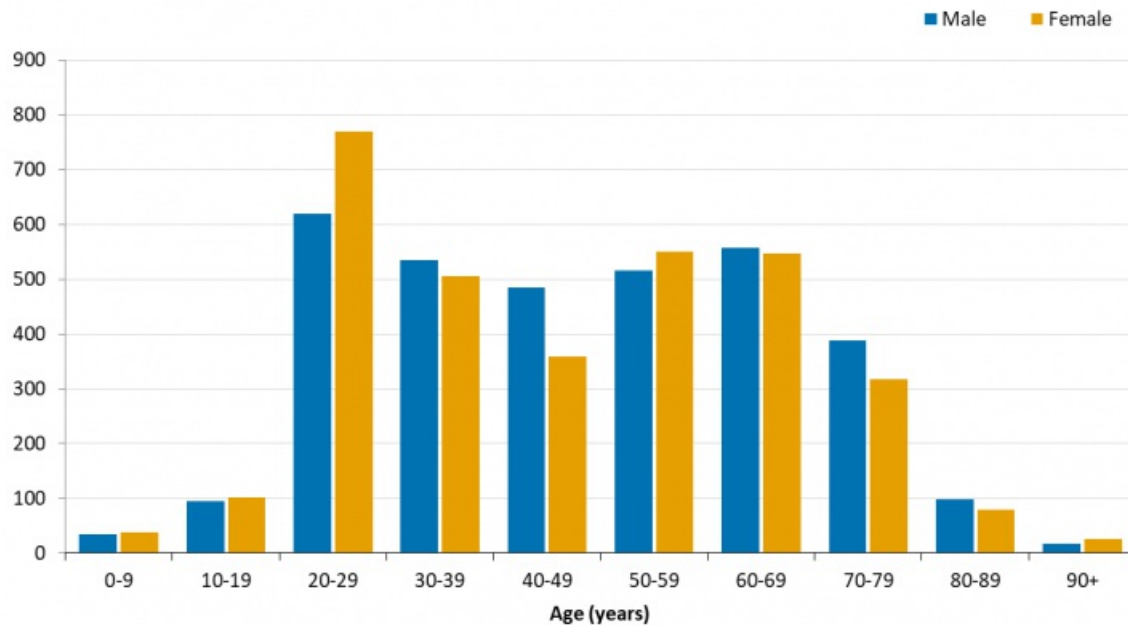


[View text description and larger image of 'COVID-19 cases acquired overseas – by region or country acquired' graphic.](#)

Confirmed cases are seen across all age groups.

Number of confirmed cases

Total confirmed COVID-19 cases by sex and age group



[View text description and larger image of 'COVID-19 cases in Australia by gender and age' graphic.](#)

Further information regarding the epidemiology of cases in Australia is provided in the [weekly epidemiology reports](#).

## Tracing contact with confirmed cases from flights

States and territories are publishing details of flights where we now know that confirmed cases were on board.

You can check these lists to see whether you may have been in contact with a confirmed case.

See our [advice for travellers](#) page for more details.

## Across the world

Across the world there have been more than **2.5 million confirmed cases** of COVID-19 and more than **177,000 deaths**.

Find out how COVID-19 is affecting other countries on the [World Health Organization \(WHO\) website](#). View the:

- [WHO daily situation reports](#)
- [WHO COVID-19 dashboard](#)

If you're planning to go overseas, keep up to date with the latest [advice for travellers](#).

## How we are managing the outbreak

The Prime Minister has activated the [Emergency Response Plan for Novel Coronavirus \(COVID-19\)](#).

To find out how the Australian Government is managing COVID-19, go to [Government response to the outbreak](#).

---

**Last updated:**

22 April 2020

**Tags:**

[Communicable diseases](#)

[Emergency health management](#)

[Travel health](#)

## More about this alert

### Coronavirus (COVID-19)

---

News and media

#### Current situation and case numbers

What you need to know

How to protect yourself and others

Advice for people at risk

Advice for travellers

Advice for the health and aged care sector

Government response

Resources

Translated resources

[Is there anything wrong with this page?](#)

## About Health

[About us](#)

[Ministers](#)

[Careers](#)

[Corporate reporting](#)

[Portfolio agencies](#)

[Contact us](#)

## Using our websites

[About our website](#)

[Accessibility](#)

[Copyright](#)

[Disclaimer](#)

[Privacy](#)

[Social media](#)

[Subscriptions](#)

## Follow us

[Media centre](#)

[News](#)

[Facebook](#)

[LinkedIn](#)

[Twitter](#)

[Youtube](#)

## Help us improve

We are always looking for ways to improve our website.

[Provide feedback](#)