



Search this website



Home

Health topics

Initiatives and programs

Resources

[← Coronavirus \(COVID-19\)](#)

## Coronavirus (COVID-19) current situation and case numbers

We are managing the COVID-19 outbreak in Australia as a health emergency. We will update this page every day by 9pm AEST with the current situation, latest case numbers and related information.

[Listen](#) [Print](#) [Share](#)

### On this page

## At a glance

Our data is collated and updated every day by 9pm AEST and reflects the previous 24 hours.

COVID-19 was first confirmed in Australia in late January 2020. This page provides a number of visual representations of information about COVID-19 in Australia since that time.

This 'at a glance' infographic includes all of the COVID-19 numbers, charts and tables on this page.



CURRENT STATUS OF CONFIRMED CASES

**6,849** Total cases  
**96** Total deaths  
**5,889** Cases recovered

**27**

CURRENT CASES  
INTENSIVE CARE UNITS (ICU)

ACT NSW NT QLD SA TAS VIC WA  
0 13 0 4 0 1 6 3

**66**

CURRENT CASES  
ADMITTED TO HOSPITALS

ACT NSW NT QLD SA TAS VIC WA  
0 25 3 9 2 8 12 7

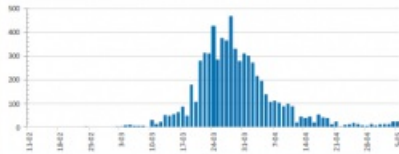
**664,756**

**1.0%** POSITIVE

TOTAL TESTS  
CONDUCTED

ACT	NSW	NT	QLD
9,829	253,995	4,925	117,721
POSITIVE	POSITIVE	POSITIVE	POSITIVE
1.1%	1.2%	0.6%	0.9%
SA	TAS	VIC	WA
62,139	16,017	151,977	48,153
POSITIVE	POSITIVE	POSITIVE	POSITIVE
0.7%	1.4%	0.9%	1.1%

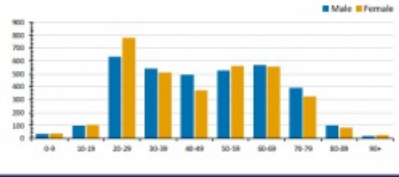
DAILY NUMBER OF REPORTED CASES



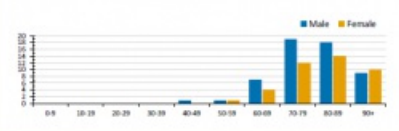
CASES IN AGED CARE SERVICES

Confirmed Cases	Australia	ACT	NSW	NT	QLD	SA	Tas	Vic	WA
Residential Care Residents	63	0	61	0	1	0	1	0	0
In-Home Care Recipients	31	0	14	0	7	1	5	3	1
Cases in care recipients (recovered) (deaths)	[16] (4)		[3] (1)		[6]	[1]	[2]	[1]	[1]

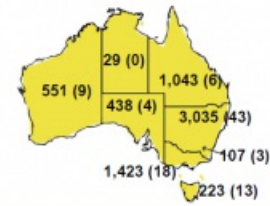
CASES BY AGE GROUP AND SEX



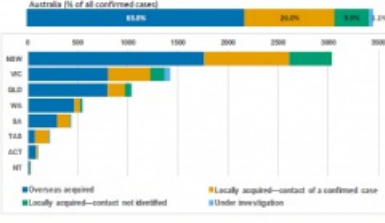
DEATHS BY AGE GROUP AND SEX



CASES (DEATHS) BY STATE AND TERRITORIES



CASES BY SOURCE OF INFECTION



PUBLIC HEALTH RESPONSE MEASURE



Last updated 5 May 2020

This infographic is updated every afternoon based on the data we receive by 3.00pm from states and territories

[View text description and larger image of 'Coronavirus \(COVID-19\) at a glance' graphic.](#)

## Total cases, recoveries and deaths

The total number of confirmed COVID-19 cases, recovered cases and deaths recorded in Australia since 22 January 2020.

## Total cases and deaths by state and territory

### Total COVID-19 cases and deaths by states and territories

This table shows the total number of confirmed COVID-19 cases and deaths reported in each state and territory since 22 January 2020. State and territory totals reflect where the person normally lives, not where they were tested.

[More information](#)

### Daily reported cases

There have been **25\*** newly confirmed cases since 3:00pm yesterday.

\*NSW have revised their number of cases since yesterday's update. Whilst there was an increase in the last 24 hours of 3 cases in NSW, there was one previously reported case that has subsequently been excluded after further testing. This has resulted in a cumulative increase of 2 cases as part of the NSW figures, and has affected the calculated difference from the previously reported national 'total' figure of 6,825.

### Daily number of reported COVID-19 cases in Australia

This graph shows the total number of new confirmed COVID-19 cases reported each day by states and territories. These figures are collated and updated by 9pm AEST and reflect the previous 24 hours.

[More information](#)

## **Cumulative confirmed COVID-19 cases by notification date**

This graph shows the cumulative number of confirmed COVID-19 cases reported each day by states and territories. These figures are collated and updated by 9pm AEST and reflect the previous 24 hours.

[More information](#)

## **Cases by source of infection**

### **Australian COVID-19 cases by source of infection**

This table shows the sources of infection as a percentage of total confirmed COVID-19 cases in Australia since 22 January 2020.

[More information](#)

## **COVID-19 cases by source of infection by state and territory**

For the total number of confirmed COVID-19 cases in each state and territory since 22 January 2020, this graph shows the number by each source of infection.

[More information](#)

## **Cases and deaths by age and sex**

### **COVID-19 cases by age group and sex**

This graph shows the number of confirmed COVID-19 cases for males and females by age group since 22 January 2020.

[More information](#)

## **COVID-19 deaths by age group and sex**

This graph shows the number of COVID-19 deaths for males and females by age group since 22 January 2020.

[More information](#)

## **Tests conducted and results**

### **Total COVID-19 tests conducted and results**

This table shows the total number of COVID-19 tests conducted and the percentage that returned a positive result, in Australia and in each state and territory, since 22 January 2020.

[More information](#)

## **Cases admitted to hospitals**

### **Current COVID-19 cases in hospitals and Intensive Care Units (ICUs)**

This graph shows the number of COVID-19 cases currently admitted to hospital, including cases in ICUs, in Australia and each state and territory.

[More information](#)

## **Cases in aged care services**

### **COVID-19 cases in aged care services – residential care**

This graph shows the number of confirmed active COVID-19 cases, deaths and recovered cases, in Australia and each state and territory, for people living in Australian Government subsidised residential aged care facilities.

[More information](#)

## COVID-19 cases in aged care services – in-home care

This graph shows the number of confirmed active COVID-19 cases, deaths and recovered cases, in Australia and each state and territory, for people receiving Australian Government subsidised care in their own home.

[More information](#)

## How Australia compares with the world

Learn more about the international situation from the World Health Organisation:

- [WHO daily situation reports](#)
- [WHO COVID-19 dashboard](#)

---

### Last updated:

5 May  
2020

### Tags:

[Communicable  
diseases](#)

[Emergency health  
management](#)

[Travel health](#)

## More about this alert

**Coronavirus (COVID-19)**

---

News and media



## Current situation and case numbers

[What you need to know](#)

[How to protect yourself and others](#)

[Advice for people at risk](#)

[Advice for travellers](#)

[Advice for the health and aged care sector](#)

[Government response](#)

[Resources](#)

[Translated resources](#)

[Is there anything wrong with this page?](#)

## About Health

[About us](#)

[Ministers](#)

[Careers](#)

[Corporate reporting](#)

[Portfolio agencies](#)

[Contact us](#)

## Using our websites

[About our website](#)

[Accessibility](#)

[Copyright](#)

[Disclaimer](#)

[Privacy](#)

[Social media](#)

[Subscriptions](#)

## Follow us

[Media centre](#)

[News](#)

[Facebook](#)

[LinkedIn](#)

[Twitter](#)

[Youtube](#)

## Help us improve

We are always looking for ways to improve our website.

[Provide feedback](#)