



Search this website



[Home](#)

[Health topics](#)

[Initiatives and programs](#)

[Resources](#)

[← Coronavirus \(COVID-19\)](#)

## Coronavirus (COVID-19) current situation and case numbers

We are managing the COVID-19 outbreak in Australia as a health emergency. We will update this page every day by 9pm AEST with the current situation, latest case numbers and related information.

 [Listen](#)  [Print](#)  [Share](#)

### On this page

## At a glance

Our data is collated and updated every day by 9pm AEST and reflects the previous 24 hours.

COVID-19 was first confirmed in Australia in late January 2020. This page provides a number of visual representations of information about COVID-19 in Australia since that time.

This 'at a glance' infographic includes all of the COVID-19 numbers, charts and tables on this page.



CURRENT STATUS OF CONFIRMED CASES

**6,975** **98** **6,271**  
Total cases Total deaths Cases recovered

**17**

CURRENT CASES  
INTENSIVE CARE UNITS (ICU)

ACT NSW NT QLD SA TAS VIC WA

0 7 0 3 0 0 6 1

**50**

CURRENT CASES  
ADMITTED TO HOSPITALS

ACT NSW NT QLD SA TAS VIC WA

0 22 2 7 1 8 9 1

**909,025**

**0.8%** POSITIVE

TOTAL TESTS  
CONDUCTED

ACT NSW NT QLD

12,637 323,887 5,759 142,040

POSITIVE POSITIVE POSITIVE POSITIVE

0.6% 0.5% 0.5% 0.7%

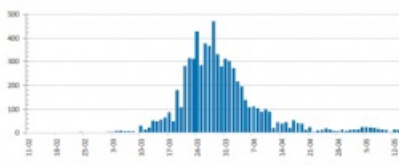
SA TAS VIC WA

72,725 20,088 273,256 58,634

POSITIVE POSITIVE POSITIVE POSITIVE

0.6% 1.1% 0.6% 0.9%

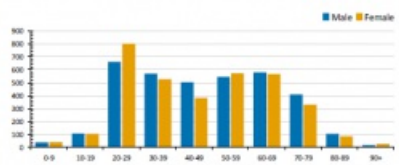
DAILY NUMBER OF REPORTED CASES



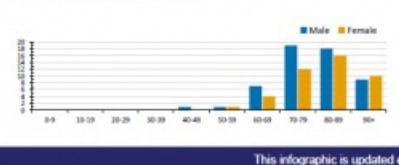
CASES IN AGED CARE SERVICES

Category	Australia	ACT	NSW	NT	QLD	SA	Tas	Vic	WA
Cases	63	0	61	0	1	0	1	0	0
Residential Care Recipients	[16] (26)		[16] (24)						
In Home Care Recipients	31	0	13	0	0	0	1	0	1
Cases in care recipients (recovered) (deaths)	[25] (3)		[13]				[1] (2)		[1]

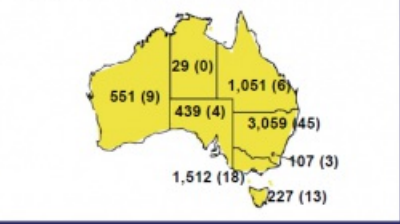
CASES BY AGE GROUP AND SEX



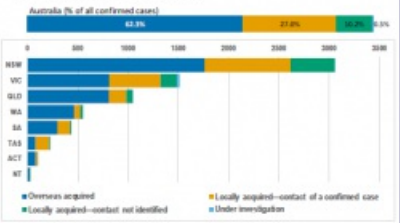
DEATHS BY AGE GROUP AND SEX



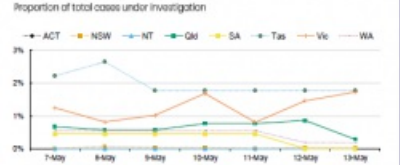
CASES (DEATHS) BY STATE AND TERRITORIES



CASES BY SOURCE OF INFECTION



PUBLIC HEALTH RESPONSE MEASURE



Last updated 13 May 2020

This infographic is updated every afternoon based on the data we receive by 3.00pm from states and territories

[View text description and larger image of 'Coronavirus \(COVID-19\) at a glance' graphic.](#)

## Total cases, recoveries and deaths

The total number of confirmed COVID-19 cases, recovered cases and deaths recorded in Australia since 22 January 2020.

**Note:** States and territories provide these figures daily. Due to the dynamic nature of case data, state and territory health departments may revise their daily numbers. Where previously reported cases are excluded after further investigation this may result in a reduction of total case numbers.

## Total cases and deaths by state and territory

### Total COVID-19 cases and deaths by states and territories

This table shows the total number of confirmed COVID-19 cases and deaths reported in each state and territory since 22 January 2020. State and territory totals reflect where the person normally lives, not where they were tested.

[More information](#)

### Daily reported cases

There have been **13** newly confirmed cases since 3:00pm yesterday.

### Daily number of reported COVID-19 cases in Australia

This graph shows the total number of new confirmed COVID-19 cases reported each day by states and territories. These figures are collated and updated by 9pm AEST and reflect the previous 24 hours.

[More information](#)

## **Cumulative confirmed COVID-19 cases by notification date**

This graph shows the cumulative number of confirmed COVID-19 cases reported each day by states and territories. These figures are collated and updated by 9pm AEST and reflect the previous 24 hours.

[More information](#)

## **Cases by source of infection**

### **Australian COVID-19 cases by source of infection**

This table shows the sources of infection as a percentage of total confirmed COVID-19 cases in Australia since 22 January 2020.

[More information](#)

## **COVID-19 cases by source of infection by state and territory**

For the total number of confirmed COVID-19 cases in each state and territory since 22 January 2020, this graph shows the number by each source of infection.

[More information](#)

## **Cases and deaths by age and sex**

### **COVID-19 cases by age group and sex**

This graph shows the number of confirmed COVID-19 cases for males and females by age group since 22 January 2020.

[More information](#)

## **COVID-19 deaths by age group and sex**

This graph shows the number of COVID-19 deaths for males and females by age group since 22 January 2020.

[More information](#)

## **Tests conducted and results**

### **Total COVID-19 tests conducted and results**

This table shows the total number of COVID-19 tests conducted and the percentage that returned a positive result, in Australia and in each state and territory, since 22 January 2020.

[More information](#)

## Cases admitted to hospitals

### Current COVID-19 cases in hospitals and Intensive Care Units (ICUs)

This graph shows the number of COVID-19 cases currently admitted to hospital, including cases in ICUs, in Australia and each state and territory.

[More information](#)

## Cases in aged care services

### COVID-19 cases in aged care services – residential care

This graph shows the number of confirmed active COVID-19 cases, deaths and recovered cases, in Australia and each state and territory, for people living in Australian Government subsidised residential aged care facilities.

[More information](#)

## COVID-19 cases in aged care services – in-home care

This graph shows the number of confirmed active COVID-19 cases, deaths and recovered cases, in Australia and each state and territory, for people receiving Australian Government subsidised care in their own home.

[More information](#)

## How Australia compares with the world

Learn more about the international situation from the World Health Organisation (WHO). Read their [daily situation reports](#) and check the [WHO COVID-19 dashboard](#).

---

### Last updated:

13 May  
2020

### Tags:

[Communicable diseases](#)

[Emergency health management](#)

[Travel health](#)

## More about this alert

### Coronavirus (COVID-19)

---

News and media

**Current situation and case numbers**

What you need to know

---



[How to protect yourself and others](#)

---

[Advice for people at risk](#)

---

[Easing restrictions](#)

---

[Advice for travellers](#)

---

[Ongoing support](#)

---

[Advice for the health and aged care sector](#)

---

[Government response](#)

---

[Resources](#)

---

[Translated resources](#)

[Is there anything wrong with this page?](#)

## About Health

[About us](#)

[Ministers](#)

[Careers](#)

[Corporate reporting](#)

[Portfolio agencies](#)

[Contact us](#)

## Using our websites

[About our website](#)

[Accessibility](#)

[Copyright](#)

[Disclaimer](#)

[Privacy](#)

[Social media](#)

[Subscriptions](#)

## Follow us

[Media centre](#)

[News](#)

[Facebook](#)

[LinkedIn](#)

[Twitter](#)

[Youtube](#)

[Instagram](#)

## Help us improve

We are always looking for ways to improve our website.

[Provide feedback](#)