



Search this website



Home

Health topics

Initiatives and programs

Resources

[← Coronavirus \(COVID-19\)](#)

Coronavirus (COVID-19) current situation and case numbers

We are managing the COVID-19 outbreak in Australia as a health emergency. We will update this page every day by 9pm AEST with the current situation, latest case numbers and related information.

 [Listen](#)  [Print](#)  [Share](#)

On this page

At a glance

Our data is collated and updated every day by 9pm AEST and reflects the previous 24 hours.

COVID-19 was first confirmed in Australia in late January 2020. This page provides a number of visual representations of information about COVID-19 in Australia since that time.

This 'at a glance' infographic includes all of the COVID-19 numbers, charts and tables on this page.



CURRENT STATUS OF CONFIRMED CASES

7,118 **102** **6,532**
Total cases Total deaths Cases recovered

5 CURRENT CASES
INTENSIVE CARE UNITS (ICU)

ACT	NSW	NT	QLD	SA	TAS	VIC	WA
0	1	0	1	0	0	3	0

31 CURRENT CASES
ADMITTED TO HOSPITALS

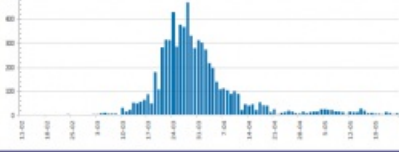
ACT	NSW	NT	QLD	SA	TAS	VIC	WA
0	15	0	4	0	4	8	0

1,244,200 TOTAL TESTS
CONDUCTED

0.6% POSITIVE

ACT	NSW	NT	QLD
16,006	422,703	7,233	174,974
POSITIVE	POSITIVE	POSITIVE	POSITIVE
0.7%	0.7%	0.4%	0.6%
SA	TAS	VIC	WA
89,245	24,660	431,878	77,501
POSITIVE	POSITIVE	POSITIVE	POSITIVE
0.5%	0.9%	0.4%	0.7%

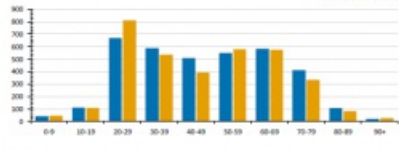
DAILY NUMBER OF REPORTED CASES



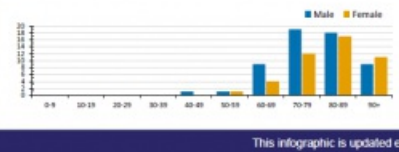
CASES IN AGED CARE SERVICES

Confirmed Cases	Australia	ACT	NSW	NT	QLD	SA	Tas	Vic	WA
Residential Care Residents	87 (27)	0	51 (25)	0	1	0	1	4	0
In Home Care Residents	31 (27)	0	13 (13)	0	0	1	5	3	1
Cases in care recipients (recovered) (deaths)									

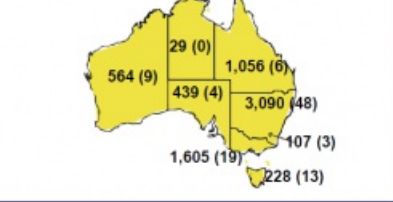
CASES BY AGE GROUP AND SEX



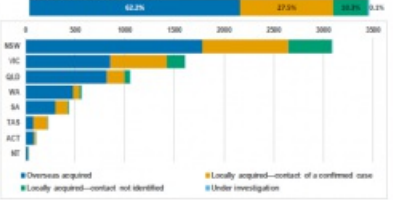
DEATHS BY AGE GROUP AND SEX



CASES (DEATHS) BY STATE AND TERRITORIES



CASES BY SOURCE OF INFECTION



PUBLIC HEALTH RESPONSE MEASURE



Last updated 25 May 2020

This infographic is updated every afternoon based on the data we receive by 3.00pm from states and territories

[View text description and larger image of 'Coronavirus \(COVID-19\) at a glance' graphic.](#)

Total cases, recoveries, deaths, and new cases in the last 24 hours

The total number of confirmed COVID-19 cases, recovered cases, deaths, and new cases in the last 24 hours, recorded in Australia since 22 January 2020.

Note: States and territories provide these figures daily. Due to the dynamic nature of case data, state and territory health departments may revise their daily numbers. Where previously reported cases are excluded after further investigation this may result in a reduction of total case numbers.

Total cases and deaths by state and territory

Total COVID-19 cases and deaths by states and territories

This table shows the total number of confirmed COVID-19 cases and deaths reported in each state and territory since 22 January 2020. State and territory totals reflect where the person normally lives, not where they were tested.

[Expand description](#)



The number of confirmed cases and deaths reported in each state and territory since 22 January 2020. These figures are based on the person's state of residence, not where they were tested for COVID-19 or where they were infected. The majority of confirmed cases and deaths are from NSW.

Daily reported cases

Daily number of reported COVID-19 cases in Australia

This graph shows the total number of new confirmed COVID-19 cases reported each day by states and territories. These figures are collated and updated by 9pm AEST and reflect the previous 24 hours.

[Expand description](#)



This bar chart shows the new confirmed COVID-19 cases by notification received date. The bottom axis shows the notification date. The vertical axis shows the number of new COVID-19 cases, represented by the bars. The first cases of COVID-19 were identified in late January in Australia. The number of new cases rapidly increased through March. Since April there has been a reduction in daily reported cases.

Cumulative confirmed COVID-19 cases by notification date

This graph shows the cumulative number of confirmed COVID-19 cases reported each day by states and territories. These figures are collated and updated by 9pm AEST and reflect the previous 24 hours.

[Expand description](#)



This chart shows the cumulative number of new confirmed COVID-19 cases by notification received date. The bottom axis shows the notification date. The vertical axis shows the cumulative total number of COVID-19 cases. The first cases of COVID-19 were identified in late January in Australia. The number of new cases rapidly increased through March, then in

April there has been a reduction in daily reported cases.

Cases by source of infection

Australian COVID-19 cases by source of infection

This table shows the sources of infection as a percentage of total confirmed COVID-19 cases in Australia since 22 January 2020.

[Expand description](#)



For the total number of confirmed cases in Australia, this table shows the source of infection as a percentage. The source of infection for confirmed cases of COVID-19 can be described as:

- Overseas acquired — the person was infected while overseas (including at sea)
- Locally acquired — contact with a confirmed case — the person was infected in Australia through contact with someone confirmed to have COVID-19
- Locally acquired — contact not identified — the person was infected in Australia, but the source of infection is not known
- Under investigation — the source of infection has not yet been determined

The majority of all confirmed cases were acquired overseas. Of cases with a reported place of acquisition, more than half have recent international travel history, including around 1,200 cases associated with cruise ships. The number of cases currently under investigation should ideally be as low as possible. Knowing the source of infection assists in stopping the spread of COVID-19.

COVID-19 cases by source of infection by state and territory

For the total number of confirmed COVID-19 cases in each state and territory since 22 January 2020, this graph shows the number by each source of infection.

[Expand description](#)



This horizontal bar chart shows the source of COVID-19 infection and the total number of cases by state and territory. The top axis shows the number of confirmed COVID-19 cases. The vertical axis shows each state and territory: ACT, NSW, NT, QLD, SA, TAS, VIC and WA. Each bar represents the number of cases by state that were acquired overseas, acquired through contact with a confirmed case in Australia, acquired in Australia with no link to another case indicating possible community transmission, and cases still being investigated. The source of infection for confirmed cases of COVID-19 can be described as:

- Overseas acquired — the person was infected while overseas (including at sea)
- Locally acquired — contact with a confirmed case — the person was infected in Australia through contact with someone confirmed to have COVID-19
- Locally acquired — contact not identified — the person was infected in Australia, but the source of infection is not known
- Under investigation — the source of infection has not yet been determined

The majority of all confirmed cases were acquired overseas. Of cases with a reported place of acquisition, more than half have recent international travel history, including around 1,200 cases associated with cruise ships. The number of cases currently under investigation should ideally be as low as possible. Knowing the source of infection assists in stopping the spread of COVID-19.

Cases and deaths by age and sex

COVID-19 cases by age group and sex

This graph shows the number of confirmed COVID-19 cases for males and females by age group since 22 January 2020.

[Expand description](#)



This bar chart shows the number of confirmed COVID-19 cases for males and females by age group since 22 January 2020. The bottom axis shows the age breakdown in 10 year intervals from zero years old to greater than 90 years old. The vertical axis shows the number of confirmed COVID-19 cases. The proportion of COVID-19 cases in males and females is roughly equal. The majority of all cases are reported in those aged 20 to 79 years.

COVID-19 deaths by age group and sex

This graph shows the number of COVID-19 deaths for males and females by age group since 22 January 2020.

[Expand description](#)



This bar chart shows the total number of confirmed deaths from COVID-19 in Australia for each age group and sex since 22 January. Deaths have been reported in those aged between 42 and 95 years. The majority of deaths have been reported in males aged between 70 to 89 years. The bottom axis shows the age breakdown in 10 year intervals from zero years old to greater than 90 years old. The vertical axis shows the number of confirmed COVID-19 deaths.

Tests conducted and results

Total COVID-19 tests conducted and results

This table shows the total number of COVID-19 tests conducted and the percentage that returned a positive result, in Australia and in each state and territory, since 22 January 2020.

[Expand description](#)



This graphic shows the total number of tests completed since 22 January 2020. This number is not reflective of the number of people that have been tested, but the total number of tests completed, as individuals can be tested multiple times. The testing positivity rate is also displayed. This figure represents the percent of all tests that have returned a positive result for COVID-19. These figures are also reported for each state and territory. To date, over 450,000 tests have been conducted nationally. Of those tests conducted, less than 2% have been positive.

Cases admitted to hospitals

Current COVID-19 cases in hospitals and Intensive Care Units (ICUs)

This graph shows the number of COVID-19 cases currently admitted to hospital, including cases in ICUs, in Australia and each state and territory.

[Expand description](#)



The number of patients currently receiving care for COVID-19 in hospital, in Australia and each state and territory. These numbers include ICU patients. The majority of cases currently receiving care in hospital are from NSW.

Cases in aged care services

COVID-19 cases in aged care services – residential care

This graph shows the number of confirmed active COVID-19 cases, deaths and recovered cases, in Australia and each state and territory, for people living in Australian Government subsidised residential aged care facilities.

[Expand description](#)



This graph shows the number of confirmed cases, deaths and cases recovered since 22 January in those who receive Australian Government subsidised Residential care in each state and territory. Residential care means people who live in an Australian Government subsidised aged care facility. Total case numbers are reported followed by recovered and deaths. Cases have been reported in Residential care facilities in NSW, QLD and Tasmania. The majority of cases and deaths reported in Residential care in Australia are in NSW.

COVID-19 cases in aged care services – in-home care

This graph shows the number of confirmed active COVID-19 cases, deaths and recovered cases, in Australia and each state and territory, for people receiving Australian Government subsidised care in their own home.

[Expand description](#)



The number of confirmed cases, deaths and cases recovered since 22 January in those who receive Australian Government subsidised in-home care in each state and territory. In-home care means people who receive Australian Government subsidised care in their own home. Total case numbers are reported followed by cases recovered and deaths. Cases have been reported in in-home care services in all jurisdictions except for ACT and NT. The majority of cases reported in In-home care in Australia are in NSW.

How Australia compares with the world

Learn more about the international situation from the World Health Organisation (WHO). Read their [daily situation reports](#) and check the [WHO COVID-19 dashboard](#).

Last updated:

25 May
2020

Tags:

[Communicable diseases](#)

[Emergency health management](#)

[Travel health](#)

More about this alert

Coronavirus (COVID-19)

News and media

Current situation and case numbers

What you need to know

[How to protect yourself and others](#)

[Advice for people at risk](#)

[Restrictions](#)

[Advice for travellers](#)

[Ongoing support](#)

[Advice for the health and aged care sector](#)

[Government response](#)

[Resources](#)

[Translated resources](#)

[Is there anything wrong with this page?](#)

About Health

[About us](#)

[Ministers](#)

[Careers](#)

[Corporate reporting](#)

[Portfolio agencies](#)

[Contact us](#)

Using our websites

[About our website](#)

[Accessibility](#)

[Copyright](#)

[Disclaimer](#)

[Privacy](#)

[Social media](#)

[Subscriptions](#)

Follow us

[Media centre](#)

[News](#)

[Facebook](#)

[LinkedIn](#)

[Twitter](#)

[Youtube](#)

[Instagram](#)

Help us improve

We are always looking for ways to improve our website.

[Provide feedback](#)