



Search...



[PUBLIC](#)

[PROFESSIONALS](#)

[HEALTHY LIVING](#)

[ABOUT](#)

[MEDIA](#)

[PUBLICATIONS](#)

[CAREERS](#)

[MINISTERS](#)

[Home](#) [»](#) [Infectious diseases](#) [Diseases](#)

Latest updates on COVID-19  
(Coronavirus)

[A-Z of infectious diseases](#)

[Fact sheets](#)

[Control guidelines](#)

Latest updates on COVID-19  
(Coronavirus)

## On this page

[Latest statistics](#)

[Latest press conference](#)

[New cases](#)

[Airport screening](#)

[Age and sex breakdown of confirmed cases reported in NSW](#)

[Confirmed cases reported in NSW by date and likely source](#)

[Likely source of infection of confirmed cases reported in NSW](#)

[Local Government Area \(LGA\) of residence for confirmed cases of COVID-19 with unknown source of infection](#)

[More information](#)

## Latest statistics

As of 11am 16 March 2020

Cases	Count
Confirmed cases	171 <sup>1</sup>
Deaths	4 <sup>2</sup>
Cases under investigation	1,282
Cases tested and excluded	25,511

1. 1 confirmed case is a Victorian resident, hospitalised in NSW.
2. 1 confirmed case is a Queensland resident, who passed away in a NSW hospital.

## Latest press conference

### New cases

Since 10pm Sunday 15 March 2020, there have been 5 additional cases, bringing the total to 171.

Of the new cases, 1 was male and 4 were female, median age 37 (range: 20-51).

The most likely source of infection for all 5 new cases is still under investigation.

### Age and sex breakdown of additional cases reported in NSW

Age group	Female	Male	Total
10-19	0	0	0
20-29	1	0	1
30-39	1	1	2
40-49	1	0	1
50-59	1	0	1
60-69	0	0	0

70-79	0	0	0
90-100	0	0	0
<b>Total</b>	<b>4</b>	<b>1</b>	<b>5</b>

## Airport screening

### Total for Sunday, 15 March 2020

- 471 passenger arrivals screened
- 8 transferred to hospital for further evaluation/testing

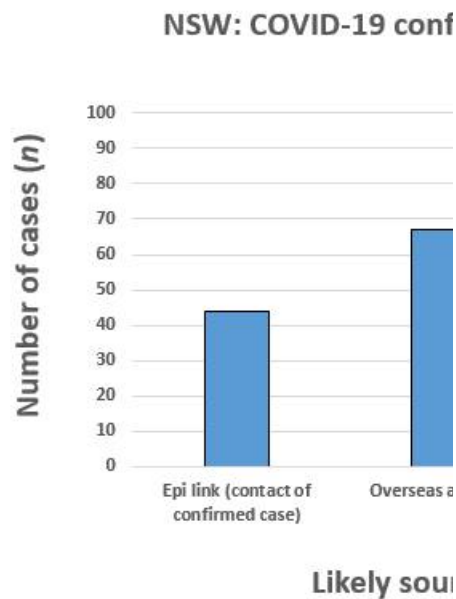
### Cumulative up to Sunday, 15 March 2020

- 27,284 passenger arrivals screened
- 221 transferred to hospital for further evaluation/testing

## Age and sex breakdown of confirmed cases reported in NSW

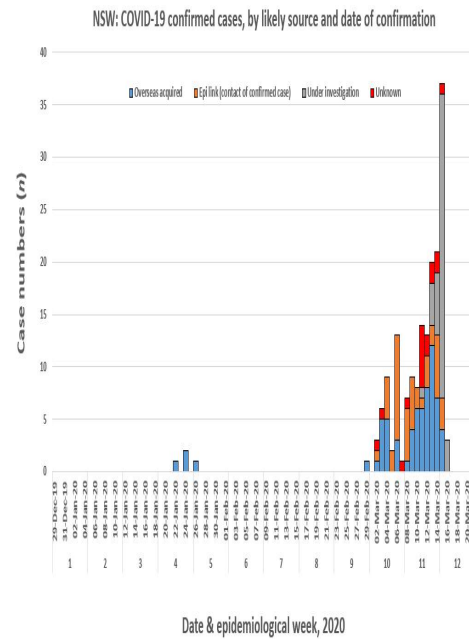
Age group	Female	Percentage female	Male	Percentage male	Total
10-20	5	45	6	55	11
20-30	14	61	9	39	23
30-40	21	50	21	50	42
40-50	16	57	12	43	28
50-60	16	53	14	47	30
60-70	10	40	15	60	25
70-80	2	33	4	67	6
80-90	1	33	2	67	3
90-100	3	100	0	0	3
<b>Total</b>	<b>88</b>	<b>51</b>	<b>83</b>	<b>49</b>	<b>171</b>

## Likely source of infection of confirmed cases reported in NSW



Source	Number of cases
Overseas acquired	67
Epi link (contact of confirmed case)	44
Under investigation	43
Unknown	17
<b>Total</b>	<b>171</b>

## Confirmed cases reported in NSW by date and likely source



## Local Government Area (LGA) of residence for confirmed cases of COVID-19 with unknown source of infection

Local Government Area	Number of cases
Botany Bay	1
Central Coast	1
Georges River	1
Hornsby	2
Ku-ring-gai	1
Liverpool	1
Parramatta	1
Ryde	3
Sydney	2
The Hills Shire	1
Woollahra	3
<b>Total</b>	<b>17</b>




## More information

### NSW Health

- [Press conference - 16 March](#)
- [View all COVID-19 \(Coronavirus\) press conferences](#)
- [View all media releases](#)

- [Heat map of NSW confirmed cases](#)

## Commonwealth

- [Australian Health Protection Principal Committee \(AHPPC\) coronavirus \(COVID-19\) statement - 08 March 2020](#) 
- [Australian Government Department of Health - Coronavirus \(COVID-19\) health alert](#) 
- [Australian Government Department of Health - Coronavirus \(COVID-19\): National Health Plan resources](#) 

Page Updated: Monday 16 March 2020

Contact page owner: [Health Protection NSW](#)

---

NSW  
Government

| Service NSW | Jobs

---

RSS feeds | Accessibility | Privacy | Copyright |  
Disclaimer