



Search...



[PUBLIC](#)

[PROFESSIONALS](#)

[HEALTHY LIVING](#)

[ABOUT](#)

[MEDIA](#)

[PUBLICATIONS](#)

[CAREERS](#)

[MINISTERS](#)

[Home](#) [»](#) [Infectious diseases](#) [Diseases](#)

Latest updates on COVID-19
(Coronavirus)

[A-Z of infectious diseases](#)

[Fact sheets](#)

[Control guidelines](#)

[Latest updates on COVID-19
\(Coronavirus\)](#)

On this page

[Latest statistics](#)

[Latest press conference](#)

[New cases](#)

[Airport screening](#)

[Age and sex breakdown of confirmed cases reported in NSW](#)

[Confirmed cases reported in NSW by date and likely source](#)

[Likely source of infection of confirmed cases reported in NSW](#)

[Local Government Area \(LGA\) of residence for confirmed cases of COVID-19 with unknown source of infection](#)

[More information](#)

Latest statistics

As of 11am 16 March 2020

Cases	Count
Confirmed cases	171 ¹
Deaths	4 ²
Cases under investigation	1,282
Cases tested and excluded	25,511

1. 1 confirmed case is a Victorian resident, hospitalised in NSW.
2. 1 confirmed case is a Queensland resident, who passed away in a NSW hospital.

Latest press conference

New cases

Since 10pm Sunday 15 March 2020, there have been 5 additional cases, bringing the total to 171.

Of the new cases, 1 was male and 4 were female, median age 37 (range: 20-51).

The most likely source of infection for all 5 new cases is still under investigation.

Age and sex breakdown of additional cases reported in NSW

Age group	Female	Male	Total
10-19	0	0	0
20-29	1	0	1
30-39	1	1	2
40-49	1	0	1
50-59	1	0	1
60-69	0	0	0

70-79	0	0	0
90-100	0	0	0
Total	4	1	5

Airport screening

Total for Sunday, 15 March 2020

- 471 passenger arrivals screened
- 8 transferred to hospital for further evaluation/testing

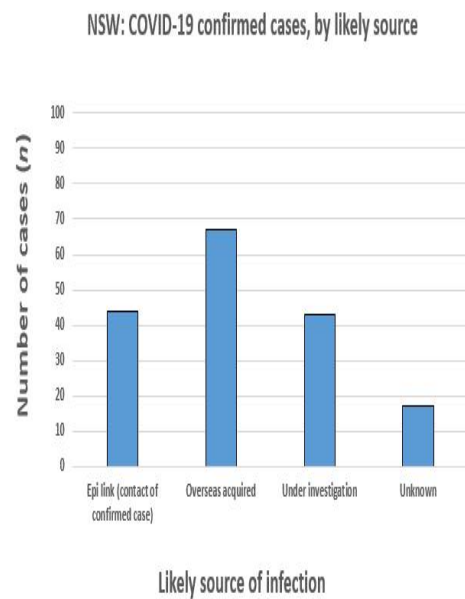
Cumulative up to Sunday, 15 March 2020

- 27,284 passenger arrivals screened
- 221 transferred to hospital for further evaluation/testing

Age and sex breakdown of confirmed cases reported in NSW

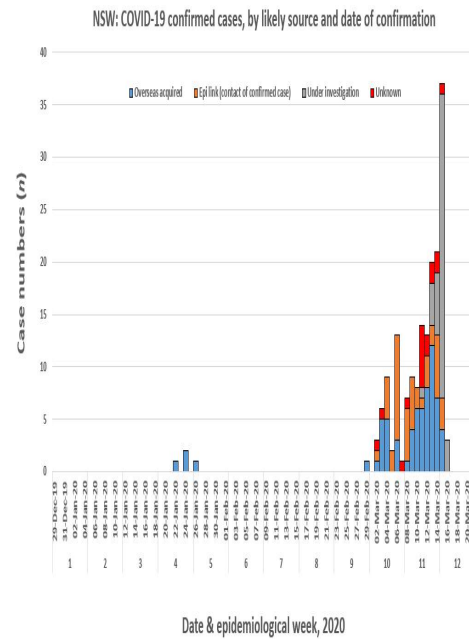
Age group	Female	Percentage female	Male	Percentage male	Total
10-20	5	45	6	55	11
20-30	14	61	9	39	23
30-40	21	50	21	50	42
40-50	16	57	12	43	28
50-60	16	53	14	47	30
60-70	10	40	15	60	25
70-80	2	33	4	67	6
80-90	1	33	2	67	3
90-100	3	100	0	0	3
Total	88	51	83	49	171

Likely source of infection of confirmed cases reported in NSW



Source	Number of cases
Overseas acquired	67
Epi link (contact of confirmed case)	44
Under investigation	43
Unknown	17
Total	171

Confirmed cases reported in NSW by date and likely source



Local Government Area (LGA) of residence for confirmed cases of COVID-19 with unknown source of infection

Local Government Area	Number of cases
Botany Bay	1
Central Coast	1
Georges River	1
Hornsby	2
Ku-ring-gai	1
Liverpool	1
Parramatta	1
Ryde	3
Sydney	2
The Hills Shire	1
Woollahra	3
Total	17




More information

NSW Health

- [Press conference - 16 March](#)
- [View all COVID-19 \(Coronavirus\) press conferences](#)
- [View all media releases](#)

- [Heat map of NSW confirmed cases](#)

Commonwealth

- [Australian Health Protection Principal Committee \(AHPPC\) coronavirus \(COVID-19\) statement - 08 March 2020](#) 
- [Australian Government Department of Health - Coronavirus \(COVID-19\) health alert](#) 
- [Australian Government Department of Health - Coronavirus \(COVID-19\): National Health Plan resources](#) 

Page Updated: Monday 16 March 2020

Contact page owner: [Health Protection NSW](#)

NSW
Government

| [Service NSW](#) | [Jobs](#)

[RSS feeds](#) | [Accessibility](#) | [Privacy](#) | [Copyright](#) | [Disclaimer](#)