



GOVERNMENT OF  
BERMUDA

What are you looking for?



[Coronavirus \(COVID-19\) Facts](#) | [Curfew Exemption Request](#) | [Employment Violations Tip Line](#)

[COVID 19 - Returning Bermuda Residents](#) | [COVID 19 - Unemployment Benefit Application](#)

## Novel Coronavirus (COVID-19)

Bermuda is closely monitoring the global developments of the Coronavirus (COVID-19) through the [World Health Organization \(WHO\)](#) and with our regional public health partners – [Public Health England](#), [Pan-American Health Organization](#) and [Caribbean Public Health Agency](#).

[View all COVID-19 Press Releases](#)

[View all COVID-19 Videos](#)

[View all COVID-19 Resource Material](#)

The current World Health Organization risk assessment for novel coronavirus (COVID-19) is very high risk globally. It is advised that all countries prepare for the possibility of COVID-19 in their communities. Everyone has a role to play in getting ready and staying healthy by practicing everyday prevention measures like frequent

hand washing, staying home when sick and covering coughs and sneezes. The World Health Organization has declared the current coronavirus situation as a pandemic. A pandemic is the increased and sustained transmission of a disease across many countries.

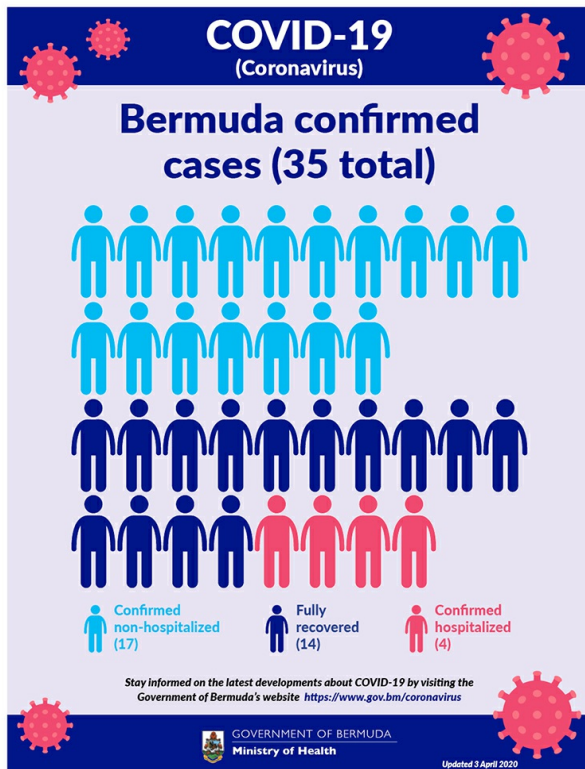
Surveillance for respiratory illness has been enhanced in collaboration with local public health partners. Persons with respiratory illness including fever and cough should call ahead and inform their health care provider of their travel history prior to attending for medical care.

This is a rapidly changing situation. Please regularly check this page for updates.



*Data is as of 3:00pm 3 April 2020*

Port Health Monitoring	Number
Self-quarantine with active monitoring	0
Self-quarantine with public health supervision	946
Self-monitoring with public health supervision	0
COVID-19 Testing	
Total	272
Results pending	33
Results negative	204
Results positive	35
Summary of Confirmed Cases	
Imported	22
Local Transmission	11
Under Investigation	2
Recovered	14



**Imported:** Cases acquired outside of Bermuda.

**Local transmission:** Cases acquired within Bermuda

**Under investigation:** Type of transmission has not yet been determined. These cases are not imported and are likely the result of local transmission.

**Recovered:** Person has had no fever for at least 72 hours (3 days) without the use of fever-reducing medication, other symptoms have improved and at least 14 days have passed since onset of symptoms.

**Country status:** Local transmission. There is currently no evidence of community transmission. Community transmission is evidenced by the inability to relate confirmed cases for a large number of cases.

**Self-quarantine with active monitoring:** Persons with a high-risk travel history or contact are quarantined for 14 days after potential exposure. This quarantine can occur in their home or place of accommodation. Health personnel are in communication with these persons at least once a day to assess for the presence of fever, cough, or difficulty breathing. The mode of communication can be face-to-face, a telephone call, an email or other electronic method.

**Self-quarantine with public health supervision:** All persons entering Bermuda from 17 March 2020 are to self-quarantine with public health supervision. Health personnel are in communication with these persons over the course of the self-quarantine period having provided a plan for self-monitoring for symptoms and clear instructions for notifying a health care provider before the person seeks health care if they develop fever, cough, or difficulty breathing.

**Self-monitoring with public health supervision:** Persons with a relevant travel history or contact that is not considered high-risk are to undergo self-monitoring with public health supervision. Health personnel are in communication with these persons over the course of the self-monitoring period having provided a plan for self-monitoring for symptoms with clear instructions for notifying a health care provider before the person seeks health care if they develop fever, cough, or difficulty breathing. This public health measure is for persons arriving prior to the required self-quarantine of all arriving passengers enacted 17 March 2020.

## COVID-19 Advice for the public

For anyone having questions or concerns about COVID-19, please call the helpline at 444 2498, available 9:00am to 9:00pm daily.

The Government of Bermuda continues discussions with airlines to have one more flight from the US and the UK available for Bermuda residents only. If you are a person who is ordinarily resident in Bermuda and you are seeking to return home, [please complete the form](#)

[Curfew Exemption Request Form](#) - In accordance with the Summary Offences Act 1926, section 14(2) written permission is required for persons who are not listed as exempted persons to be on the highways during the curfew hours as specified in the Summary Offences (Curfew) Order 2020; 8PM – 6AM.

[COVID 19 - Unemployment Benefit Application](#) - Applicable to employees that were full-time (more than 15 hours per week) Persons on Financial Assistance are not eligible for the unemployment benefit.

If you wish to communicate a concern about both employees and employers that may be acting in contradiction to the orders issued under the Employment Act 2000, please complete the following form: [Employment Violations Tip Line](#)

## Information for Travellers

A travel ban is in effect from 20 March 2020.

A travel ban is in place, disallowing travelers to Bermuda unless the person:  
belongs to Bermuda,

- is a resident of Bermuda or a dependent who has permission to reside in Bermuda,
- is a crew member of a cargo or commercial aircraft,
- cargo ship, or
- has written permission of the Quarantine Authority of Bermuda to enter.

Anyone entering Bermuda shall comply with the requirements under the [Quarantine Act 2017](#) and the [Public Health Act 1949](#).

All persons entering Bermuda, residents, visitors, and crew, will be required to self-quarantine for 14 days from arrival. Visitors and crew may depart Bermuda based on their travel itinerary if shorter than 14 days if they remain asymptomatic.

[COVID-19 Screening Form for travellers arriving in Bermuda](#)

## What is COVID-19?

COVID-19 is the infectious disease caused by the most recently discovered coronavirus. Coronaviruses are a large family of viruses which may cause illness in animals or humans. In humans, several coronaviruses are known to cause respiratory infections ranging from the common cold to more severe diseases such as Middle East Respiratory Syndrome (MERS) and Severe Acute Respiratory Syndrome (SARS).

## What are the symptoms of COVID-19?

The most common symptoms of COVID-19 are fever, tiredness, and dry cough. Some persons may have aches and pains, nasal congestion, runny nose, sore throat or diarrhea. These symptoms are usually mild and begin gradually. Some people become infected but don't develop any symptoms and don't feel unwell.

Most people (about 80%) recover from the disease without needing special treatment. Around one out of every six people who gets COVID-19 becomes seriously ill and develops difficulty breathing. Older people, and those with underlying medical problems like high blood pressure, heart problems or diabetes, are more likely to develop serious illness. People with fever, cough and difficulty breathing should seek medical attention and call in advance.

## **How does COVID-19 spread?**

People can catch COVID-19 from others who have the virus.

The disease can spread from person to person through small droplets from the nose or mouth which are spread when a person with COVID-19 coughs or exhales. These droplets land on objects and surfaces around the person. Other people then catch COVID-19 by touching these objects or surfaces, then touching their eyes, nose or mouth. If you think a surface may be infected, clean it with simple disinfectant to kill the virus and protect yourself and others.

People can also catch COVID-19 if they breathe in droplets from a person with COVID-19 who coughs out or exhales droplets. Try to maintain at least one metre (three feet) distance between yourself and anyone who is coughing or sneezing.

The risk of catching COVID-19 from someone with no symptoms at all is very low. COVID-19 is not spread by mosquitos, water, or food.

## **Should I worry about COVID-19?**

Illness due to COVID-19 infection is generally mild, especially for children and young adults. However, it can cause serious illness: about one in every five people who catch it need hospital care. It is therefore quite normal for you to worry about how the COVID-19 outbreak will affect you and your loved ones.

We can channel our concerns into actions to protect ourselves, our loved ones and our community. First and foremost among these actions is:

- Regular and thorough hand-washing with soap and water. If soap and water aren't immediately available use an alcohol-based hand sanitizer.
- Avoid touching your eyes, mouth, and nose.
- Practice good respiratory hygiene. Cover your cough or sneeze.
- If you are unwell stay at home. Do not go to school, work or attend social gatherings.

## **Should I wear a mask to protect myself?**

Only wear a mask if you are ill with COVID-19 symptoms (especially coughing) or looking after someone who may have COVID-19. Disposable face mask can only be used once. If you are not ill or looking after someone who is ill then you are wasting a mask. There is a world-wide shortage of masks, so WHO urges people to use masks wisely.

The World Health Organization advises rational use of medical masks to avoid unnecessary wastage of precious resources and misuse of masks.

The most effective ways to protect yourself and others against COVID-19 are to:

- frequently clean your hands;
- cover your cough with the bend of elbow or tissue; and

- maintain a distance of at least one meter (three feet) from people who are coughing or sneezing.

## Policy guidelines for COVID-19 protective supplies

Upon proper declaration, Customs will make duty relief available to all importers for [personal protective equipment and supplies \(PPE\)](#) under CPC 4235, subject to the following conditions:

1. PPE must be used only in connection with disease prevention and control (refer to “Disease prevention and control” below).
2. Only PPE certified by the Director of Health (the Director) will qualify for duty relief (refer to “Qualifying goods” below).

### Qualifying goods

#### Policy guidelines for the certification of goods under CPC 4235

For additional information, please see:

- [Guidance on importing goods for disaster relief](#)
- [Imported goods: End-use Relief](#)

## COVID-19 resource material

- [All COVID-19 News](#)
- [All COVID-19 Videos](#)
- [Resources](#)
- [Guidance](#)
- [Forms](#)
- [Emergency Powers \(COVID-19 Shelter in Place\) Regulations 2020](#)
- [Emergency Powers \(COVID-19 Shelter in Place\) Regulations 2020 Exemption for designated Public Officers](#)
- [Proclamation - State of Emergency](#)
- [Proclamation summoning both Houses](#)
- [Health Officers Appointment under Quarantine Act](#)
- [Summary Offences \(Curfew\) Order 2020](#)
- [NOTICE OF EXEMPTIONS: Summary Offences \(Curfew\) Order 2020](#)
- [Public Health Act 1949](#)
- [Quarantine Act 2017](#)
- [Quarantine \(Travel Ban\) \(No. 2\) Order 2020](#)

## Public Health Closures

- [GN0351/2020 Public Health Closures - 29 March 2020](#)
- [GN0348/2020 Public Health \(COVID-19\) Notice - 24 March 2020](#)
- [GN0347/2020 Public Health Closures - 23 March 2020](#)
- [GN0344/2020 Public Health Closures - 20 March 2020](#)

## Contact Information

---

Ministry of [Health](#)

Department of [Health Headquarters](#)

### Physical Address

Continental Building  
25 Church Street  
Hamilton HM 12  
Bermuda

(441) 278-4900

[Send us an email](#)

### Mailing Address

P.O. Box HM 380  
Hamilton HM BX  
Bermuda

## Resources

---


[Coronavirus/COVID-19 Prevention Tips](#) 

[Do you have: a cold, cough, or fever?](#) 

[Stop the Spread](#) 

[Self-Quarantine Precautions and Symptom Log](#) 

[Isolation precautions](#) 

[What you need to know about COVID-19 \(Coronavirus\)](#) 

[Social Distancing](#) 

[Status of Operations](#) 

[Self-Quarantine Guidance](#) 

[Guidance for Bermuda's Seniors regarding the COVID-19 Outbreak](#) 

[Guidance for Long-term Care Facility Operators in Bermuda](#) 

[Guidance for Religious Gatherings](#) 

[Guidance for Bermuda's Public Schools](#) 

[Guidance for Day Care Operators](#) 

[Guidance for Hotels, Guest Houses and Airbnb operators in Bermuda](#) 

[Guidance for Hotels](#) 

[Guidance for Pregnant Women](#) 

[COVID-19 Patient Symptom Check List and Self-Assessment](#) 

[Essential Services Contacts](#) 

[View all recent Press Releases](#)

[View all COVID-19 Videos](#)

[The Official Gazette: Public Health Closures](#)

[Summary Offences \(Curfew\) Order 2020](#)

[NOTICE OF EXEMPTIONS: Summary Offences \(Curfew\) Order 2020](#)

[Traveller Screening Form](#)

[COVID 19 - Unemployment Benefit Application](#)

[Employment Violations Tip Line](#)

[Curfew Exemption Form](#)

[Returning Bermuda Residents Form](#)

## You might be interested in

---

[Infectious diseases in children](#)

[Increased Influenza Incidence](#)

[Health Ministry Issues Influenza Advisory](#)



Strategy for  
**Sustainable Water**  
& Wastewater Servicing  
St. Georges Parish - Bermuda



GOVERNMENT OF BERMUDA

[Learn More](#)



For general enquiries, [contact us](#)  
T. (441) 295-5151

[PATI](#) | [Privacy](#) | [Departments and Ministries](#)

© 2020 Government of Bermuda