



GOVERNMENT OF  
BERMUDA

What are you looking for?



[Click here for Coronavirus \(COVID-19\) Information and Updates | COVID-19 Forms](#)

## Health Information

The Epidemiology and Surveillance Unit helps to manage and monitor the status of health in Bermuda by:

- Regularly recording, interpreting, and reporting data that reflect the health of our community;
- Reviewing health problems and outbreaks; this includes chronic diseases, injuries, and social factors that influence health status
- Detecting and monitoring epidemics and public health emergencies.
- Providing health information upon request in a variety of formats.

### International alerts:

#### Coronavirus (COVID-19, formerly 2019-nCoV)

Coronavirus (COVID-19) is a new respiratory illness.

The World Health Organization has declared the current coronavirus situation a Pandemic.

Working closely with partner agencies, the Ministry of Health is monitoring this rapidly evolving health situation and will keep the public up to date on Bermuda's response.

### Learn more about COVID-19

#### Ebola

The World Health Organization has declared the Ebola outbreak in the Democratic Republic of the Congo a Public Health Emergency of International Concern. The risk of introduction to Bermuda is low. Travelers to the outbreak area should pay attention to their health during travel and for 21 days following travel; if fever or other symptoms develop, the medical care provider is to be informed of the recent travel prior to attending for medical care.

### Local Alerts:

*Updated 4th March 2020*

The Epidemiology and Surveillance Unit has received increased reports of fever and respiratory symptoms including influenza. Residents are encouraged to ensure that all vaccinations are current.

The Epidemiology and Surveillance Unit continues to receive reports of gastroenteritis (diarrhea and vomiting illness) including campylobacter.

## Disease Reporting Forms

We collect health information from various contact points in the community to monitor the health of our Island and identify any concerns. Below are forms for reporting:

- [Physician Reporting Forms](#) 
- [Physician Reporting Form \(Example - Communicable Diseases\)](#) 
- [Physician Reporting Form \(Example - Syndromic Surveillance\)](#) 
- [School and other Childcare Facilities Outbreak Form](#) 
- [Reportable Diseases](#) 
- [Syndrome Definitions](#) 
- [CARPHA Hotel Reporting System](#)

## Disease Fact Sheets

We have prepared fact sheets on common infectious diseases, all of which are available in PDF format. Find more information about:

<a href="#">Chickenpox</a> 	<a href="#">Hepatitis A</a> 	<a href="#">MRSA</a> 
<a href="#">Chikungunya</a> 	<a href="#">Hepatitis B &amp; C</a> 	<a href="#">Mumps</a>
<a href="#">Conjunctivitis</a> 	<a href="#">Impetigo</a>	<a href="#">Pertussis - Whooping Cough</a>
<a href="#">Diarrhea and Vomiting Illness</a> 	<a href="#">Influenza</a>	<a href="#">Rotavirus</a> 
<a href="#">Enterovirus D68</a> 	<a href="#">Measles</a>	<a href="#">Scabies</a>
<a href="#">Foodborne Illness</a>	<a href="#">Meningitis</a>	<a href="#">Strep Throat</a>
<a href="#">Hand, Foot and Mouth Disease</a> 	<a href="#">MERS CoV</a>	<a href="#">Tonsillitis</a>
<a href="#">Head Lice</a>	<a href="#">Mononucleosis &amp; Epstein Barr Virus</a>	<a href="#">Novel Coronavirus (nCoV).pdf</a> 

## Guidelines

We developed these reports to provide help on issues that concern groups or organizations in the community.

- [Guidance on Infection Control in Schools and Other Childcare Setting](#) 

- [Surveillance Manual](#) 

## Reports

Our reports provide in-depth review of Bermuda's data and population health.

- [Steps to a Well Bermuda Survey 2014 \(PAHO Version\)](#) 
- [Steps to a Well Bermuda Survey 2014](#) 
- [Steps to a Well Bermuda 2014 Fact Sheet](#) 
- [Health in Review Report 2011](#) 
- [Health in Review 2017 , 2nd Edition](#) 
- [Health Survey of Adults in Bermuda 2011](#)
- [Burden of Illness Report 2012](#) 
- [Well Bermuda National Health Promotion Strategy](#) 
- [Health Survey of Adults and Children 2006](#) 

## Requests

If you are seeking a presentation on the Island's data and information, or there is data you are seeking, which is not available here, please complete the appropriate request form:

- [Data Request Form](#) 
- [Presentation Request Form](#) 

[Printer-friendly version](#)

## Contact Information

---

Ministry of [Health](#)

Department of [Office of the Chief Medical Officer](#)

### Epidemiology and Surveillance Unit

Continental Building  
25 Church Street  
Hamilton HM 12  
Bermuda

(441) 278-4900

[Send us an email](#)

### Online Services

[Request a health-related presentation](#)

[View more](#)

## Resources

---

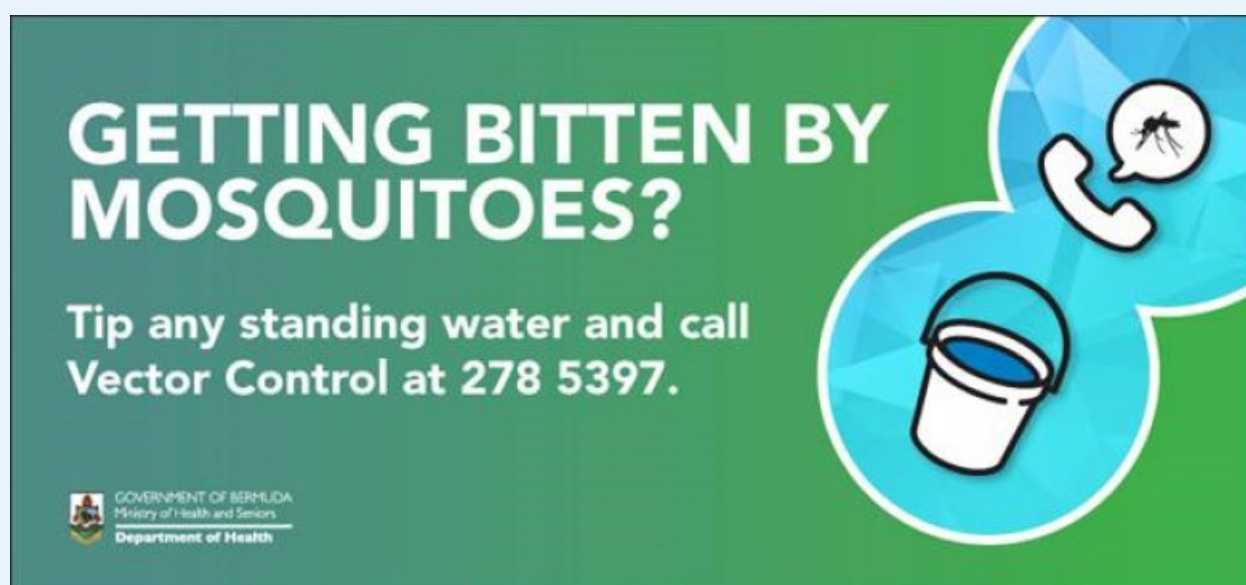
[Reportable Diseases](#) 

Data Request Form   
Presentation Request Form   
Syndrome Definitions   
Physician Reporting Forms   
Physician Reporting Form (Example - Communicable Diseases)   
Physician Reporting Form (Example - Syndromic Surveillance)   
CARPHA Tourism and Health Programme

## You might be interested in

---

[How to avoid and report scams](#)  
[Environmental Obligations for Vessels Visiting Bermuda](#)  
[Technological advantages of doing business in Bermuda](#)



For general enquiries, [contact us](#)  
T. (441) 295-5151