



GOVERNMENT OF
BERMUDA

What are you looking for?



[Click here for Coronavirus \(COVID-19\) Information and Updates](#) | [COVID-19 Forms](#)

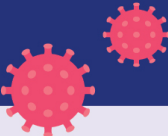
**Health Screening Registration >> [Check Availability](#) | [COVID-19 App](#)
>> [HealthIQ](#)**

Novel Coronavirus (COVID-19)

Bermuda is closely monitoring the global developments of the Coronavirus (COVID-19) through the [World Health Organization \(WHO\)](#) and with our regional public health partners – [Public Health England](#), [Pan-American Health Organization](#) and [Caribbean Public Health Agency](#).

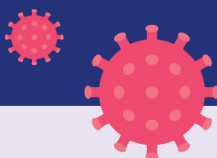
Bermuda is currently in PHASE 1 Limited Business

- Retail and restaurants for curbside pickup and delivery only
- Construction, mechanical and landscaping
- Parks, beaches and golf courses
- Skeleton Government and Court Services
- Limited Public Transportation
- Limited numbers for gatherings
- CURFEW IN PLACE FROM 10PM – 6AM



COVID-19

(Coronavirus)



Phase 2 Reopening of Bermuda

from 21 May 2020

Version 2
Updated 18 May 2020

PHASE 2 – EXPANSION OF SERVICES

Retail stores

Retail stores to open for in-store customers and standard to be 20% of approved fire occupancy inside at any one time AND to follow same alphabetical shopping days:

- A-F on Monday and Thursday;
- G-Q on Tuesday and Friday; and
- R-Z on Wednesday and Saturday.

Restaurants and bars

Restaurants open for outdoor dining and **NOT** dining indoors.

Licensed bars with outdoor bars permitted to open on same criteria as restaurants.

Subject to the approval of the Ministry of Health.

Recreation

Requirement for those boating to be from same household to be removed but still only a maximum of ten people with physical distancing.

Playgrounds and outdoor gym equipment to be opened.

Day Care

Licensed Day Care Centres can apply to Ministry of Health to be allowed to open.

Weddings and funerals

Outdoor weddings and funerals to have maximum of 20 people with masks and physical distancing.

Personal services

Beauty salons and barbers to open for limited services – public health requirements and PPE use to be set out.

Working from home

Remote working and working from home still required, where reasonably practicable.

Grocery stores to maintain current operation

- A-F on Monday and Thursday;
- G-Q on Tuesday and Friday; and
- R-Z on Wednesday and Saturday.


Also in operation

- Construction, mechanical and landscaping;
- Parks, beaches and golf courses;
- Skeleton government and court Services;
- Limited Public Transportation; and
- Limited numbers for gatherings (no more than ten people with physical distancing in place).

THE BERMUDA POLICE SERVICE AND ROYAL BERMUDA REGIMENT WILL BE MONITORING PHYSICAL DISTANCING AND PUBLIC HEALTH STANDARD COMPLIANCE.

CURFEW IN PLACE FROM 10PM – 6AM

The Ministry of Health will provide guidance when it is safe to move to the next phase. All activities will be governed by strict physical distancing.



GOVERNMENT OF BERMUDA

Stay informed on the latest developments about COVID-19 by visiting the Government of Bermuda's website coronavirus.gov.bm

[View all COVID-19 Press Releases](#)

[View all COVID-19 Videos](#)

[View all COVID-19 Resource Material](#)

The current World Health Organization risk assessment for novel coronavirus (COVID-19) is very high risk globally. It is advised that all countries prepare for the possibility of COVID-19 in their communities. Everyone has a role to play in getting ready and staying healthy by practicing everyday prevention measures like frequent hand washing, staying home when sick and covering coughs and sneezes. The World Health Organization has declared the current coronavirus situation as a pandemic. A pandemic is the increased and sustained transmission of a disease across many countries.

Surveillance for respiratory illness has been enhanced in collaboration with local public health partners. Persons with respiratory illness including fever and cough should call ahead and inform their health care provider of their travel history prior to attending for medical care.

This is a rapidly changing situation. Please regularly check this page for updates.



UPDATE

COVID-19 (Coronavirus)



Data is as of 3:00 pm 19 May 2020

Port Health Monitoring	Number
Quarantine with public health supervision	237

COVID-19 Testing	Total
Total	5705
Results negative	5580
Results positive	125
Transmission Status of Confirmed Cases	
Imported	39
Local Transmission [Known contact/source]	74
Local Transmission [Unknown contact/source]	10
Under Investigation	2
Status of Confirmed Cases	
Recovered	78
Active (non-hospitalized)	34
Active (hospitalized)	4
Deceased	9

Quarantine with public health supervision: All adults entering Bermuda are required to quarantine with public health supervision in a government quarantine facility for 14 days. These individuals will be monitored for symptoms during their time in quarantine. Exemptions allowed to self-quarantine at home for minors and for medical reasons.

Self-quarantine with public health supervision: All persons entering Bermuda from 17 March 2020 are to self-quarantine with public health supervision. Health personnel are in communication with these persons over the course of the self-quarantine period having provided a plan for self-monitoring for symptoms and clear instructions for notifying a health care provider before the person seeks health care if they develop fever, cough, or difficulty breathing.

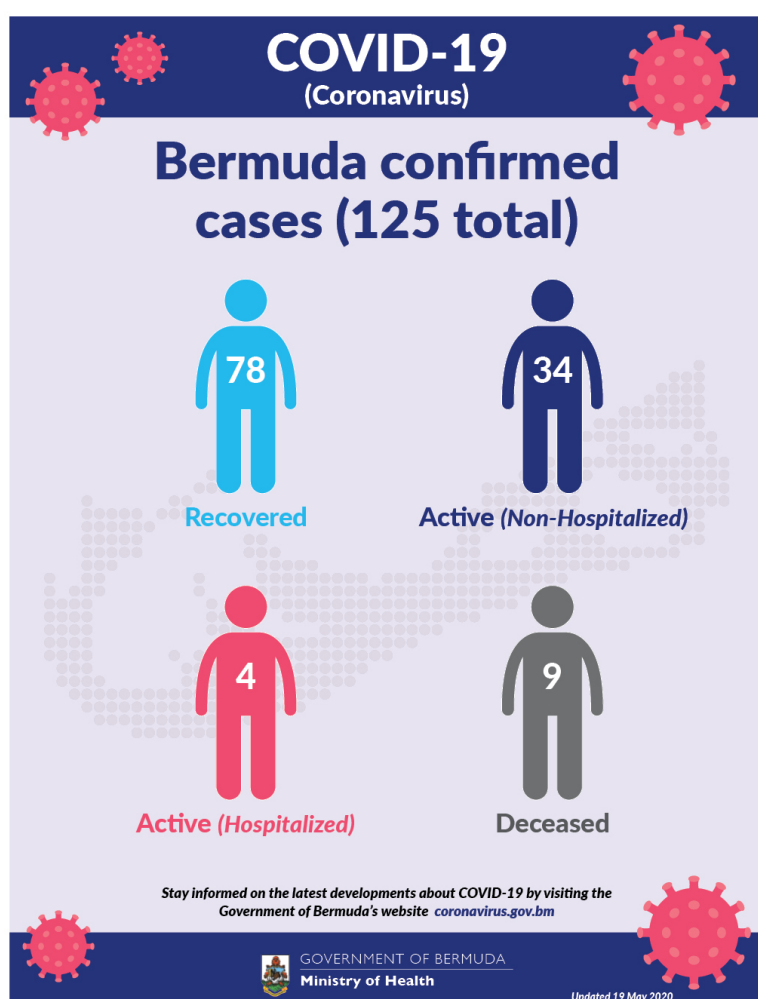
Imported: Cases acquired outside of Bermuda.

Local transmission: Cases acquired within Bermuda

Under investigation: Type of transmission has not yet been determined. These cases are not imported and are likely the result of local transmission.

Recovered: Person has had no fever for at least 72 hours (3 days) without the use of fever-reducing medication, other symptoms have improved and at least 14 days have passed since onset of symptoms.

Country status: Local transmission.



COVID-19 Health Screening

Welcome to the Health Department's COVID-19 health screening registration form for the Bermuda Government Molecular Diagnostic Testing Laboratory at the old White's Supermarket at Southside. Please choose and register for a timeslot that suits you for your screening. Please ensure to bring your confirmation number with you for your screening. Instructions: Please remain in your car or on your bike, with a mask on and your windows up until directed. Your results will be communicated to you by your doctor.

[Check Availability](#)

Return to Work Guidance

COVID-19 has brought about unprecedented changes to communities around the world and Bermuda has not been excluded. In light of these changes, business owners and managers have several questions on what business operations should look like in the post COVID-19 environment. In addition to preserving business operations to ensure economic viability, the protection of employee health and safety is paramount. For further guidance, visit gov.bm/coronavirus-workplace

Approved Businesses

The Government of Bermuda is committed to supporting the business community during this difficult time. All businesses listed are approved and authorized to conduct business in accordance with the Shelter in Place Regulations 2020.


View the list of [approved Permitted Businesses](#)

COVID-19 modelling data - 24 April 2020

The numbers generated through this model cannot be interpreted as predictions of what will occur during the current COVID-19 pandemic. Rather, they should be treated as estimates of what might happen, based on the assumptions used in generating these estimates and the modelling strategy used. The model aims to provide decision makers with potentially useful but heavily caveated information that will be refined as more information becomes available. The point of the model is not to predict the future, it's to influence it, help us prepare for it and choose a good course of action.

Our analyses on COVID-19 infections, hospitalizations, and testing can be found at the links below:

[Summary for modelling for Bermuda](#) 

[Modelling Estimates for Bermuda and Potential impact of Non-Pharmaceutical Interventions \(NPIS\) 24 April 2020](#) 

Information for Travellers

A travel ban is in effect from 20 March 2020.

A travel ban is in place, disallowing travelers to Bermuda unless the person:
belongs to Bermuda,

- is a resident of Bermuda or a dependent who has permission to reside in Bermuda,
- is a crew member of a cargo or commercial aircraft,
- cargo ship, or
- has written permission of the Quarantine Authority of Bermuda to enter.

Anyone entering Bermuda shall comply with the requirements under the [Quarantine Act 2017](#) and the [Public Health Act 1949](#).

All persons entering Bermuda, residents, visitors, and crew, will be required to self-quarantine for 14 days from arrival. Visitors and crew may depart Bermuda based on their travel itinerary if shorter than 14 days if they remain asymptomatic.

[COVID-19 Screening Form for travellers arriving in Bermuda](#)

What is COVID-19?

COVID-19 is the infectious disease caused by the most recently discovered coronavirus. Coronaviruses are a large family of viruses which may cause illness in animals or humans. In humans, several coronaviruses are known to cause respiratory infections ranging from the common cold to more severe diseases such as Middle East Respiratory Syndrome (MERS) and Severe Acute Respiratory Syndrome (SARS).

What are the symptoms of COVID-19?

The most common symptoms of COVID-19 are fever, tiredness, and dry cough. Some persons may have aches and pains, nasal congestion, runny nose, sore throat or diarrhea. These symptoms are usually mild and begin gradually. Some people become infected but don't develop any symptoms and don't feel unwell.

Most people (about 80%) recover from the disease without needing special treatment. Around one out of every six people who gets COVID-19 becomes seriously ill and develops difficulty breathing. Older people, and those with underlying medical problems like high blood pressure, heart problems or diabetes, are more likely to develop serious illness. People with fever, cough and difficulty breathing should seek medical attention and call in advance.

How does COVID-19 spread?

People can catch COVID-19 from others who have the virus.

The disease can spread from person to person through small droplets from the nose or mouth which are spread when a person with COVID-19 coughs or exhales. These droplets land on objects and surfaces around the person. Other people then catch COVID-19 by touching these objects or surfaces, then touching their eyes, nose or mouth. If you think a surface may be infected, clean it with simple disinfectant to kill the virus and protect yourself and others.

People can also catch COVID-19 if they breathe in droplets from a person with COVID-19 who coughs out or exhales droplets. Try to maintain at least two metres (six feet) distance between yourself and anyone who is coughing or sneezing.

The risk of catching COVID-19 from someone with no symptoms at all is very low. COVID-19 is not spread by mosquitos, water, or food.

Should I worry about COVID-19?

Illness due to COVID-19 infection is generally mild, especially for children and young adults. However, it can cause serious illness: about one in every five people who catch it need hospital care. It is therefore quite normal for you to worry about how the COVID-19 outbreak will affect you and your loved ones.

We can channel our concerns into actions to protect ourselves, our loved ones and our community. First and foremost among these actions is:

- Regular and thorough hand-washing with soap and water. If soap and water aren't immediately available use an alcohol-based hand sanitizer.
- Avoid touching your eyes, mouth, and nose.
- Practice good respiratory hygiene. Cover your cough or sneeze.
- If you are unwell stay at home. Do not go to school, work or attend social gatherings.

Policy guidelines for COVID-19 protective supplies

Upon proper declaration, Customs will make duty relief available to all importers for [personal protective equipment and supplies \(PPE\)](#) under CPC 4235, subject to the following conditions:

1. PPE must be used only in connection with disease prevention and control (refer to "Disease prevention

and control” below).

2. Only PPE certified by the Director of Health (the Director) will qualify for duty relief (refer to “Qualifying goods” below).

Qualifying goods

Policy guidelines for the certification of goods under CPC 4235

For additional information, please see:

- [Guidance on importing goods for disaster relief](#)
- [Imported goods: End-use Relief](#)

COVID-19 resource material

- [All COVID-19 News](#)
- [All COVID-19 Videos](#)
- [Resources](#)
- [Guidance](#)
- [Work Place Guidance](#)
- [Forms](#)
- [Regulations](#)
- [Public Health Closures](#)

[Printer-friendly version](#)

Online Services

[Request a health-related presentation](#)

[Get tested for sexually transmitted infections](#)

[Get an Application for Residence](#)

[Applying for an Occasional Liquor Licence](#)

[Public Service Bursary Award Scheme](#)

[View more](#)

Resources

[Return to Work Recommendations for Business Operations in Bermuda](#) 

[Department of Immigration Phased Resumption of Services Info Guide](#) 

[Approved Permitted Businesses](#)

[Updated Shelter in Place Regulations](#)

[View all recent Press Releases](#)

[View all COVID-19 Videos](#)

[COVID-19 Regulations](#)
[Public Health Closures](#)
[Resources](#)
[Guidance](#)
[Work Place Guidance](#)
[Forms](#)
[Garbage and Recycling Schedule April 2020](#)
[Florida Atlantic University online Certificate in Hospitality & Tourism Management](#)
[Fintech Training](#)
[Infection Prevention and Control Training](#)
[HealthIQ](#)

You might be interested in

[Infectious diseases in children](#)
[Increased Influenza Incidence](#)
[Health Ministry Issues Influenza Advisory](#)



Fighting global financial
crime is your concern

Learn why the anti-money
laundering campaign is just
GOOD BUSINESS

www.goodbusiness.bm



GOVERNMENT OF BERMUDA
Ministry of Finance



For general enquiries, [contact us](#)
T. (441) 295-5151