



GOVERNMENT OF
BERMUDA

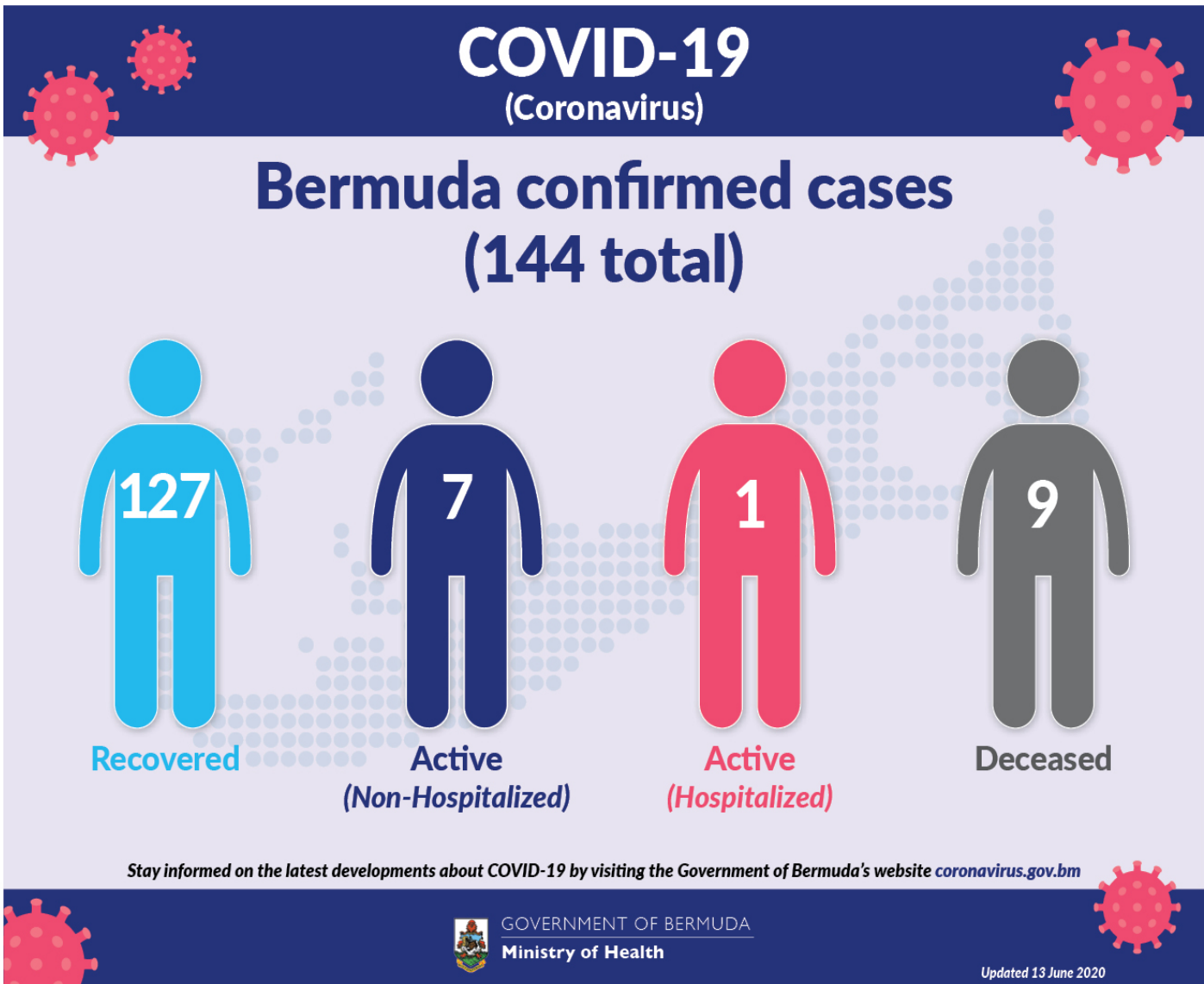
Coronavirus (COVID-19) update

The current World Health Organization risk assessment for novel coronavirus (COVID-19) is very high risk globally. It is advised that all countries prepare for the possibility of COVID-19 in their communities. Everyone has a role to play in getting ready and staying healthy by practicing everyday prevention measures like frequent hand washing, staying home when sick and covering coughs and sneezes. The World Health Organization has declared the current coronavirus situation as a pandemic. A pandemic is the increased and sustained transmission of a disease across many countries.

Surveillance for respiratory illness has been enhanced in collaboration with local public health partners. Persons with respiratory illness including fever and cough should call ahead and inform their health care provider of their travel history prior to attending for medical care.

This is a rapidly changing situation. Please regularly check this page for updates.

COVID-19 Dashboard - 13 June



Contact Information

Ministry of [Health](#)

Department of [Health Headquarters](#)

Physical Address

Continental Building
25 Church Street
Hamilton HM 12
Bermuda

(441) 278-4900

[Send us an email](#)

Mailing Address

P.O. Box HM 380
Hamilton HM BX
Bermuda

You might be interested in

- [Guidelines for radioactive equipment](#)
- [Health programmes in Bermuda](#)
- [The Zika Virus](#)



TRAVELLING SOON?

Seek advice from the travel clinic (278 6460) to protect your health and your community.




 GOVERNMENT OF BERMUDA
Ministry of Health and Seniors
Department of Health

The graphic features a red background with white text. On the right, there are two overlapping circular icons: the top one shows a family of four (two adults and two children) and the bottom one shows a hospital building with a red cross on top. At the bottom left is the official logo of the Government of Bermuda, Ministry of Health and Seniors, Department of Health.

