



GOVERNMENT OF
BERMUDA

What are you looking for?



[Click here for Coronavirus \(COVID-19\) Information and Updates](#) | [Check on your health today, visit HealthIQ](#)

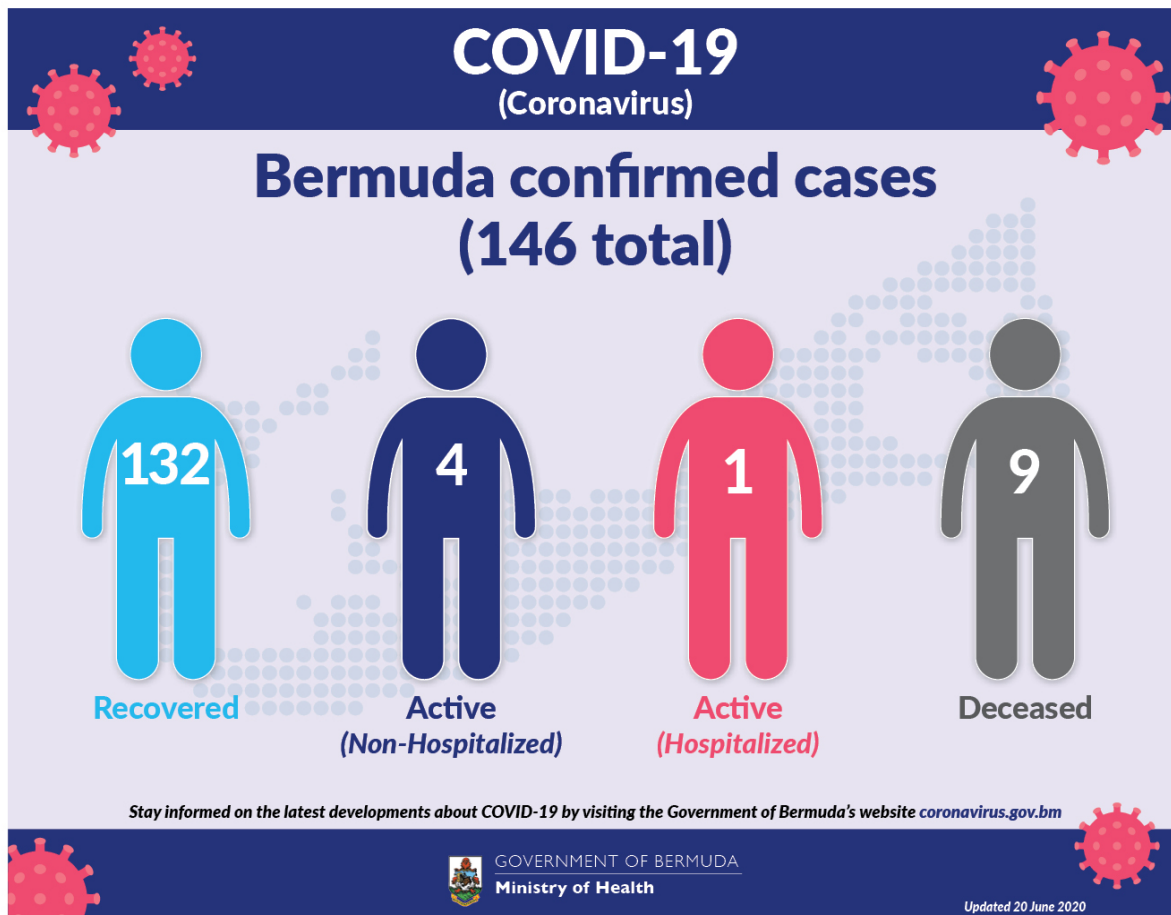
Coronavirus (COVID-19) update

The current World Health Organization risk assessment for novel coronavirus (COVID-19) is very high risk globally. It is advised that all countries prepare for the possibility of COVID-19 in their communities. Everyone has a role to play in getting ready and staying healthy by practicing everyday prevention measures like frequent hand washing, staying home when sick and covering coughs and sneezes. The World Health Organization has declared the current coronavirus situation as a pandemic. A pandemic is the increased and sustained transmission of a disease across many countries.

Surveillance for respiratory illness has been enhanced in collaboration with local public health partners. Persons with respiratory illness including fever and cough should call ahead and inform their health care provider of their travel history prior to attending for medical care.

This is a rapidly changing situation. Please regularly check this page for updates.

Dashboard 20 June 2020 



Data as of 3:00 pm 20 June 2020

Port Health Monitoring	Number
Quarantine with public health supervision	178

COVID-19 Testing	Total
Total	9979
Results negative	9833
Results positive	146
Transmission Status of Confirmed Cases	
Imported	42
Local Transmission [Known contact/source]	85
Local Transmission [Unknown contact/source]	12
Under Investigation	7

Status of Confirmed Cases	
Recovered	132
Active (non-hospitalized)	4
Active (hospitalized)	1
Deceased	9

Quarantine with public health supervision: All adults entering Bermuda are required to quarantine with public health supervision in a government quarantine facility for 14 days. These individuals will be monitored for symptoms during their time in quarantine. Exemptions allowed to self-quarantine at home for minors and for medical reasons.

Self-quarantine with public health supervision: All persons entering Bermuda from 17 March 2020 are to self-quarantine with public health supervision. Health personnel are in communication with these persons over the course of the self-quarantine period having provided a plan for self-monitoring for symptoms and clear instructions for notifying a health care provider before the person seeks health care if they develop fever, cough, or difficulty breathing.

Imported: Cases acquired outside of Bermuda.

Local transmission: Cases acquired within Bermuda

Under investigation: Type of transmission has not yet been determined. These cases are not imported and are likely the result of local transmission.

Recovered: Person has had no fever for at least 72 hours (3 days) without the use of fever-reducing medication, other symptoms have improved and at least 14 days have passed since onset of symptoms or testing date. Laboratory confirmation of at least one negative result may also be used as evidence of recovery.

Country status: Local transmission.

COVID-19 Reopening Indicators

Bermuda is monitoring critical indicators to see how we are doing in managing COVID-19 and assess our readiness to move to the next phase of our reopening plan. These indicators are updated on Mondays and Thursday.

As of 18th June 2020:

Lead Measures

As of 18th June 2020

"How Bermuda is doing; monitor bi-weekly to indicate likelihood of movement to the next phase"

Preventive Behaviours



Face mask wearing	
HealthIQ Reports on observation of mask wearing	
Physical Distancing	
HealthIQ Reports on observation of 3 – 6ft physical distancing	
Adoption of technology	
Number of people participating in Health IQ / other apps	

Capacity



Testing capacity	
In stock of all lab consumables, reagents and kits plus enabling resources: staff & PPE	
PPE supplies	
In stock of: surgical mask, N95 mask, gloves, gowns and face shields	

Lag Measures

"How Bermuda has done so far; to confirm at the end of each phase that it is safe to move to the next phase"

Transmission



WHO country classification	
WHO country classification	
Transmission	
Proportion of cases able to be linked to known cases or clusters	
Reproduction rate	
Real time reproduction number (average over last 7 days)	

Cases and hospitalizations



Hospitalizations	
New COVID-related hospitalizations	
Critical care	
New COVID cases in critical care	
COVID-19 cases	
Number of new cases	

Definitions

Lag measures:

6. Classification: WHO Country classification

- Green: Sporadic cases
- Amber: Local transmission
- Red: Community transmission

7. Transmission: Proportion of cases able to be linked to known cases or clusters

- <10% unknown transmission
- >20% unknown transmission

8. Reproduction rate: Real time reproduction number average over last 7 days

- $R_t < 1.0$
- $R_t > 1.4$

9. Hospitalizations: New COVID-related hospitalizations

- <7 over last 7 days
- >21 over last 7 days

10. Critical care: COVID-related ICU cases

- <4 concurrent per week
- >7 concurrent per week

- <12 over last 7 days
- >35 over last 7 days

The numbers generated through this model cannot be interpreted as predictions of what will occur during the current COVID-19 pandemic. Rather, they should be treated as estimates of what might happen, based on the assumptions used in generating these estimates and the modelling strategy used. The model aims to provide decision makers with potentially useful but heavily caveated information that will be refined as more information becomes available. The point of the model is not to predict the future, it's to influence it, help us prepare for it and choose a good course of action.

SUMMARY FOR MODELLING FOR BERMUDA

The numbers generated through this model cannot be interpreted as predictions of what will occur during the current COVID-19 pandemic. Rather, they should be treated as estimates of what might occur, based on the current situation and the assumptions made in the model, and the modelling strategy used. The model aims to provide decision makers with generally useful but highly contextual information that will be refined as more information becomes available. The goal of the model is to assist in decision making. It is intended to help us prepare for what could be a long course of action.

Public Health England has advised that the Bermuda World Case Scenario be used as a starting line. This provides a ceiling figure for the maximum foreseeable impacts. It was recommended that a conservative estimate of the impact of containment measures be generated for every infection count of 25 and used as the World Case Scenario.

The Better Case Scenario is estimated based on the combined impact of numerous public health interventions including new isolation, quarantine of contacts, school closures and social distancing measures. It is expected that the World Case Scenario model this scenario.

The modelling was done using a SEIR framework, adapted, which incorporated model with numerous assumptions, including a recovery (DEPR) scenario, whereby all symptomatic individuals are more infectious than asymptomatic individuals and that recovery is difficult and is sensitive to infection in short term.

COVID-19 (Coronavirus)

Bermuda Modelling: Infections per day

Infections per Day		Total Infections	
Scenario	Peak	Peak	Peak Date
World Case Scenario	54,100	1,360	23 May 2020
Better Case Scenario	17,200	201	23 May 2020

The comparison of the impact of COVID-19 at World Case Scenario (the international modelling) to a peak in early to better Case Scenario (localisation of international modelling) in a graph is presented as follows:

Scenario	Peak	Peak Date
World Case Scenario	54,100	23 May 2020
Better Case Scenario	17,200	23 May 2020

It is important to not get fixated on the exact numbers on the top of the peak as these are changing based on the best situation and the evidence – and modelling is ongoing and will refine the predictions.

While the current model, the reproductive number is less than one, after phase 1, it is anticipated that it will be close to one.

The overall goal is to get the reproductive number at or below 1 which could result in a prolonged containment or prolonged lower level transmission and reduce the peak demand on healthcare services.

The World Health Organization has also stated that the most difficult scenario may involve returning outbreaks, once interrupted with lower level transmission.

There are very large considerations around the impact of the model, the assumptions made, the different policies and the extent to which the population experiences adverse risk taking behaviour. Local real time data and intelligence is crucial to ensure what is happening locally and the impact on healthcare capacity.

COVID-19 Health Screening

Welcome to the Health Department's COVID-19 health screening registration form for the Bermuda Government Molecular Diagnostic Testing Laboratory at the old White's Supermarket at Southside. Please choose and register for a timeslot that suits you for your screening. Please ensure to bring your confirmation number with you for your screening. Instructions: Please remain in your car or on your bike, with a mask on and your windows up until directed. Your results will be communicated to you by your doctor.

[Check Availability](#)

[Printer-friendly version](#)

Contact Information

Ministry of [Health](#)

Department of [Health Headquarters](#)

Physical Address

Continental Building
25 Church Street
Hamilton HM 12
Bermuda

(441) 278-4900

[Send us an email](#)

Mailing Address

P.O. Box HM 380
Hamilton HM BX
Bermuda

You might be interested in

[Guidelines for radioactive equipment](#)

[Health programmes in Bermuda](#)

[The Zika Virus](#)



Strategy for Sustainable Water and Wastewater Servicing in St. George's Parish

The Study

The Government of Bermuda, Ministry of Public Works, has initiated a study to formulate a strategy for sustainable water and wastewater servicing in St. George's Parish. The objectives of the project involve an information review of the current water supply and sewage systems in St. George's Parish, to establish appropriate policies in order to:

- Offer options for management of service delivery;
- Identify infrastructure investment required to deliver a sustainable service for the Plan Period (25 years); and
- Complete a financial analysis of the current and proposed service delivery systems.

The Process

The study will define existing constraints and capacities, consider and evaluate alternatives and identify preferred water and wastewater servicing alternatives. The methodology will follow a process similar to the master planning process of the Municipal Engineers Association of Ontario, Canada.

Public Information and Consultation

The government wishes to ensure that anyone with an interest in this study has an opportunity to be involved and to provide input. Opportunities to provide the public with information will be made available via Public Information Centers (PIC's) and Town Hall meetings as well as on the project website, found here: www.bermudawater.info. The government is urging St. George's businesses and residents to answer the short survey found at the listed site.

If you have any suggestions for or comments on the study please send any email to the project website: stgeorgewwwplan@gov.bm.



For general enquiries, [contact us](#)
T. (441) 295-5151