



GOVERNMENT OF
BERMUDA

What are you looking for?



[Click here for Coronavirus \(COVID-19\) Information and Updates](#) | [Check on your health today, visit HealthIQ](#) | [Apply for the Bermuda Travel Authorisation](#)

Coronavirus (COVID-19) update

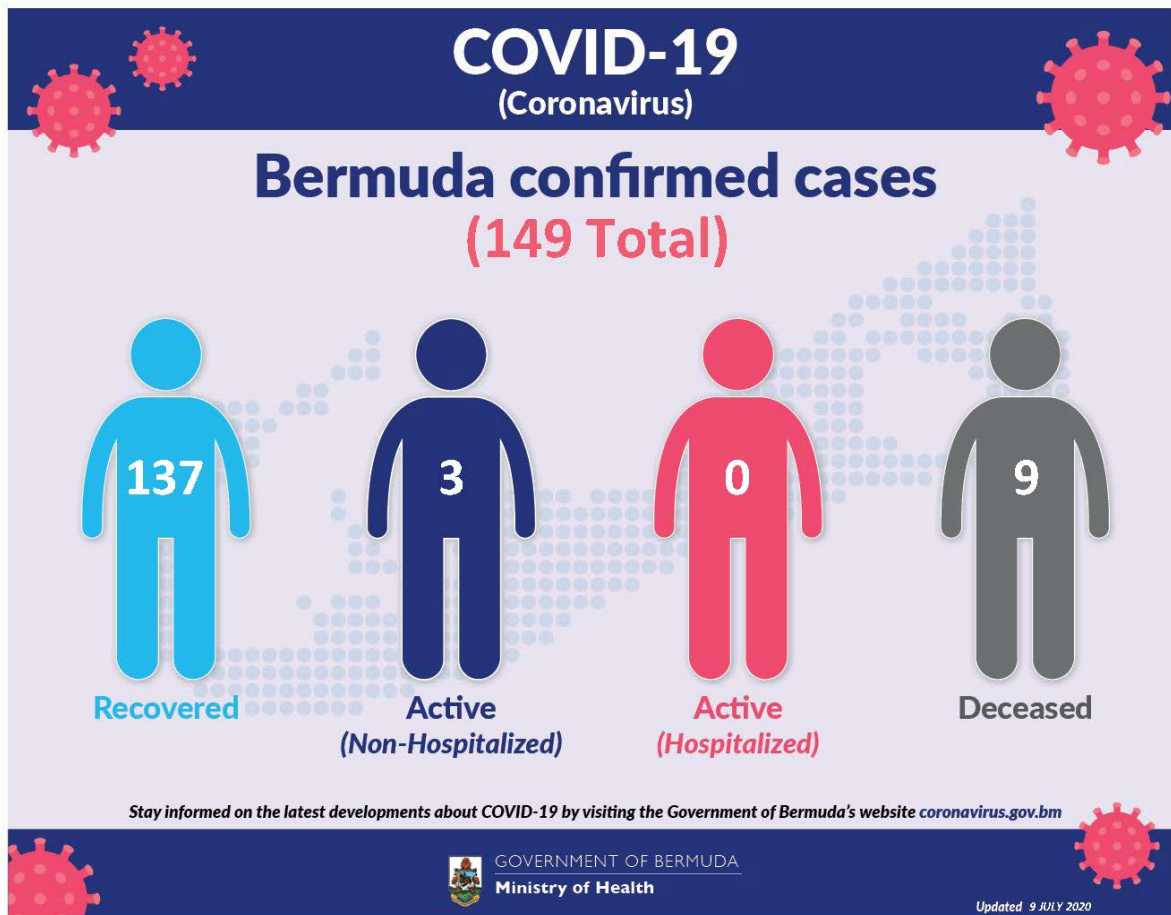
The current World Health Organization risk assessment for novel coronavirus (COVID-19) is very high risk globally. It is advised that all countries prepare for the possibility of COVID-19 in their communities. Everyone has a role to play in getting ready and staying healthy by practicing everyday prevention measures like frequent hand washing, staying home when sick and covering coughs and sneezes. The World Health Organization has declared the current coronavirus situation as a pandemic. A pandemic is the increased and sustained transmission of a disease across many countries.

Surveillance for respiratory illness has been enhanced in collaboration with local public health partners. Persons with respiratory illness including fever and cough should call ahead and inform their health care provider of their travel history prior to attending for medical care.

This is a rapidly changing situation. Please regularly check this page for updates.

COVID-19 Dashboard 09 July, 2020





Data as of 3:00 pm 09 July 2020

| COVID-19 Testing | Total |
|---|-------|
| Total | 13047 |
| Results negative | 12898 |
| Results positive | 149 |
| Transmission Status of Confirmed Cases | |
| Imported | 45 |
| Local Transmission [Known contact/source] | 85 |
| Local Transmission [Unknown contact/source] | 16 |
| Under Investigation | 3 |
| Status of Confirmed Cases | |
| Recovered | 137 |
| Active (non-hospitalized) | 3 |

| | |
|-----------------------|---|
| Active (hospitalized) | 0 |
| Deceased | 9 |

Imported: Cases acquired outside of Bermuda.

Local transmission: Cases acquired within Bermuda

Under investigation: Type of transmission has not yet been determined. These cases are not imported and are likely the result of local transmission.

Recovered: Person has had no fever for at least 72 hours (3 days) without the use of fever-reducing medication, other symptoms have improved and at least 14 days have passed since onset of symptoms or testing date. Laboratory confirmation of at least one negative result may also be used as evidence of recovery.

Country status: Sporadic Cases

COVID-19 Reopening Indicators

Bermuda is monitoring critical indicators to see how we are doing in managing COVID-19 and assess our readiness to move to the next phase of our reopening plan. These indicators are updated on Mondays and Thursday.

As of 9th July 2020:

Lead Measures

As of 9th July 2020

"How Bermuda is doing; monitor bi-weekly to indicate likelihood of movement to the next phase"

Preventive Behaviours



| | |
|--|--|
| Face mask wearing | |
| HealthIQ Reports on observation of mask wearing | |
| Physical Distancing | |
| HealthIQ Reports on observation of 3 – 6ft physical distancing | |
| Adoption of technology | |
| Number of people participating in Health IQ / other apps | |

Capacity



| | |
|---|--|
| Testing capacity | |
| In stock of all lab consumables, reagents and kits plus enabling resources: staff & PPE | |
| PPE supplies | |
| In stock of: surgical mask, N95 mask, gloves, gowns and face shields | |

Lag Measures

"How Bermuda has done so far; to confirm at the end of each phase that it is safe to move to the next phase"

Transmission



| | |
|--|--|
| WHO country classification | |
| WHO country classification | |
| Transmission | |
| Proportion of cases able to be linked to known cases or clusters | |
| Reproduction rate | |
| Real time reproduction number (average over last 7 days) | |

Cases and hospitalizations



| | |
|------------------------------------|--|
| Hospitalizations | |
| New COVID-related hospitalizations | |
| Critical care | |
| New COVID cases in critical care | |
| COVID-19 cases | |
| Number of new cases | |

Definitions

Lead measures:

1. Face mask wearing: HealthIQ Reports on observation of mask wearing –

- >95% report public wearing masks
- <80% report public wearing masks

2. Physical distancing: HealthIQ Reports on observation of 3 – 6ft physical distancing -

- >95% report public maintaining distance
- <80% report public maintaining distance

3. Adoption of Technology: Number of people participating in HealthIQ or Apps (public) -

- >10,000 unique respondents (All time)
- <5,000 unique respondents

4. Testing capacity: In stock of all lab consumables, reagents and kits plus enabling resources: staff & PPE

- >3 months' supply
- <1 months' supply

5. PPE supplies (critical): In stock of: surgical mask, N95 mask, gloves, gowns and face shields

- >5 months' supply
- >3 months' supply

Lag measures:

6. Classification: WHO Country classification

- Green: Sporadic cases
- Amber: Local transmission
- Red: Community transmission

7. Transmission: Proportion of cases able to be linked to known cases or clusters

- <10% unknown transmission
- >20% unknown transmission

8. Reproduction rate: Real time reproduction number average over last 7 days

- Rt <1.0
- Rt >1.4

9. Hospitalizations: New COVID-related hospitalizations

- <7 over last 7 days
- >21 over last 7 days

10. Critical care: COVID-related ICU cases

- <4 concurrent per week
- >7 concurrent per week

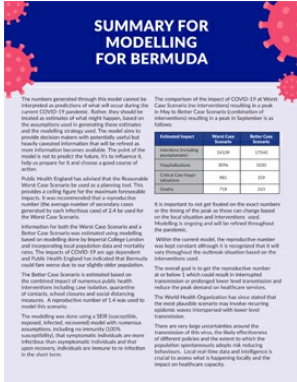
11. COVID-19 cases: Number of new cases per week

- <12 over last 7 days
- >35 over last 7 days

Coronavirus (COVID-19) Modelling Data - 24 April

The numbers generated through this model cannot be interpreted as predictions of what will occur during the current COVID-19 pandemic. Rather, they should be treated as estimates of what might happen, based on the assumptions used in generating these estimates and the modelling strategy used. The model aims to provide decision makers with potentially useful but heavily caveated information that will be refined as more information becomes available. The point of the model is not to predict the future, it's to influence it, help us prepare for it and choose a good course of action.

Our analyses on COVID-19 infections, hospitalizations, and testing can be found at the links below:



SUMMARY FOR MODELLING FOR BERMUDA

The numbers generated through this model cannot be interpreted as predictions of what will occur during the current COVID-19 pandemic. Rather, they should be used as a tool to help inform decision-making and the modelling strategy used. The model aims to provide decision-makers with information that will be useful in making decisions about the impact of various interventions on the health and economic situation of the island.

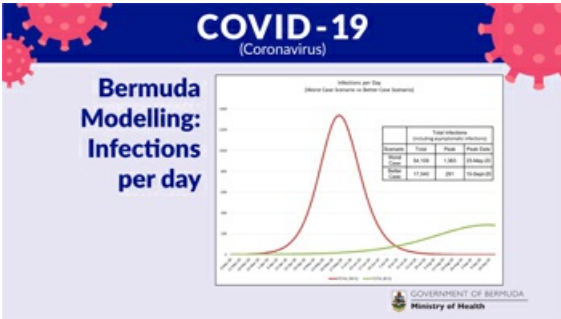
Public Health England has advised that the Reinforce Model Case Scenario is used as a starting point. This provides a useful figure for the maximum foreseeable impact. It is recommended that a conservative number (the average number of secondary cases generated by each infectious case) of 1.4 be used for the Reinforce Case Scenario.

Information for both the Worst Case Scenario and a Better Case Scenario is presented. The Worst Case Scenario is based on modelling done by Imperial College London and the Reinforce Case Scenario is based on modelling done by the University of Warwick. The impact of COVID-19 on age-dependent and Public Health England has indicated that the Reinforce Case Scenario is the most likely to be observed.

The Better Case Scenario is estimated based on the assumption that the Reinforce Case Scenario is correct, but that the impact of interventions including case isolation, quarantine of contacts, school closure and social distancing measures. A reproductive number of 1.4 was used to model this scenario.

The modelling was done using a SEIR (Susceptible, Exposed, Infected, Recovered) model with numerous assumptions, including the effectiveness of interventions, the impact of interventions on the health and economic situation of the island, and the impact of interventions on the health and economic situation of the island.

The impact of interventions on the health and economic situation of the island is a complex issue and the model is a simplification of reality. The model is a tool to help inform decision-making and the modelling strategy used. The model aims to provide decision-makers with information that will be useful in making decisions about the impact of various interventions on the health and economic situation of the island.



COVID-19 (Coronavirus)

Bermuda Modelling: Infections per day

Infections per Day (Worst Case Scenario vs Better Case Scenario)

It is important to not get fixated on the exact numbers or the timing of the peak as these are largely based on the Reinforce Case Scenario and the Reinforce Case Scenario is the most likely to be observed. Modelling is ongoing and will be refined throughout the pandemic.

Within the current model, the reproductive number was kept constant although it is recognized that it will vary throughout the outbreak based on the interventions used.

The overall goal is to get the reproductive number as close to 1 as possible which would result in sustained transmission of the virus being limited and reduce the peak demand on healthcare services.

The World Health Organization has also stated that the most desirable scenario may involve securing sufficient space to implement with lower level transmission.

There are very large uncertainties around the transmission of this virus, the health effectiveness of different policies and the extent to which the Reinforce Case Scenario is the most likely to be observed. Use of real time data and intelligence is crucial to assess what is happening locally and the impact on healthcare capacity.

| Intervention | Reproductive Number | Peak Date | Peak Infections |
|-------------------------|---------------------|------------|-----------------|
| Reinforce Case Scenario | 1.4 | 2020-05-01 | 1,000 |
| Worst Case Scenario | 1.4 | 2020-05-01 | 1,000 |
| Better Case Scenario | 1.4 | 2020-05-01 | 1,000 |

| Total Infections (including past infections) | | | Peak Date |
|--|-------|-------|------------|
| Worst Case Scenario | 1,000 | 1,000 | 2020-05-01 |
| Better Case Scenario | 1,000 | 1,000 | 2020-05-01 |

GOVERNMENT OF BERMUDA
Ministry of Health

Summary for modelling for Bermuda

Modelling Estimates for Bermuda and Potential impact of Non-Pharmaceutical Interventions (NPIS) 24 April 2020

COVID-19 Health Screening

Welcome to the Health Department's COVID-19 health screening registration form for the Bermuda Government Molecular Diagnostic Testing Laboratory at the old White's Supermarket at Southside. Please choose and register for a timeslot that suits you for your screening. Please ensure to bring your confirmation number with you for your screening. Instructions: Please remain in your car or on your bike, with a mask on and your windows up until directed. Your results will be communicated to you by your doctor.

[Check Availability](#)

[Printer-friendly version](#)

Contact Information

Ministry of [Health](#)

Department of [Health Headquarters](#)

Physical Address

Continental Building
25 Church Street
Hamilton HM 12
Bermuda

(441) 278-4900

[Send us an email](#)

Mailing Address

P.O. Box HM 380
Hamilton HM BX
Bermuda

You might be interested in

[Guidelines for radioactive equipment](#)

WANT TO AVOID BITES?

Wear mosquito repellent and light-coloured clothing that covers your arms and legs.



For general enquiries, [contact us](#)
T. (441) 295-5151

[PATI](#) | [Privacy](#) | [Departments and Ministries](#)

© 2020 Government of Bermuda