



GOVERNMENT OF
BERMUDA

What are you looking for?



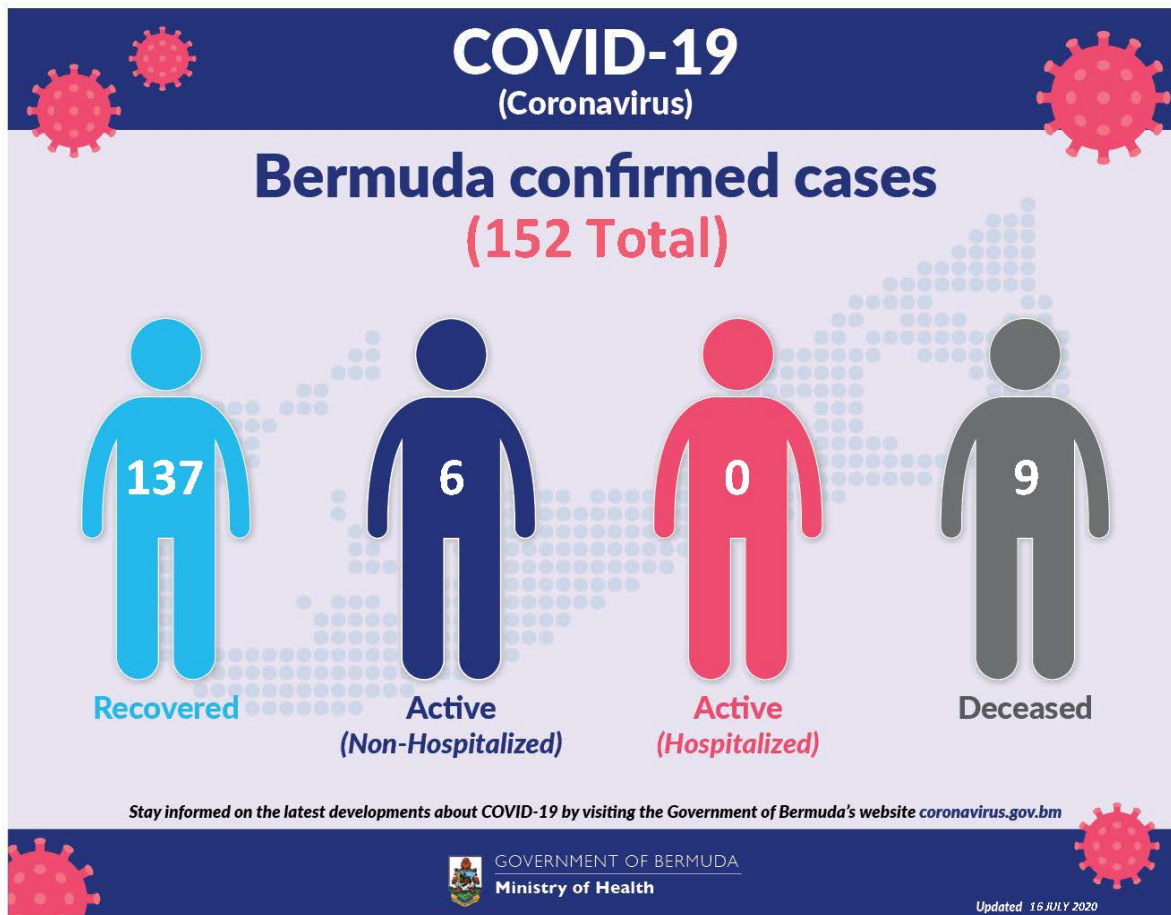
[Click here for Coronavirus \(COVID-19\) Information and Updates](#) | [Check on your health today, visit HealthIQ](#) | [Apply for the Bermuda Travel Authorisation](#)

Coronavirus (COVID-19) update

The current World Health Organization risk assessment for novel coronavirus (COVID-19) is very high risk globally. It is advised that all countries prepare for the possibility of COVID-19 in their communities. Everyone has a role to play in getting ready and staying healthy by practicing everyday prevention measures like frequent hand washing, staying home when sick and covering coughs and sneezes. The World Health Organization has declared the current coronavirus situation as a pandemic. A pandemic is the increased and sustained transmission of a disease across many countries.

Surveillance for respiratory illness has been enhanced in collaboration with local public health partners. Persons with respiratory illness including fever and cough should call ahead and inform their health care provider of their travel history prior to attending for medical care.

This is a rapidly changing situation. Please regularly check this page for updates.



Data as of 3:00 pm 16 July 2020

COVID-19 Testing	Total
Total	15114
Results negative	14962
Results positive	152
Transmission Status of Confirmed Cases	
Imported	48
Local Transmission [Known contact/source]	85
Local Transmission [Unknown contact/source]	18
Under Investigation	1
Status of Confirmed Cases	
Recovered	137

Active (non-hospitalized)	6
Active (hospitalized)	0
Deceased	9

Imported: Cases acquired outside of Bermuda.

Local transmission: Cases acquired within Bermuda

Under investigation: Type of transmission has not yet been determined. These cases are not imported and are likely the result of local transmission.

Recovered: Person has had no fever for at least 72 hours (3 days) without the use of fever-reducing medication, other symptoms have improved and at least 14 days have passed since onset of symptoms or testing date. Laboratory confirmation of at least one negative result may also be used as evidence of recovery.

Country status: Sporadic Cases

COVID-19 Reopening Indicators

Bermuda is monitoring critical indicators to see how we are doing in managing COVID-19 and assess our readiness to move to the next phase of our reopening plan. These indicators are updated on Mondays and Thursday.

As of 16th July 2020:

Lead Measures

As of 16th July 2020

"How Bermuda is doing; monitor bi-weekly to indicate likelihood of movement to the next phase"

Preventive Behaviours



Face mask wearing	
HealthIQ Reports on observation of mask wearing	
Physical Distancing	
HealthIQ Reports on observation of 3 – 6ft physical distancing	
Adoption of technology	
Number of people participating in Health IQ / other apps	

Capacity



Testing capacity	
In stock of all lab consumables, reagents and kits plus enabling resources: staff & PPE	
PPE supplies	
In stock of: surgical mask, N95 mask, gloves, gowns and face shields	

Lag Measures

"How Bermuda has done so far; to confirm at the end of each phase that it is safe to move to the next phase"

Transmission



WHO country classification	
WHO country classification	
Transmission	
Proportion of cases able to be linked to known cases or clusters	
Reproduction rate	
Real time reproduction number (average over last 7 days)	

Cases and hospitalizations



Hospitalizations	
New COVID-related hospitalizations	
Critical care	
New COVID cases in critical care	
COVID-19 cases	
Number of new cases	

Definitions

Lead measures:

1. Face mask wearing: HealthIQ Reports on observation of mask wearing –

- >95% report public wearing masks
- <80% report public wearing masks

2. Physical distancing: HealthIQ Reports on observation of 3 – 6ft physical distancing -

- >95% report public maintaining distance
- <80% report public maintaining distance

3. Adoption of Technology: Number of people participating in HealthIQ or Apps (public) -

- >10,000 unique respondents (All time)
- <5,000 unique respondents

4. Testing capacity: In stock of all lab consumables, reagents and kits plus enabling resources: staff & PPE

- >3 months' supply
- <1 months' supply

5. PPE supplies (critical): In stock of: surgical mask, N95 mask, gloves, gowns and face shields

- >5 months' supply
- >3 months' supply

Lag measures:

6. Classification: WHO Country classification

- Green: Sporadic cases
- Amber: Local transmission
- Red: Community transmission

7. Transmission: Proportion of cases able to be linked to known cases or clusters

- <10% unknown transmission
- >20% unknown transmission

8. Reproduction rate: Real time reproduction number average over last 7 days

- Rt <1.0
- Rt >1.4

9. Hospitalizations: New COVID-related hospitalizations

- <7 over last 7 days
- >21 over last 7 days

10. Critical care: COVID-related ICU cases

- <4 concurrent per week
- >7 concurrent per week

11. COVID-19 cases: Number of new cases per week

- <12 over last 7 days
- >35 over last 7 days

Coronavirus (COVID-19) Modelling Data - 24 April

The numbers generated through this model cannot be interpreted as predictions of what will occur during the current COVID-19 pandemic. Rather, they should be treated as estimates of what might happen, based on the assumptions used in generating these estimates and the modelling strategy used. The model aims to provide decision makers with potentially useful but heavily caveated information that will be refined as more information becomes available. The point of the model is not to predict the future, it's to influence it, help us prepare for it and choose a good course of action.

Our analyses on COVID-19 infections, hospitalizations, and testing can be found at the links below:

SUMMARY FOR MODELLING FOR BERMUDA

The numbers generated through this model cannot be interpreted as predictions of what will occur during the COVID-19 pandemic. However, they should be treated as estimates of what might happen, based on the assumptions used in generating these estimates and the modelling strategy used. The model aims to provide decision makers with information that may be useful in determining what to do to control the pandemic in the event that it occurs. The model is not intended to provide information on the impact of the pandemic on the economy or on the health system. The model is not intended to provide information on the impact of the pandemic on the health system.

Public Health England has advised that the Reinforced Public Health Measures used in a previous test. This advice is being taken into account in the model. It is recommended that a representative number of early infectious cases of 2.6 be used for the Reinforced Public Health Measures.

Information for both the World Case Scenario and a Reinforced Public Health Measures scenario is provided based on modelling done to support policy making and incorporating local population data and mortality rates. The impact of COVID-19 on the population and public health England has indicated that Bermuda could have worse due to its high elderly population.

The Reinforced Public Health Measures scenario is based on the combined impact of numerous public health interventions including case isolation, quarantine of contacts, school closures and social distancing measures. A representative number of 2.6 was used to model this scenario.

The modelling was done using a SEIR (Susceptible, Exposed, Infected, Recovered) model, which assumes asymptomatic individuals, including asymptomatic individuals, are more infectious than symptomatic individuals and that asymptomatic individuals are immune to reinfection in the short term.

The comparison of the impact of COVID-19 at World Case Scenario for the Reinforced Public Health Measures scenario is shown in the table below. The Reinforced Public Health Measures scenario is shown in the table below.

Intervention Scenario	World Case Scenario	Reinforced Public Health Measures Scenario
Estimated Deaths	14,000	1,700
Estimated Cases	80,000	10,000
Estimated Deaths	800	100
Estimated Cases	700	100

It is important to not get fixated on the exact numbers or the timing of the peak as these are changing based on the local situation and interventions. Instead, it is important to focus on the overall shape of the curve.

The overall goal is to get the reproductive number as low as possible. It is recognized that it will not be achieved in the short term, but it is important to focus on the overall shape of the curve.

The World Health Organization has shown that the most effective measures to reduce the impact of the pandemic are non-pharmaceutical interventions such as social distancing, case isolation, and quarantine.

There are very large uncertainties around the transmission of the virus, the health effectiveness of different policies and the extent to which the population spontaneously adopts risk-reducing behaviours. Local data and modelling are crucial to assess what is happening locally and the impact on healthcare capacity.

Bermuda Modelling: Infections per day

COVID-19 (Coronavirus)

Summary Statistics			
Parameter	Value	Unit	Peak Date
Estimated Deaths	1,700		14 April 2020
Estimated Cases	10,000		14 April 2020
Estimated Deaths	100		14 April 2020
Estimated Cases	100		14 April 2020

COVID-19 Health Screening

Welcome to the Health Department's COVID-19 health screening registration form for the Bermuda Government Molecular Diagnostic Testing Laboratory at the old White's Supermarket at Southside. Please choose and register for a timeslot that suits you for your screening. Please ensure to bring your confirmation number with you for your screening. Instructions: Please remain in your car or on your bike, with a mask on and your windows up until directed. Your results will be communicated to you by your doctor.

[Check Availability](#)

Printer-friendly version

Contact Information

Ministry of Health

Department of Health Headquarters

Physical Address

Continental Building
25 Church Street
Hamilton HM 12
Bermuda

(441) 278-4900

[Send us an email](#)

Mailing Address

P.O. Box HM 380
Hamilton HM BX
Bermuda

You might be interested in

[Guidelines for radioactive equipment](#)

[Health programmes in Bermuda](#)

[The Zika Virus](#)

BEEN AWAY?

If you feel sick, see a doctor and
say where you have travelled.



GOVERNMENT OF BERMUDA
Ministry of Health and Seniors
Department of Health



For general enquiries, [contact us](#)
T. (441) 295-5151

[PATI](#) | [Privacy](#) | [Departments and Ministries](#)
© 2020 Government of Bermuda