



GOVERNMENT OF
BERMUDA

What are you looking for?



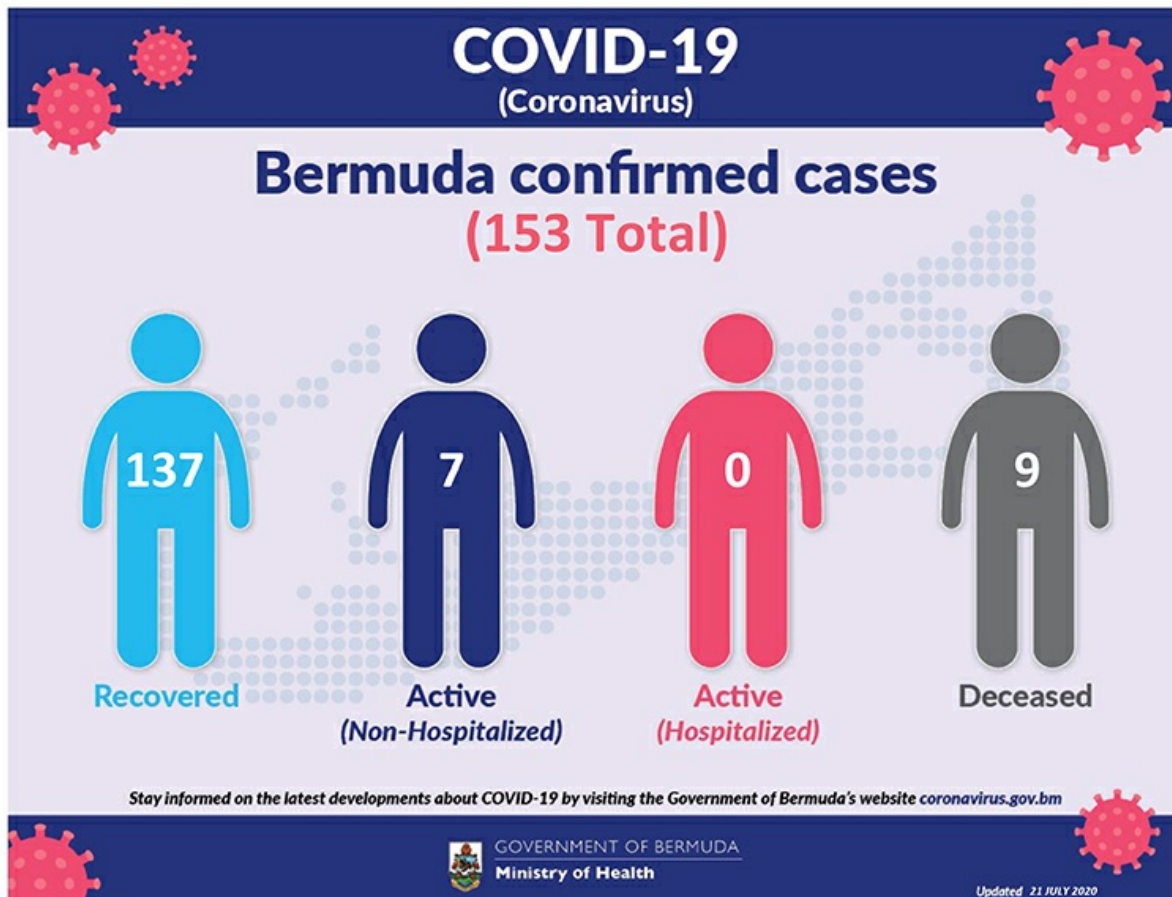
[Click here for Coronavirus \(COVID-19\) Information and Updates](#) | [Check on your health today, visit HealthIQ](#) | [Apply for the Bermuda Travel Authorisation](#)

Coronavirus (COVID-19) update

The current World Health Organization risk assessment for novel coronavirus (COVID-19) is very high risk globally. It is advised that all countries prepare for the possibility of COVID-19 in their communities. Everyone has a role to play in getting ready and staying healthy by practicing everyday prevention measures like frequent hand washing, staying home when sick and covering coughs and sneezes. The World Health Organization has declared the current coronavirus situation as a pandemic. A pandemic is the increased and sustained transmission of a disease across many countries.

Surveillance for respiratory illness has been enhanced in collaboration with local public health partners. Persons with respiratory illness including fever and cough should call ahead and inform their health care provider of their travel history prior to attending for medical care.

This is a rapidly changing situation. Please regularly check this page for updates.



Data as of 3:00 pm 21 July 2020

| COVID-19 Testing | Total |
|---|-------|
| Total | 17370 |
| Results negative | 17217 |
| Results positive | 153 |
| Transmission Status of Confirmed Cases | |
| Imported | 49 |
| Local Transmission [Known contact/source] | 85 |
| Local Transmission [Unknown contact/source] | 19 |
| Under Investigation | 0 |
| Status of Confirmed Cases | |
| Recovered | 137 |
| Active (non-hospitalized) | 7 |
| Active (hospitalized) | 0 |

Imported: Cases acquired outside of Bermuda.

Local transmission: Cases acquired within Bermuda

Under investigation: Type of transmission has not yet been determined. These cases are not imported and are likely the result of local transmission.

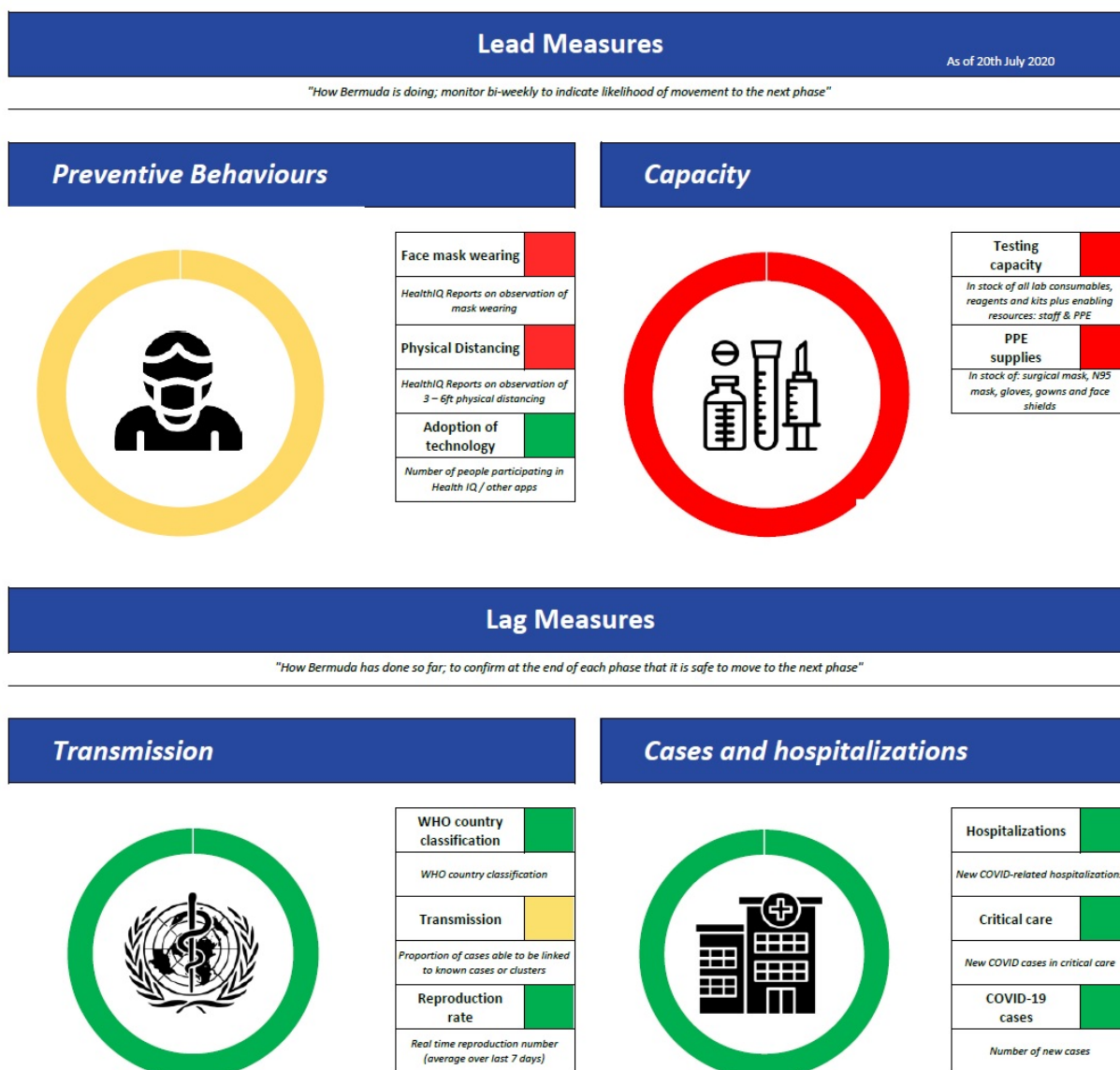
Recovered: Person has had no fever for at least 72 hours (3 days) without the use of fever-reducing medication, other symptoms have improved and at least 14 days have passed since onset of symptoms or testing date. Laboratory confirmation of at least one negative result may also be used as evidence of recovery.

Country status: Sporadic Cases

COVID-19 Reopening Indicators

Bermuda is monitoring critical indicators to see how we are doing in managing COVID-19 and assess our readiness to move to the next phase of our reopening plan. These indicators are updated on Mondays and Thursday.

As of 20th July 2020:



Definitions

Lead measures:

1. Face mask wearing: HealthIQ Reports on observation of mask wearing –

- >95% report public wearing masks
- <80% report public wearing masks

2. Physical distancing: HealthIQ Reports on observation of 3 – 6ft physical distancing -

- >95% report public maintaining distance
- <80% report public maintaining distance

3. Adoption of Technology: Number of people participating in HealthIQ or Apps (public) -

- >10,000 unique respondents (All time)
- <5,000 unique respondents

4. Testing capacity: In stock of all lab consumables, reagents and kits plus enabling resources: staff & PPE

- >3 months' supply
- <1 months' supply

5. PPE supplies (critical): In stock of: surgical mask, N95 mask, gloves, gowns and face shields

- >5 months' supply
- >3 months' supply

Lag measures:

6. Classification: WHO Country classification

- Green: Sporadic cases
- Amber: Local transmission
- Red: Community transmission

7. Transmission: Proportion of cases able to be linked to known cases or clusters

- <10% unknown transmission
- >20% unknown transmission

8. Reproduction rate: Real time reproduction number average over last 7 days

- $R_t < 1.0$
- $R_t > 1.4$

9. Hospitalizations: New COVID-related hospitalizations

- <7 over last 7 days
- >21 over last 7 days

10. Critical care: COVID-related ICU cases

- <4 concurrent per week
- >7 concurrent per week

11. COVID-19 cases: Number of new cases per week

- <12 over last 7 days
- >35 over last 7 days

Coronavirus (COVID-19) Modelling Data - 24 April

The numbers generated through this model cannot be interpreted as predictions of what will occur during the current COVID-19 pandemic. Rather, they should be treated as estimates of what might happen, based on the assumptions used in generating these estimates and the modelling strategy used. The model aims to provide decision makers with potentially useful but heavily caveated information that will be refined as more information becomes available. The point of the model is not to predict the future, it's to influence it, help us prepare for it and choose a good course of action.

Our analyses on COVID-19 infections, hospitalizations, and testing can be found at the links below:

SUMMARY FOR MODELLING FOR BERMUDA

The numbers generated through this model cannot be interpreted as predictions of what will occur during the current COVID-19 pandemic. Rather, they illustrate the potential consequences of various policy options, based on the assumptions used in generating those estimates and the resulting strategic goals. The model aims to provide decision makers with potentially useful but limited information that will be refined as more information becomes available. The model is not to predict the future. It is to influence it, to help us prepare for a more resilient and positive future.

Public Health England has advised that the Bermuda Health Case Scenario is used as a planning tool. This provides a rolling figure for the maximum foreseeable impacts. It is recommended that a scenario that neither the average number of secondary cases generated by each infectious case of 1.6 be used for the model nor the average number of secondary cases generated by each infectious case of 1.6 be used for the model.

Information for both the World Case Scenario and a Better Case Scenario is generated by the model based on modelling done by Imperial College London and incorporating local population data and variables. The results of COVID-19 are not modelled and Public Health England has indicated that Bermuda will face more than five years of socialisation.

The Better Case Scenario is estimated based on the combined impact of various public health interventions including Case Isolation, quarantine of contacts, school closures and social distancing measures. A significant number of cases would be prevented in this scenario.

The modelling was done using a SEIR (Susceptible, Exposed, Infected, Recovered) model with numerous assumptions, including an immunity to COVID-19, susceptibility, that symptomatic individuals are more infectious than asymptomatic individuals and that immunity to infections is immune to be reinjected in the short term.

The comparison of the impact of COVID-19 on World Case Scenario is illustrated resulting in a peak in the Better Case Scenario's population of approximately resulting in a peak in September '21 as follows:

| Estimated Date | World Case Scenario | Better Case Scenario |
|----------------|---------------------|----------------------|
| Estimated Date | 2021 | 2021 |
| Estimated Date | 2021 | 2021 |
| Estimated Date | 2021 | 2021 |

It is important to not be lulled on the exact numbers on the timing of the peak as these are being based on the best available information. While modelling is ongoing and will be refined throughout the pandemic.

Within the current model, the reproductive number was kept constant although it is recognized that it will vary throughout the outbreak situation based on the intervention level.

The overall goal is to get the reproductive number at or below 1 which could result in interrupting transmission or prolonged lower level transmission and reduce the peak demand on health services.

The Health Services Organization has also stated that the most plausible scenario would involve returning activities, when implemented with lower level interventions.

There are very large uncertainties around the population of the island, the health outcomes of different policies and the extent to which the population opportunities might be reduced in the long term. Local and real data and modelling is crucial to determine what is happening locally and the impact on healthcare capacity.

COVID-19 (Coronavirus)

Bermuda Modelling: Infections per day

| Infections per Day (Bermuda Case Scenario - Better Case Scenario) | | | |
|---|--|-----------------|-----------|
| | Case Infections (including asymptomatic) | Peak Infections | Peak Date |
| World | 2021 | 2021 | 2021 |
| Bermuda | 2021 | 2021 | 2021 |
| World | 2021 | 2021 | 2021 |

GOVERNMENT OF BERMUDA
Ministry of Health

Summary for modelling for Bermuda

Modelling Estimates for Bermuda and Potential impact of Non-Pharmaceutical Interventions (NPIs) 24 April 2020

COVID-19 Health Screening

Welcome to the Health Department's COVID-19 health screening registration form for the Bermuda Government Molecular Diagnostic Testing Laboratory at the old White's Supermarket at Southside. Please choose and register for a timeslot that suits you for your screening. Please ensure to bring your confirmation number with you for your screening. Instructions: Please remain in your car or on your bike, with a mask on and your windows up until directed. Your results will be communicated to you by your doctor.

[Check Availability](#)

Printer-friendly version

Contact Information

Ministry of Health

Department of Health Headquarters

Physical Address

Continental Building
25 Church Street
Hamilton HM 12
Bermuda

(441) 278-4900

[Send us an email](#)

Mailing Address

P.O. Box HM 380

You might be interested in

[Guidelines for radioactive equipment](#)

[Health programmes in Bermuda](#)

[The Zika Virus](#)

WANT TO AVOID BITES?

Wear mosquito repellent and light-coloured clothing that covers your arms and legs.



GOVERNMENT OF BERMUDA
Ministry of Health and Seniors
Department of Health



For general enquiries, [contact us](#)

T. (441) 295-5151

[PATI](#) | [Privacy](#) | [Departments and Ministries](#)

© 2020 Government of Bermuda