



GOVERNMENT OF  
BERMUDA

What are you looking for?



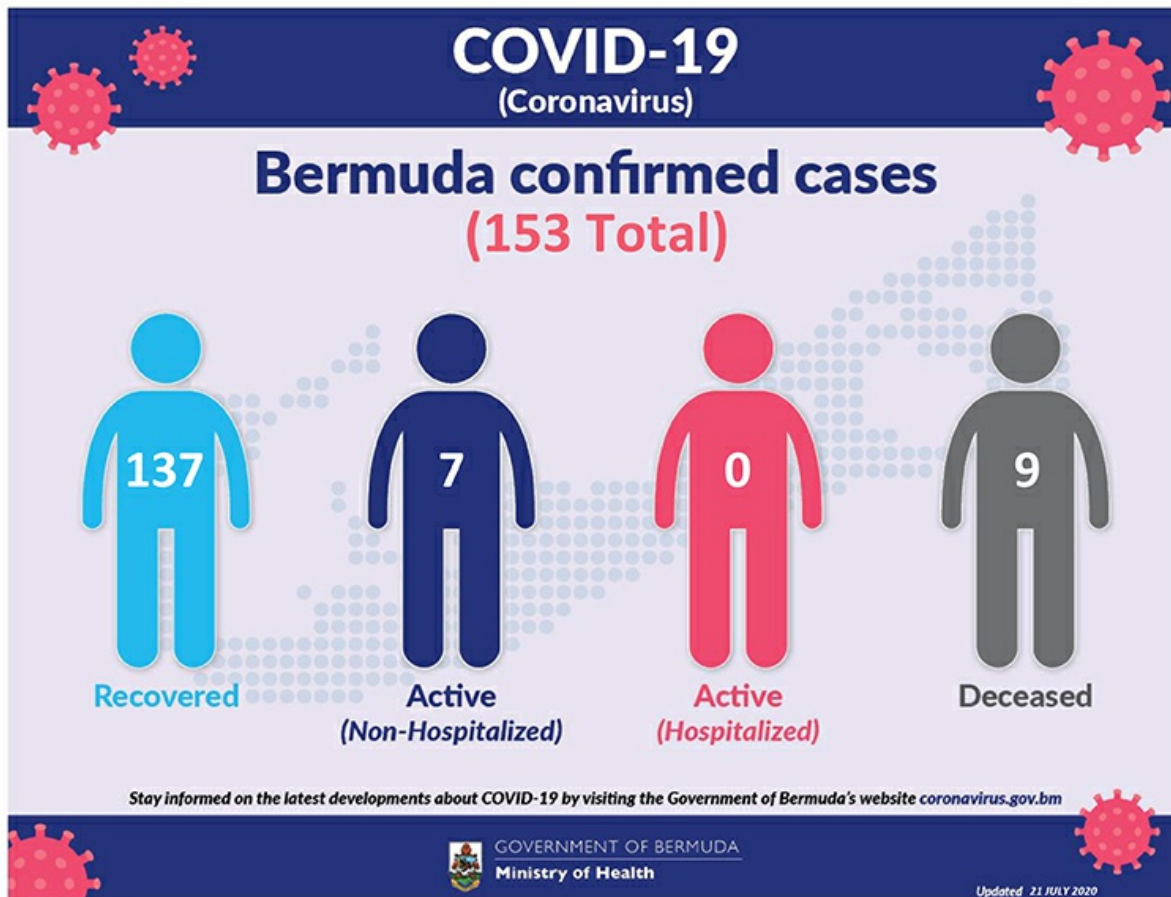
[Click here for Coronavirus \(COVID-19\) Information and Updates](#) | [Check on your health today, visit HealthIQ](#) | [Apply for the Bermuda Travel Authorisation](#)

## Coronavirus (COVID-19) update

The current World Health Organization risk assessment for novel coronavirus (COVID-19) is very high risk globally. It is advised that all countries prepare for the possibility of COVID-19 in their communities. Everyone has a role to play in getting ready and staying healthy by practicing everyday prevention measures like frequent hand washing, staying home when sick and covering coughs and sneezes. The World Health Organization has declared the current coronavirus situation as a pandemic. A pandemic is the increased and sustained transmission of a disease across many countries.

Surveillance for respiratory illness has been enhanced in collaboration with local public health partners. Persons with respiratory illness including fever and cough should call ahead and inform their health care provider of their travel history prior to attending for medical care.

This is a rapidly changing situation. Please regularly check this page for updates.



Data as of 3:00 pm 21 July 2020

| COVID-19 Testing                              | Total |
|---|-------|
| Total   | 17370 |
| Results negative                              | 17217 |
| Results positive                              | 153   |
| <b>Transmission Status of Confirmed Cases</b> |       |
| Imported                                      | 49    |
| Local Transmission [Known contact/source]     | 85    |
| Local Transmission [Unknown contact/source]   | 19    |
| Under Investigation                           | 0     |
| <b>Status of Confirmed Cases</b>              |       |
| Recovered                                     | 137   |
| Active (non-hospitalized)                     | 7     |
| Active (hospitalized)                         | 0     |

**Imported:** Cases acquired outside of Bermuda.

**Local transmission:** Cases acquired within Bermuda

**Under investigation:** Type of transmission has not yet been determined. These cases are not imported and are likely the result of local transmission.

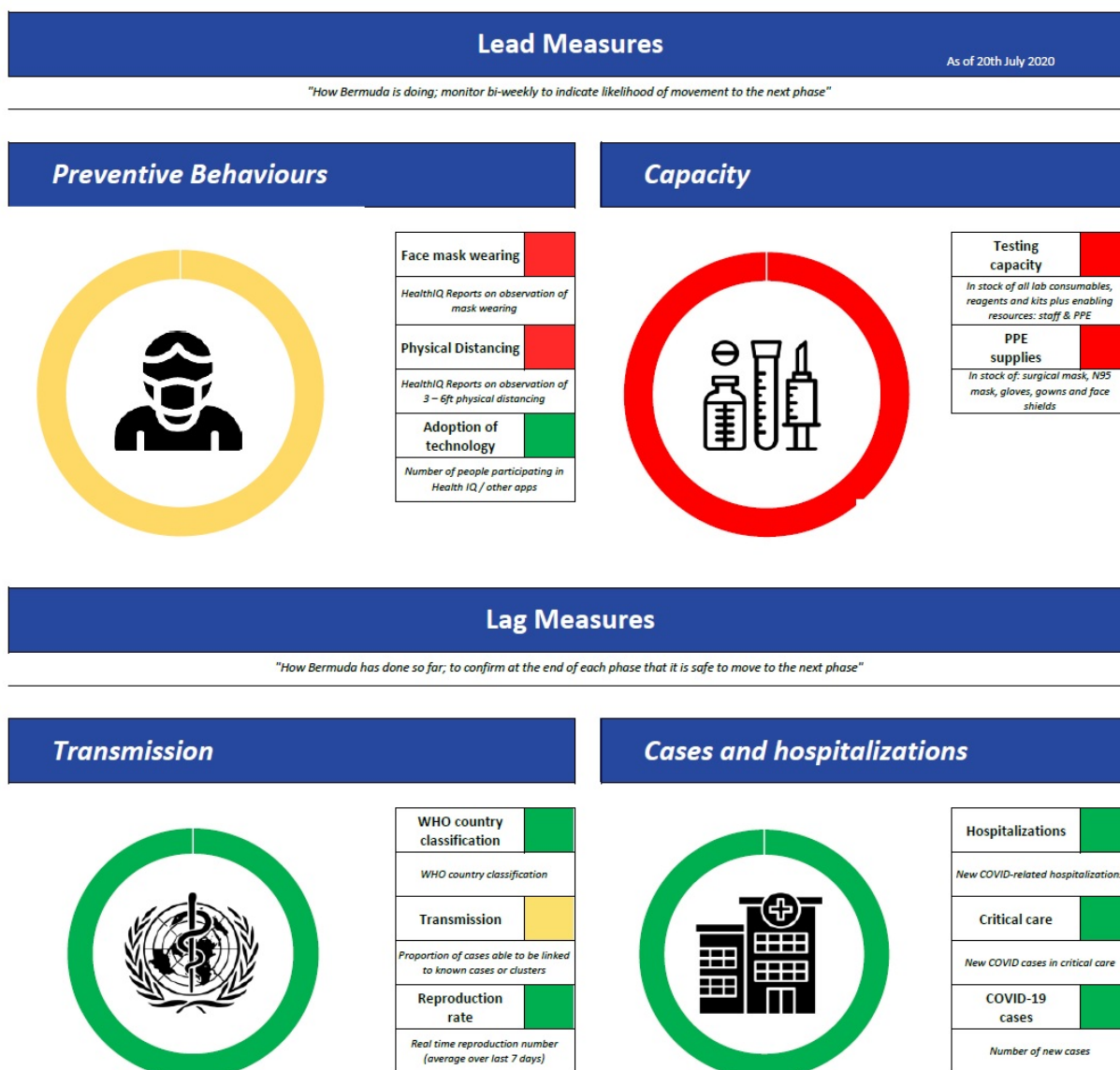
**Recovered:** Person has had no fever for at least 72 hours (3 days) without the use of fever-reducing medication, other symptoms have improved and at least 14 days have passed since onset of symptoms or testing date. Laboratory confirmation of at least one negative result may also be used as evidence of recovery.

**Country status:** Sporadic Cases

## COVID-19 Reopening Indicators

Bermuda is monitoring critical indicators to see how we are doing in managing COVID-19 and assess our readiness to move to the next phase of our reopening plan. These indicators are updated on Mondays and Thursday.

As of 20th July 2020:



## Definitions

### Lead measures:

**1. Face mask wearing:** HealthIQ Reports on observation of mask wearing –

- >95% report public wearing masks
- <80% report public wearing masks

**2. Physical distancing:** HealthIQ Reports on observation of 3 – 6ft physical distancing -

- >95% report public maintaining distance
- <80% report public maintaining distance

**3. Adoption of Technology:** Number of people participating in HealthIQ or Apps (public) -

- >10,000 unique respondents (All time)
- <5,000 unique respondents

**4. Testing capacity:** In stock of all lab consumables, reagents and kits plus enabling resources: staff & PPE

- >3 months' supply
- <1 months' supply

**5. PPE supplies (critical):** In stock of: surgical mask, N95 mask, gloves, gowns and face shields

- >5 months' supply
- >3 months' supply

### Lag measures:

**6. Classification: WHO Country classification**

- Green: Sporadic cases
- Amber: Local transmission
- Red: Community transmission

**7. Transmission:** Proportion of cases able to be linked to known cases or clusters

- <10% unknown transmission
- >20% unknown transmission

**8. Reproduction rate:** Real time reproduction number average over last 7 days

- $R_t < 1.0$
- $R_t > 1.4$

**9. Hospitalizations:** New COVID-related hospitalizations

- <7 over last 7 days
- >21 over last 7 days

**10. Critical care:** COVID-related ICU cases

- <4 concurrent per week
- >7 concurrent per week

**11. COVID-19 cases:** Number of new cases per week

- <12 over last 7 days
- >35 over last 7 days

## Coronavirus (COVID-19) Modelling Data - 24 April

The numbers generated through this model cannot be interpreted as predictions of what will occur during the current COVID-19 pandemic. Rather, they should be treated as estimates of what might happen, based on the assumptions used in generating these estimates and the modelling strategy used. The model aims to provide decision makers with potentially useful but heavily caveated information that will be refined as more information becomes available. The point of the model is not to predict the future, it's to influence it, help us prepare for it and choose a good course of action.

Our analyses on COVID-19 infections, hospitalizations, and testing can be found at the links below:

## SUMMARY FOR MODELLING FOR BERMUDA

The numbers generated through this model cannot be interpreted as predictions of what will occur during the current COVID-19 pandemic. Rather, they illustrate the potential consequences of various policy options, based on the assumptions used in generating these estimates and the resulting strategic goals. The model aims to provide decision makers with potentially useful but limited information that will be refined as more information becomes available. The model is not to predict the future. It is to influence it, to be a prompt for a more robust and resilient future.

Public Health England has advised that the Bermuda Health Case Scenario is used as a planning tool. This provides a rolling figure for the maximum foreseeable impacts. It is recommended that a scenario that outlines the average number of secondary cases generated by each infectious case of 1.6 be used for the model as a conservative estimate.

Information for both the World Case Scenario and a Better Case Scenario is generated by the model based on modelling done by Imperial College London and incorporating local population data and variables. The impact of COVID-19 on the population and public health system has been modelled and the model will be used to generate the maximum foreseeable impacts.

The Better Case Scenario is estimated based on the continued impact of various public health interventions including Case Isolation, quarantine of contacts, school closures and social distancing measures. A significant number of cases would be prevented.

The modelling was done using a SEIR (Susceptible, Exposed, Infected, Recovered) model with numerous assumptions, including a recovery rate of 0.25.

There are very large uncertainties around the model, particularly in the data, the assumptions of different policies and the extent to which the population's response is likely to be sustained. The model is not a prediction of what is happening in reality and the impact on healthcare capacity.

## COVID-19 (Coronavirus)

### Bermuda Modelling: Infections per day

Inflections are Day (Bermuda Case Scenario or Better Case Scenario)

| Day    | Peak Date | Peak Value |
|--------|-----------|------------|
| Day 1  | 1,200     | 1,200      |
| Day 2  | 1,200     | 1,200      |
| Day 3  | 1,200     | 1,200      |
| Day 4  | 1,200     | 1,200      |
| Day 5  | 1,200     | 1,200      |
| Day 6  | 1,200     | 1,200      |
| Day 7  | 1,200     | 1,200      |
| Day 8  | 1,200     | 1,200      |
| Day 9  | 1,200     | 1,200      |
| Day 10 | 1,200     | 1,200      |
| Day 11 | 1,200     | 1,200      |
| Day 12 | 1,200     | 1,200      |
| Day 13 | 1,200     | 1,200      |
| Day 14 | 1,200     | 1,200      |
| Day 15 | 1,200     | 1,200      |
| Day 16 | 1,200     | 1,200      |
| Day 17 | 1,200     | 1,200      |
| Day 18 | 1,200     | 1,200      |
| Day 19 | 1,200     | 1,200      |
| Day 20 | 1,200     | 1,200      |
| Day 21 | 1,200     | 1,200      |
| Day 22 | 1,200     | 1,200      |
| Day 23 | 1,200     | 1,200      |
| Day 24 | 1,200     | 1,200      |
| Day 25 | 1,200     | 1,200      |
| Day 26 | 1,200     | 1,200      |
| Day 27 | 1,200     | 1,200      |
| Day 28 | 1,200     | 1,200      |
| Day 29 | 1,200     | 1,200      |
| Day 30 | 1,200     | 1,200      |
| Day 31 | 1,200     | 1,200      |
| Day 32 | 1,200     | 1,200      |
| Day 33 | 1,200     | 1,200      |
| Day 34 | 1,200     | 1,200      |
| Day 35 | 1,200     | 1,200      |
| Day 36 | 1,200     | 1,200      |
| Day 37 | 1,200     | 1,200      |
| Day 38 | 1,200     | 1,200      |
| Day 39 | 1,200     | 1,200      |
| Day 40 | 1,200     | 1,200      |
| Day 41 | 1,200     | 1,200      |
| Day 42 | 1,200     | 1,200      |
| Day 43 | 1,200     | 1,200      |
| Day 44 | 1,200     | 1,200      |
| Day 45 | 1,200     | 1,200      |
| Day 46 | 1,200     | 1,200      |
| Day 47 | 1,200     | 1,200      |
| Day 48 | 1,200     | 1,200      |
| Day 49 | 1,200     | 1,200      |
| Day 50 | 1,200     | 1,200      |
| Day 51 | 1,200     | 1,200      |
| Day 52 | 1,200     | 1,200      |
| Day 53 | 1,200     | 1,200      |
| Day 54 | 1,200     | 1,200      |
| Day 55 | 1,200     | 1,200      |
| Day 56 | 1,200     | 1,200      |
| Day 57 | 1,200     | 1,200      |
| Day 58 | 1,200     | 1,200      |
| Day 59 | 1,200     | 1,200      |
| Day 60 | 1,200     | 1,200      |
| Day 61 | 1,200     | 1,200      |
| Day 62 | 1,200     | 1,200      |
| Day 63 | 1,200     | 1,200      |
| Day 64 | 1,200     | 1,200      |
| Day 65 | 1,200     | 1,200      |
| Day 66 | 1,200     | 1,200      |
| Day 67 | 1,200     | 1,200      |
| Day 68 | 1,200     | 1,200      |
| Day 69 | 1,200     | 1,200      |
| Day 70 | 1,200     | 1,200      |
| Day 71 | 1,200     | 1,200      |
| Day 72 | 1,200     | 1,200      |
| Day 73 | 1,200     | 1,200      |
| Day 74 | 1,200     | 1,200      |
| Day 75 | 1,200     | 1,200      |
| Day 76 | 1,200     | 1,200      |
| Day 77 | 1,200     | 1,200      |
| Day 78 | 1,200     | 1,200      |
| Day 79 | 1,200     | 1,200      |
| Day 80 | 1,200     | 1,200      |
| Day 81 | 1,200     | 1,200      |
| Day 82 | 1,200     | 1,200      |
| Day 83 | 1,200     | 1,200      |
| Day 84 | 1,200     | 1,200      |
| Day 85 | 1,200     | 1,200      |
| Day 86 | 1,200     | 1,200      |
| Day 87 | 1,200     | 1,200      |
| Day 88 | 1,200     | 1,200      |
| Day 89 | 1,200     | 1,200      |

## COVID-19 Health Screening

Welcome to the Health Department's COVID-19 health screening registration form for the Bermuda Government Molecular Diagnostic Testing Laboratory at the old White's Supermarket at Southside. Please choose and register for a timeslot that suits you for your screening. Please ensure to bring your confirmation number with you for your screening. Instructions: Please remain in your car or on your bike, with a mask on and your windows up until directed. Your results will be communicated to you by your doctor.

[Check Availability](#)

Printer-friendly version

## Contact Information

Ministry of Health

Department of Health Headquarters

## Physical Address

Continental Building  
25 Church Street  
Hamilton HM 12  
Bermuda

(441) 278-4900

[Send us an email](#)

### Mailing Address

P.O. Box HM 380

## You might be interested in

---


[Guidelines for radioactive equipment](#)

[Health programmes in Bermuda](#)

[The Zika Virus](#)

# GETTING BITTEN BY MOSQUITOES?

Tip any standing water and call  
Vector Control at 278 5397.

 GOVERNMENT OF BERMUDA  
Ministry of Health and Seniors  
Department of Health



For general enquiries, [contact us](#)  
T. (441) 295-5151