



GOVERNMENT OF
BERMUDA

What are you looking for?



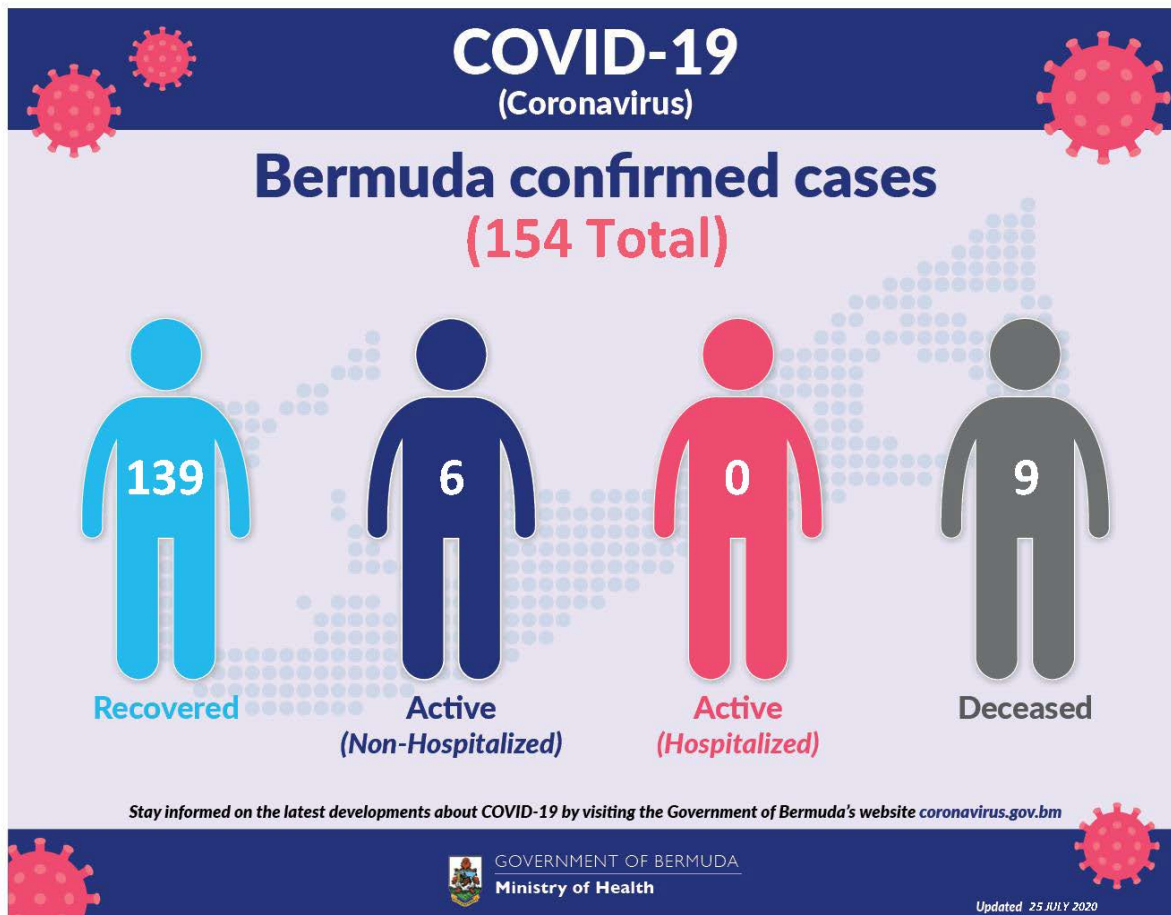
[Click here for Coronavirus \(COVID-19\) Information and Updates](#) | [Check on your health today, visit HealthIQ](#) | [Apply for the Bermuda Travel Authorisation](#)

Coronavirus (COVID-19) update

The current World Health Organization risk assessment for novel coronavirus (COVID-19) is very high risk globally. It is advised that all countries prepare for the possibility of COVID-19 in their communities. Everyone has a role to play in getting ready and staying healthy by practicing everyday prevention measures like frequent hand washing, staying home when sick and covering coughs and sneezes. The World Health Organization has declared the current coronavirus situation as a pandemic. A pandemic is the increased and sustained transmission of a disease across many countries.

Surveillance for respiratory illness has been enhanced in collaboration with local public health partners. Persons with respiratory illness including fever and cough should call ahead and inform their health care provider of their travel history prior to attending for medical care.

This is a rapidly changing situation. Please regularly check this page for updates.



Data as of 3:00 pm 25 July 2020

COVID-19 Testing	Total
Total	19604
Results negative	19450
Results positive	154
Transmission Status of Confirmed Cases	
Imported	50
Local Transmission [Known contact/source]	85
Local Transmission [Unknown contact/source]	19
Under Investigation	0
Status of Confirmed Cases	
Recovered	139
Active (non-hospitalized)	6

Active (hospitalized)	0
Deceased	9

Imported: Cases acquired outside of Bermuda.

Local transmission: Cases acquired within Bermuda

Under investigation: Type of transmission has not yet been determined. These cases are not imported and are likely the result of local transmission.

Recovered: Person has had no fever for at least 72 hours (3 days) without the use of fever-reducing medication, other symptoms have improved and at least 14 days have passed since onset of symptoms or testing date. Laboratory confirmation of at least one negative result may also be used as evidence of recovery.

Country status: Sporadic Cases

COVID-19 Reopening Indicators

Bermuda is monitoring critical indicators to see how we are doing in managing COVID-19 and assess our readiness to move to the next phase of our reopening plan. These indicators are updated on Mondays and Thursday.

As of 23rd July 2020:

Lead Measures

As of 23rd July 2020

"How Bermuda is doing; monitor bi-weekly to indicate likelihood of movement to the next phase"

Preventive Behaviours



Face mask wearing	
HealthIQ Reports on observation of mask wearing	
Physical Distancing	
HealthIQ Reports on observation of 3 – 6ft physical distancing	
Adoption of technology	
Number of people participating in Health IQ / other apps	

Capacity



Testing capacity	
In stock of all lab consumables, reagents and kits plus enabling resources: staff & PPE	
PPE supplies	
In stock of: surgical mask, N95 mask, gloves, gowns and face shields	

Lag Measures

"How Bermuda has done so far; to confirm at the end of each phase that it is safe to move to the next phase"

Transmission



WHO country classification	
WHO country classification	
Transmission	
Proportion of cases able to be linked to known cases or clusters	
Reproduction rate	
Real time reproduction number (average over last 7 days)	

Cases and hospitalizations



Hospitalizations	
New COVID-related hospitalizations	
Critical care	
New COVID cases in critical care	
COVID-19 cases	
Number of new cases	

Definitions

Lag measures:

6. Classification: WHO Country classification

- Green: Sporadic cases
- Amber: Local transmission
- Red: Community transmission

7. Transmission: Proportion of cases able to be linked to known cases or clusters

- <10% unknown transmission
- >20% unknown transmission

8. Reproduction rate: Real time reproduction number average over last 7 days

- $R_t < 1.0$
- $R_t > 1.4$

9. Hospitalizations: New COVID-related hospitalizations

- <7 over last 7 days
- >21 over last 7 days

10. Critical care: COVID-related ICU cases

- <4 concurrent per week
- >7 concurrent per week

- <12 over last 7 days
- >35 over last 7 days

The numbers generated through this model cannot be interpreted as predictions of what will occur during the current COVID-19 pandemic. Rather, they should be treated as estimates of what might happen, based on the assumptions used in generating these estimates and the modelling strategy used. The model aims to provide decision makers with potentially useful but heavily caveated information that will be refined as more information becomes available. The point of the model is not to predict the future, it's to influence it, help us prepare for it and choose a good course of action.

SUMMARY FOR MODELLING FOR BERMUDA

The numbers generated through this model cannot be interpreted as predictions of what will occur during the current COVID-19 pandemic. Rather, they provide insight into the assumptions used in generating these estimates and the modelling strategy used. The model aims to provide decision makers with the ability to understand the impact of different assumptions on the model, as more information becomes available. The point of the model was to provide the Public Health Services with a help in preparing for what might occur as a result of the current COVID-19 pandemic.

The comparison of the impact of COVID-19 at World Case Scenario has been presented in the table below. The table shows the impact of the model on the number of cases, deaths and recoveries in the period from 1st January to 31st September.

Scenario	World Case	Better Case
Confirmed Cases	20,000	17,000
Deaths	1,000	800
Recoveries	19,000	16,200
Unconfirmed Cases	800	500
Deaths	100	50
Recoveries	700	450

It is important to not get fixated on the exact numbers on the timing of the peak as this can change based on the local situation and intervention and modelling is going to be very helpful for that purpose.

There are several model results that have been generated through this model. It is important to note that the model results are based on the assumption that the model is a good representation of the current situation and that the model is a good representation of the current situation.

The World Case Scenario is a scenario based on the assumption that the model is a good representation of the current situation and that the model is a good representation of the current situation.

The Better Case Scenario is a scenario based on the assumption that the model is a good representation of the current situation and that the model is a good representation of the current situation.

The model results are based on the assumption that the model is a good representation of the current situation and that the model is a good representation of the current situation.

COVID-19 (Coronavirus)

Bermuda Modelling: Infections per day

Estimated data from the graph:

Month	Confirmed	Unconfirmed	Total
Jan	100	50	150
Feb	200	100	300
Mar	500	200	700
Apr	1,500	500	2,000
May	2,000	500	2,500
Jun	1,000	200	1,200
Jul	500	100	600
Aug	200	50	250
Sep	500	100	600

The Better Case Scenario is a scenario based on the assumption that the model is a good representation of the current situation and that the model is a good representation of the current situation.

The model results are based on the assumption that the model is a good representation of the current situation and that the model is a good representation of the current situation.

The model results are based on the assumption that the model is a good representation of the current situation and that the model is a good representation of the current situation.

The model results are based on the assumption that the model is a good representation of the current situation and that the model is a good representation of the current situation.

The model results are based on the assumption that the model is a good representation of the current situation and that the model is a good representation of the current situation.

The model results are based on the assumption that the model is a good representation of the current situation and that the model is a good representation of the current situation.

The model results are based on the assumption that the model is a good representation of the current situation and that the model is a good representation of the current situation.

The model results are based on the assumption that the model is a good representation of the current situation and that the model is a good representation of the current situation.

The model results are based on the assumption that the model is a good representation of the current situation and that the model is a good representation of the current situation.

The model results are based on the assumption that the model is a good representation of the current situation and that the model is a good representation of the current situation.

COVID-19 (Coronavirus)

Estimated data from the graph:

Month	Confirmed	Unconfirmed	Total
Jan	100	50	150
Feb	200	100	300
Mar	500	200	700
Apr	1,500	500	2,000
May	2,000	500	2,500
Jun	1,000	200	1,200
Jul	500	100	600
Aug	200	50	250
Sep	500	100	600

COVID-19 Health Screening

Welcome to the Health Department's COVID-19 health screening registration form for the Bermuda Government Molecular Diagnostic Testing Laboratory at the old White's Supermarket at Southside. Please choose and register for a timeslot that suits you for your screening. Please ensure to bring your confirmation number with you for your screening. Instructions: Please remain in your car or on your bike, with a mask on and your windows up until directed. Your results will be communicated to you by your doctor.

[Check Availability](#)

[Printer-friendly version](#)

Contact Information

Ministry of [Health](#)

Department of [Health Headquarters](#)

Physical Address

Continental Building
25 Church Street
Hamilton HM 12
Bermuda

(441) 278-4900

[Send us an email](#)

Mailing Address

P.O. Box HM 380
Hamilton HM BX
Bermuda



Strategy for
Sustainable Water
& Wastewater Servicing
St. Georges Parish - Bermuda



GOVERNMENT OF BERMUDA

[Learn More](#)



For general enquiries, [contact us](#)
T. (441) 295-5151

[PATI](#) | [Privacy](#) | [Departments and Ministries](#)
© 2020 Government of Bermuda
