



GOVERNMENT OF
BERMUDA

What are you looking for?



[Click here for Coronavirus \(COVID-19\) Information and Updates](#)

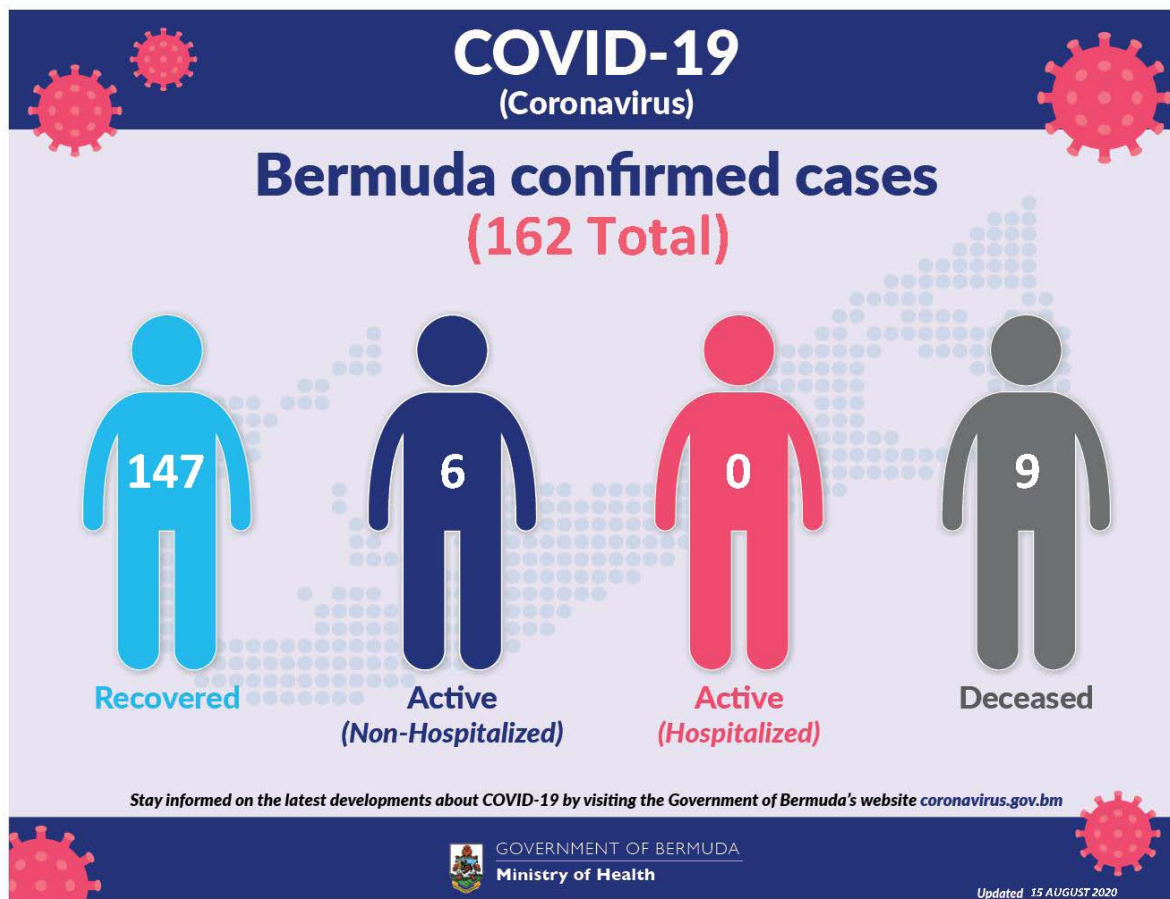
[Apply for Work From Bermuda One Year Residential Certificate](#) | [Apply for the Bermuda Travel Authorisation](#)

Coronavirus (COVID-19) update

The current World Health Organization risk assessment for novel coronavirus (COVID-19) is very high risk globally. It is advised that all countries prepare for the possibility of COVID-19 in their communities. Everyone has a role to play in getting ready and staying healthy by practicing everyday prevention measures like frequent hand washing, staying home when sick and covering coughs and sneezes. The World Health Organization has declared the current coronavirus situation as a pandemic. A pandemic is the increased and sustained transmission of a disease across many countries.

Surveillance for respiratory illness has been enhanced in collaboration with local public health partners. Persons with respiratory illness including fever and cough should call ahead and inform their health care provider of their travel history prior to attending for medical care.

This is a rapidly changing situation. Please regularly check this page for updates.



Data as of 5:00 pm 15 August 2020

| COVID-19 Testing | Total |
|---|-------|
| Total | 32415 |
| Results negative | 32253 |
| Results positive | 162 |
| Transmission Status of Confirmed Cases | |
| Imported | 58 |
| Local Transmission [Known contact/source] | 85 |
| Local Transmission [Unknown contact/source] | 19 |
| Under Investigation | 0 |
| Status of Confirmed Cases | |
| Recovered | 147 |
| Active (non-hospitalized) | 6 |

| | |
|-----------------------|---|
| Active (hospitalized) | 0 |
| Deceased | 9 |

Imported: Cases acquired outside of Bermuda.

Local transmission: Cases acquired within Bermuda

Under investigation: Type of transmission has not yet been determined. These cases are not imported and are likely the result of local transmission.

Recovered: Person has had no fever for at least 72 hours (3 days) without the use of fever-reducing medication, other symptoms have improved and at least 14 days have passed since onset of symptoms or testing date. Laboratory confirmation of at least one negative result may also be used as evidence of recovery.

Country status: Sporadic Cases

COVID-19 Reopening Indicators

Bermuda is monitoring critical indicators to see how we are doing in managing COVID-19 and assess our readiness to move to the next phase of our reopening plan. These indicators are updated on Mondays and Thursday.

Lead Measures

As of 13th August 2020

"How Bermuda is doing; monitor bi-weekly to indicate likelihood of movement to the next phase"

Preventive Behaviours



| | |
|--|--|
| Face mask wearing | |
| HealthIQ Reports on observation of mask wearing | |
| Physical Distancing | |
| HealthIQ Reports on observation of 3 – 6ft physical distancing | |
| Adoption of technology | |
| Number of people participating in Health IQ / other apps | |

Capacity



| | |
|---|--|
| Testing capacity | |
| In stock of all lab consumables, reagents and kits plus enabling resources: staff & PPE | |
| PPE supplies | |
| In stock of: surgical mask, N95 mask, gloves, gowns and face shields | |

Lag Measures

"How Bermuda has done so far; to confirm at the end of each phase that it is safe to move to the next phase"

Transmission



| | |
|--|--|
| WHO country classification | |
| WHO country classification | |
| Transmission | |
| Proportion of cases able to be linked to known cases or clusters | |
| Reproduction rate | |
| Real time reproduction number (average over last 7 days) | |

Cases and hospitalizations



| | |
|------------------------------------|--|
| Hospitalizations | |
| New COVID-related hospitalizations | |
| Critical care | |
| New COVID cases in critical care | |
| COVID-19 cases | |
| Number of new cases | |

Definitions

Lead measures:

1. Face mask wearing: HealthIQ Reports on observation of mask wearing –

- >95% report public wearing masks
- <80% report public wearing masks

2. Physical distancing: HealthIQ Reports on observation of 3 – 6ft physical distancing -

- >95% report public maintaining distance
- <80% report public maintaining distance

3. Adoption of Technology: Number of people participating in HealthIQ or Apps (public) -

- >10,000 unique respondents (All time)
- <5,000 unique respondents

4. Testing capacity: In stock of all lab consumables, reagents and kits plus enabling resources: staff & PPE

- >3 months' supply
- <1 months' supply

5. PPE supplies (critical): In stock of: surgical mask, N95 mask, gloves, gowns and face shields

- >5 months' supply
- >3 months' supply

Lag measures:

6. Classification: WHO Country classification

- Green: Sporadic cases
- Amber: Local transmission
- Red: Community transmission

7. Transmission: Proportion of cases able to be linked to known cases or clusters

- <10% unknown transmission
- >20% unknown transmission

8. Reproduction rate: Real time reproduction number average over last 7 days

- Rt <1.0
- Rt >1.4

9. Hospitalizations: New COVID-related hospitalizations

- <7 over last 7 days
- >21 over last 7 days

10. Critical care: COVID-related ICU cases

- <4 concurrent per week
- >7 concurrent per week

11. COVID-19 cases: Number of new cases per week

- <12 over last 7 days
- >35 over last 7 days

COVID-19 Dashboard 13 August, 2020 

COVID-SIM

COVID-SIM is a planning tool for those who are concerned about the spread of the new coronavirus SARS-CoV-2 which causes the disease called COVID-19. It is NOT a tool to predict the exact course of the pandemic within a country.

[Printer-friendly version](#)

Contact Information

Ministry of [Health](#)

Department of [Health Headquarters](#)

Physical Address

Continental Building
25 Church Street
Hamilton HM 12
Bermuda

(441) 278-4900

[Send us an email](#)

Mailing Address

P.O. Box HM 380
Hamilton HM BX
Bermuda

You might be interested in

[Guidelines for radioactive equipment](#)

[Health programmes in Bermuda](#)

[The Zika Virus](#)



Fighting global financial
crime is your concern

Learn why the anti-money
laundering campaign is just
GOOD BUSINESS

www.goodbusiness.bm



GOVERNMENT OF BERMUDA
Ministry of Finance



For general enquiries, [contact us](#)
T. (441) 295-5151

[PATI](#) | [Privacy](#) | [Departments and Ministries](#)

© 2020 Government of Bermuda