



GOVERNMENT OF
BERMUDA

What are you looking for?



[Click here for Coronavirus \(COVID-19\) Information and Updates](#)

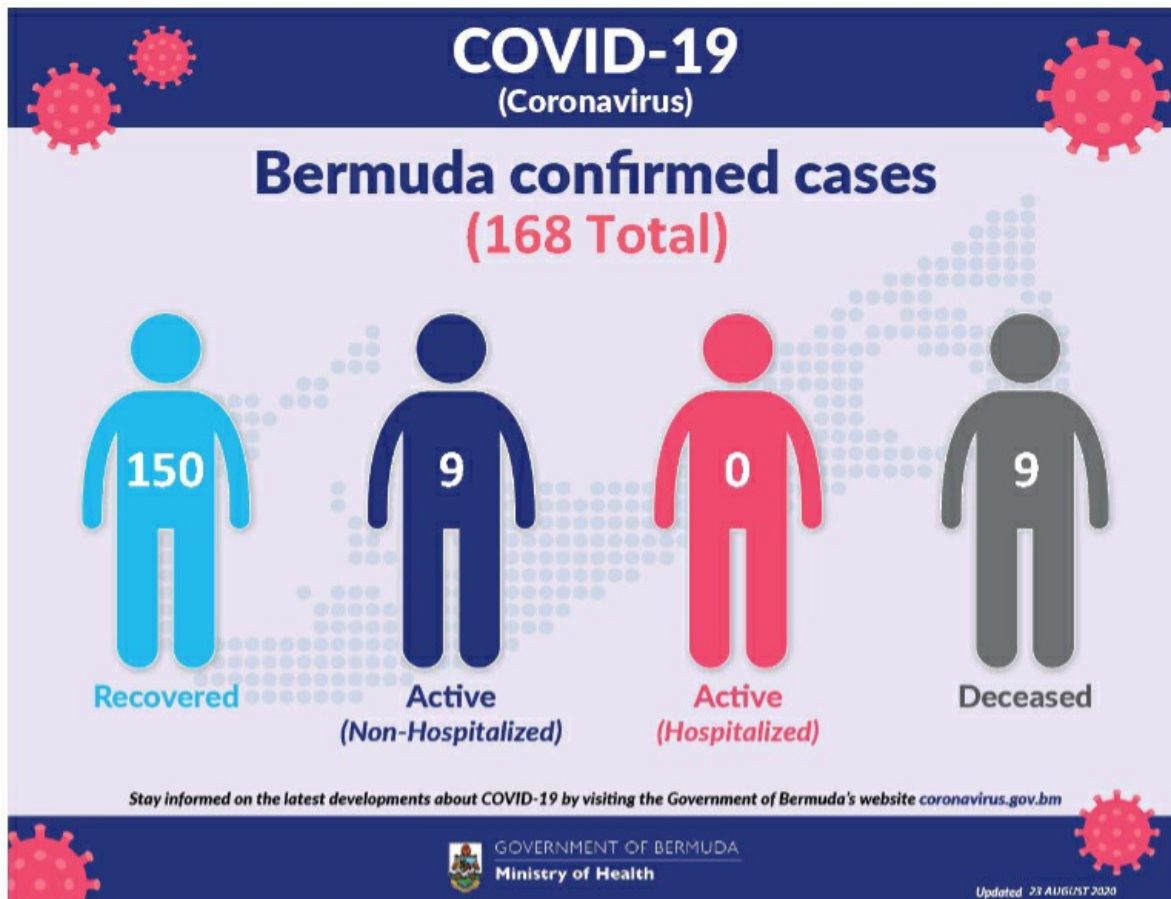
[Apply for Work From Bermuda One Year Residential Certificate](#) | [Apply for the Bermuda Travel Authorisation](#)

Coronavirus (COVID-19) update

The current World Health Organization risk assessment for novel coronavirus (COVID-19) is very high risk globally. It is advised that all countries prepare for the possibility of COVID-19 in their communities. Everyone has a role to play in getting ready and staying healthy by practicing everyday prevention measures like frequent hand washing, staying home when sick and covering coughs and sneezes. The World Health Organization has declared the current coronavirus situation as a pandemic. A pandemic is the increased and sustained transmission of a disease across many countries.

Surveillance for respiratory illness has been enhanced in collaboration with local public health partners. Persons with respiratory illness including fever and cough should call ahead and inform their health care provider of their travel history prior to attending for medical care.

This is a rapidly changing situation. Please regularly check this page for updates.



Data as of 4:00 pm 24 August 2020

COVID-19 Testing	Total
Total	39372
Results negative	39204
Results positive	168
Transmission Status of Confirmed Cases	
Imported	61
Local Transmission [Known contact/source]	86
Local Transmission [Unknown contact/source]	19
Under Investigation	2
Status of Confirmed Cases	
Recovered	150
Active (non-hospitalized)	9
Active (hospitalized)	0

Imported: Cases acquired outside of Bermuda.

Local transmission: Cases acquired within Bermuda

Under investigation: Type of transmission has not yet been determined. These cases are not imported and are likely the result of local transmission.

Recovered: Person has had no fever for at least 72 hours (3 days) without the use of fever-reducing medication, other symptoms have improved and at least 14 days have passed since onset of symptoms or testing date. Laboratory confirmation of at least one negative result may also be used as evidence of recovery.

Country status: Sporadic Cases

COVID-19 Reopening Indicators

Bermuda is monitoring critical indicators to see how we are doing in managing COVID-19 and assess our readiness to move to the next phase of our reopening plan. These indicators are updated on Mondays and Thursday.

Lead Measures

As of 24th August 2020

"How Bermuda is doing; monitor bi-weekly to indicate likelihood of movement to the next phase"

Preventive Behaviours



Face mask wearing	
HealthIQ Reports on observation of mask wearing	
Physical Distancing	
HealthIQ Reports on observation of 3 – 6ft physical distancing	
Adoption of technology	
Number of people participating in Health IQ/ other apps	

Capacity



Testing capacity	
In stock of all lab consumables, reagents and kits plus enabling resources: staff & PPE	
PPE supplies	
In stock of: surgical mask, N95 mask, gloves, gowns and face shields	

Lag Measures

"How Bermuda has done so far; to confirm at the end of each phase that it is safe to move to the next phase"

Transmission



WHO country classification	
WHO country classification	
Transmission	
Proportion of cases able to be linked to known cases or clusters	
Reproduction rate	
Real time reproduction number (average over last 7 days)	

Cases and hospitalizations



Hospitalizations	
New COVID-related hospitalizations	
Critical care	
New COVID cases in critical care	
COVID-19 cases	
Number of new cases	

Definitions

Lead measures:

1. Face mask wearing: HealthIQ Reports on observation of mask wearing –

- >95% report public wearing masks
- <80% report public wearing masks

2. Physical distancing: HealthIQ Reports on observation of 3 – 6ft physical distancing -

- >95% report public maintaining distance
- <80% report public maintaining distance

3. Adoption of Technology: Number of people participating in HealthIQ or Apps (public) -

- >10,000 unique respondents (All time)
- <5,000 unique respondents

4. Testing capacity: In stock of all lab consumables, reagents and kits plus enabling resources: staff & PPE

- >3 months' supply
- <1 months' supply

5. PPE supplies (critical): In stock of: surgical mask, N95 mask, gloves, gowns and face shields

- >5 months' supply
- >3 months' supply

Lag measures:

6. Classification: WHO Country classification

- Green: Sporadic cases
- Amber: Local transmission
- Red: Community transmission

7. Transmission: Proportion of cases able to be linked to known cases or clusters

- <10% unknown transmission
- >20% unknown transmission

8. Reproduction rate: Real time reproduction number average over last 7 days

- $R_t < 1.0$
- $R_t > 1.4$

9. Hospitalizations: New COVID-related hospitalizations

- <7 over last 7 days
- >21 over last 7 days

10. Critical care: COVID-related ICU cases

- <4 concurrent per week
- >7 concurrent per week

11. COVID-19 cases: Number of new cases per week

- <12 over last 7 days
- >35 over last 7 days

Modelling Parameters 13 August, 2020

COVID-SIM

COVID-SIM is a planning tool for those who are concerned about the spread of the new coronavirus SARS-CoV-2 which causes the disease called COVID-19. It is NOT a tool to predict the exact course of the pandemic within a country.

[Printer-friendly version](#)

Contact Information

Ministry of [Health](#)

Department of [Health Headquarters](#)

Physical Address

Continental Building
25 Church Street
Hamilton HM 12
Bermuda
(441) 278-4900

[Send us an email](#)

Mailing Address

P.O. Box HM 380
Hamilton HM BX
Bermuda

You might be interested in

[Guidelines for radioactive equipment](#)

[Health programmes in Bermuda](#)

[The Zika Virus](#)



Strategy for
Sustainable Water
& Wastewater Servicing
St. Georges Parish - Bermuda



GOVERNMENT OF BERMUDA

[Learn More](#)



For general enquiries, [contact us](#)
T. (441) 295-5151