



GOVERNMENT OF  
BERMUDA

What are you looking for?



[Coronavirus \(COVID-19\) - Latest updates, precautionary measures, and travel advice](#) | [COVID-19 Vaccine Registration](#)

[Apply for the Bermuda Travel Authorisation](#) | [WeHealth Bermuda app](#) | [Get Tested for COVID-19](#)

## Coronavirus (COVID-19) update

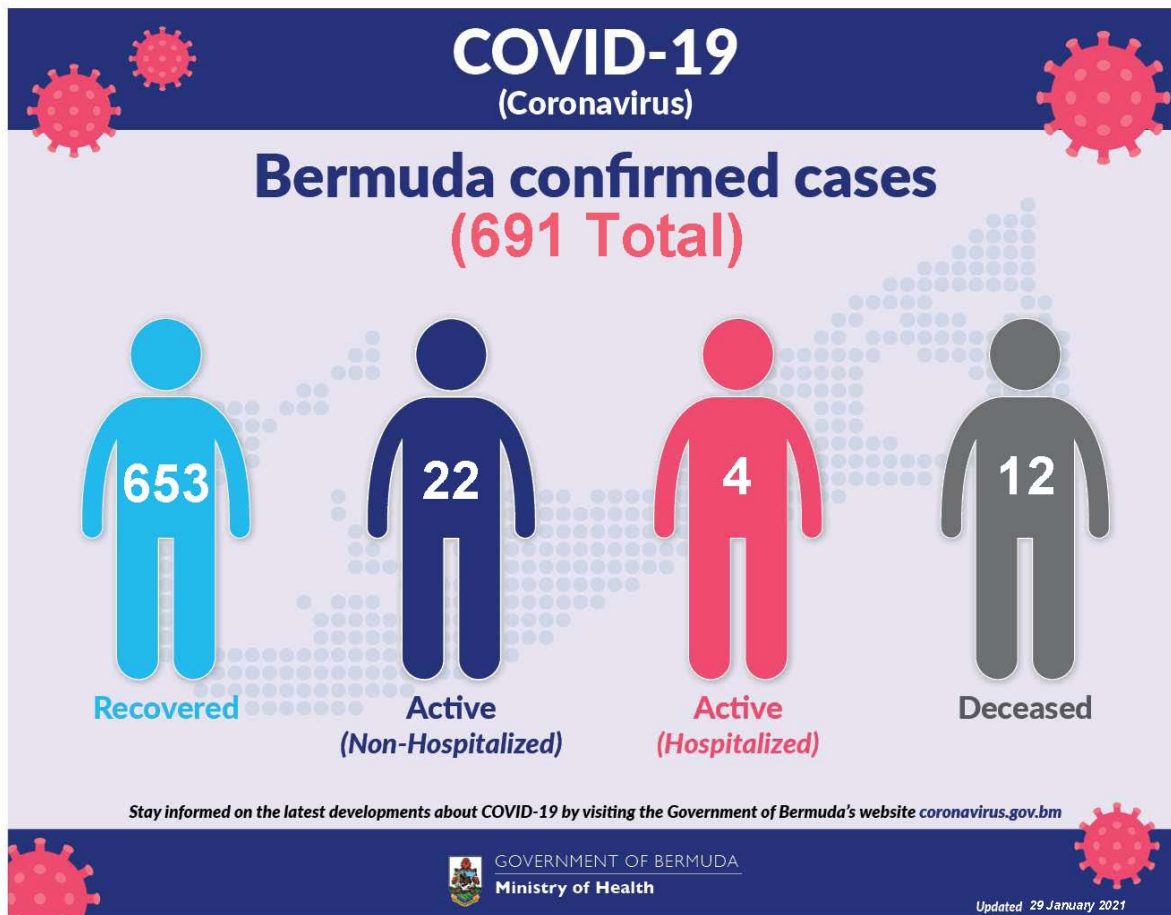
The current World Health Organization risk assessment for novel coronavirus (COVID-19) is very high risk globally. It is advised that all countries prepare for the possibility of COVID-19 in their communities. Everyone has a role to play in getting ready and staying healthy by practicing everyday prevention measures like frequent hand washing, staying home when sick and covering coughs and sneezes. The World Health Organization has declared the current coronavirus situation as a pandemic. A pandemic is the increased and sustained transmission of a disease across many countries.

Surveillance for respiratory illness has been enhanced in collaboration with local public health partners. Persons with respiratory illness including fever and cough should call ahead and inform their health care provider of their travel history prior to attending for medical care.

This is a rapidly changing situation. Please regularly check this page for updates.

[COVID-19 Dashboard 29 January 2021](#) 

You can view our interactive COVID dashboard [here](#).



Data as of 29th January 2021

COVID-19 Testing	Total
Total	162959
Results negative	162268
Results positive	691
<b>Transmission Status of Confirmed Cases</b>	
Imported	199
Local Transmission [Known contact/source]	398
Local Transmission [Unknown contact/source]	87
Under Investigation	7
<b>Status of Confirmed Cases</b>	
Recovered	653
Active (non-hospitalized)	22

Active (hospitalized)	4
Deceased	12

**Imported:** Cases acquired outside of Bermuda.

**Local transmission:** Cases acquired within Bermuda

**Under investigation:** Type of transmission has not yet been determined. These cases are not imported and are likely the result of local transmission.

**Recovered:** Case has had no fever for at least 72 hours (3 days) without the use of fever-reducing medication, other symptoms have improved, at least 14 days have passed since onset of symptoms or testing date and there is laboratory confirmation of at least one negative result.

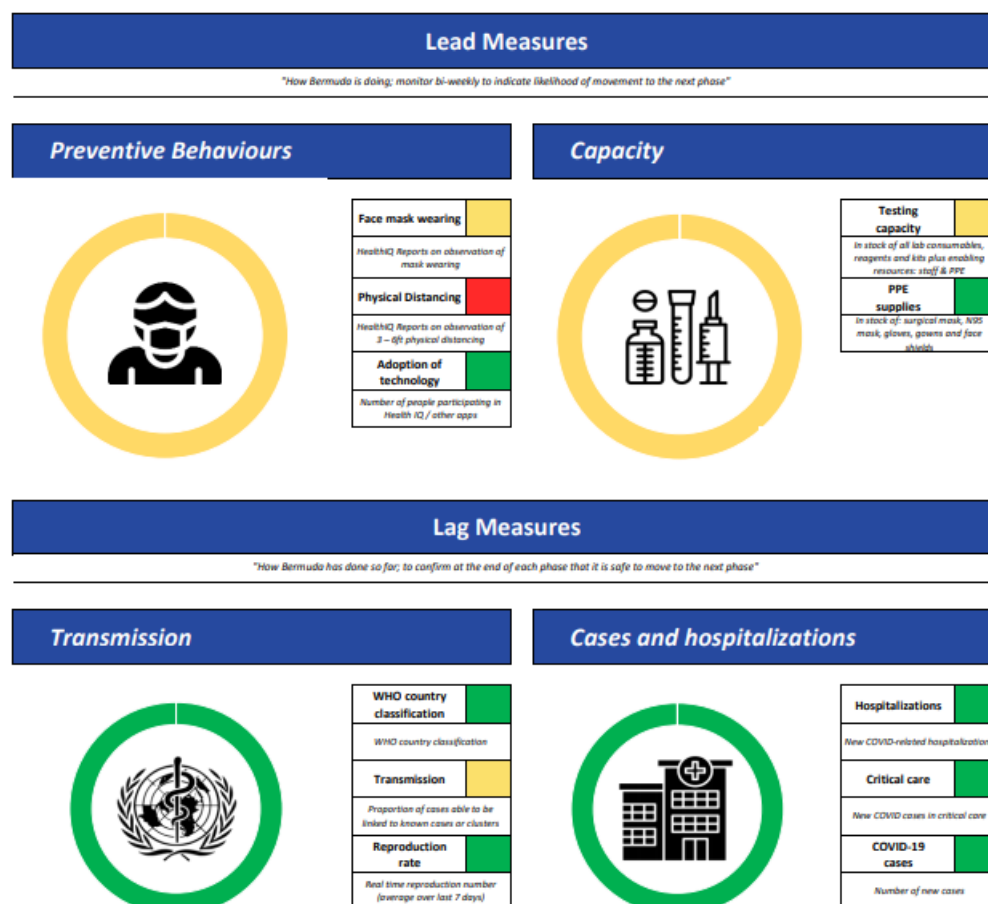
**Deceased:** Case has died without a clear alternative cause of death that cannot be related to COVID disease (e.g. trauma) with no period of complete recovery from COVID-19 between illness and death.

**Country status:** Clusters of cases

## COVID-19 Reopening Indicators

Bermuda is monitoring critical indicators to see how we are doing in managing COVID-19 and assess our readiness to move to the next phase of our reopening plan. These indicators are updated on Tuesdays.

As of 26th January 2021



## Definitions

### Lead measures:

**1. Face mask wearing:** HealthIQ Reports on observation of mask wearing –

- >95% report public wearing masks
- <80% report public wearing masks

**2. Physical distancing:** HealthIQ Reports on observation of 3 – 6ft physical distancing -

- >95% report public maintaining distance
- <80% report public maintaining distance

**3. Adoption of Technology:** Number of people participating in HealthIQ or Apps (public) -

- >10,000 unique respondents (All time)
- <5,000 unique respondents

**4. Testing capacity:** In stock of all lab consumables, reagents and kits plus enabling resources: staff & PPE

- >3 months' supply
- <1 months' supply

**5. PPE supplies (critical):** In stock of: surgical mask, N95 mask, gloves, gowns and face shields

- >5 months' supply
- >3 months' supply

### Lag measures:

**6. Classification: WHO Country classification**

- Green: Sporadic cases
- Amber: Local transmission
- Red: Community transmission

**7. Transmission:** Proportion of cases able to be linked to known cases or clusters

- <10% unknown transmission
- >20% unknown transmission

**8. Reproduction rate:** Real time reproduction number average over last 7 days

- $R_t < 1.0$
- $R_t > 1.4$

**9. Hospitalizations:** New COVID-related hospitalizations

- <7 over last 7 days
- >21 over last 7 days

**10. Critical care:** COVID-related ICU cases

- <4 concurrent per week
- >7 concurrent per week

**11. COVID-19 cases:** Number of new cases per week

- <12 over last 7 days
- >35 over last 7 days

## Modelling Parameters 13 August, 2020

### COVID-SIM

COVID-SIM is a planning tool for those who are concerned about the spread of the new coronavirus SARS-CoV-2 which causes the disease called COVID-19. It is NOT a tool to predict the exact course of the pandemic within a country.

[Printer-friendly version](#)

## Contact Information

Ministry of [Health](#)

Department of [Health Headquarters](#)

**Questions or concerns about COVID-19?**

(441) 444 2498

[Send us an email](#)

9am and 9pm

## You might be interested in

[Guidelines for radioactive equipment](#)

[Health programmes in Bermuda](#)

[The Zika Virus](#)



Strategy for  
**Sustainable Water**  
& Wastewater Servicing  
St. Georges Parish - Bermuda



GOVERNMENT OF BERMUDA

[Learn More](#)



For general enquiries, [contact us](#)

T. (441) 295-5151

[PATI](#) | [Privacy](#) | [Departments and Ministries](#)

© 2021 Government of Bermuda