



GOVERNMENT OF
BERMUDA

What are you looking for?



[Coronavirus \(COVID-19\) - Latest updates, precautionary measures, and travel advice](#) | [COVID-19 Vaccine Registration](#)

[Apply for the Bermuda Travel Authorisation](#) | [WeHealth Bermuda app](#) | [Get Tested for COVID-19](#)

Coronavirus (COVID-19) update

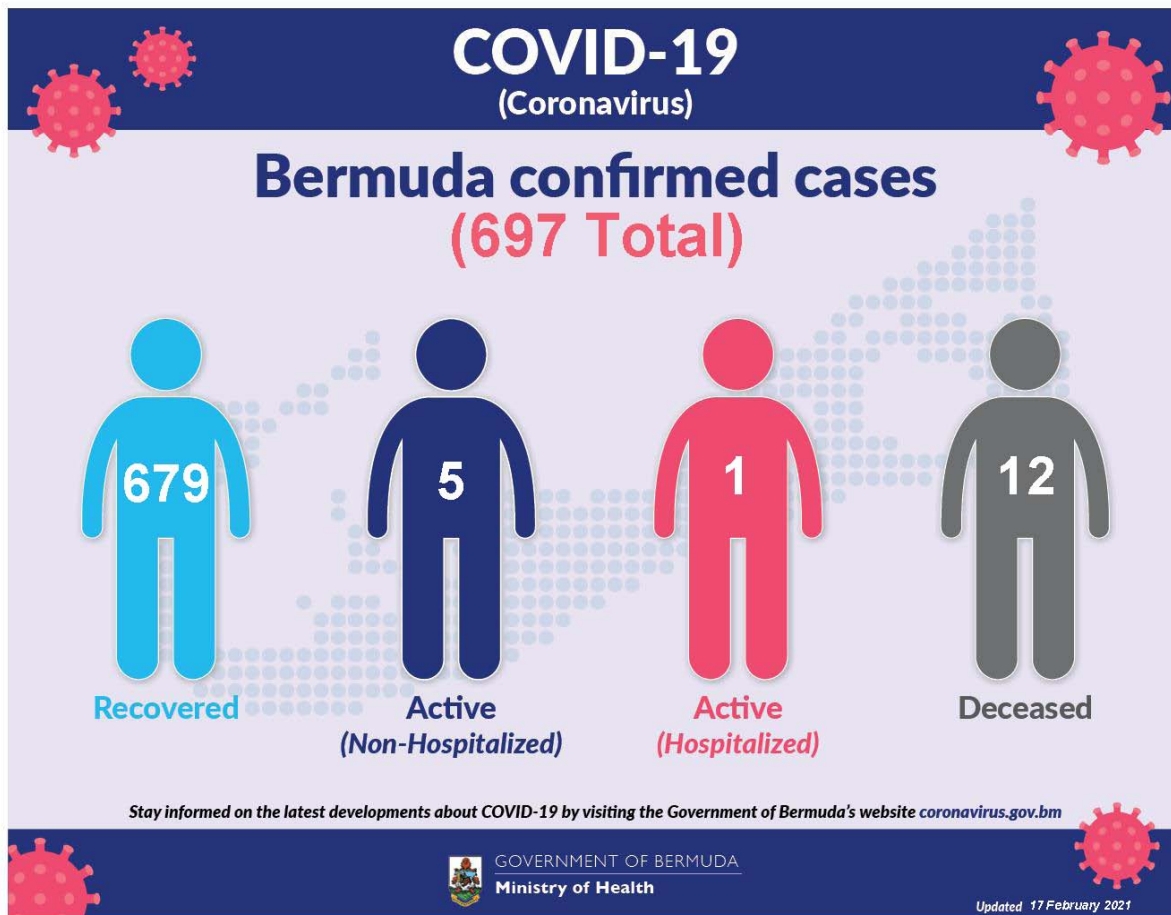
The current World Health Organization risk assessment for novel coronavirus (COVID-19) is very high risk globally. It is advised that all countries prepare for the possibility of COVID-19 in their communities. Everyone has a role to play in getting ready and staying healthy by practicing everyday prevention measures like frequent hand washing, staying home when sick and covering coughs and sneezes. The World Health Organization has declared the current coronavirus situation as a pandemic. A pandemic is the increased and sustained transmission of a disease across many countries.

Surveillance for respiratory illness has been enhanced in collaboration with local public health partners. Persons with respiratory illness including fever and cough should call ahead and inform their health care provider of their travel history prior to attending for medical care.

This is a rapidly changing situation. Please regularly check this page for updates.

[COVID-19 Dashboard 17 February 2021](#) 

You can view our interactive COVID dashboard [here](#).



Data as of 17th February 2021

COVID-19 Testing	Total
Total	171060
Results negative	170363
Results positive	697
Transmission Status of Confirmed Cases	
Imported	203
Local Transmission [Known contact/source]	402
Local Transmission [Unknown contact/source]	91
Under Investigation	1
Status of Confirmed Cases	
Recovered	679
Active (non-hospitalized)	5

Active (hospitalized)	1
Deceased	12

Imported: Cases acquired outside of Bermuda.

Local transmission: Cases acquired within Bermuda

Under investigation: Type of transmission has not yet been determined. These cases are not imported and are likely the result of local transmission.

Recovered: Case has had no fever for at least 72 hours (3 days) without the use of fever-reducing medication, other symptoms have improved, at least 14 days have passed since onset of symptoms or testing date and there is laboratory confirmation of at least one negative result.

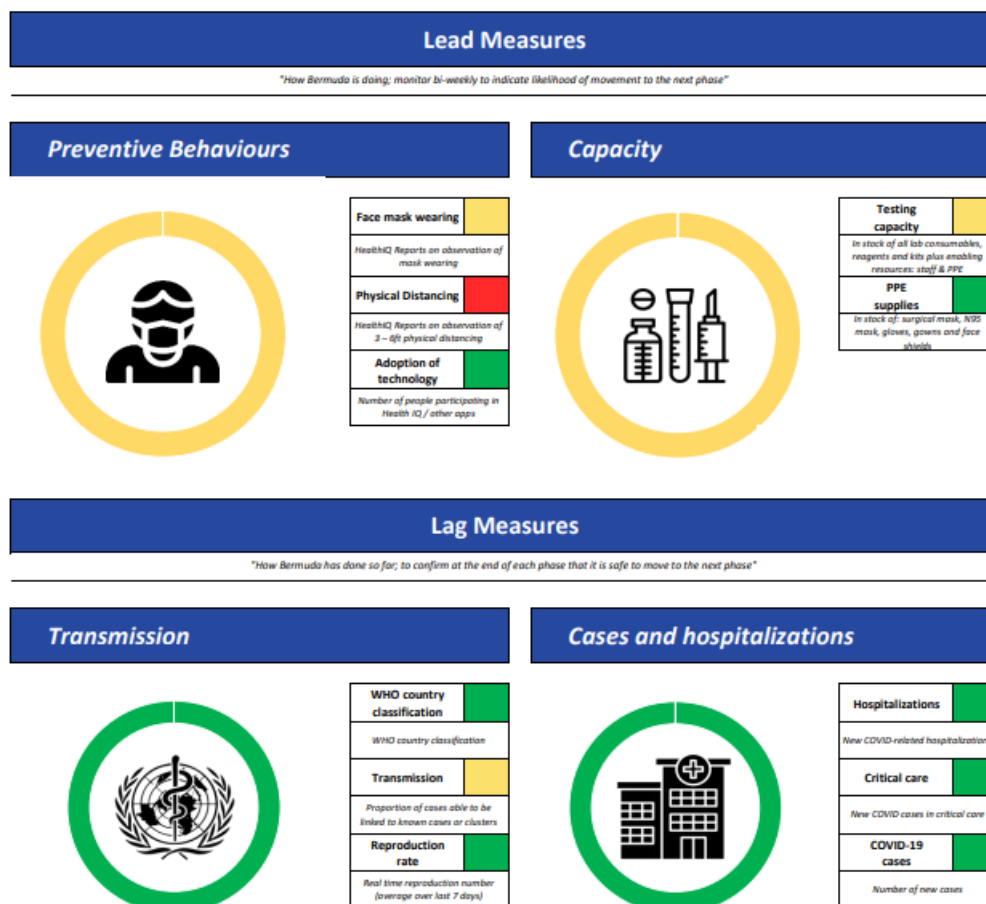
Deceased: Case has died without a clear alternative cause of death that cannot be related to COVID disease (e.g. trauma) with no period of complete recovery from COVID-19 between illness and death.

Country status: Sporadic cases

COVID-19 Reopening Indicators

Bermuda is monitoring critical indicators to see how we are doing in managing COVID-19 and assess our readiness to move to the next phase of our reopening plan. These indicators are updated on Tuesdays.

As of 16th February 2021



Definitions

Lead measures:

1. Face mask wearing: HealthIQ Reports on observation of mask wearing –

- >95% report public wearing masks
- <80% report public wearing masks

2. Physical distancing: HealthIQ Reports on observation of 3 – 6ft physical distancing –

- >95% report public maintaining distance
- <80% report public maintaining distance

3. Adoption of Technology: Number of people participating in HealthIQ or Apps (public) -

- >10,000 unique respondents (All time)
- <5,000 unique respondents

4. Testing capacity: In stock of all lab consumables, reagents and kits plus enabling resources: staff & PPE

- >3 months' supply
- <1 months' supply

5. PPE supplies (critical): In stock of: surgical mask, N95 mask, gloves, gowns and face shields

- >5 months' supply
- >3 months' supply

Lag measures:

6. Classification: WHO Country classification

- Green: Sporadic cases
- Amber: Local transmission
- Red: Community transmission

7. Transmission: Proportion of cases able to be linked to known cases or clusters

- <10% unknown transmission
- >20% unknown transmission

8. Reproduction rate: Real time reproduction number average over last 7 days

- Rt <1.0
- Rt >1.4

9. Hospitalizations: New COVID-related hospitalizations

- <7 over last 7 days
- >21 over last 7 days

10. Critical care: COVID-related ICU cases

- <4 concurrent per week
- >7 concurrent per week

11. COVID-19 cases: Number of new cases per week

- <12 over last 7 days
- >35 over last 7 days

Modelling Parameters 13 August, 2020

COVID-SIM

COVID-SIM is a planning tool for those who are concerned about the spread of the new coronavirus SARS-CoV-2 which causes the disease called COVID-19. It is NOT a tool to predict the exact course of the pandemic within a country.

[Printer-friendly version](#)[Archive this item](#)[Rewrite this item](#)

Contact Information

Ministry of [Health](#)

Department of [Health Headquarters](#)


Questions or concerns about COVID-19?

You might be interested in

[Guidelines for radioactive equipment](#)

[Health programmes in Bermuda](#)

[The Zika Virus](#)



BERMUDA GOVERNMENT
Ministry of Public Works
Department of Works and Engineering

Strategy for Sustainable Water and Wastewater Servicing in St. George's Parish

The Study

The Government of Bermuda, Ministry of Public Works, has initiated a study to formulate a strategy for sustainable water and wastewater servicing in St. George's Parish. The objectives of the project involve an information review of the current water supply and sewage systems in St. George's Parish, to establish appropriate policies in order to:


- Offer options for management of service delivery;
- Identify infrastructure investment required to deliver a sustainable service for the Plan Period (25 years); and
- Complete a financial analysis of the current and proposed service delivery systems.

The Process

The study will define existing constraints and capacities, consider and evaluate alternatives and identify preferred water and wastewater servicing alternatives. The methodology will follow a process similar to the master planning process of the Municipal Engineers Association of Ontario, Canada.

Public Information and Consultation

The government wishes to ensure that anyone with an interest in this study has an opportunity to be involved and to provide input. Opportunities to provide the public with information will be made available via Public Information Centers (PIC's) and Town Hall meetings as well as on the project website, found here: www.bermudawater.info. The government is urging St. George's businesses and residents to answer the short survey found at the listed site. If you have any suggestions for or comments on the study please send any email to the project website: stgeorgewwwplan@gov.bm.



"The provision of a robust and reliable water and wastewater service to all Islanders and visitors, in a way that will allow Bermuda to be recognized as a leader in sustainability."



For general enquiries, [contact us](#)

T. (441) 295-5151

[PATI](#) | [Privacy](#) | [Departments and Ministries](#)

© 2021 Government of Bermuda