

# BC COVID-19 Data

Here you will find the latest data on COVID-19 cases in British Columbia.

## COVID-19 Dashboard

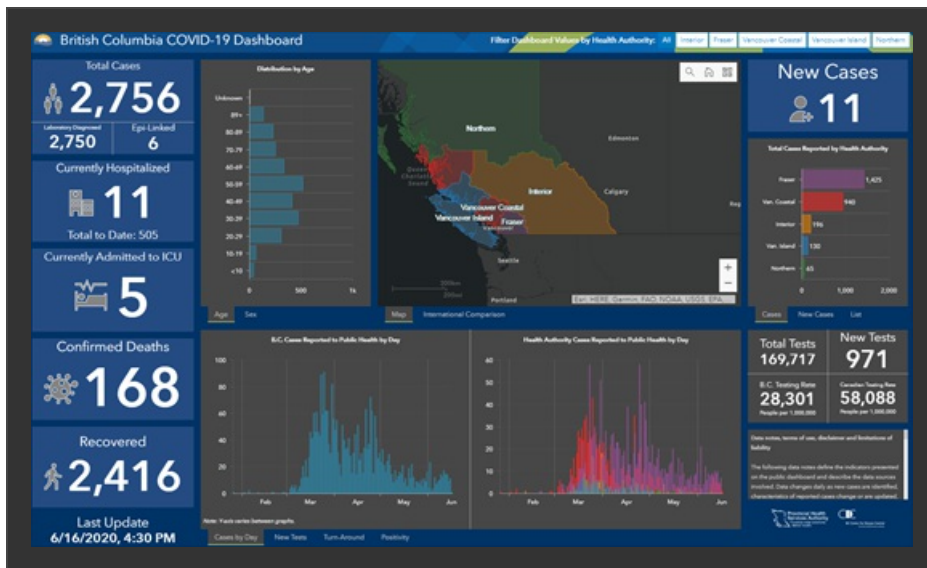
Click on the links or image below to access the BC COVID-19 dashboard for the latest case counts and information on recoveries, deaths, hospitalizations, testing and more:

- [BC COVID-19 Dashboard](#) (mobile and most browsers)
- [BC COVID-19 Dashboard for Internet Explorer users](#)

The dashboard is updated Monday to Friday at 5 p.m.

By accessing and using this dashboard, you agree to be bound by the [terms of use, disclaimer and limitation of liability](#).

**Update - As of June 4, 2020**, B.C. is reporting [epi-linked cases](#), meaning people who were never tested but were presumed to have COVID-19 because they developed symptoms and were close contacts of a laboratory confirmed case. Epi-linked cases identified since May 19, 2020, are now included in the case total, but are not considered new cases unless they were reported in the last 24 hours.



[Click image to visit the dashboard](#)

Organizations are welcome to link to or embed the dashboards on their websites.

## Download the data

Download CSV files of BC COVID-19 data

