

BC COVID-19 Data

Here you will find the latest data on COVID-19 cases in British Columbia.

COVID-19 Dashboard

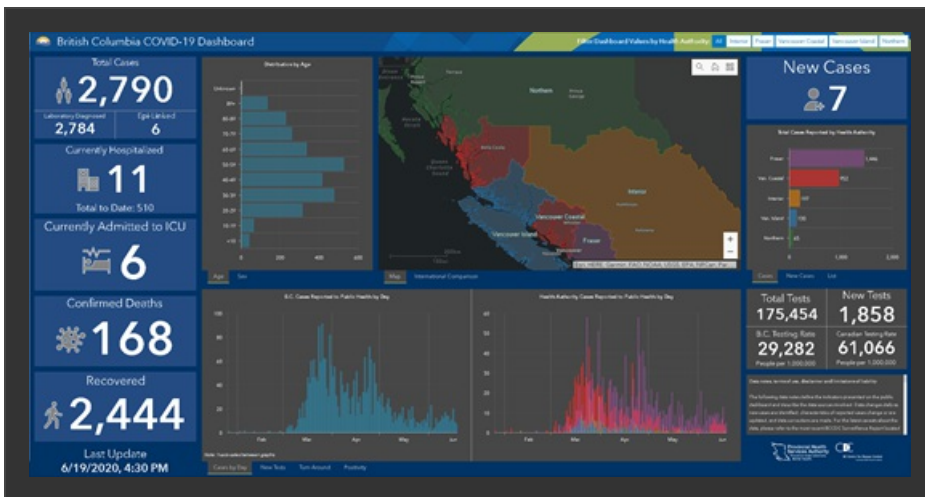
Click on the links or image below to access the BC COVID-19 dashboard for the latest case counts and information on recoveries, deaths, hospitalizations, testing and more:

- [BC COVID-19 Dashboard](#) (mobile and most browsers)
- [BC COVID-19 Dashboard for Internet Explorer users](#)

The dashboard is updated Monday to Friday at 5 p.m.

By accessing and using this dashboard, you agree to be bound by the [terms of use, disclaimer and limitation of liability](#).

Update - As of June 4, 2020, B.C. is reporting [epi-linked cases](#), meaning people who were never tested but were presumed to have COVID-19 because they developed symptoms and were close contacts of a laboratory confirmed case. Epi-linked cases identified since May 19, 2020, are now included in the case total, but are not considered new cases unless they were reported in the last 24 hours.



Click image to visit the dashboard

Organizations are welcome to link to or embed the dashboards on their websites.

Download the data

Download CSV files of BC COVID-19 data

Case data >

Laboratory data >

[Disclaimer and data notes](#); Contact: admininfo@bccdc.ca

If you are a GIS/Data Scientist looking to integrate dynamic data services into your own mapping/dashboard products please refer to the links below:

- [Case data \(spatial\)](#)
- [Case details](#)
- [Laboratory testing information](#)