



BC Centre for Disease Control

[42|43](#) [43|4F|56|49|44|2D|31|39](#) [44|61|74|61](#)

Here you will find the latest data on COVID-19 cases in British Columbia.

[43|4F|56|49|44|2D|31|39](#) [44|61|73|68|62|6F|61|72|64](#)

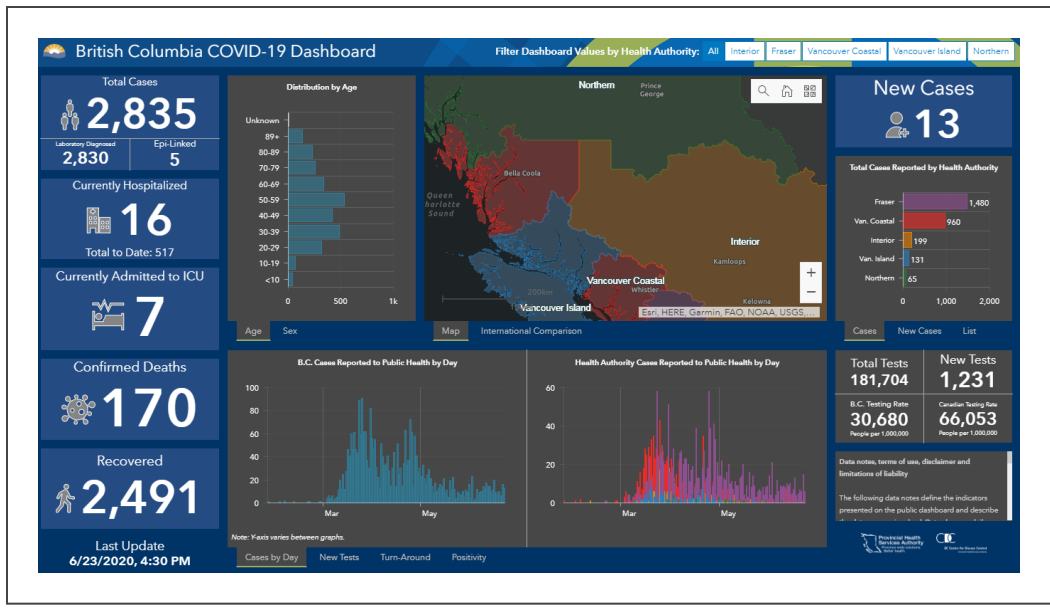
Click on the links or image below to access the BC COVID-19 dashboard for the latest case counts and information on recoveries, deaths, hospitalizations, testing and more:

- [BC COVID-19 Dashboard](#) (mobile and most browsers)
- [BC COVID-19 Dashboard for Internet Explorer users](#)

The dashboard is updated Monday to Friday at 5 p.m.

By accessing and using this dashboard, you agree to be bound by the [terms of use, disclaimer and limitation of liability](#).

**Update - As of June 4, 2020**, B.C. is reporting [epi-linked cases](#), meaning people who were never tested but were presumed to have COVID-19 because they developed symptoms and were close contacts of a laboratory confirmed case. Epi-linked cases identified since May 19, 2020, are now included in the case total, but are not considered new cases unless they were reported in the last 24 hours.



**Click image to visit the dashboard**

Organizations are welcome to link to or embed the dashboards on their websites.

[44|6F|77|6E|6C|6F|61|64](#) [74|68|65](#) [64|61|74|61](#)

Download CSV files of BC COVID-19 data

[43|61|73|65](#) [64|61|74|69](#) [40|61|62|6F|72|61|74|6F|72|79](#) [64|61|74|61](#)

**Disclaimer and data notes; Contact: [admininfo@bccdc.ca](mailto:admininfo@bccdc.ca)**

If you are a GIS/Data Scientist looking to integrate dynamic data services into your own mapping/ dashboard products please refer to the links below:

- [Case data \(spatial\)](#)
- [Case details](#)
- [Laboratory testing information](#)



- [May 22, 2020](#)
  - Related: [Symptom profile of COVID-19 cases in B.C. as of May 22, 2020](#)
- [May 21, 2020](#)
- [May 20, 2020](#)
- [May 19, 2020](#)

### **Week: May 11 - 15**

- [May 15, 2020](#)
- [May 14, 2020](#)
- [May 13, 2020](#)
- [May 12, 2020](#)
- [May 11, 2020](#)

### **Week: May 4 - 8**

- [May 8, 2020](#)
- [May 7, 2020](#)
- [May 6, 2020](#)
- [May 5, 2020](#)
- [May 4, 2020](#)

### **Week: April 27 - May 1**

- May 1, 2020
- April 30, 2020
- April 29, 2020
- April 28, 2020
- April 27, 2020

### **Week: April 20 - 24**

- April 24, 2020
- April 23, 2020
- April 22, 2020
- April 21, 2020
- April 20, 2020

### **Week: April 13 - 17**

- April 17, 2020
- April 16, 2020
- April 15, 2020
- April 14, 2020

### **Week: April 6 - 10**

- [April 9 2020](#)
- [April 8, 2020](#)
- [April 7, 2020](#)
- [April 6, 2020](#)

### **Week: March 30 - April 3**

- [April 3, 2020](#)
- [April 2, 2020](#)
- [April 1, 2020](#)
- [March 31, 2020](#)
- [March 30, 2020](#)

### **Week: March 23 - 27**

- [March 27, 2020](#)
- [March 26, 2020](#)
- [March 25, 2020](#)
- [March 24, 2020](#)
- [March 23, 2020](#)

000000000000  
43616E616461

For the latest case counts and data from across Canada, visit the [Public Health Agency of Canada dashboard](#).

