



Search for programs and online s

MENU

Manitoba.ca > COVID-19



## [COVID-19 Screening Tool - Experiencing symptoms? Take a self-assessment](#)

The online screening tool is now available in an interactive voice response (IVR) format. CALL 1-877-308-9038

It is not a replacement for Health Links-Info Sante. It is specifically for Manitobans who prefer to complete the screening tool by phone rather than online.

The tool asks callers standard screening questions for COVID-19. If needed, it directs those who may require a conversation with a health care professional to Health Links-Info Santé. People who want to self-screen can call 1-877-308-9038.

Contact **Health Links-Info Santé** at **204-788-8200** or **1-888-315-9257** (toll-free) if you're experiencing symptoms of the 2019 novel coronavirus.

Do not call 911 unless it is an emergency.

### Current Situation

**NEW** Last updated: April 1, 2020

Public health officials advise 24 additional cases of COVID-19 have been identified as of 9:30 a.m., bringing the total number of lab-confirmed positive and probable positive cases in Manitoba to 127 at this time.

The data also shows:

- four individuals are currently hospitalized including three in intensive care;
- four individuals have recovered from COVID-19; and
- the total number of deaths reported in Manitoba remains at one.

There are 16 community testing sites in Manitoba, including seven drive-thru locations, with plans to open in more communities in the coming days. The public is reminded that a referral to these sites is needed and they are not walk-in clinics. Information on locations and hours of operation are available on [Community Screening Locations](#).

Under The Public Health Act, new public health orders take effect April 1. Additional details are available at: [State of Emergency page](#).

**NEW** April 1, 2020 - [COVID-19 Bulletin #38](#)

[View all news releases](#)

## Resources

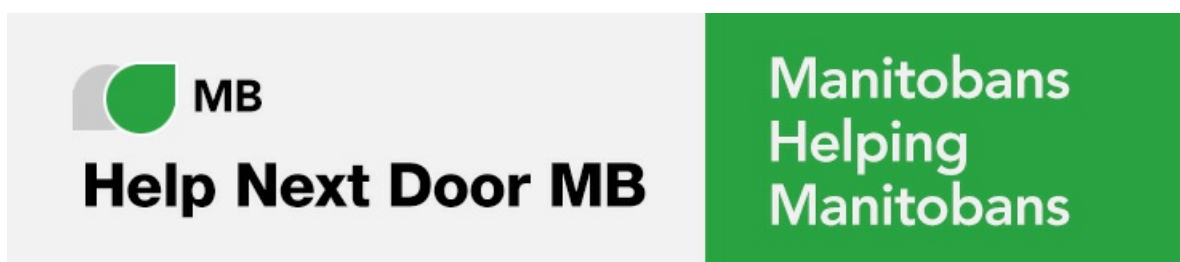


**COVID-19 NOVEL CORONAVIRUS**

**WE NEED YOUR HELP!**

Are you a business able to supply products and services in support of **Manitoba's** response to **COVID-19**:

Icons representing: hand sanitizer, home, face mask, healthcare worker, soap, and person in protective gear.



**MB**  
**Help Next Door MB**

**Manitobans  
Helping  
Manitobans**

## News Conferences

**NEW** Last updated: April 1, 2020

**April 1, 2020 1:00 p.m.**

COVID-19 (Coronavirus) update

---

## Cases and Risk of COVID-19 in Manitoba

**NEW** Last updated: April 1, 2020 - 1:00 p.m.

As of April 1, 10,044 tests for COVID-19 have been completed.

### Summary of Persons with COVID-19 in Manitoba

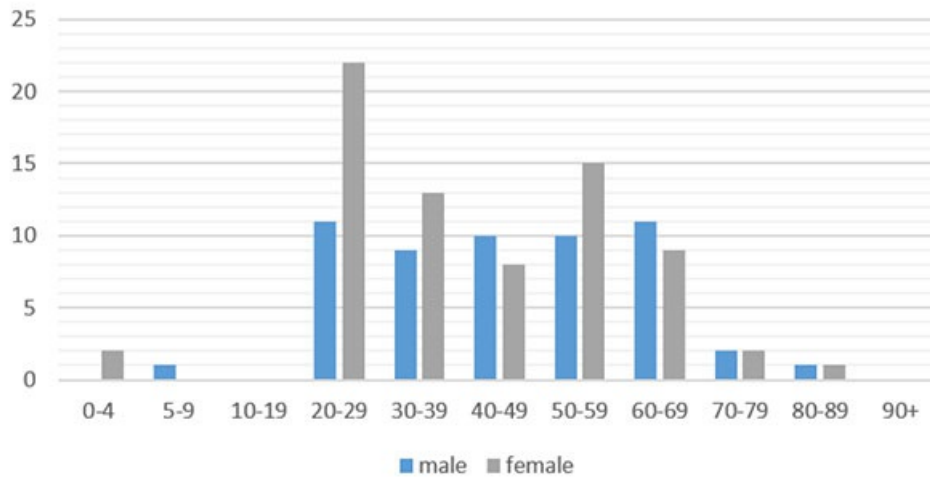
| Regions           | Total Cases | Confirmed Positive * | Probable Positive ** | Deaths   |
|-------------------|-------------|----------------------|----------------------|----------|
| Interlake-Eastern | 5           | 3                    | 2                    | 0        |
| Northern          | 1           | 1                    | 0                    | 0        |
| Prairie Mountain  | 9           | 9                    | 0                    | 0        |
| Southern          | 8           | 6                    | 2                    | 0        |
| Winnipeg          | 104         | 90                   | 14                   | 0        |
| <b>Totals</b>     | <b>127</b>  | <b>109</b>           | <b>18</b>            | <b>1</b> |

- \* A confirmed positive case has tested positive at both Cadham Provincial Laboratory and the National Microbiology Laboratory.
- \*\* A probable positive case has tested positive at Cadham Provincial Laboratory and is awaiting confirmatory testing results from the National Microbiology Laboratory.

If you have a positive test result, public health officials will call you directly. That is the start of the public health investigation process. In addition, if these public health investigations identify you as a possible close contact, they will call you and provide advice on how to self-monitor for symptoms and self-isolate.

If your test result is negative, it may take longer for you to be advised of your test results. If you have been exposed to COVID-19 through travel or close contact with a case, ensure you self-isolate for 14 days after symptoms develop. If you haven't been exposed to a case or travel, stay home until all your symptoms are gone.

## COVID-19 case counts by age/gender



## Canadian Situation

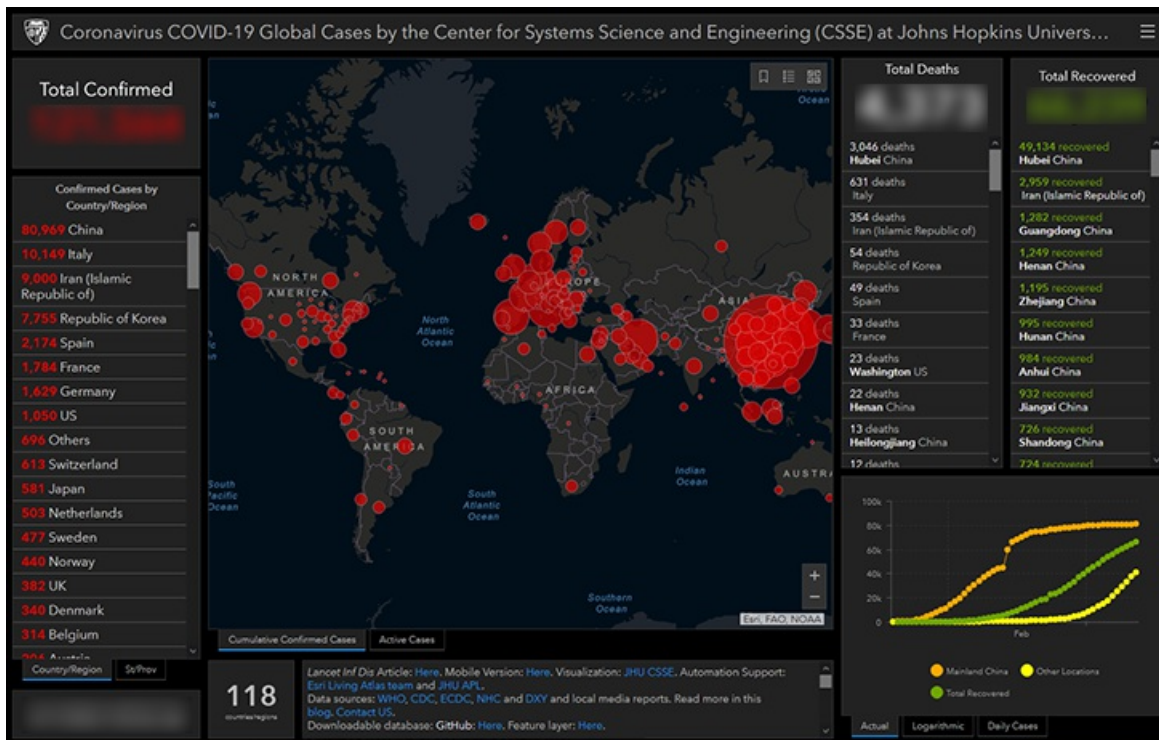
**NEW** Last updated: April 1, 2020

As of April 1, 2020 (10:00 am), 9,005 confirmed cases, 12 probable cases and 105 deaths associated with COVID-19 have been confirmed in Canada. Cases have been reported in all provinces and territories across Canada, with the exception of Nunavut. Probable cases have also been reported in Manitoba. Deaths associated with COVID-19 have been reported in Alberta, British Columbia, Ontario, Manitoba, Newfoundland and Labrador, Quebec and Saskatchewan. [Public Health Agency of Canada's COVID-19: Outbreak update website.](#)

## Worldwide Reported Cases

For a complete list of countries reporting COVID-19 cases see the most current [WHO Coronavirus Disease situation report](#) or click on the [Johns Hopkins Coronavirus COVID-19 Global Case map dashboard](#).

(click on map image below for most current case numbers)



## Get Started

---

### Home

[Community Screening Locations](#)

[About COVID-19](#)

[Prepare and Prevent](#)

[Information for Manitobans](#)

[Social Distancing](#)

[Resources and Links](#)

[Be Well - iCBT](#)

[Flights and Events with Confirmed Cases](#)

[State of Emergency](#)

[For Health Care Providers](#)

[Fact Sheets](#)

[Media Releases](#)

### Additional Resources

---

[Public Health Agency of Canada - Coronavirus](#)

[Government of Canada Travel Health Notice - Novel Coronavirus in China](#)

[The US Centers for Disease Control and Prevention - 2019 Novel Coronavirus](#)

[The World Health Organization - Coronavirus](#)

[Public Health - Health, Seniors and Active Living](#)

[Accessibility](#)

[Disclaimer](#)

[Copyright](#)

[Privacy](#)

[Twitter](#)

[Facebook](#)

[YouTube](#)

[Flickr](#)

**Manitoba** 