

Search for program

- [Resident and online services](#)
 - [Search Programs and Services](#)
 - [Forms](#)
 - [Publications](#)
 - [Finding Work](#)
 - [Lost Identification](#)
 - [Moving to or Around Manitoba](#)
 - [Communities around Manitoba](#)
 - [Maps](#)
 - [Online Services](#)
 - [Social Media Directory](#)
 - [Mobile Applications](#)
- [Business](#)
 - [Search for Business Information](#)
 - [Starting a Business](#)
 - [Business Research](#)
 - [Financing a Business](#)
 - [Registration, Legal and Licencing](#)
 - [Doing Business with Government](#)
 - [BizPaL](#)
- [Government](#)
 - [Premier](#)
 - [Cabinet Ministers](#)
 - [Departments](#)
 - [Agencies, Boards and Commissions](#)
 - [OpenMB/Proactive Disclosure](#)
 - [Legislative Assembly](#)
 - [Manitoba Courts](#)
 - [Manitoba Laws](#)
- [Visitors](#)
 - [Things to do](#)
 - [Places to Go](#)
 - [Where to Stay](#)

- [Events](#)
- [Trip Essentials](#)
- [Visitor Information Center](#)
- [Manitoba.ca](#)
- > [COVID-19](#)
- > [COVID-19 Updates](#)



COVID-19 Updates

On this page:

- [Current Situation](#)
- [News Conferences](#)
- [Cases and Risk of COVID-19 in Manitoba](#)
- [Canadian Situation](#)
- [Worldwide Reported Cases](#)

Current Situation

NEW Last updated: May 3, 2020

Public health officials advise one new case of COVID-19 has been identified as of 9:30 a.m. today, bringing the total number of lab-confirmed positive and probable positive cases in Manitoba to 281.

The data also shows:

- five individuals are currently hospitalized, with no individuals in intensive care;
- 38 active cases and 237 individuals who have recovered from COVID-19; and
- the number of deaths due to COVID-19 remains at six.

All Manitobans returning to work are now eligible to access the temporary child care system to find a location that meets their needs. Families can use the online tool at [eswchildcare.ca](#) to view available spaces and then contact centres directly to finalize arrangements. Licensed centres are able to provide care for up to 16 children per centre. Larger centres with separate rooms and external entrances can accommodate up to 16 children per room. Home-based child care providers can continue to provide care for up to eight children.

Restoring Safe Services Together, Manitoba's pandemic and economic roadmap for recovery is available at [manitoba.ca/restoringsafeservices](#). Updates have been made to this document to clarify inconsistencies between the plan and the recent public health orders. Businesses with questions about how the new orders apply to them should visit [engagemb.ca](#).

NEW May 3 2020 - [COVID-19 Bulletin #70](#)

News Conferences

NEW Last updated: May 1, 2020

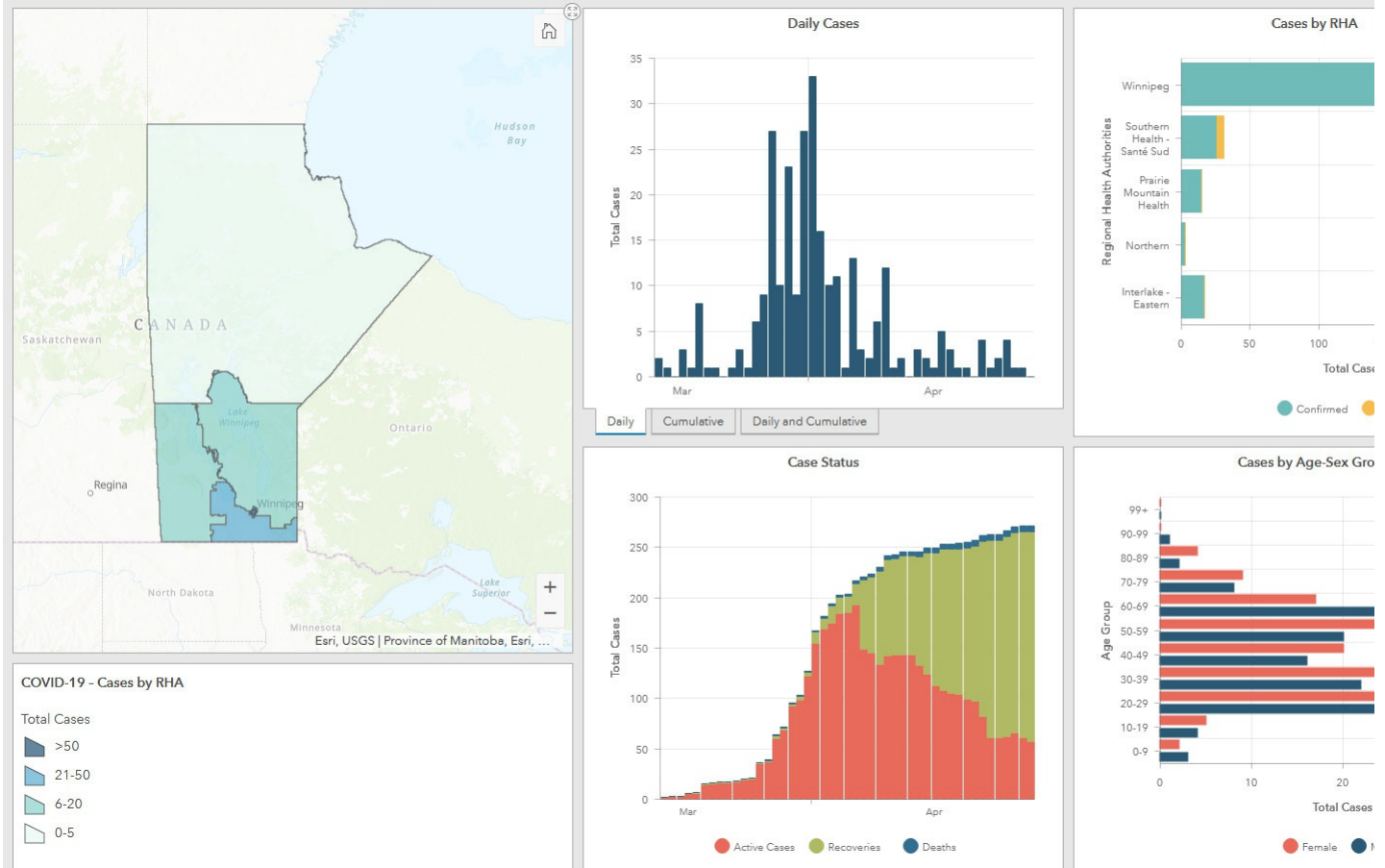
May 1, 2020 1:00 p.m.

COVID-19 (Coronavirus) updates

Cases and Risk of COVID-19 in Manitoba

The dashboard and graphs are updated daily at 1 p.m. Please note: tests results during the weekend are unofficial at this time and will be confirmed on Monday.

Manitoba COVID-19



[View the full dashboard for cases and risks of COVID-19 in Manitoba.](#)

Internet Explorer users: [please use the Internet Explorer version](#) of the Manitoba COVID-19 Dashboard.

[View the graphs for cases and risk of COVID-19 in Manitoba](#)

Canadian Situation

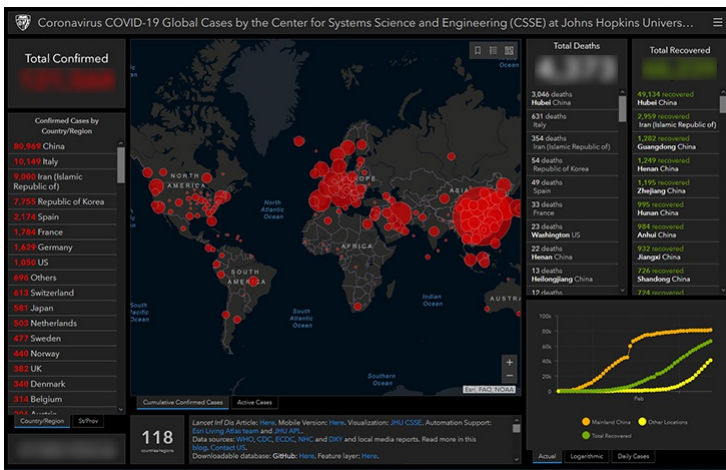
NEW Last updated: April 25, 2020

As of April 25, 2020 (10:00 am), 44,353 confirmed cases, 11 probable cases and 2,350 deaths associated with COVID-19 have been confirmed in Canada. Cases have been reported in all provinces and territories across Canada, with the exception of Nunavut. Probable cases have all been reported in Manitoba. Deaths associated with COVID-19 have been reported in Alberta, British Columbia, Ontario, Manitoba, Newfoundland and Labrador, Nova Scotia, Quebec and Saskatchewan. [Public Health Agency of Canada's COVID-19: Outbreak update](#) website.

Worldwide Reported Cases

For a complete list of countries reporting COVID-19 cases see the most current [WHO Coronavirus Disease situation report](#) or click on the Johns Hopkins Coronavirus COVID-19 Global Case map dashboard.

(click on map image below for most current case numbers)



Get Started

- [COVID-19 - Home](#)
- [COVID-19 Updates](#)
- [Restoring Safe Services](#)
- [Information and Support for Manitobans](#)
- [Information for Businesses](#)
- [State of Emergency](#)
- [About COVID-19](#)
- [Flights and Events with Confirmed Cases](#)
- [Prepare and Prevent](#)
- [Community Screening Locations](#)
- [Resources and Links](#)
- [Care for Your Mental Health](#)
- [For Health Care Providers](#)
- [Media Releases](#)
- [Contact](#)
- [Accessibility](#)
- [Disclaimer](#)
- [Copyright](#)
- [Privacy](#)
- [Twitter](#)
- [Facebook](#)
- [YouTube](#)
- [Flickr](#)

