



Search for programs and online s

Manitoba.ca > COVID-19 > COVID-19 Updates



## COVID-19 Updates

### On this page:

- [Current Situation](#)
- [News Conferences](#)
- [Cases and Risk of COVID-19 in Manitoba](#)
- [Canadian Situation](#)
- [Worldwide Reported Cases](#)

### Current Situation

**NEW** Last updated: May 16, 2020

#### Current Situation

Public health officials advise no new cases of COVID-19 have been identified as of 9:30 a.m. today. The total number of lab-confirmed positive and probable positive cases in Manitoba is 289.

The data also shows:

- two individuals are currently hospitalized, with one individual in intensive care;
- 25 active cases and 257 individuals who have recovered from COVID-19; and
- the number of deaths due to COVID-19 remains at seven.

As of yesterday, an additional 908 laboratory tests were performed. This brings the total number of tests performed since early February to 33,953.

It is important to note that while some gradual lifting of restrictions has begun, significant work to limit the spread of COVID-19 must continue. Public health is also advising people to remain within or close to their home communities. This includes limiting travel, even within Manitoba and neighbouring jurisdictions, to essential trips only. If you travel for camping or to the cottage, you are reminded to take steps to [maintain social distancing](#). With the long weekend here, Manitobans are reminded that travel is not permitted from southern Manitoba to areas, including

campgrounds, north of the 53<sup>rd</sup> parallel. This is essentially anywhere north of the northern end of Lake Winnipeg.

Manitobans experiencing flu or cold-like symptoms no longer require a referral from Health Links-Info Sante or their family physician before heading to a community site for COVID-19 testing. Anyone with symptoms is still encouraged to use the online screening tool to determine whether they meet the necessary criteria to be tested.

Many community testing sites remain open as regularly scheduled this Saturday and Sunday. For Victoria Day, the Sargent Tommy Prince Place testing site and assessment clinic in Winnipeg will be open, as will the Bison Drive drive-thru site. Testing locations in Winkler and Selkirk will also be open. All other locations throughout the province will be closed on Monday and reopen on Tuesday.

**NEW** May 16 2020 - [COVID-19 Bulletin #83](#)

---

## News Conferences

**NEW** Last updated: May 15, 2020

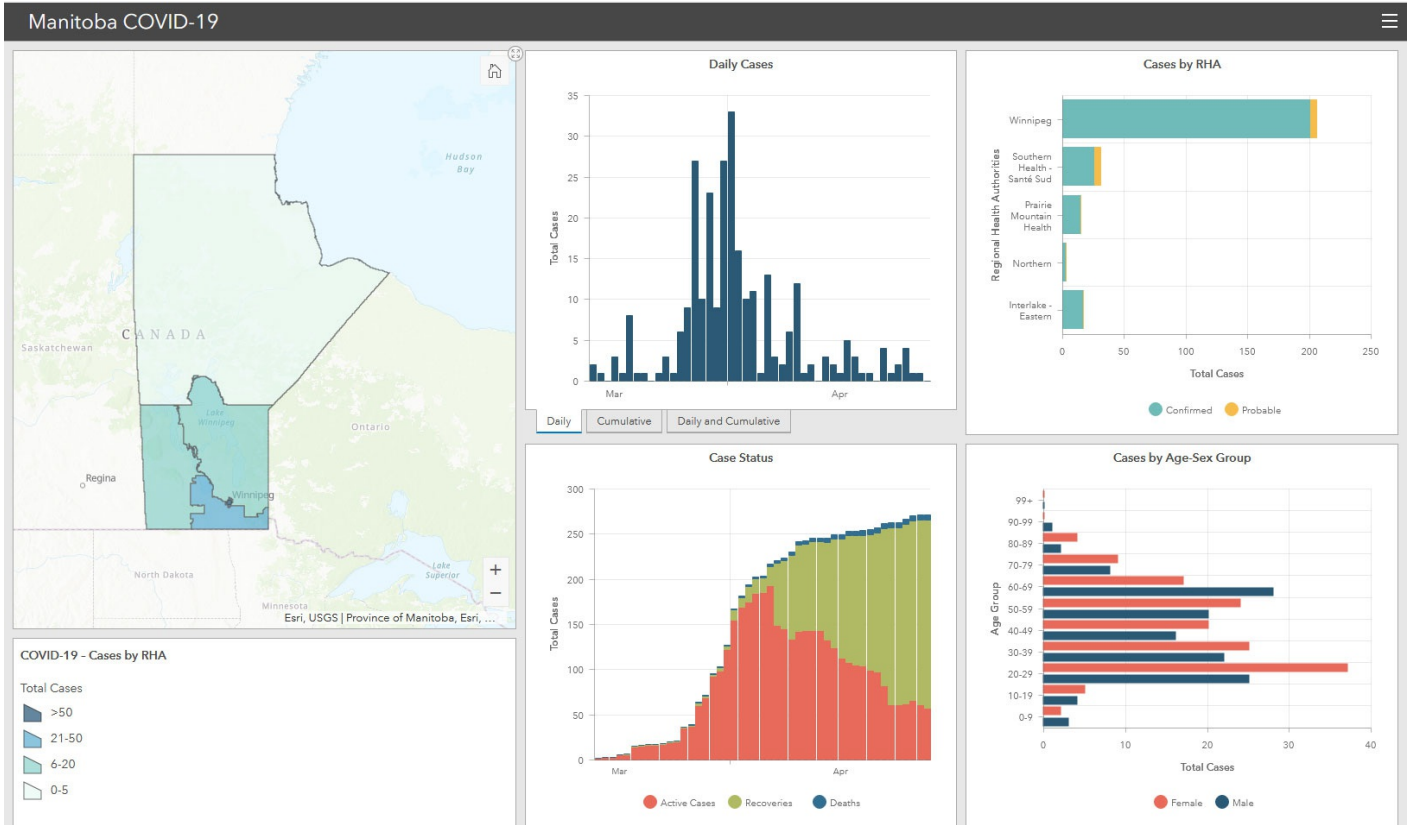
**May 15, 2020 1:00 p.m.**

COVID-19 (Coronavirus) update

---

## Cases and Risk of COVID-19 in Manitoba

The dashboard and graphs are updated daily at 1 p.m. Please note: tests results during the weekend are unofficial at this time and will be confirmed on Monday.



[View the full dashboard for cases and risks of COVID-19 in Manitoba.](#)

Internet Explorer users: [please use the Internet Explorer version of the Manitoba COVID-19 Dashboard.](#)

[View the graphs for cases and risk of COVID-19 in Manitoba.](#)

## Canadian Situation

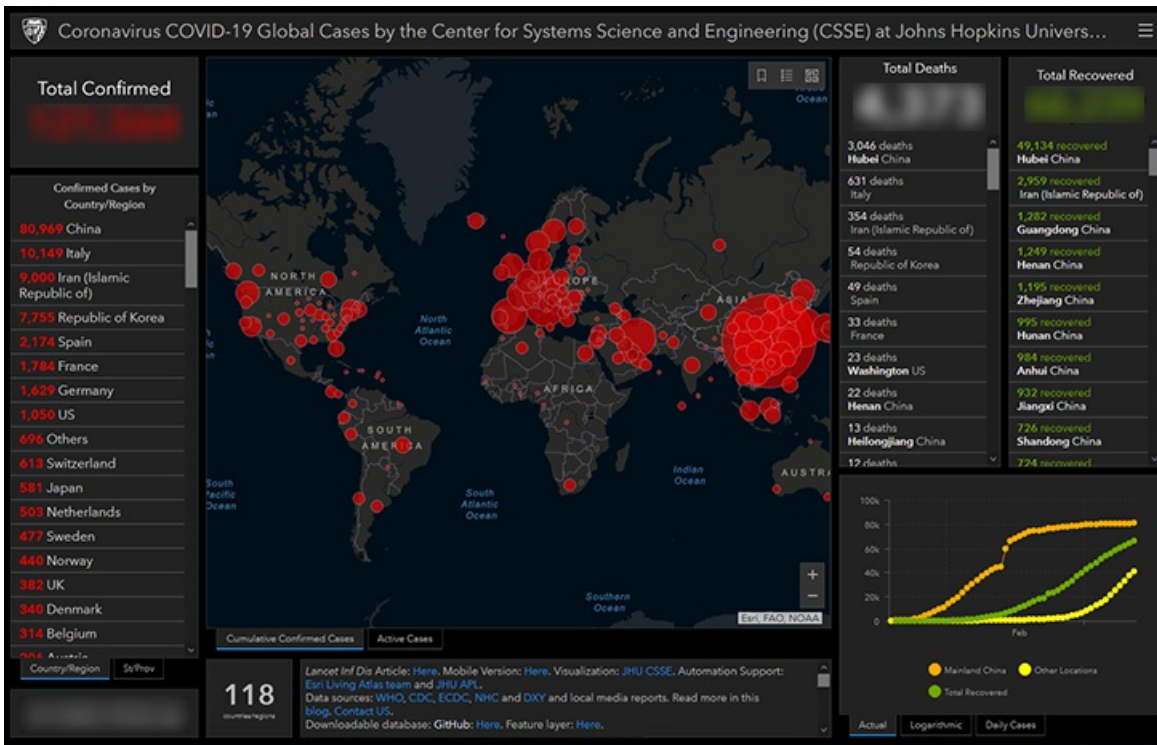
**NEW** Last updated: April 25, 2020

As of April 25, 2020 (10:00 am), 44,353 confirmed cases, 11 probable cases and 2,350 deaths associated with COVID-19 have been confirmed in Canada. Cases have been reported in all provinces and territories across Canada, with the exception of Nunavut. Probable cases have all been reported in Manitoba. Deaths associated with COVID-19 have been reported in Alberta, British Columbia, Ontario, Manitoba, Newfoundland and Labrador, Nova Scotia, Quebec and Saskatchewan. [Public Health Agency of Canada's COVID-19: Outbreak update website.](#)

## Worldwide Reported Cases

For a complete list of countries reporting COVID-19 cases see the most current [WHO Coronavirus Disease situation report](#) or click on the Johns Hopkins Coronavirus COVID-19 Global Case map dashboard.

**(click on map image below for most current case numbers)**



## Get Started

[COVID-19 - Home](#)

### COVID-19 Updates

[Restoring Safe Services](#)

[Information and Support for Manitobans](#)

[Information for Businesses](#)

[State of Emergency](#)

[About COVID-19](#)

[Flights and Events with Confirmed Cases](#)

[Prepare and Prevent](#)

[Community Screening Locations](#)

[Resources and Links](#)

[Care for Your Mental Health](#)

[For Health Care Providers](#)

[Media Releases](#)

[Contact](#)

[Accessibility](#)

[Disclaimer](#)

[Copyright](#)

[Privacy](#)

[Twitter](#)

[Facebook](#)

[YouTube](#)

Flickr

