



Search for programs and online s

Manitoba.ca > COVID-19 > COVID-19 Updates



## COVID-19 Updates

### On this page:

- [Current Situation](#)
- [News Conferences](#)
- [Cases and Risk of COVID-19 in Manitoba](#)
- [Canadian Situation](#)
- [Worldwide Reported Cases](#)

### Current Situation

**NEW** Last updated: June 3, 2020

Public health officials advise one new case of COVID-19 has been identified as of 9:30 a.m. today. The total number of lab-confirmed positive and probable positive cases in Manitoba is 298.

The data also shows:

- no individuals in hospital or intensive care;
- nine active cases and 282 individuals who have recovered from COVID-19; and
- the number of deaths due to COVID-19 remains at seven.

Community testing sites in Dauphin and Swan River have moved to new locations and have revised hours of operation. In Dauphin, a drive-thru testing site is now located in the parking lot at the Dauphin Community Health Services Building, 625 Third St. SW and will be open Monday to Friday, from 10 a.m. to 2 p.m. The Swan River drive-thru testing site has been relocated to the parking lot at the Swan Valley Primary Care Centre, 1000 Main St. and is open Monday to Friday, from 10 a.m. to 1 p.m.

For a full list of community testing sites and their hours of operation, visit:

<https://www.gov.mb.ca/covid19/locations.html>.

Hospitals and health centres will begin allowing expanded visitor access for inpatients as part of Phase Two of the Restoring Safe Services plan. The gradual easing of visitor restrictions will occur at individual sites across the province beginning as early as Friday. These changes will allow patients to see loved ones in person while measures remain in place to prevent the introduction and spread of COVID-19 in health facilities.

**NEW** June 3, 2020 - [COVID-19 Bulletin #101](#)

---

## News Conferences

**NEW** *Last updated: June 3, 2020*

**June 3, 2020 1:00 p.m.**

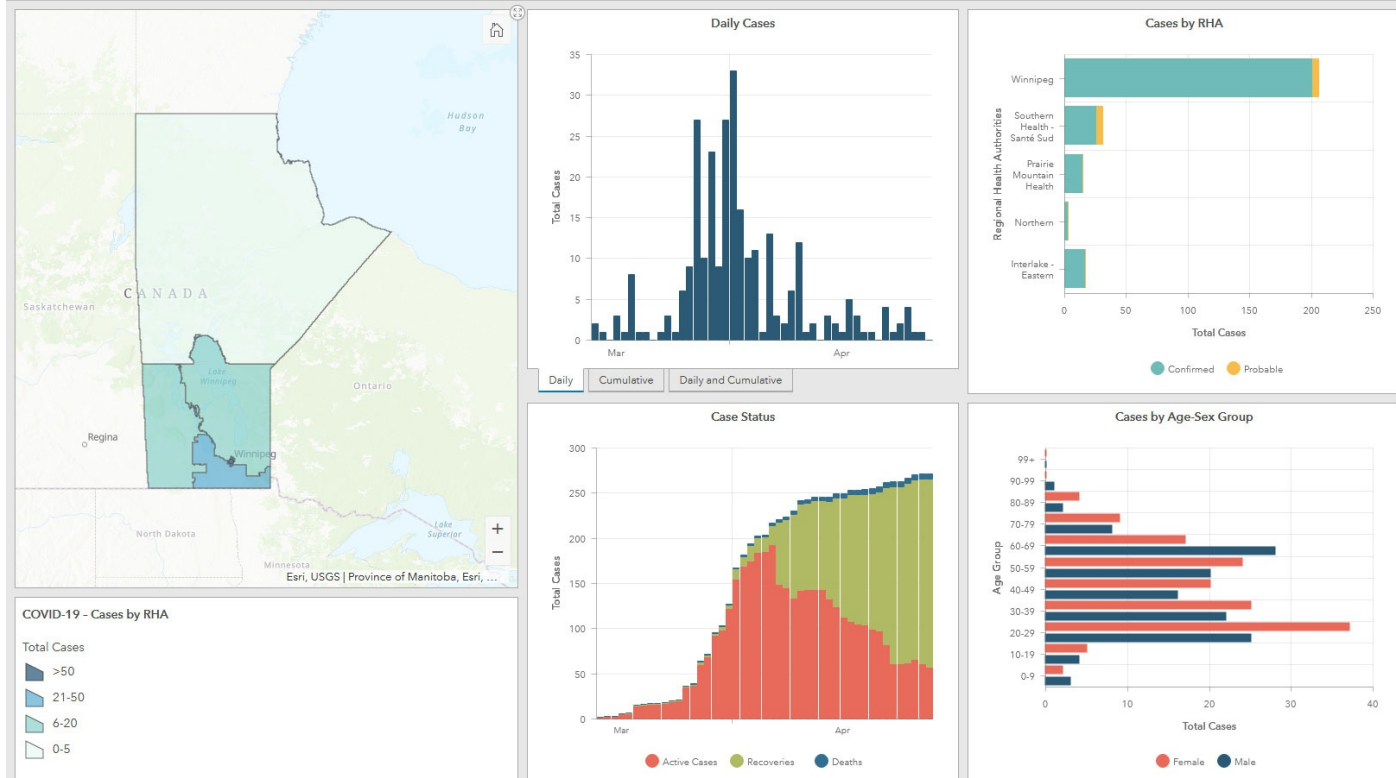
COVID-19 (Coronavirus) update

---

## Cases and Risk of COVID-19 in Manitoba

The dashboard and graphs are updated daily at 1 p.m. Please note: tests results during the weekend are unofficial at this time and will be confirmed on Monday.

---



[View the full dashboard for cases and risks of COVID-19 in Manitoba.](#)

Internet Explorer users: [please use the Internet Explorer version of the Manitoba COVID-19 Dashboard.](#)

[View the graphs for cases and risk of COVID-19 in Manitoba](#)

## Canadian Situation

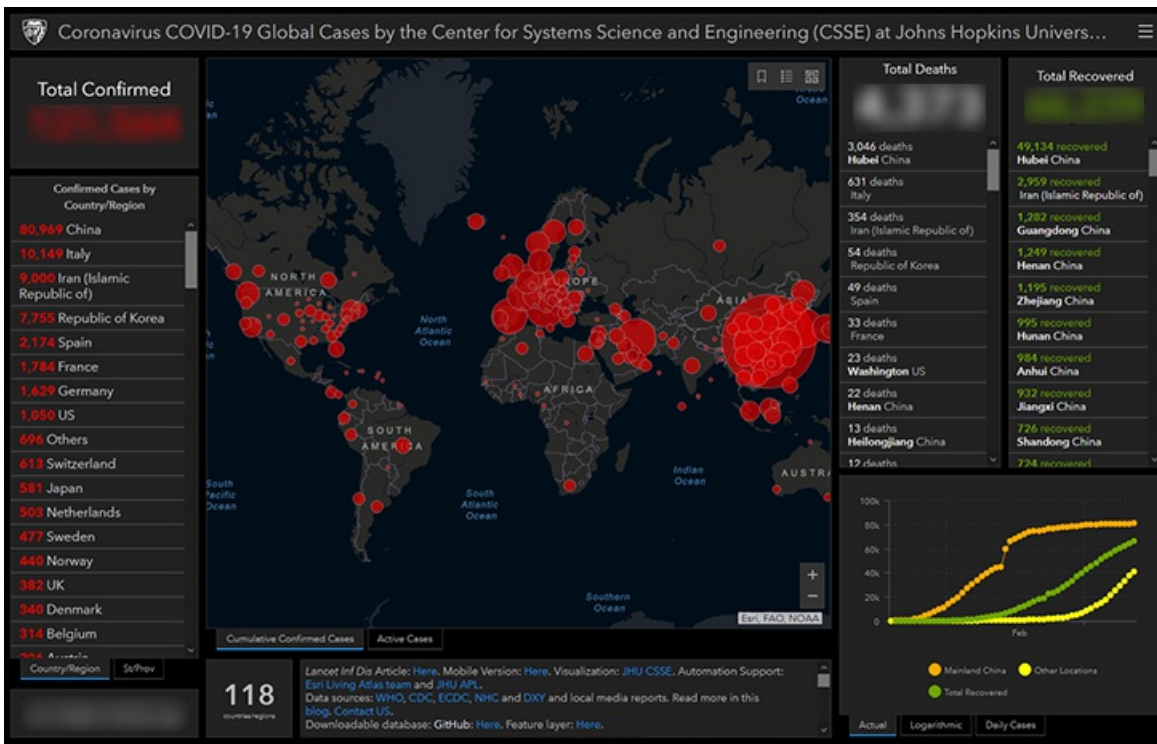
**NEW** Last updated: May 26, 2020

As of May 26, 2020 (10:00 am), 85,987 confirmed cases, 11 probable cases and 6,566 deaths associated with COVID-19 have been confirmed in Canada. Cases have been reported in all provinces and territories across Canada, with the exception of Nunavut. Probable cases have all been reported in Manitoba. Deaths associated with COVID-19 have been reported in Alberta, British Columbia, Ontario, Manitoba, Newfoundland and Labrador, Nova Scotia, Quebec and Saskatchewan. [Public Health Agency of Canada's COVID-19: Outbreak update website.](#)

## Worldwide Reported Cases

For a complete list of countries reporting COVID-19 cases see the most current [WHO Coronavirus Disease situation report](#) or click on the [Johns Hopkins Coronavirus COVID-19 Global Case map dashboard](#).

**(click on map image below for most current case numbers)**



## Get Started

[COVID-19 - Home](#)

### COVID-19 Updates

[Restoring Safe Services](#)

[Information and Support for Manitobans](#)

[Information for Businesses](#)

[State of Emergency](#)

[About COVID-19](#)

[Prepare and Prevent](#)

[Community Screening Locations](#)

[Resources and Links](#)

[Care for Your Mental Health](#)

[For Health Care Providers](#)

[Media Releases](#)

[Contact](#)

[Flights and Events with Confirmed Cases](#)

[Accessibility](#)

[Disclaimer](#)

[Copyright](#)

[Privacy](#)

[Twitter](#)

[Facebook](#)

[YouTube](#)

[Flickr](#)

