



Search for programs and online s

Manitoba.ca > COVID-19 > COVID-19 Updates



## COVID-19 Updates

### On this page:

- [Current Situation](#)
- [News Conferences](#)
- [Cases and Risk of COVID-19 in Manitoba](#)
- [Canadian Situation](#)
- [Worldwide Reported Cases](#)

### Current Situation

**NEW** Last updated: June 19, 2020, 4:00 p.m.

Public Health officials advise there were two additional cases of COVID-19 identified later today.

Today's cases are a male and a female, both in their 50s, from Southern Health - Santé Sud.

One of the new individuals announced as a positive COVID-19 case today attended JT's Store and Diner (40 Penner Drive) in Blumenort, Manitoba June 10, 2020 at approximately 6 p.m. The individual was symptomatic at the time. Public health is sharing this information to ensure people are aware and know to seek testing if symptoms develop.

Manitobans are reminded to stay home if you feel ill, even if you are only feeling a little unwell.

**NEW** June 19, 2020 - [COVID-19 Bulletin #114](#)

**NEW** Last updated: June 19, 2020, 1:00 p.m.

Public health officials advise one new case of COVID-19 was identified as of 9:30 a.m. today. The total number of lab-confirmed positive and probable positive cases in Manitoba is 309.

The data also shows:

- no individuals in hospital or intensive care,
- nine active cases and 293 individuals who have recovered from COVID-19, and
- the number of deaths due to COVID-19 remains at seven.

An additional 626 laboratory tests were performed yesterday. This brings the total number of tests performed since early February to 56,317.

The hours of operation at the Thunderbird House COVID-19 testing site have changed. The site is now open Monday to Friday, from 9 a.m. to 4 p.m. Additionally, it will be closed Monday, June 22 for National Indigenous Peoples Day. For information on testing sites visit <https://manitoba.ca/covid19/locations.html>.

Follow the Manitoba Government [Twitter](#) or [Facebook](#) this weekend for updated case numbers. Complete data from the weekend will be updated at 1 p.m. at [www.manitoba.ca/COVID19](http://www.manitoba.ca/COVID19) and in the media bulletin on Monday, June 22, 2020.

**NEW** June 19, 2020 - [COVID-19 Bulletin #113](#)

---

## News Conferences

**NEW** Last updated: June 18, 2020

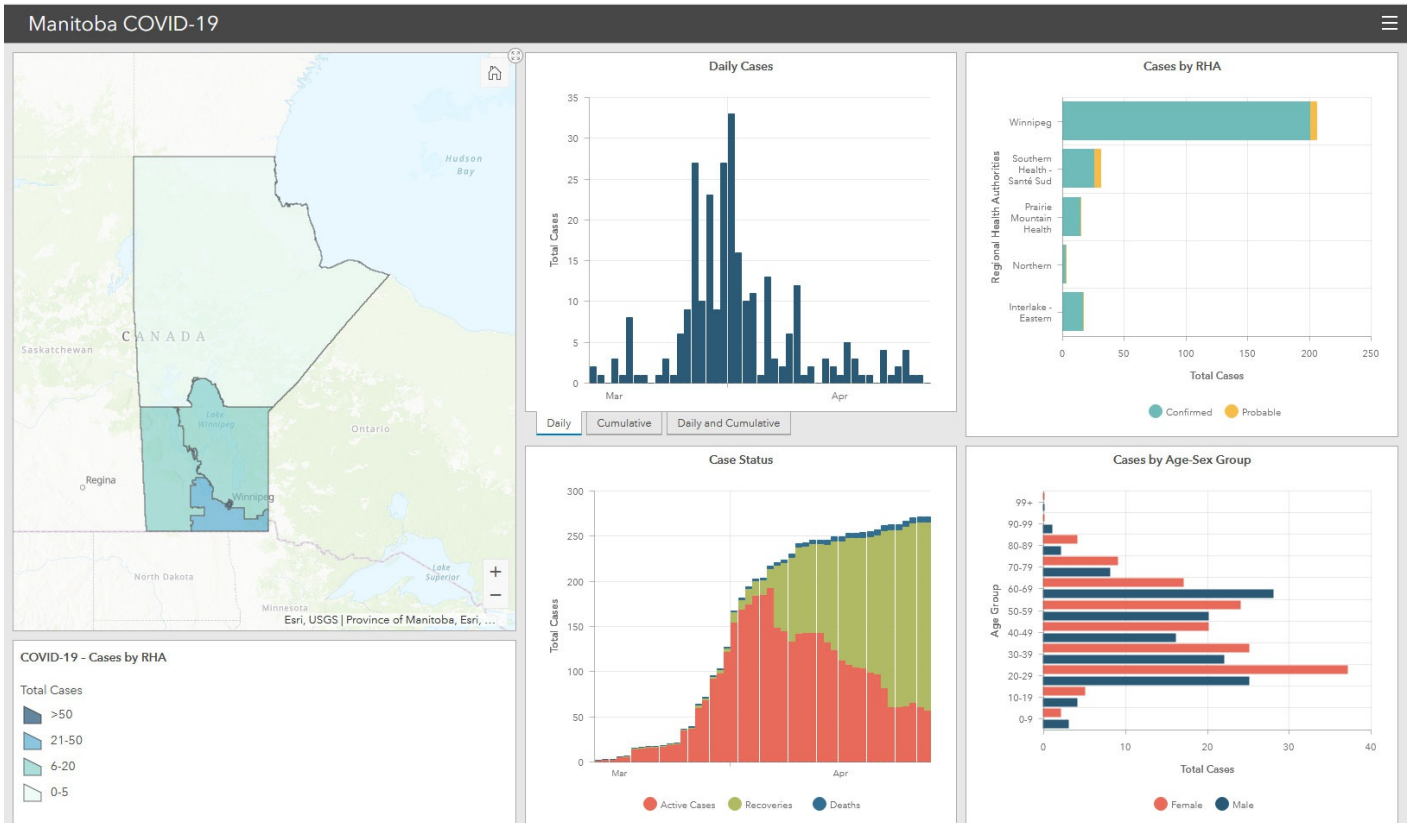
**June 18, 2020 1:00 p.m.**

COVID-19 (Coronavirus) update

---

## Cases and Risk of COVID-19 in Manitoba

The dashboard and graphs are updated Monday to Friday at 1 p.m. Data from the weekend will be updated on the following Monday.



[View the full dashboard for cases and risks of COVID-19 in Manitoba.](#)

Internet Explorer users: [please use the Internet Explorer version](#) of the Manitoba COVID-19 Dashboard.

[View the graphs for cases and risk of COVID-19 in Manitoba](#)

## Canadian Situation

**NEW** Last updated: May 26, 2020

As of May 26, 2020 (10:00 am), 85,987 confirmed cases, 11 probable cases and 6,566 deaths associated with COVID-19 have been confirmed in Canada. Cases have been reported in all provinces and territories across Canada, with the

exception of Nunavut. Probable cases have all been reported in Manitoba. Deaths associated with COVID-19 have been reported in Alberta, British Columbia, Ontario, Manitoba, Newfoundland and Labrador, Nova Scotia, Quebec and Saskatchewan. [Public Health Agency of Canada's COVID-19: Outbreak update website](#).

## Worldwide Reported Cases

For a complete list of countries reporting COVID-19 cases see the most current [WHO Coronavirus Disease situation report](#) or click on the Johns Hopkins Coronavirus COVID-19 Global Case map dashboard.

(click on map image below for most current case numbers)



## Get Started

[COVID-19 - Home](#)

### COVID-19 Updates

[Restoring Safe Services](#)

[Information and Support for Manitobans](#)

[Information for Businesses](#)

[State of Emergency](#)

[About COVID-19](#)

[Prepare and Prevent](#)

[Community Screening Locations](#)

[Resources and Links](#)

[Care for Your Mental Health](#)

[For Health Care Providers](#)

[Media Releases](#)

[Contact](#)

[Flights and Events with Confirmed Cases](#)

[Accessibility](#)

[Disclaimer](#)

[Copyright](#)

[Privacy](#)

[Twitter](#)

[Facebook](#)

[YouTube](#)

[Flickr](#)

**Manitoba** 