



Search for programs and online s

Manitoba.ca > COVID-19 > COVID-19 Updates



COVID-19 Updates

On this page:

- [Current Situation](#)
- [News Conferences](#)
- [Cases and Risk of COVID-19 in Manitoba](#)
- [Canadian Situation](#)
- [Worldwide Reported Cases](#)

Current Situation

NEW Last updated: June 26, 2020

Public health officials advise two new cases of COVID-19 was identified as of 9:30 a.m. today. The total number of lab-confirmed positive and probable positive cases in Manitoba is 318.

The data also shows:

- no individuals in hospital or intensive care;
- 11 active cases and 300 individuals who have recovered from COVID-19; and
- the number of deaths due to COVID-19 remains at seven.

An additional 1,412 laboratory tests were performed on Wednesday (477) and yesterday (935). This brings the total number of tests performed since early February to 60,775.

New public health orders were issued today. These orders:

- remove restrictions on travel to northern Manitoba and remote communities;
- remove the requirement for people coming to Manitoba to work on film productions to self-isolate for 14 days before entering the province;
- clarify that the only sports teams exempt from self-isolation requirements are professional sports

teams from Manitoba, and remove the requirement for Manitoba sports teams to self-isolate for 14 days before returning to Manitoba;

- permit individuals who are self-isolating under federal or provincial health orders to visit a family member or friend who has a life-threatening disease in a health care facility, if the facility permits them to do so and they are not displaying any symptoms of COVID-19.

To view the orders, visit manitoba.ca/covid19/soe.html. In addition, anyone travelling to northern Manitoba should continue to respect any restrictions that have been put in place by local communities and First Nations.

The COVID-19 community drive-thru site in Selkirk (622 Superior Ave.) is now open Monday to Saturday, from 9 a.m. to 4 p.m. For a full listing of site locations and hours of operation, go online to Manitoba.ca/COVID19.

Canada Day is next week and Manitobans are reminded to continue to practice social distancing and follow public health guidelines for gatherings whether at home, the cottage or camping. Stay home if you feel sick, practice good hand hygiene and cover your cough. If you are travelling, remember to be COVID-CAREFUL and reduce stops.

Follow www.twitter.com/MBGov or www.facebook.com/ManitobaGovernment on the weekend for updated case numbers. Complete data from the weekend will be updated on Monday, June 29 at 1 p.m. at www.manitoba.ca/COVID19 and in the media bulletin.

NEW June 26, 2020 - [COVID-19 Bulletin #119](#)

News Conferences

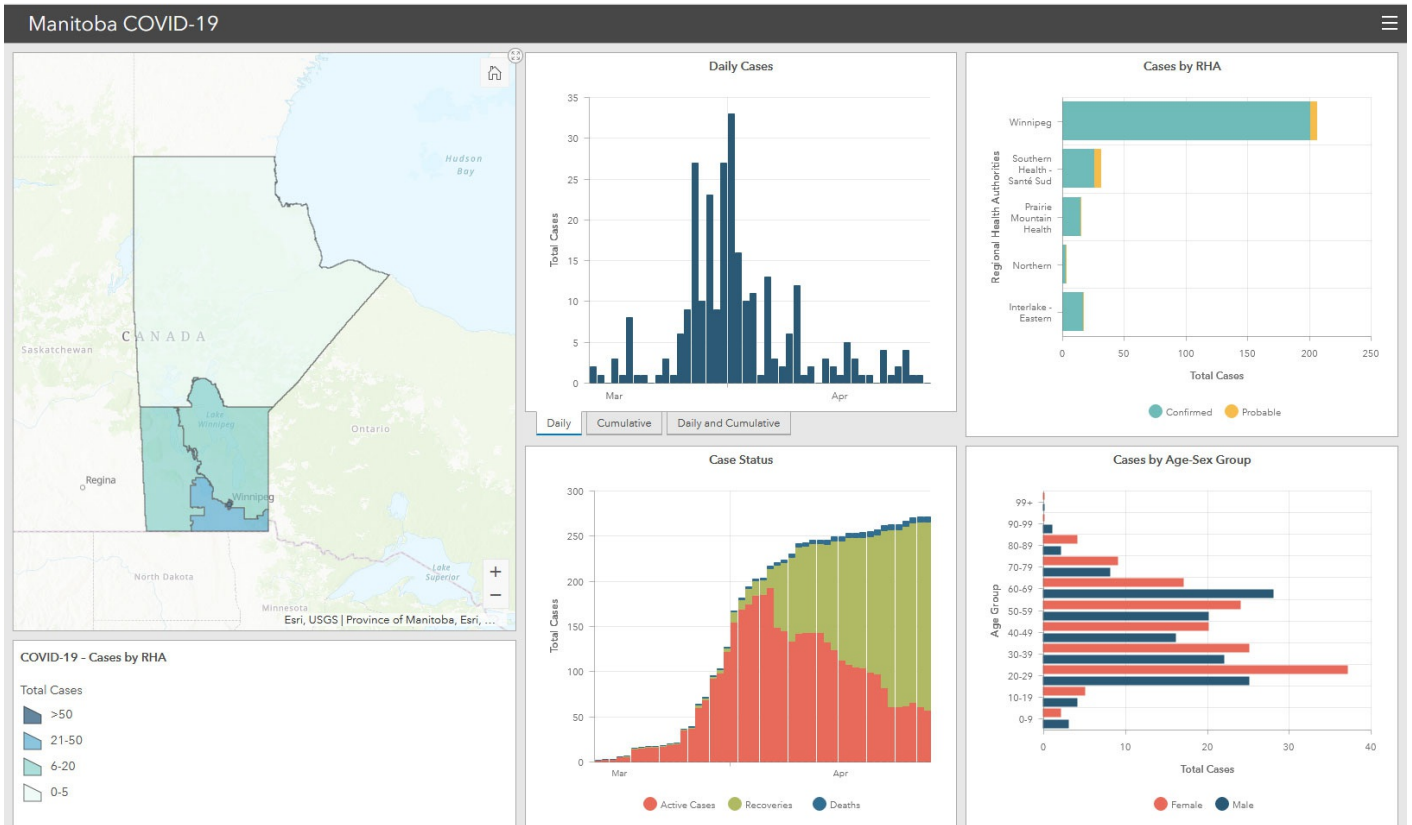
NEW Last updated: June 25, 2020

June 25, 2020 1:00 p.m.

Education Minister Kelvin Goertzen and Dr. Brent Roussin, chief provincial public health officer to discuss Schools reopening plan and COVID-19 update

Cases and Risk of COVID-19 in Manitoba

The dashboard and graphs are updated Monday to Friday at 1 p.m. Data from the weekend will be updated on the following Monday.



[View the full dashboard for cases and risks of COVID-19 in Manitoba.](#)

Internet Explorer users: [please use the Internet Explorer version of the Manitoba COVID-19 Dashboard.](#)

[View the graphs for cases and risk of COVID-19 in Manitoba](#)

Canadian Situation

NEW Last updated: May 26, 2020

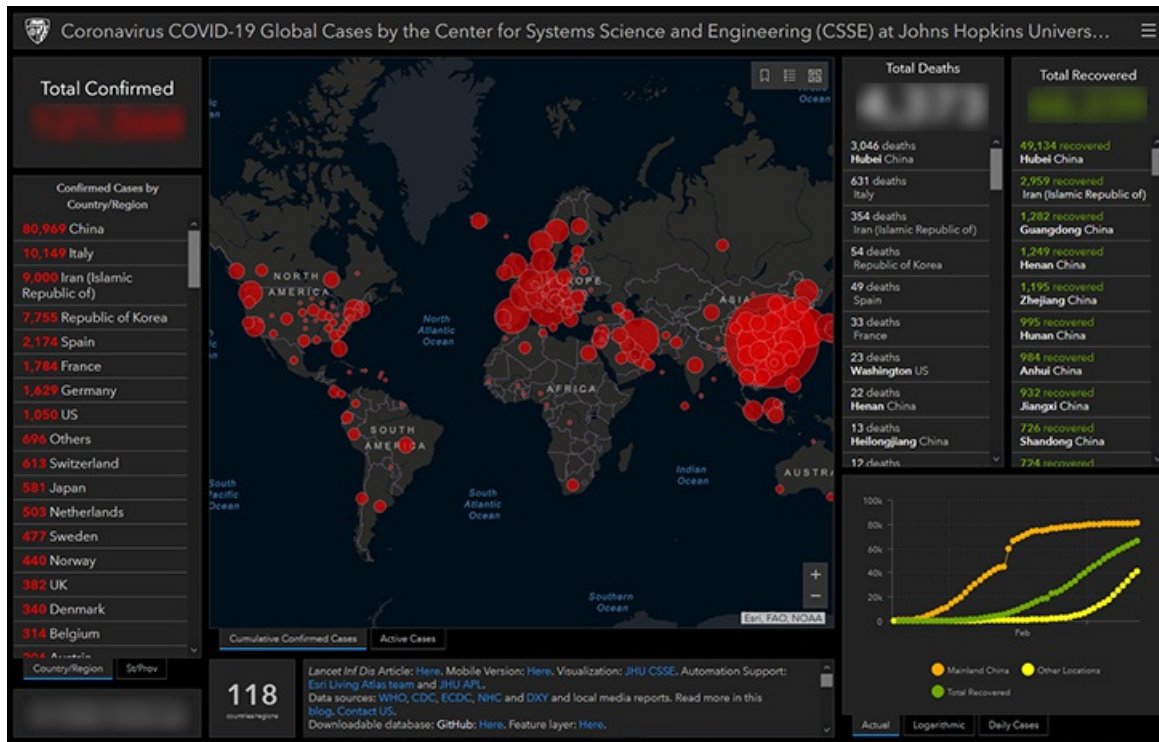
As of May 26, 2020 (10:00 am), 85,987 confirmed cases, 11 probable cases and 6,566 deaths associated with COVID-19 have been confirmed in Canada. Cases have been reported in all provinces and territories across Canada, with the

exception of Nunavut. Probable cases have all been reported in Manitoba. Deaths associated with COVID-19 have been reported in Alberta, British Columbia, Ontario, Manitoba, Newfoundland and Labrador, Nova Scotia, Quebec and Saskatchewan. [Public Health Agency of Canada's COVID-19: Outbreak update website](#).

Worldwide Reported Cases

For a complete list of countries reporting COVID-19 cases see the most current [WHO Coronavirus Disease situation report](#) or click on the Johns Hopkins Coronavirus COVID-19 Global Case map dashboard.

(click on map image below for most current case numbers)



Get Started

[COVID-19 - Home](#)

COVID-19 Updates

[Restoring Safe Services](#)

[Information and Support for Manitobans](#)

[Information for Businesses](#)

[State of Emergency](#)

[About COVID-19](#)

[Prepare and Prevent](#)

[Community Screening Locations](#)

[Resources and Links](#)

[Care for Your Mental Health](#)

[For Health Care Providers](#)

[Media Releases](#)

[Contact](#)

[Flights and Events with Confirmed Cases](#)

[Accessibility](#)

[Disclaimer](#)

[Copyright](#)

[Privacy](#)

[Twitter](#)

[Facebook](#)

[YouTube](#)

[Flickr](#)

Manitoba 