



# GNWT's Response to COVID-19

www.gov.nt.ca

 Call 8-1-1 for any questions about COVID-19

## COVID-19 in NWT

as of December 31, 2020 9:00 AM

### NWT COVID-19 dashboard

Completed Tests

9764

Negative Tests

9740

Tests Pending

23

Confirmed Cases

24

Recovered

24



### People + Family

Mental and physical health, financial supports, travelling, parenting, caring for others, services and safety for individuals and families.



### Travelling + Moving Around

International and domestic travel, NWT border, [self-isolation plans](#), parks, tourism operators, and long-haul trucking information.



### Child Care, School + Learning

[JK-12 back to school](#), early learning, child care, and post-secondary information and resources for students, parents, caregivers and teachers.



### Pandemic Services

Since the pandemic began, the GNWT has delivered new pandemic services to more than 20,000 residents, businesses, and workers.



### Self-Assessment + Testing

Learn about the symptoms of COVID-19, take the online self-assessment and find out how to get tested in your community.



## Business + Work

Information and resources for employers, employees, economic relief, essential and high-risk workers in the NWT.

## News

January 1, 2021

### Advisories

[Non-Resident Worker Diagnosed With COVID-19 in NWT](#)

---

January 1, 2021

### Advisories

[Non-Resident Worker Diagnosed With COVID-19 in NWT](#)

---

December 31, 2020

### News Releases

[Government of the Northwest Territories Begins COVID-19 Vaccinations](#)

---

December 31, 2020

### Public Service Announcement

[State of Emergency in the City of Yellowknife Extended](#)

---

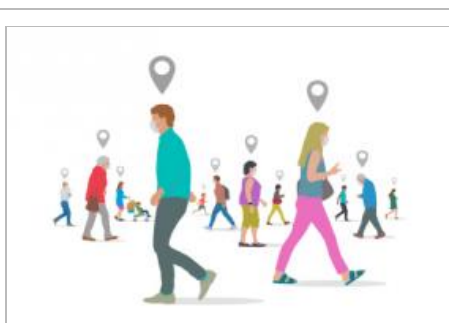
December 26, 2020

### Advisories

[Confirmed COVID-19 Diagnosis at Ekati Diamond Mine](#)

---

[More Government News](#)



[Public Exposure Notifications](#)



Protect your community.  
Download the COVID Alert  
app.

[Phone Directory](#)

[Terms of Use](#)

[Accessibility](#)

[Contact](#)

[Newsroom](#)

Government of  
Northwest Territories