

# COVID-19 IN THE CAYMAN ISLANDS

## LATEST FIGURES ON COVID-19

[Click  
Here](#)

## WORRIED YOU MIGHT HAVE COVID-19?

Start a confidential COVID-19 self-assessment.

[Click Here](#)

## LATEST ADVICE

Keep COVID-19 patient details private



Easter camping not permitted



British Airways Flight 7 April



Need support?



Stay home to Save Lives



Only leave for essentials



Self-isolate



Take care of your emotional well being



Restrict travel



POLICIES IN ACTION

Supermarket Provisions	⊕
Shelter in Place	⊕
Nightly Curfew	⊕
Social Distancing	⊕
Gatherings restricted	⊕
Non-essential operations closed	⊕
Restaurants take-out or delivery only	⊕
Public transport restricted	⊕
No international travel	⊕

► [All Policies in Action](#)

WE WORK WITH



BLOOD  
DONATIONS  
ARE  
URGENTLY  
REQUIRED

Contact the blood  
bank at the Health  
Services Authority  
Monday to Saturday,  
call [244-2674](tel:244-2674) or  
email  
[info@bloodbank.ky](mailto:info@bloodbank.ky)  
For more info visit  
[www.bloodbank.ky](http://www.bloodbank.ky)  
[Read more.](#)



## WHAT IS COVID-19?

The Coronavirus Disease (COVID-19) is an infectious disease caused by a newly discovered coronavirus, which was first identified in Wuhan City, China in 2019. The COVID-19 virus (which is called SARS-CoV-2) is a member of the coronavirus family (a group of viruses) that has never been encountered before.

## WHAT ARE THE SYMPTOMS?

The virus most commonly causes:

- ✓ coughing
- ✓ fever
- ✓ tiredness
- ✓ breathing difficulties

These symptoms are usually mild and begin gradually but commonly occur within 1-10 days after a person has been exposed.

Some people become infected but don't develop any symptoms and don't feel unwell. Around 1 out of every 6 people who gets COVID-19 becomes seriously ill and develops difficulty breathing.

## HOW DO I GET MORE INFORMATION?

This official Cayman Islands Government website includes a lot of helpful information that is constantly being updated, including a detailed explanation of the [Daytime "Soft" Curfew and Nighttime "Hard" Curfew](#) that are in place, answers to [Frequently Asked Questions](#) and details of [Policies in Action](#). We also have a list of [Hotlines](#) for critical services.

If you have medical questions, many resources are available on this website and [www.hsa.ky/coronavirus](http://www.hsa.ky/coronavirus). If you can't find what you're looking for or have a question about your specific situation, contact your General Practitioner or the 24-hour Flu Hotline on 1-800-534-8600 or 947-3077 or email [flu@hsa.ky](mailto:flu@hsa.ky). If you have a medical emergency dial 911.

If you have a non-medical question and can't find the answer on this website, contact the National Emergency Operations Centre hotline on 1-800-534-6555 or email [NEOC@gov.ky](mailto:NEOC@gov.ky).

## REGIONAL TRACKER

Get updates from the Pan American Health Organization [here](#).

## WHO SITUATION REPORTS

Get global updates from the World Health Organization [here](#).

## COVID-19 LATEST LIVE UPDATE

## ► HOUSEHOLD GUIDANCE

### HOUSEHOLD GUIDANCE



Guidance for households with possible COVID-19 infection. [Read more.](#)

## ► VULNERABLE PEOPLE

### VULNERABLE PEOPLE & THEIR FAMILIES



Information for vulnerable people at high risk and their carers. [Read more.](#)

## ► BUSINESS GUIDANCE

## BUSINESS GUIDANCE



Information on the novel coronavirus (COVID-19) including guidance for businesses. [Read more.](#)

### ► EDUCATION GUIDANCE

## EDUCATION GUIDANCE

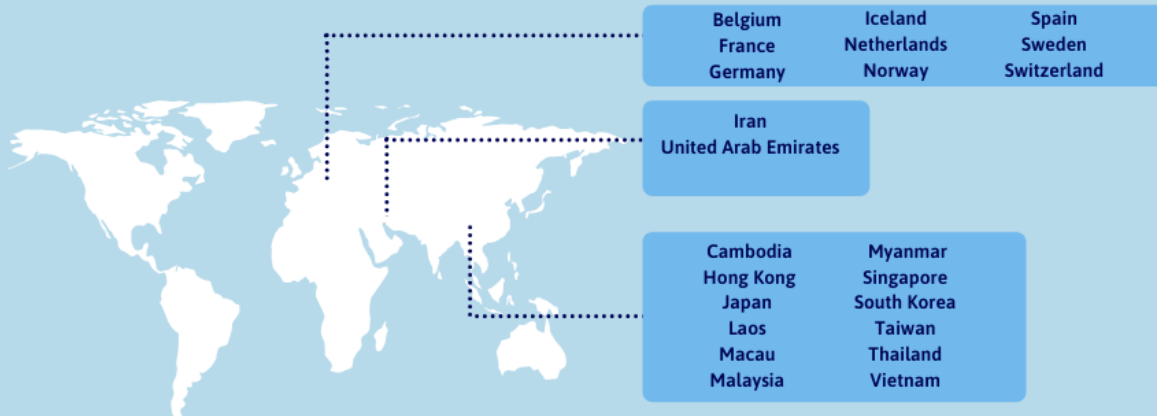


COVID-19 information for schools and other educational settings. [Read more.](#)

### ► TRAVEL ADVICE

## COVID-19 Countries on Watch

If you have returned from the below countries within the last 14 days, please contact the Public Health Department immediately if you have a cough, fever or shortness of breath on 244-2621 / 244-2561



People should avoid all but essential travel to countries where there appears to be extensive in country transmission of COVID-19. Please note, this list is subject to change as further updates are received.  
HSA.ky/Coronavirus



MINISTRY OF  
HEALTH, ENVIRONMENT,  
CULTURE & HOUSING  
CAYMAN ISLANDS GOVERNMENT



PUBLIC HEALTH DEPARTMENT  
CAYMAN ISLANDS  
Caring People. Healthy Islands.

Travel advice and restrictions from the Cayman Islands Government. [Read more.](#)

### ► MENTAL WELLBEING

## MENTAL WELLBEING



Information on maintaining your mental well-being and safety. [Read more.](#)

### ► LATEST NEWS

## LATEST NEWS



Information for the public, including on the current situation in the Cayman Islands. [Read more.](#)

### ► PUBLIC HEALTH INFO

**CATCH IT**

**WASH IT**

**TRASH IT**

**CORONAVIRUS**

An explanation of how COVID-19 is spread and how to avoid catching or spreading the virus. [Read more.](#)

### ► RESOURCES

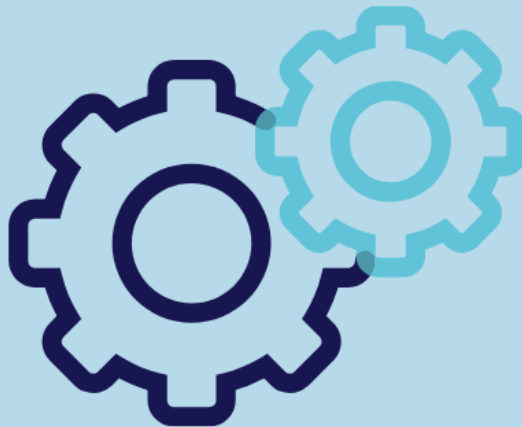
## RESOURCES



Download our graphics, videos, informational booklets and other resources on COVID-19. [Read more.](#)

### ► FRONTLINE STAFF

## FRONTLINE STAFF



Information for front-line and essential workers on COVID-19 in Cayman Islands and information on policies. [Read more.](#)

### ► POLICIES IN ACTION

## POLICIES IN ACTION



Information the public on COVID-19 policies in Cayman Islands. [Read more.](#)

### ► HOTLINES

## HOTLINES



Information the hotlines and contact details to get information and support in Cayman Islands. [Read more.](#)

## COVID-19 FAQs

### What is COVID-19?

The information and studies we are receiving on COVID-19 grow by the day, and so does the understanding. The advice from our Chief Medical Officer is that shared by national public health

agencies such as the Centers for Disease Control in the USA, Public Health England and the World Health Organization. [Read more.](#)

### What is Government doing to address COVID-19?

Here on our official website, you can find the most up to date news and information about Government's response to COVID-19. This includes [Policies in Action](#) to protect our community and save lives.

### What should I do if I think I have COVID-19?

Unless you require emergency medical care, stay home. Call your General Practitioner or the 24-hour Flu Hotline on 1-800-534-8600 or 947-3077 for advice if you are not managing. Depending on your symptoms and travel history you will most likely be advised to self-isolate at home. A member of the Health Services Authority will visit you at your home. [Read more.](#)

### What should businesses do?

The Cayman Islands Government issued advice on how businesses and commerce can prepare ahead of a potential community case. We are also keeping this website updated to reflect the latest policies and advice. [Read more.](#)

View all of our frequently asked questions on COVID-19 [here.](#)

## PREVENTION TIPS

The best way to protect yourself and others from the spread of COVID-19 is to practice these three tips:

- ✔ Catch it. Catch a cough or sneeze in a tissue. If you have nothing to use, use your elbow and not your hands.
- ✔ Bin it. Bin the tissues after use. Viruses can live for hours in tissues.
- ✔ Kill it. By avoiding close contact with those suffering from acute respiratory illness, avoiding travel if you have flu-like symptoms (or a cough or a fever) we can help kill the virus.

## CAYMAN PREPARED

Hazard Management Cayman Islands has overall responsibility for the national Comprehensive Disaster Management programme, including preparedness, response, mitigation and recovery.

HMCI is responsible for the National Emergency Operations Centre (NEOC), which is activated to direct and coordinate the response to national threats. [Read more.](#)

## PRESS ROOM

- ▶ Thursday, 2 April Government Update: 28 Cases Total in Grand Cayman, None in Sister Islands, Cabinet to Change Curfew. [Read more.](#)
- ▶ Employers' Questions for Department of Labour and Pensions Answered. [Read more.](#)
- ▶ Fishing Vessels Arriving to the Cayman Islands Required to Abide by CBC Measures for COVID-19. [Read more.](#)
- ▶ CBC Discourages Import of Non-Essential Goods At This Time. [Read more.](#)
- ▶ CBC Outlines Process to Collect Air Cargo, Will Issue Soft Curfew Exemption Letters for Specific Collection Times. [Read more.](#)
- ▶ Port Authority Encourages Cargo Collection, Will Issue Soft Curfew Exemption Letters for Specific Collection Times. [Read more.](#)
- ▶ Wednesday, 1 April Government Update: Eight New Cases of COVID-19, Economic Well Being of the Nation, Further Information on BA Flight, Call for Blood Donations. [Read more.](#)
- ▶ Important Advice on Homemade Face Masks From the Ministry of Health. [Read more.](#)
- ▶ The Offices of the Ministry of Education, Youth, Sports, Agriculture & Lands Operates Remotely, Accepting Email Inquires for Key Services. [Read more.](#)
- ▶ Postal Service Suspends Service to the Public, All Post Offices Closed. [Read more.](#)
- ▶ Tuesday, 31 March Government Update. [Read more.](#)
- ▶ [Read all news](#)

## NEWS FROM AROUND THE WEB



How A Little Island In The Caribbean Sea Is Standing Up To The Goliath Of Coronavirus  
forbes.com

CAYMAN ISLANDS HEALTH SERVICES AUTHORITY (HSA)

[Learn more](#)

USA CENTERS FOR DISEASE CONTROL & PROTECTION (CDC)

[Learn more](#)

PUBLIC HEALTH ENGLAND (PHE)

[Learn more](#)

WORLD HEALTH ORGANIZATION (WHO)

[Learn more](#)

CARIBBEAN PUBLIC HEALTH AGENCY (CARPHA)

[Learn more](#)

















































































































































































































































GIVE US YOUR  
FEEDBACK

Cayman Islands Government, Government Admin Building, Grand Cayman, Cayman Islands, Tel: [345 949 7900](tel:3459497900)



CAYMAN ISLANDS  
GOVERNMENT