

As at 4pm on 25 June 2020, in the Isle of Man there have been:

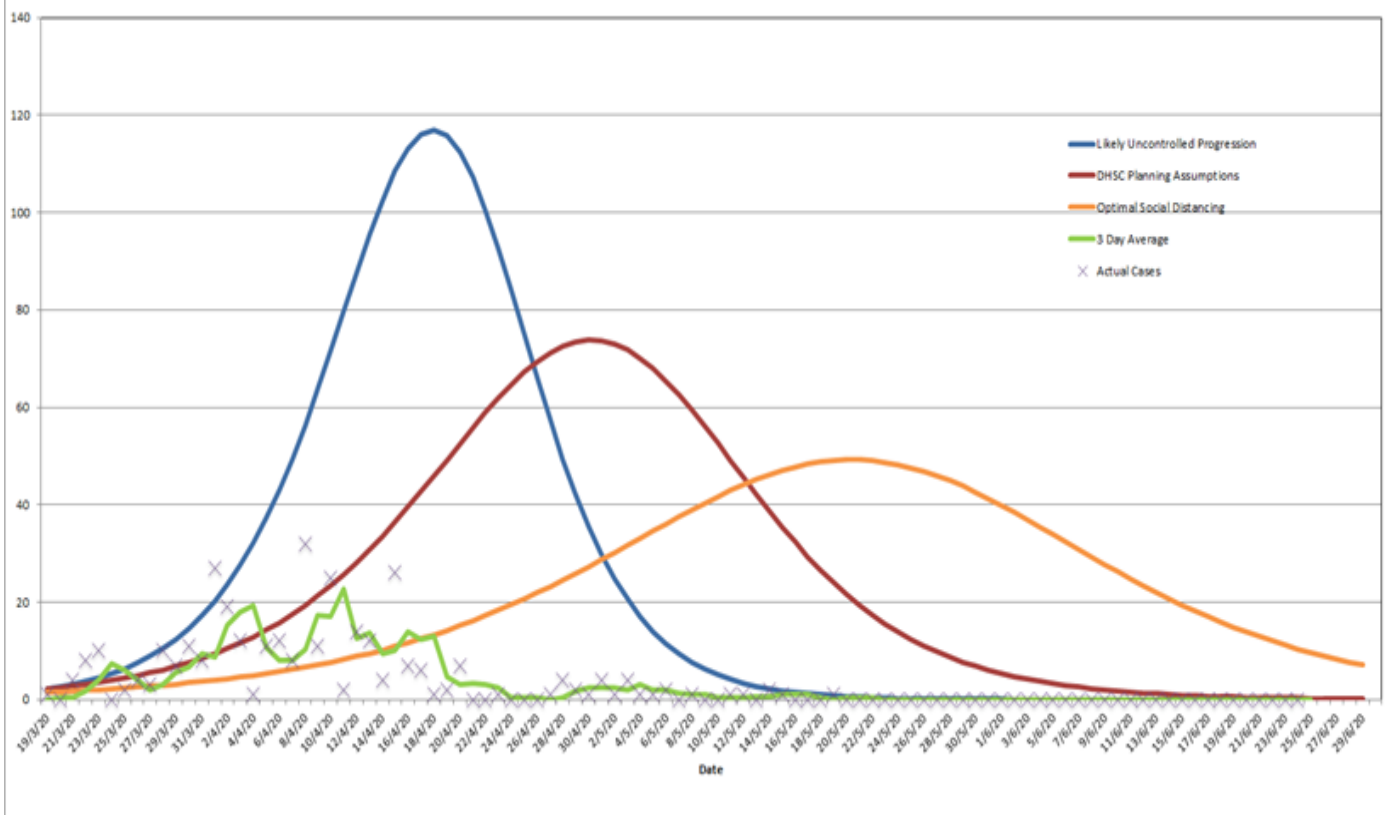
Confirmed cases	Hospital admissions
336	0
Total tests	Concluded tests
6209	6196
Awaiting results	Awaiting tests
13	0
Number of deaths	Total active cases (community and hospital)
24	0
Number of deaths in hospital	Number of deaths in the community
6	18

This information is also [available as open data](#).

Daily confirmed cases

As at 4pm on 25 June 2020

Daily Confirmed Cases



 Likely uncontrolled progression

 DHSC planning assumptions

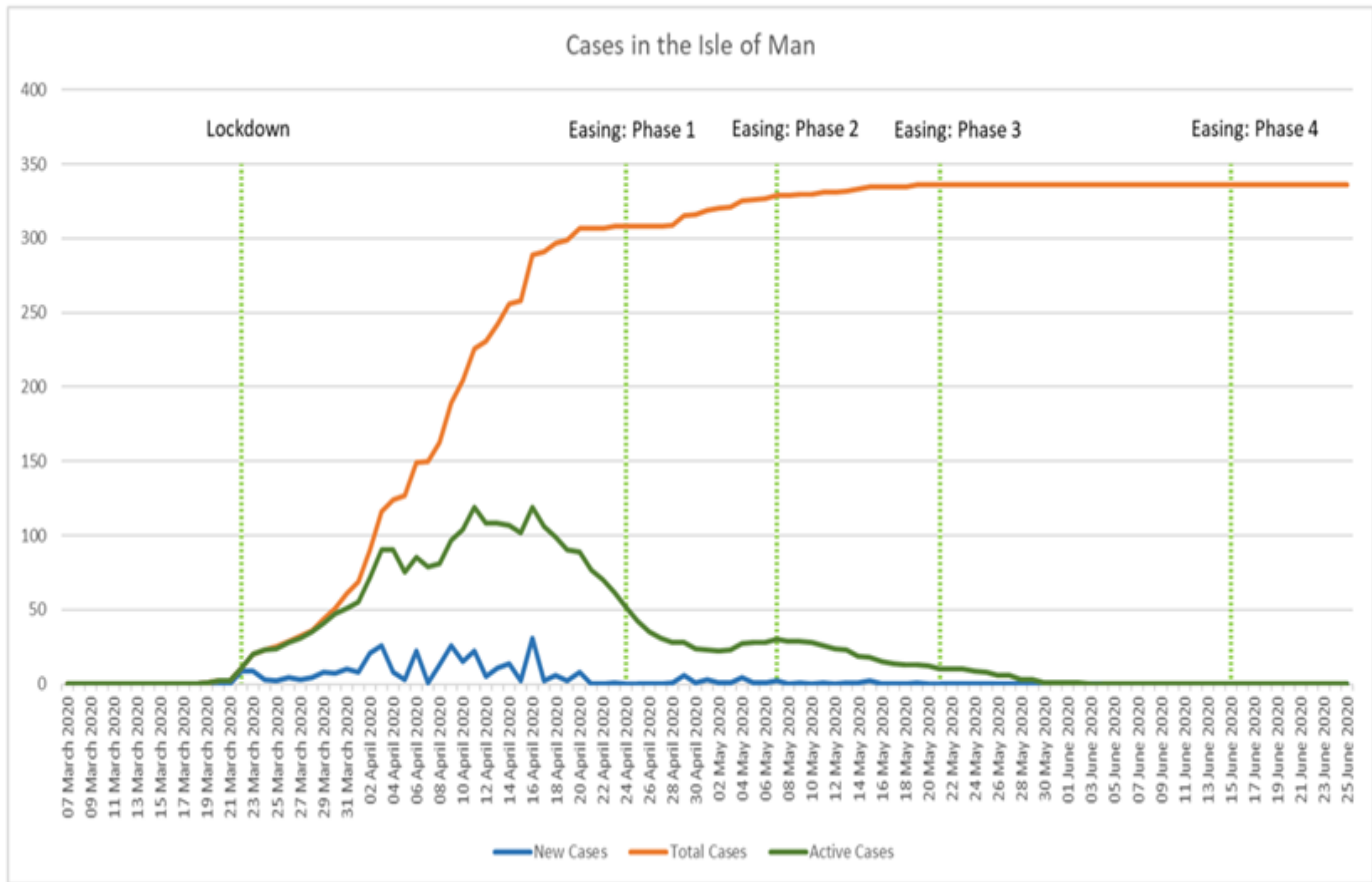
 Optimal social distancing

 Three day average

 Actual cases

The graph shows the daily confirmed cases and the projected infection rates for a best case scenario compared to a likely uncontrolled progression.

Cases in the Isle of Man



New cases

Total cases

Active cases

The above chart shows active cases, new cases and total confirmed cases in the Isle of Man from the start of the coronavirus pandemic and how the Island is progressing through each phase of the [stay safe roadmap](#).

Borders (all ports)

Closed to everyone from Friday 6 am on 27 March 2020 (except key workers, subject to prior approval; Isle of Man residents returning from overseas; Isle of Man residents returning to the Island after leaving to see immediate family for compassionate reasons, for example end of life or to attend a funeral; and non-Island residents who wish to travel to the Isle of Man on compassionate grounds, either to attend the funeral of a close family member or to visit a terminally ill close family relative.

People may leave the Island if they wish; however it may be difficult to return unless they meet the eligibility criteria for [current repatriation schemes](#).

See: [Travel advice](#)

Businesses

Any legal requirement for social distancing in our community was removed on 15 June. Businesses are no longer legally required to take steps in relation to social distancing, such as encouraging employees to work from home, or limiting the number of customers in shops.

COVID-19 will remain a risk for some time and you must manage this risk in the same way you would manage any other risk to your staff or customers, in line with Health & Safety legislation. You may wish to continue to implement some enhanced hygiene and social distancing measures should this be deemed an appropriate and proportionate way to manage risks.

See: [New guidance for businesses](#)

Freight and supplies

Continuing as normal

Gatherings & social events

Any legal requirement for social distancing in our community and restrictions on gatherings have now been removed.

See: [Gatherings and freedom of movement](#)

Hospitals

Visiting restricted.

See: [DHSC hospitals and care homes visiting policy](#)

In an emergency

Call 999

Public transport

Currently operating.

See: [Public transport](#)

Schools

All school sites are reopen for voluntary attendance, all those children who were being taught in hubs are now be able to return to their normal school.

See also: [Schools and nurseries](#)

Self-isolation requirements

All new arrivals must self-isolate for 14 days.

Anyone showing symptoms of coronavirus must self-isolate for 14 days.

Anyone who does not have symptoms of coronavirus but is living with someone who does must self-isolate for 14 days. They can only leave their house to exercise. See more about Self-isolation.

See also: Managing household waste

Shops (non-essential suppliers)

Any legal requirement for social distancing in our community was removed on 15 June. Businesses are no longer legally required to take steps in relation to social distancing, such as encouraging employees to work from home, or limiting the number of customers in shops.

See: New guidance for businesses

Construction and trades

Construction, trades and horticulture are now able to return to work.

Social distancing

Any legal requirement for social distancing in our community has now been removed.

Social distancing and PPE requirements will however be maintained in health and care environments.

Stay home and stay safe requirement

It is no longer a legal requirement to social distance, however it will be for you to decide where you are comfortable being and who you are comfortable being with. If you do want to keep people at an arm's length for the time being then that is for you to decide.

Symptoms and testing

Use online assessment tool or call 111

Isle of Man repatriation

Compassionate return to the Island

Compassionate application for UK residents

People wishing to move to the Isle of Man

Social distancing

Self-isolation

Advice for dog and other pet owners

Advice for keepers of stock

Birth & death registrations

Childcare

Eviction rights

Gatherings and freedom of movement

Guidance on face masks

Importation of horses to the Island during COVID-19

Income tax returns

Local food and produce delivery services

Managing household waste

Personal finance

Public transport

Schools and nurseries

University students' belongings in the UK

Latest statement

Chief Minister's statement on COVID-19 - 22 June 2020

Latest from Twitter:

Isle of Man Government
Cabinet Office
Third Floor
Government Office
Bucks Road
Douglas
IM1 3PN



COVID-19 Legislation & guidance

[Emergency Powers Statutory Documents](#)

[Guidance Documents](#)

[COVID-19 Medium-term Response Document](#)

Open data & key indicators

[Open data & key indicators downloads](#)

Privacy

[Privacy notice](#)