



Isle of Man Government

Reiltys Ellan Vannin

Coronavirus COVID-19



Latest updates



As at 4pm on 19 August 2020, in the Isle of Man there have been:

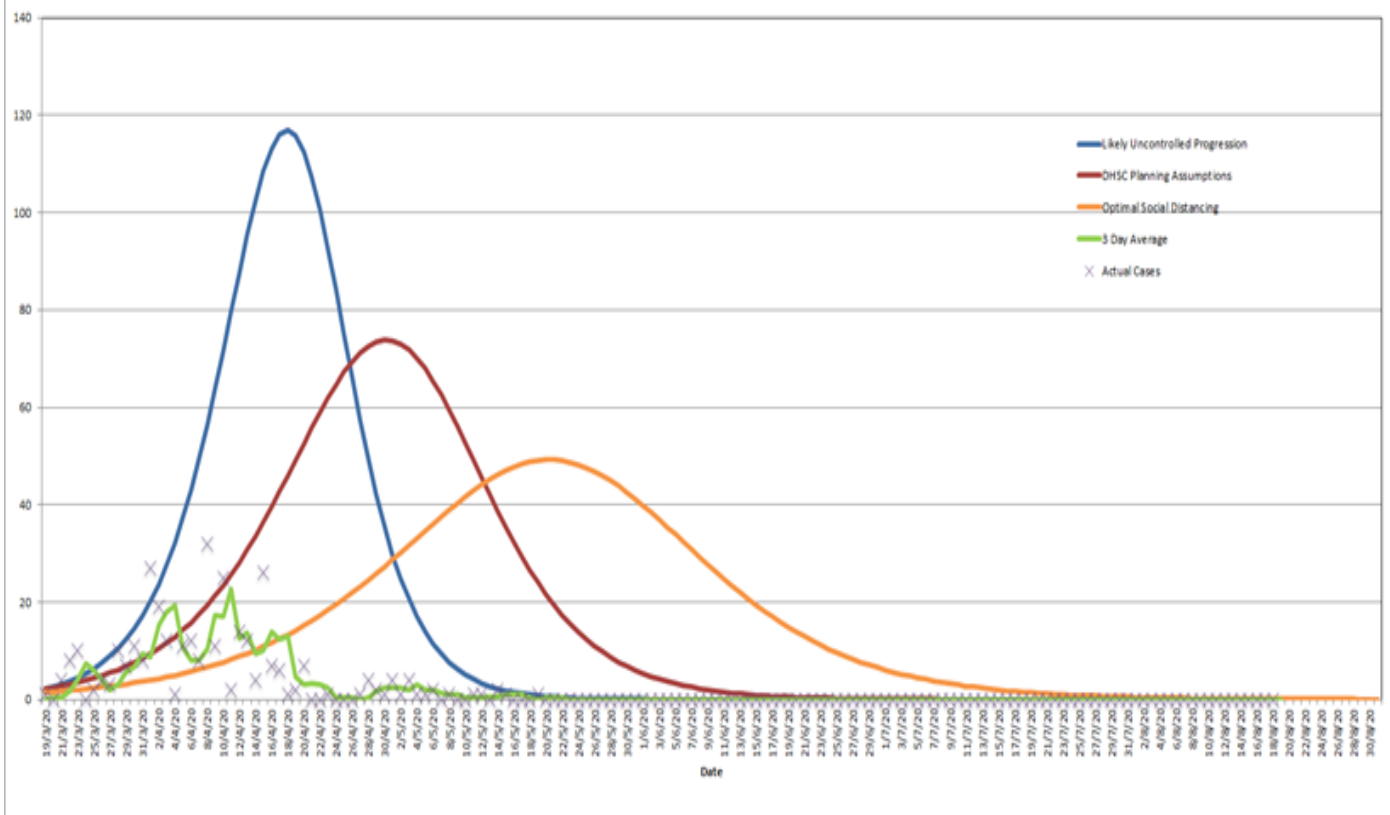
Confirmed cases	Hospital admissions
336	0
Total tests	Concluded tests
9385	9368
Awaiting results	Awaiting tests
17	13
Number of deaths	Total active cases (community and hospital)
24	0
Number of deaths in hospital	Number of deaths in the community
6	18

This information is also [available as open data](#).

Daily confirmed cases

As at 4pm on 19 August 2020

Daily Confirmed Cases



 Likely uncontrolled progression

 DHSC planning assumptions

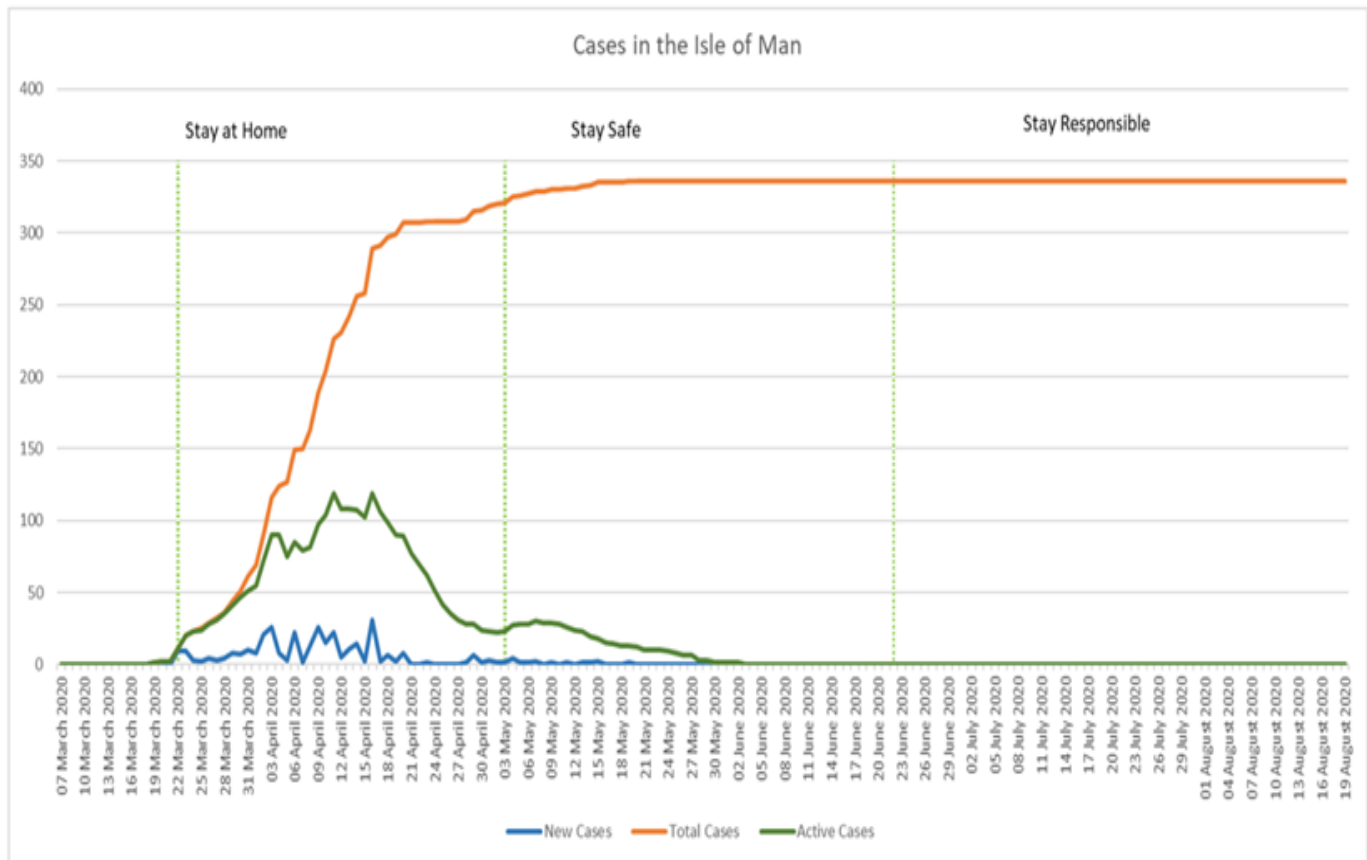
 Optimal social distancing

 Three day average

 Actual cases

The graph shows the daily confirmed cases and the projected infection rates for a best case scenario compared to a likely uncontrolled progression.

Cases in the Isle of Man



 New cases

 Total cases

 Active cases

The above chart shows active cases, new cases and total confirmed cases in the Isle of Man from the start of the coronavirus pandemic and how the Island is progressing through each phase.

Borders (all ports)

Update 25 June 2020: The governments of the Isle of Man and Guernsey have agreed to form an air bridge allowing travel between the jurisdictions without the need for self-isolating on arrival.

Closed to everyone from Friday 6 am on 27 March 2020 (except key workers, subject to prior approval; Isle of Man residents returning from overseas; Isle of Man residents returning to the Island after leaving to see immediate family for compassionate reasons, for example end of life or to attend a funeral; and non-Island residents who wish to travel to the Isle of Man on compassionate grounds, either to attend the funeral of a close family member or to visit a terminally ill close family relative.

People may leave the Island if they wish; however it may be difficult to return unless they meet the eligibility criteria for current repatriation schemes.

See: [Travel advice](#)

Businesses

Any legal requirement for social distancing in our community was removed on 15 June. Businesses are no longer legally required to take steps in relation to social distancing, such as encouraging employees to work from home, or limiting the number of customers in shops.

COVID-19 will remain a risk for some time and you must manage this risk in the same way you would manage any other risk to your staff or customers, in line with Health & Safety legislation. You may wish to continue to implement some enhanced hygiene and social distancing measures should this be deemed an appropriate and proportionate way to manage risks.

See: [New guidance for businesses](#)

Hospitals

Visiting restricted.

See: [Visiting Policy](#)

Schools

All school sites are reopen for voluntary attendance, all those children who were being taught in hubs are now be able to return to their normal school.

See also: [Schools and nurseries](#)

[Guernsey air bridge](#)

[Application forms and landing forms](#)

[Isle of Man resident registration](#)

[Advice for returning travellers](#)

[Compassionate application for UK residents](#)

[People wishing to move to the Isle of Man](#)

[Social distancing](#)

[Self-isolation](#)

[Eviction rights](#)

[Gatherings and freedom of movement](#)

[Guidance on face masks](#)

[Local food and produce delivery services](#)

[Managing household waste](#)

[Personal finance](#)

[Private vessels and aircrafts](#)

[Schools and nurseries](#)

[University students' belongings in the UK](#)

[Charities that can help](#)

[Contact numbers](#)

[Back to care](#)

Latest statement

Chief Minister's statement on COVID-19 - 30 July 2020

Latest from Twitter:

Isle of Man Government
Cabinet Office
Third Floor
Government Office
Bucks Road
Douglas
IM1 3PN



COVID-19 Legislation & guidance

[Emergency Powers Statutory Documents](#)

[Guidance Documents](#)

[COVID-19 Medium-term Response Document](#)

Open data & key indicators

[Open data & key indicators downloads](#)

Privacy

[Privacy notice](#)