



Press Releases

COVID-19 Clinical Management Summary For Tuesday, September 15, 2020

NEW CASES 24 HRS OVERALL NOTES Confirmed Cases 122 4,164 SEX CLASSIFICATION Males 66 1,870
Females 56 2,281 Under Investigation 0 13 AGE RANGE 11 months to 88 years 13 days to 97 years PARISH
CLASSIFICATION OF NEW...

[Read More](#)

September 16th, 2020

COVID-19 Update for Monday, September 14, 2020

NEW CASES 24 HRS OVERALL COMMENTS Confirmed Cases 109 4,042 SEX CLASSIFICATION Males 45
1,805 Females 64 2,224 Under Investigation 0 13 AGE RANGE 5 to 87 years 13 days to 97 years PARISH
CLASSIFICATION OF NEW...

[Read More](#)

September 15th, 2020

COVID-19 Clinical Management Summary For Sunday, September 13, 2020

NEW CASES 24 HRS OVERALL NOTES Confirmed Cases 162 3,933 SEX CLASSIFICATION Males 70 1,759
Females 91 2,156 Under Investigation 1 18 AGE RANGE 2 to 89 years 13 days to 97 years PARISH
CLASSIFICATION OF NEW...

[Read More](#)

September 14th, 2020

COVID-19 Clinical Management Summary for Saturday, September 12, 2020

NEW CASES 24 HRS OVERALL NOTES Confirmed Cases 148 3,771 SEX CLASSIFICATION Males 64 1,668
Females 77 2,048 Under Investigation 7 55 AGE RANGE 1 to 77 years 13 days to 97 years PARISH
CLASSIFICATION OF NEW CASES Kingston...

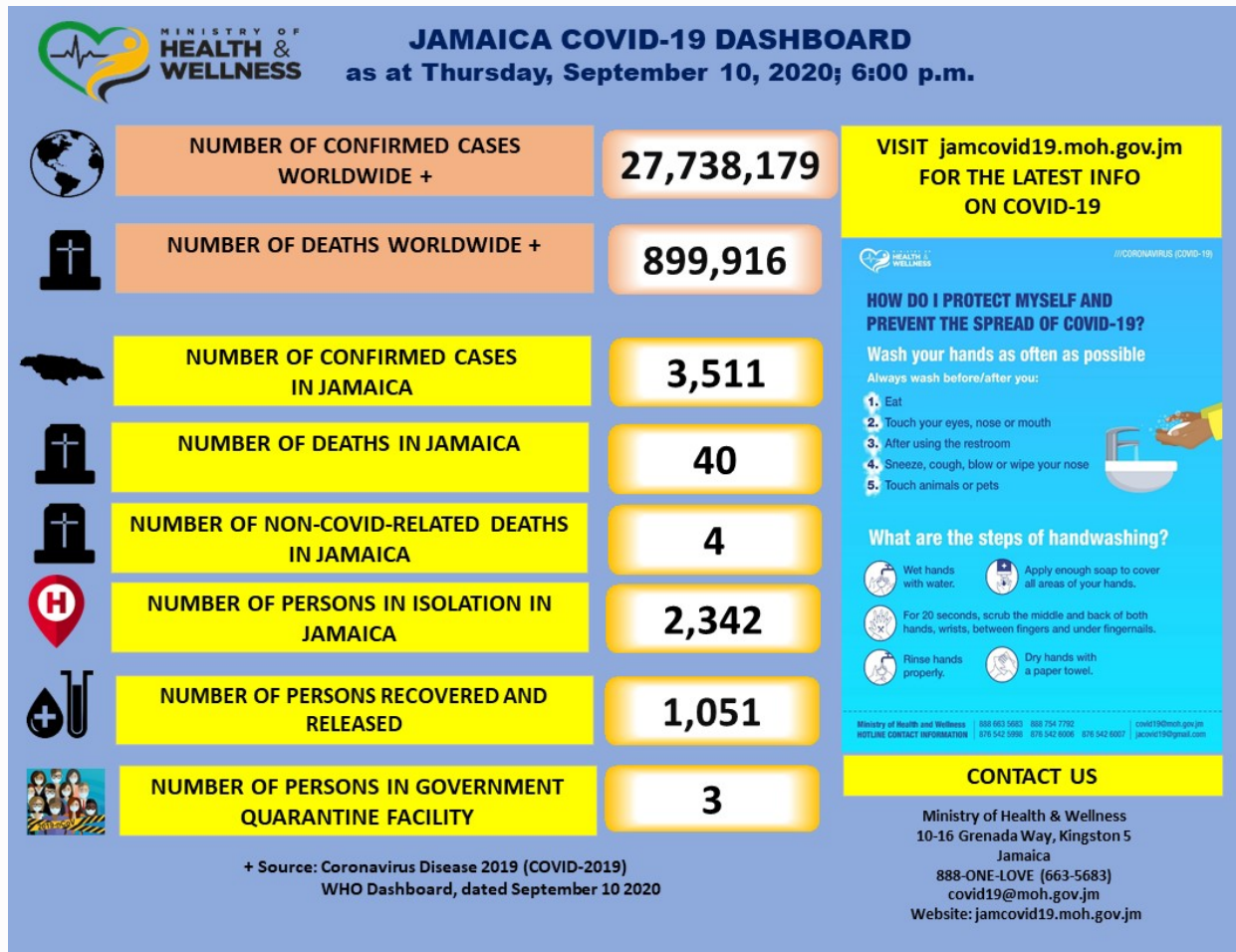
[Read More](#)

September 13th, 2020

COVID-19 Clinical Management Summary for Friday, September 11, 2020

NEW CASES 24 HRS OVERALL Confirmed Cases 112 3,623 SEX CLASSIFICATION Males 27 1,971 Females 40
1,604 Under Investigation 45 48 AGE RANGE 15 to 95 years 13 days to 97 years PARISH CLASSIFICATION OF
NEW CASES Kingston & St. Andrew ...

Jamaica records Two COVID-19 deaths, 74 new positives



Regrettably, the Ministry of Health and Wellness confirms two new COVID-19 related deaths. The deceased are a 90-year-old male of a Kingston & St. Andrew address and a 34-year-old female of a St James address, who’s death previously reported as under investigation. Both also had comorbidities and we express condolences...

[Read More](#)

Jamaica records Two COVID-19 deaths, 114 new positives

Regrettably, the Ministry of Health & Wellness confirms two new COVID-19-related deaths. The deceased are an 80 year old female and a 12 year old male, who both had comorbidities and are both from Manchester. The Ministry extends its deepest condolences to the families of the deceased. The total number...

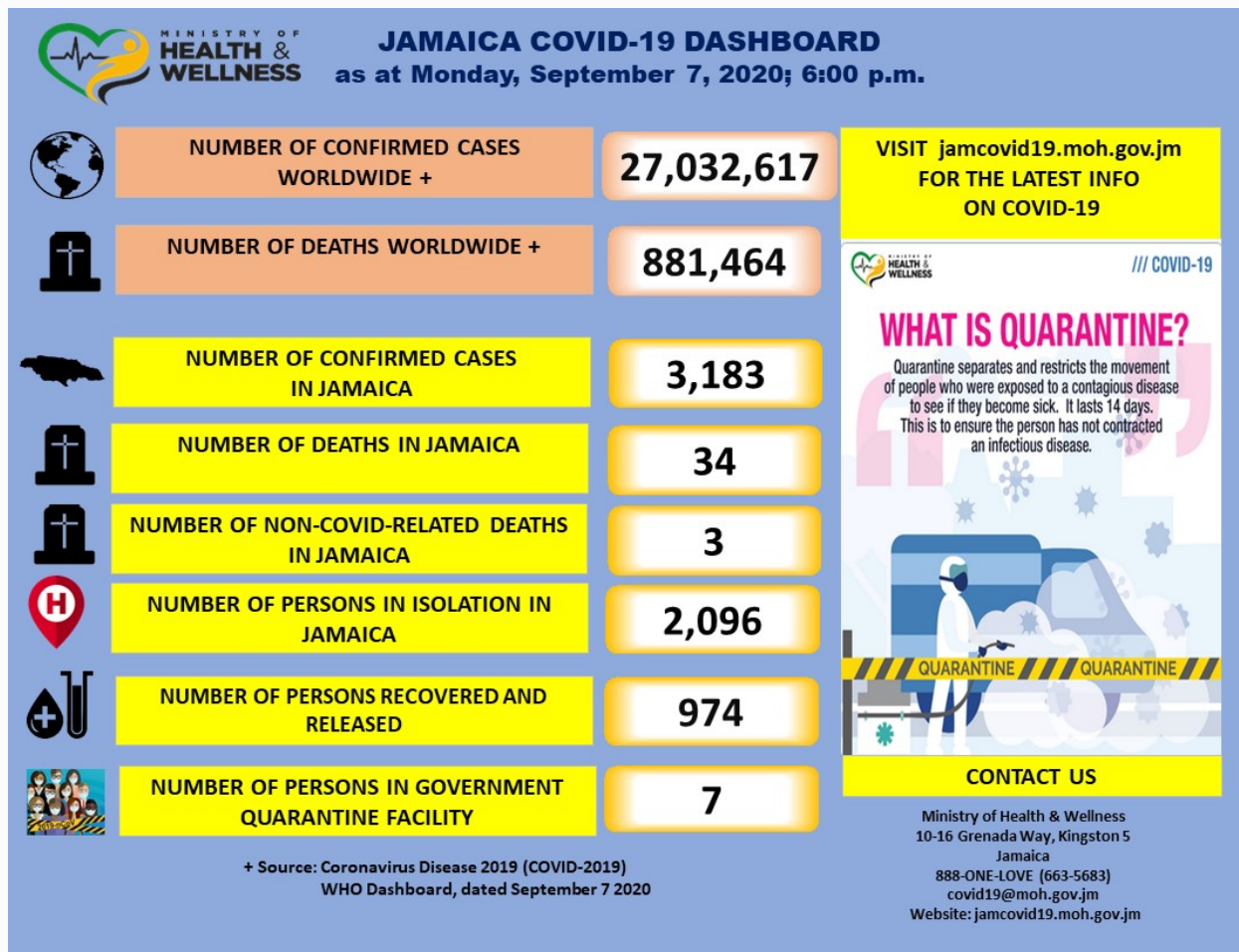
[Read More](#)

Jamaica records 2 more COVID-19 deaths, 140 new cases

It is with regret that the Ministry of Health and Wellness reports the passing of two more persons due to COVID-19. The two cases were formerly under investigation. Also in the last 24 hours, the island recorded 140 new positives. One of the COVID-19 deaths is a 77-year-old female from...

[Read More](#)

COVID-19 Update: Jamaica now at 3,183 Confirmed Cases



Regrettably, the Ministry of Health & Wellness confirms one new COVID-19 related death. The deceased is an 83-year-old female, who was suffered from hypertension and diabetes. She was from a Manchester address. The total number of deaths from COVID-19 is now 34. (1.1%). Three additional cases were coincidental death of...

[Read More](#)

September 7th, 2020

COVID-19 Update: One More Death, 79 New Cases Recorded

8 More Recoveries Regrettably, the Ministry of Health & Wellness confirms one new COVID-19-related death. The deceased is a 54 year old male from St. James. The total number of deaths now stand at 33 (1.1%), while five more deaths in COVID-19 positive individuals are under investigation. In the last...

[Read More](#)

September 6th, 2020

MINISTER'S PRESENTATIONS

© Thursday September 10, 2020

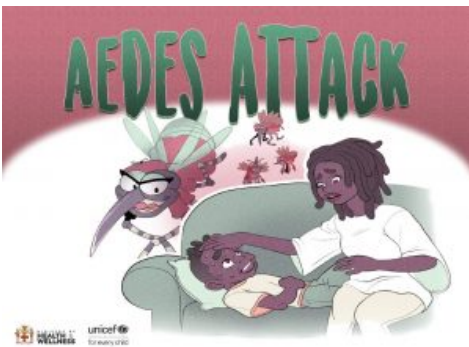
Message of the Minister of Health & Wellness Dr. The Hon. Christopher Tufton World Suicide Prevention Day – “Working Together to Prevent Suicide”



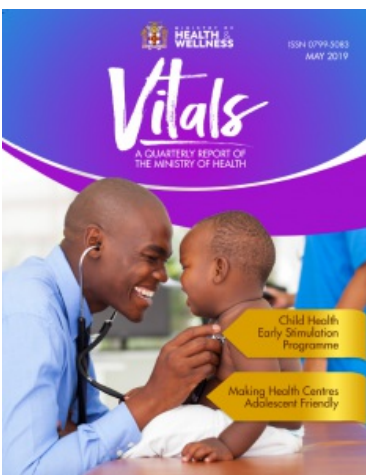
All Presentations ↗

PUBLICATIONS

Aedes Attack



Vitals – A Quarterly Report of the Ministry of Health (May 2019)



Vision for Health 2030 – Ten Year Strategic Plan 2019 – 2030



Green Paper on National Health Insurance Plan for Jamaica



All Publications [↗](#)



BEVERAGE FOR SCHOOLS REGISTRATION

“PHARMWATCH”

DRUG MONITORING FORM

COVID-19 SELF REPORT

Complete a COVID-19 self assessment.



VIDEO FEATURE

LOCATION OF HOSPITALS AND HEALTH CENTRES



[View Interactive Map](#)

PUBLIC EDUCATION RESOURCES

Ebola Awareness February 2015

What is Ebola Virus Disease? Ebola Virus Disease (formerly known as Ebola Haemorrhagic Fever) is a severe, often fatal illness, with a death rate of about 25% to 90%. Ebola is not a new disease, but appeared in 1976 in two simultaneous outbreaks in the Democratic Republic of Congo and in Sudan. What are...

[Read More](#)

Human Papillomavirus (HPV) Vaccine Information



HPV Human papillomaviruses (HPV) are a very common group of viruses that infect epithelial tissue. More than 200 HPV types have been identified. At least 14 types of HPV have been found to cause cancer and 70% of all cervical cancers are caused by HPV types 16 and 18. HPV...

[Read More](#)

[All Public Education Resources](#) ↗

WEEKLY SURVEILLANCE BULLETIN

> [Weekly Bulletin EW 35 2020](#)

> [Weekly Bulletin EW 34 2020](#)

[All Bulletins](#) ↗

MINISTRY OF HEALTH & WELLNESS



REGIONAL AUTHORITIES

[Southern Regional Health Authority](#)

[Southeast Regional Health Authority](#)

[Northeast Regional Health Authority](#)

[Western Regional Health Authority](#)

SITEMAP

[Home](#)

[Programmes & Policies](#)

[Media Centre](#)

[Divisions, Units & Agencies](#)

[Councils](#)

[Leadership](#)

[About Us](#)

[Contact Us](#)

RESOURCES

[Mental Health Clinic Schedules](#)

[Physical Activity Bible](#)

[Patient Transfer Manual](#)

[Annual Reports](#)

[Statistics](#)

[Guidelines](#)

[Forms](#)

[Staff Orders for the Public Service](#)

SECIN

HINARI

List of Vital Drugs and Medical Sundries for Public Health Institutions

Regional Health Authorities' Conformance Reports

Regional Health Authorities' Audit Reports

Public Sector Customer Service Satisfaction Assessment Report

COVID-19 Resources and Protocols

Protocol for the Nutritional Management of Non-communicable Diseases in Jamaica

MOHW Guidelines for the importation of Human Remains

Guide for the Promotion of Healthy Eating in Workplaces

Tool for Assessing the Nutrition Environment in Workplaces

Interim Guidelines For Beverages In Schools

MOHW Islandwide Schedule – Adolescent Health Clinic

HELP & SERVICES

[Vacancies](#)

[Feedback](#)

[Privacy Policy](#)

[Contact Us](#)

LINKS

[Government of Jamaica](#)

[Jamaica Diaspora Connect](#)

[Ministry of Justice](#)

[Virtual Reference Service](#)

[CARPHA Evidence Portal](#)

[VHL Regional Portal](#)

[Virtual Health Library](#)

[COVID-19 Medical Portal from EBSCO](#)