



Press Releases

COVID-19 Clinical Management Summary For Tuesday, September 15, 2020

NEW CASES 24 HRS OVERALL NOTES Confirmed Cases 122 4,164 SEX CLASSIFICATION Males 66 1,870
Females 56 2,281 Under Investigation 0 13 AGE RANGE 11 months to 88 years 13 days to 97 years PARISH
CLASSIFICATION OF NEW...

[Read More](#)

September 16th, 2020

COVID-19 Update for Monday, September 14, 2020

NEW CASES 24 HRS OVERALL COMMENTS Confirmed Cases 109 4,042 SEX CLASSIFICATION Males 45
1,805 Females 64 2,224 Under Investigation 0 13 AGE RANGE 5 to 87 years 13 days to 97 years PARISH
CLASSIFICATION OF NEW...

[Read More](#)

September 15th, 2020

COVID-19 Clinical Management Summary For Sunday, September 13, 2020

NEW CASES 24 HRS OVERALL NOTES Confirmed Cases 162 3,933 SEX CLASSIFICATION Males 70 1,759
Females 91 2,156 Under Investigation 1 18 AGE RANGE 2 to 89 years 13 days to 97 years PARISH
CLASSIFICATION OF NEW...

[Read More](#)

September 14th, 2020

COVID-19 Clinical Management Summary for Saturday, September 12, 2020

NEW CASES 24 HRS OVERALL NOTES Confirmed Cases 148 3,771 SEX CLASSIFICATION Males 64 1,668
Females 77 2,048 Under Investigation 7 55 AGE RANGE 1 to 77 years 13 days to 97 years PARISH
CLASSIFICATION OF NEW CASES Kingston...

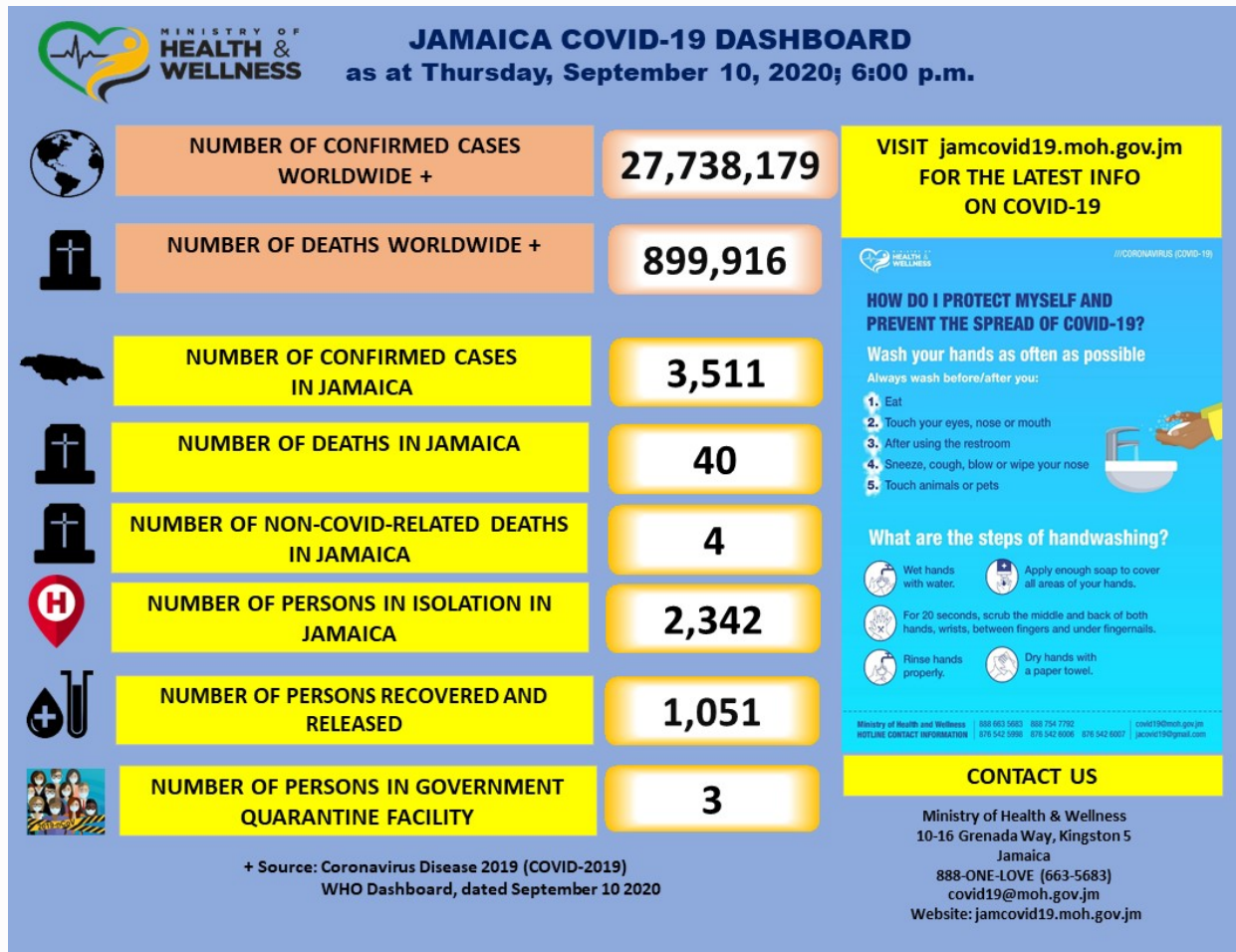
[Read More](#)

September 13th, 2020

COVID-19 Clinical Management Summary for Friday, September 11, 2020

NEW CASES 24 HRS OVERALL Confirmed Cases 112 3,623 SEX CLASSIFICATION Males 27 1,971 Females 40
1,604 Under Investigation 45 48 AGE RANGE 15 to 95 years 13 days to 97 years PARISH CLASSIFICATION OF
NEW CASES Kingston & St. Andrew ...

Jamaica records Two COVID-19 deaths, 74 new positives



Regrettably, the Ministry of Health and Wellness confirms two new COVID-19 related deaths. The deceased are a 90-year-old male of a Kingston & St. Andrew address and a 34-year-old female of a St James address, who’s death previously reported as under investigation. Both also had comorbidities and we express condolences...

[Read More](#)

Jamaica records Two COVID-19 deaths, 114 new positives

Regrettably, the Ministry of Health & Wellness confirms two new COVID-19-related deaths. The deceased are an 80 year old female and a 12 year old male, who both had comorbidities and are both from Manchester. The Ministry extends its deepest condolences to the families of the deceased. The total number...

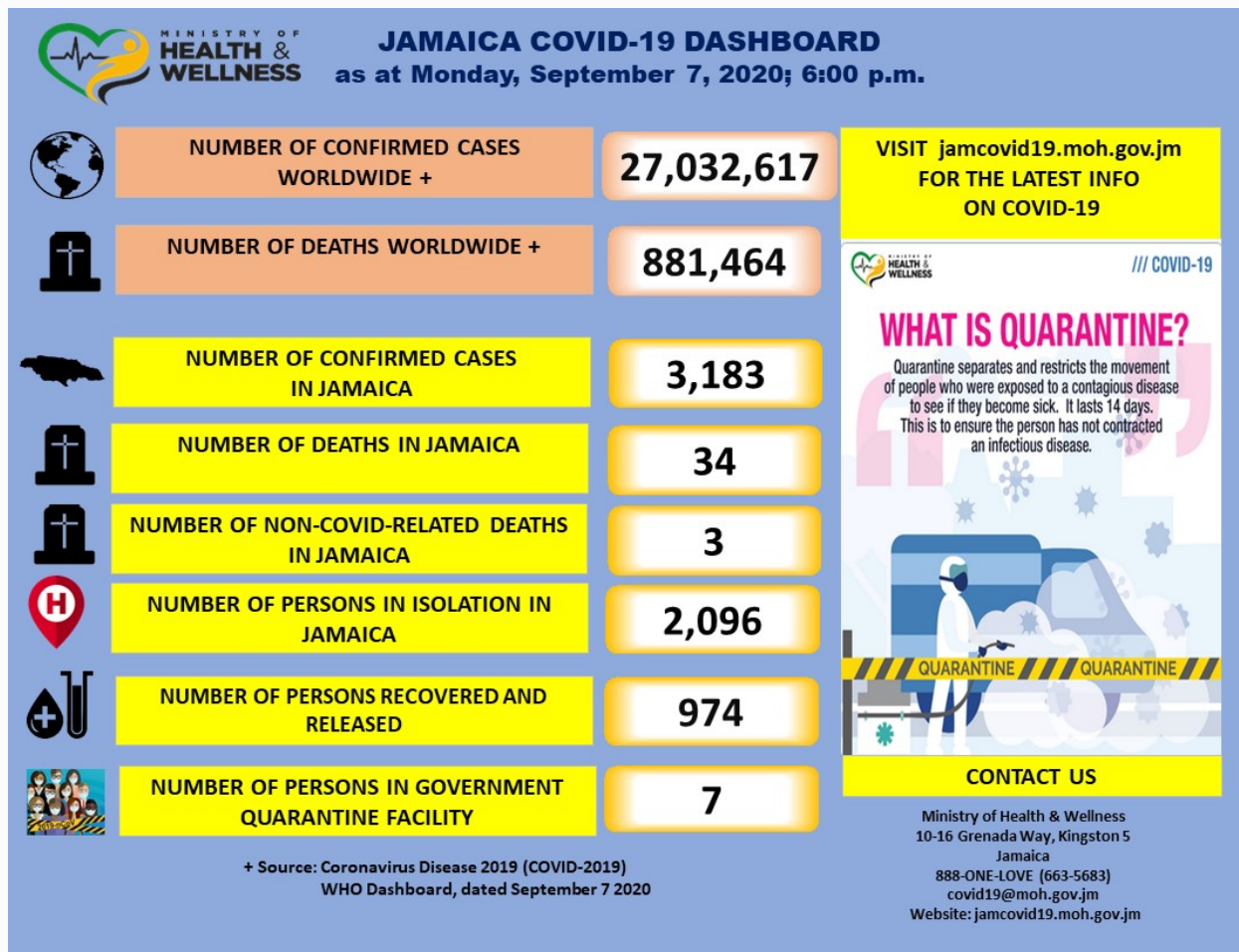
[Read More](#)

Jamaica records 2 more COVID-19 deaths, 140 new cases

It is with regret that the Ministry of Health and Wellness reports the passing of two more persons due to COVID-19. The two cases were formerly under investigation. Also in the last 24 hours, the island recorded 140 new positives. One of the COVID-19 deaths is a 77-year-old female from...

[Read More](#)

COVID-19 Update: Jamaica now at 3,183 Confirmed Cases



Regrettably, the Ministry of Health & Wellness confirms one new COVID-19 related death. The deceased is an 83-year-old female, who was suffered from hypertension and diabetes. She was from a Manchester address. The total number of deaths from COVID-19 is now 34. (1.1%). Three additional cases were coincidental death of...

[Read More](#)

September 7th, 2020

COVID-19 Update: One More Death, 79 New Cases Recorded

8 More Recoveries Regrettably, the Ministry of Health & Wellness confirms one new COVID-19-related death. The deceased is a 54 year old male from St. James. The total number of deaths now stand at 33 (1.1%), while five more deaths in COVID-19 positive individuals are under investigation. In the last...

[Read More](#)

September 6th, 2020

MINISTER'S PRESENTATIONS

© Thursday September 10, 2020

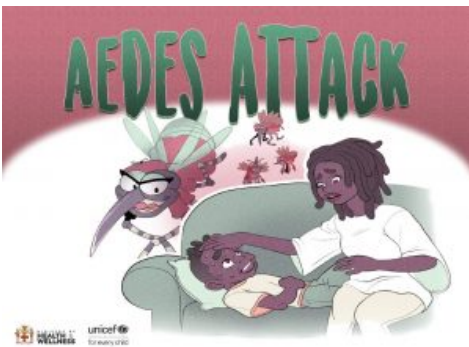
Message of the Minister of Health & Wellness Dr. The Hon. Christopher Tufton World Suicide Prevention Day – “Working Together to Prevent Suicide”



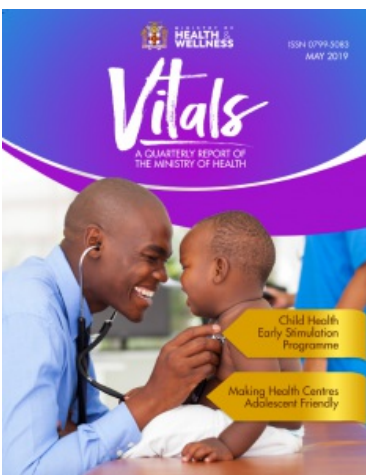
All Presentations ↗

PUBLICATIONS

Aedes Attack



Vitals – A Quarterly Report of the Ministry of Health (May 2019)



Vision for Health 2030 – Ten Year Strategic Plan 2019 – 2030



Green Paper on National Health Insurance Plan for Jamaica



All Publications [↻](#)



BEVERAGE FOR SCHOOLS REGISTRATION

“PHARMWATCH”

DRUG MONITORING FORM

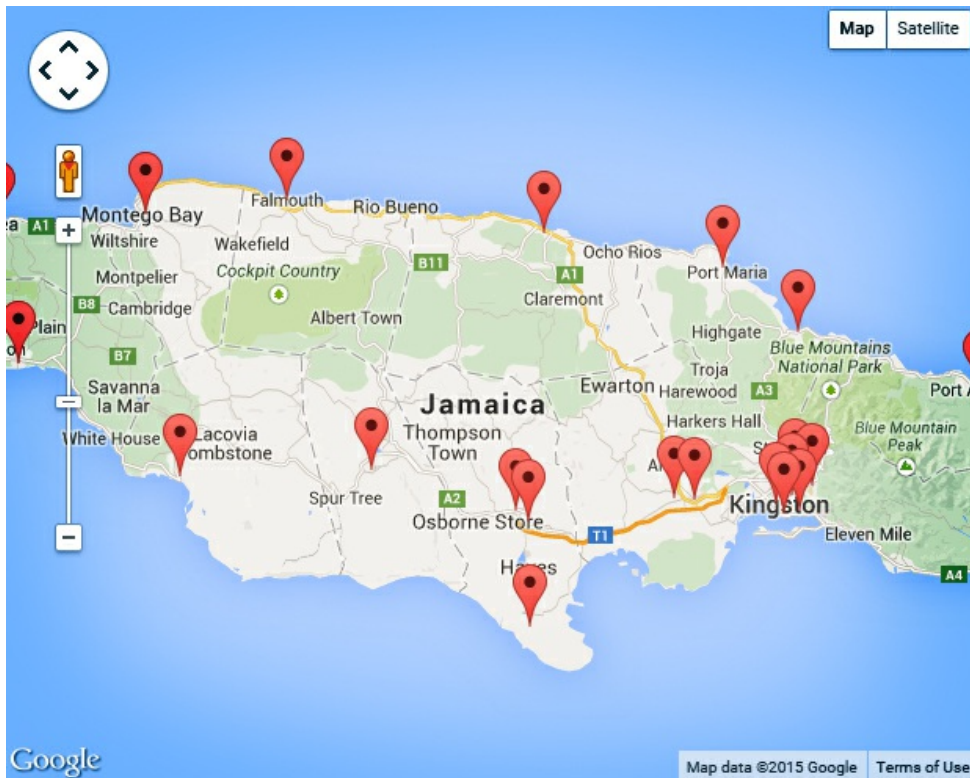
COVID-19 SELF REPORT

Complete a COVID-19 self assessment.



VIDEO FEATURE

LOCATION OF HOSPITALS AND HEALTH CENTRES



[View Interactive Map](#)

PUBLIC EDUCATION RESOURCES

Human Papilloma Virus (HPV) Vaccine

What is the HPV vaccine? The HPV vaccine is an injection available to protect against the most common types of HPV infections which causes cervical cancer. The HPV vaccines are generally recommended for girls 9-13 of age, with all 3 doses given within a six month period based on the...

[Read More](#)

Wash Hands Regularly



Wash your hands as often as possible to prevent the spread of diseases. Germs can spread easily from person to person and make you sick. During the day, we may touch books, door knobs, tables, toys and other items that may contain germs. You must always wash your hands: Before...

[Read More](#)

WEEKLY SURVEILLANCE BULLETIN

➤ [Weekly Bulletin EW 35 2020](#)

➤ [Weekly Bulletin EW 34 2020](#)

All Bulletins ↗

MINISTRY OF HEALTH & WELLNESS



REGIONAL AUTHORITIES

Southern Regional Health Authority
Southeast Regional Health Authority
Northeast Regional Health Authority
Western Regional Health Authority

SITEMAP

Home
Programmes & Policies
Media Centre
Divisions, Units & Agencies
Councils
Leadership
About Us
Contact Us

RESOURCES

Mental Health Clinic Schedules
Physical Activity Bible
Patient Transfer Manual
Annual Reports
Statistics
Guidelines
Forms
Staff Orders for the Public Service
Ministry of Health's Strategic Business Plan (2015-2018)
SECIN
HINARI
List of Vital Drugs and Medical Sundries for Public Health Institutions

Regional Health Authorities' Conformance Reports
Regional Health Authorities' Audit Reports
Public Sector Customer Service Satisfaction Assessment Report
COVID-19 Resources and Protocols
Protocol for the Nutritional Management of Non-communicable Diseases in Jamaica
MOHW Guidelines for the importation of Human Remains
Guide for the Promotion of Healthy Eating in Workplaces
Tool for Assessing the Nutrition Environment in Workplaces
Interim Guidelines For Beverages In Schools
MOHW Islandwide Schedule – Adolescent Health Clinic

HELP & SERVICES

[Vacancies](#)
[Feedback](#)
[Privacy Policy](#)
[Contact Us](#)

LINKS

[Government of Jamaica](#)
[Jamaica Diaspora Connect](#)
[Ministry of Justice](#)
[Virtual Reference Service](#)
[CARPHA Evidence Portal](#)
[VHL Regional Portal](#)
[Virtual Health Library](#)
[COVID-19 Medical Portal from EBSCO](#)