



## Press Releases

### COVID-19 Clinical Management Summary For Wednesday, September 16, 2020

NEW CASES 24 HRS OVERALL Confirmed Cases 210 4,374 SEX CLASSIFICATION Males 100 1,970 Females 110 2,391 Under Investigation 0 13 AGE RANGE 79 days to 88 years 13 days to 97 years PARISH CLASSIFICATION OF NEW CASES St. Catherine 39 1,105...

[Read More](#)

September 17th, 2020

### COVID-19 Clinical Management Summary For Tuesday, September 15, 2020

NEW CASES 24 HRS OVERALL NOTES Confirmed Cases 122 4,164 SEX CLASSIFICATION Males 66 1,870 Females 56 2,281 Under Investigation 0 13 AGE RANGE 11 months to 88 years 13 days to 97 years PARISH CLASSIFICATION OF NEW...

[Read More](#)

September 16th, 2020

### COVID-19 Update for Monday, September 14, 2020

NEW CASES 24 HRS OVERALL COMMENTS Confirmed Cases 109 4,042 SEX CLASSIFICATION Males 45 1,805 Females 64 2,224 Under Investigation 0 13 AGE RANGE 5 to 87 years 13 days to 97 years PARISH CLASSIFICATION OF NEW...

[Read More](#)

September 15th, 2020

### COVID-19 Clinical Management Summary For Sunday, September 13, 2020

NEW CASES 24 HRS OVERALL NOTES Confirmed Cases 162 3,933 SEX CLASSIFICATION Males 70 1,759 Females 91 2,156 Under Investigation 1 18 AGE RANGE 2 to 89 years 13 days to 97 years PARISH CLASSIFICATION OF NEW...

[Read More](#)

September 14th, 2020

### COVID-19 Clinical Management Summary for Saturday, September 12, 2020

NEW CASES 24 HRS OVERALL NOTES Confirmed Cases 148 3,771 SEX CLASSIFICATION Males 64 1,668 Females 77 2,048 Under Investigation 7 55 AGE RANGE 1 to 77 years 13 days to 97 years PARISH CLASSIFICATION OF NEW CASES Kingston...

[Read More](#)

September 13th, 2020

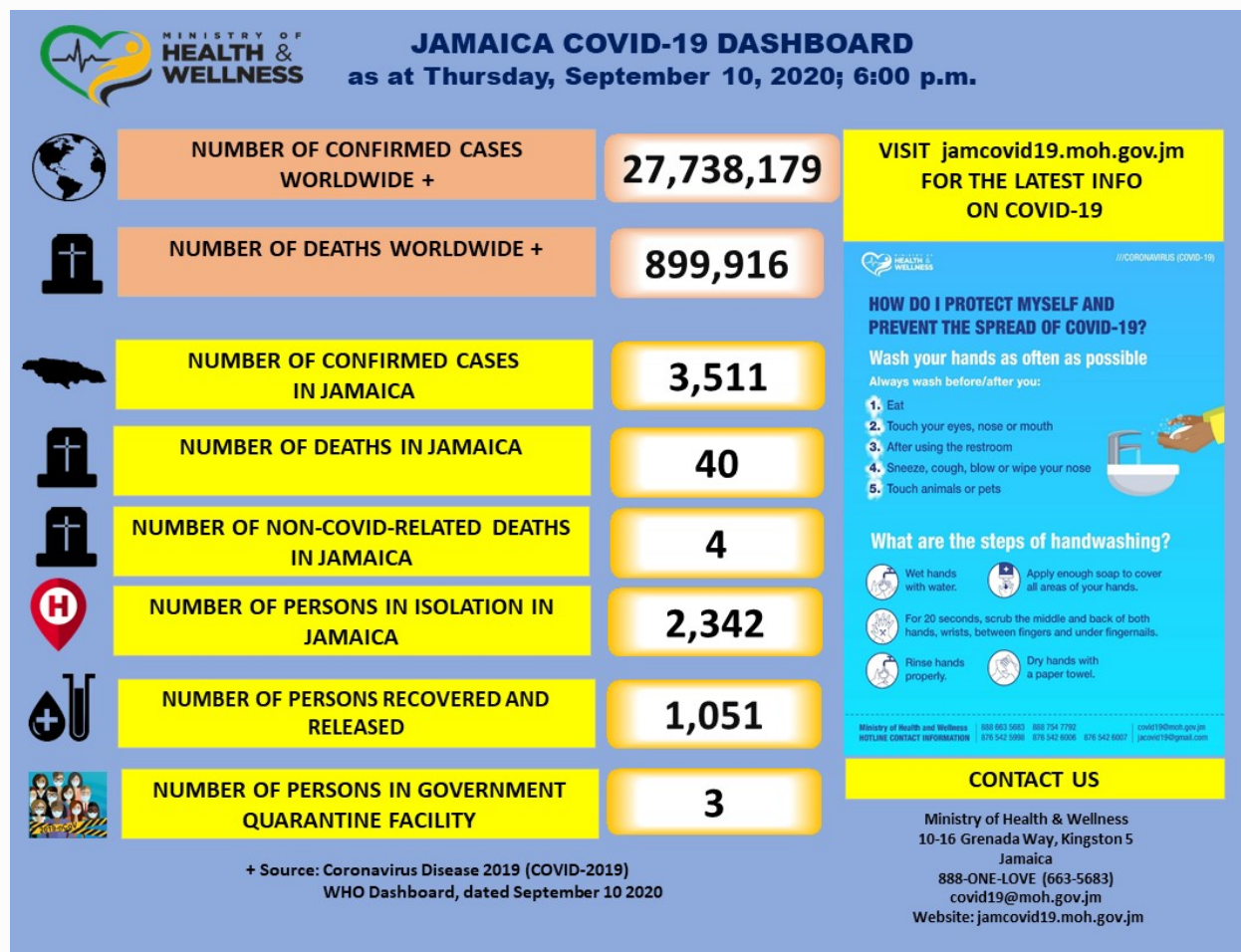
## COVID-19 Clinical Management Summary for Friday, September 11, 2020

NEW CASES 24 HRS OVERALL Confirmed Cases 112 3,623 SEX CLASSIFICATION Males 27 1,971 Females 40 1,604 Under Investigation 45 48 AGE RANGE 15 to 95 years 13 days to 97 years PARISH CLASSIFICATION OF NEW CASES Kingston & St. Andrew ...

[Read More](#)

September 11th, 2020

## Jamaica records Two COVID-19 deaths, 74 new positives



Regrettably, the Ministry of Health and Wellness confirms two new COVID-19 related deaths. The deceased are a 90-year-old male of a Kingston & St. Andrew address and a 34-year-old female of a St James address, who's death previously reported as under investigation. Both also had comorbidities and we express condolences...

[Read More](#)

September 10th, 2020

## Jamaica records Two COVID-19 deaths, 114 new positives

Regrettably, the Ministry of Health & Wellness confirms two new COVID-19-related deaths. The deceased are an 80 year old female and a 12 year old male, who both had comorbidities and are both from Manchester. The Ministry extends its deepest condolences to the families of the deceased. The total number...

[Read More](#)

September 9th, 2020

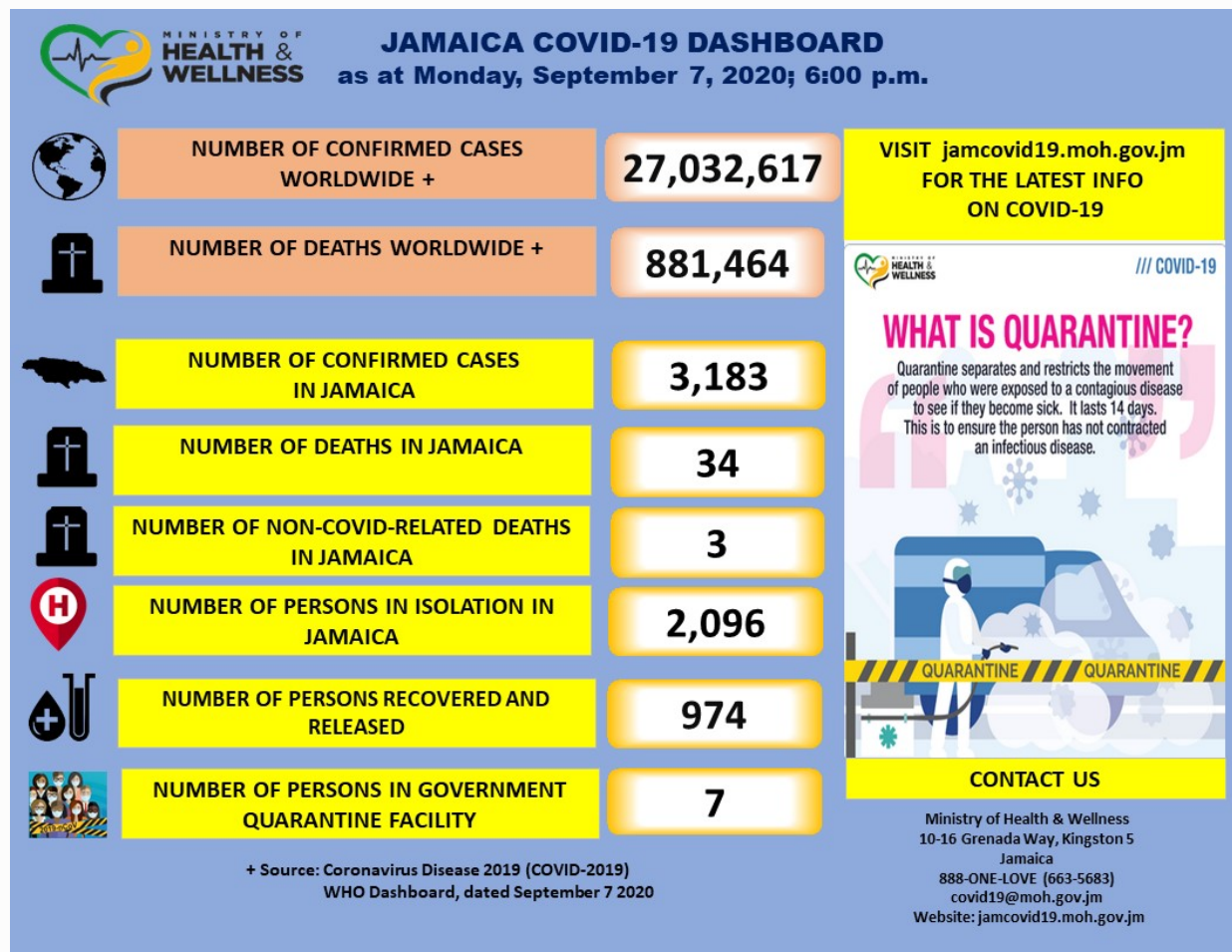
## Jamaica records 2 more COVID-19 deaths, 140 new cases

It is with regret that the Ministry of Health and Wellness reports the passing of two more persons due to COVID-19. The two cases were formerly under investigation. Also in the last 24 hours, the island recorded 140 new positives. One of the COVID-19 deaths is a 77-year-old female from...

[Read More](#)

September 8th, 2020

## COVID-19 Update: Jamaica now at 3,183 Confirmed Cases



Regrettably, the Ministry of Health & Wellness confirms one new COVID-19 related death. The deceased is an 83-year-old female, who was suffered from hypertension and diabetes. She was from a Manchester address. The total number of deaths from COVID-19 is now 34. (1.1%). Three additional cases were coincidental death of...

[Read More](#)

September 7th, 2020

## MINISTER'S PRESENTATIONS

© Thursday September 10, 2020

Message of the Minister of Health & Wellness Dr. The Hon. Christopher Tufton World Suicide Prevention Day – “Working Together to Prevent Suicide”



All Presentations ↗

## PUBLICATIONS

### Aedes Attack



### Vitals – A Quarterly Report of the Ministry of Health (May 2019)



### Vision for Health 2030 – Ten Year Strategic Plan 2019 – 2030



### Green Paper on National Health Insurance Plan for Jamaica



All Publications [↗](#)



# BEVERAGE FOR SCHOOLS REGISTRATION

## “PHARMWATCH”

# DRUG MONITORING FORM

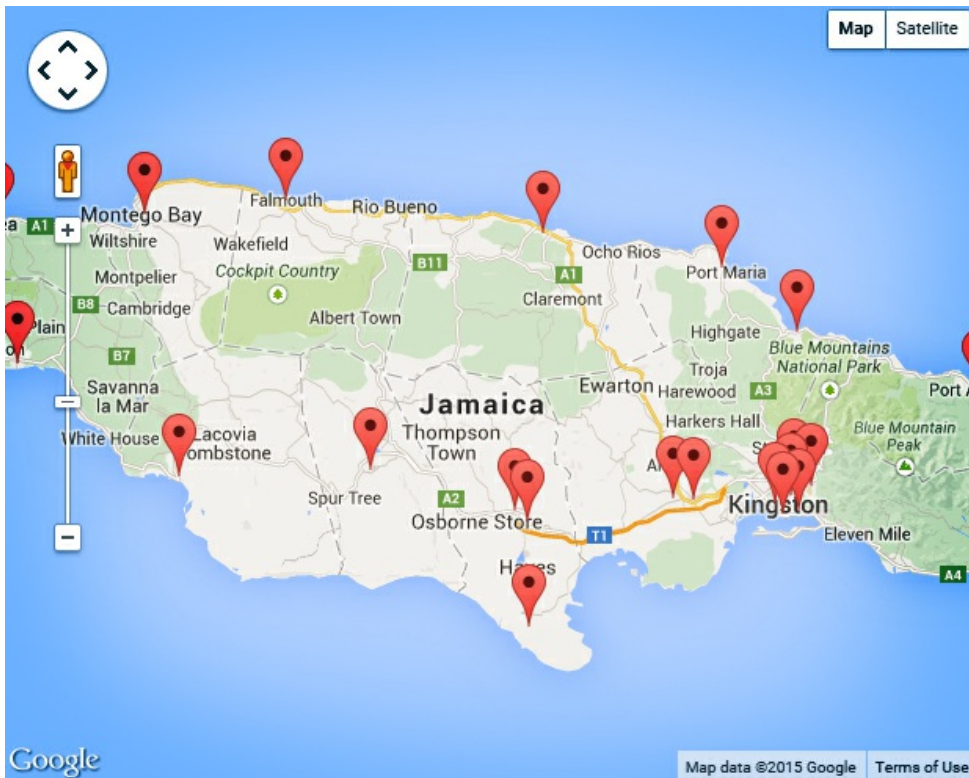
### COVID-19 SELF REPORT

Complete a COVID-19 self assessment.



VIDEO FEATURE

## LOCATION OF HOSPITALS AND HEALTH CENTRES



[View Interactive Map](#)

## PUBLIC EDUCATION RESOURCES

### Wash Hands Regularly



Wash your hands as often as possible to prevent the spread of diseases. Germs can spread easily from person to person and make you sick. During the day, we may touch books, door knobs, tables, toys and other items that may contain germs. You must always wash your hands: Before...

[Read More](#)

### Flu Prevention



[All Public Education Resources ↗](#)

## WEEKLY SURVEILLANCE BULLETIN

[> Weekly Bulletin EW 35 2020](#)

[> Weekly Bulletin EW 34 2020](#)

[All Bulletins ↗](#)

## MINISTRY OF HEALTH & WELLNESS



### REGIONAL AUTHORITIES

[Southern Regional Health Authority](#)

[Southeast Regional Health Authority](#)

[Northeast Regional Health Authority](#)

[Western Regional Health Authority](#)

### SITEMAP

[Home](#)

[Programmes & Policies](#)

[Media Centre](#)

[Divisions, Units & Agencies](#)

[Councils](#)

[Leadership](#)

[About Us](#)

[Contact Us](#)

### RESOURCES

[Mental Health Clinic Schedules](#)

Physical Activity Bible  
Patient Transfer Manual  
Annual Reports  
Statistics  
Guidelines  
Forms  
Staff Orders for the Public Service  
Ministry of Health's Strategic Business Plan (2015-2018)  
SECIN  
HINARI  
List of Vital Drugs and Medical Sundries for Public Health Institutions  
Regional Health Authorities' Conformance Reports  
Regional Health Authorities' Audit Reports  
Public Sector Customer Service Satisfaction Assessment Report  
COVID-19 Resources and Protocols  
Protocol for the Nutritional Management of Non-communicable Diseases in Jamaica  
MOHW Guidelines for the importation of Human Remains  
Guide for the Promotion of Healthy Eating in Workplaces  
Tool for Assessing the Nutrition Environment in Workplaces  
Interim Guidelines For Beverages In Schools  
MOHW Islandwide Schedule – Adolescent Health Clinic  
Breastfeeding Support Network

#### **HELP & SERVICES**

[Vacancies](#)  
[Feedback](#)  
[Privacy Policy](#)  
[Contact Us](#)

#### **LINKS**

[Government of Jamaica](#)  
[Jamaica Diaspora Connect](#)  
[Ministry of Justice](#)  
[Virtual Reference Service](#)  
[CARPHA Evidence Portal](#)  
[VHL Regional Portal](#)  
[Virtual Health Library](#)  
[COVID-19 Medical Portal from EBSCO](#)