

(COVID-19)

## About Coronavirus Disease 2019 (COVID-19)

### Press Conference

April 14, 2020

Press Conference held by Minister of Health, Labour and Welfare, KATO Katsunobu, Friday, April 14, 2020, 8:30 a.m. Ministry of Health, Labour and Welfare.

※Please click the "subtitles" in the video button, and you click the "Settings" afterwards, and choose English among "Subtitles/cc" to see English subtitles.

[Past Ministerial Conference](#)

## Coronavirus disease 2019 (COVID-19) situation within and outside the country

As of 12:00, Apr. 23, 11,919cases have been confirmed.

○Confirmed cases in Japan  
【 ( 1 ) PCR test positives】

	PCR tested positive	PCR tested
Domestic cases (excluding returnees by chartered flights)	11,772 (+420)	112,108 (+4,678)
Airport quarantine	132 (+2)	23,046 (+718)



Domestic cases (excluding returnees by chartered flights)	10,082 (+340)	5,024 (+81)	259 (+18)	622 (+33)	351 (+22)	3,826 (+186)	2,391 (+70)	287 (+10)
Airport quarantine	130 (+2)	130 (+2)	0	0	0	0	2	0
Returnees by chartered flights (Identified by quarantine policy)	0	0	0	0	0	0	15	0
<b>Total</b>	<b>10,212 (+342)</b>	<b>5,154 (+83)</b>	<b>259 (+18)</b>	<b>622 (+33)</b>	<b>351 (+22)</b>	<b>3,826 (+186)</b>	<b>2,408 (+70)</b>	<b>287 (+10)</b>

## Hospitalization and discharge

○Confirmed cases in Japan

### Hospitalization and Discharge

#### 【Domestic cases】

As of 18:00, Apr. 16

PCR tested positive	Currently in hospital		Already discharged from hospital	Death
	9, 1 6 7 (+503)	8, 0 0 7 (+414)	1, 0 1 2 (+77)	1 4 8 (+12)
	From severe to moderate/mild symptoms 5 2			

#### 【Cases at the Cruise ship】

PCR tested positive (in hospital in Japan)	Currently in hospital		Already discharged from hospital	Death
	6 7 2	1 5 (+1)	6 4 4 (-1)	1 3
	From severe to moderate/mild symptoms 3 2			

#### 【Total】

PCR tested positive (in hospital in Japan)	Currently in hospital		Already discharged from hospital	Death
	9, 8 3 9 (+503)	8, 0 2 2 (+415)	1, 6 5 6 (+76)	1 6 1 (+12)
	From severe to moderate/mild symptoms 8 4			

The number in parentheses indicates the change from the previous day.

### The situation of occurrence of patients with COVID-19 (map)

This shows the number of the novel coronavirus infectious cases reported in Japan on a map by prefecture. Date is confirmed date. The number of patients on charter flight and cruise ship is not included.

<https://mhlw-gis.maps.arcgis.com/apps/opsdashboard/index.html#/0c5d0502bbb54f9a8dddebca003631b8>

According to official government reports from other counties, as of 12:00, Apr. 23, 2,580,812 infectious cases and 181,986 deaths were confirmed.

○Confirmed cases outside Japan

## Government measures

### 1. The Basic Policies

○Basic Policies for Novel Coronavirus Disease Control(Revised on April 16, 2020)

On April 16, the areas under declaration of state of emergency were expanded to all 47 prefectures. The Basic Policies decided on March 28 have been revised.

[Basic Policies for Novel Coronavirus Disease Control by the Government of Japan \(Summary\)](#)[116KB]

○Basic Policies for Novel Coronavirus Disease Control(Revised on April 7, 2020)

With the declaration of a state of emergency on April 7, the Basic Policies decided on March 28 have been revised.

[Basic Policies for Novel Coronavirus Disease Control\(Revised on April7,2020\)](#)[123KB]

[\(Summary Version\)Basic Policies for Novel Coronavirus Disease Control by the Government of Japan](#)[42KB]

○Basic Policies for Novel Coronavirus Disease Control (March 28, 2020)

On March 28, “Basic Policies for Novel Coronavirus Disease Control” decided by the Headquarters for Novel Coronavirus Disease Control.

This Basic Policies present measures to be taken so that the government, local governments, and the people will work together to have an accurate grasp of the situation and further advance countermeasures against the novel coronavirus infectious disease.

[\(Summary Version\)Basic Policies for Novel Coronavirus Disease Control by the Government of Japan](#)[42KB]

○Basic Policies for Novel Coronavirus Disease Control (February 25, 2020)

On February 25, “Basic Policies for Novel Coronavirus Disease Control” decided by the Headquarters for Novel Coronavirus Disease Control. This policy summarizes the measures that are currently being taken and the perspectives of possible future measures to be taken to respond to future development.

[Basic Policies for Novel Coronavirus Disease Control](#)[151KB]

[\(Summary Version\) Basic Policies for Novel Coronavirus Disease Control](#)[103KB]

## 【Press Conference】 Basic Policies for Prevention and Control of the Novel Coronavirus

On March 2, Government Officials and Experts held a press conference on the case of the coronavirus at the Ministry of Foreign Affairs of Japan. Conducted by:

SAHARA Yasuyuki Senior Assistant Minister for Global Health, Minister’s Secretariat, Ministry of Health, Labor and Welfare

SUZUKI Tadaki M.D., Ph.D. Director, Department of Pathology, National Institute of Infectious Diseases

OSUMI Yo Deputy Director-General/ Deputy Assistant Minister, Consular Affairs Bureau, Ministry of Foreign Affairs

KAMOSHIDA Naoaki Assistant Press Secretary/ Director, International Press Division, Minister’s Secretariat, Ministry of Foreign Affairs

INATSU Toshinobu Immigration Services Agency/ Deputy Director, Border Management Division

NODA Hiroyuki M.D., Ph.D. Councilor, Coordination Office of Measures on Emerging Infectious Diseases Office for Pandemic Influenza and Infectious Diseases Preparedness and Response, Cabinet Secretariat

Please refer to the YouTube video as follows;

YouTube video:[Basic Policies for Prevention and Control of the Novel Coronavirus](#)

### 2.Understanding the situation of infection

By notification by physicians under the Infections Diseases Control Law, grasp suspected disease carrier and conduct examination if it is deemed necessary by physicians.

If carrier is confirmed, conduct active epidemiological investigation based on the law and identify those who have been in close contact with the infected person.

For those who have been in close contact with infected person, the measures for preventing from spreading infection are being conducted

by requesting to monitor own health condition and to refrain from leaving residence, etc..

We decided to apply medical insurance to the PCR test (on March 6). This makes it possible for medical institutions to request directory to private laboratories without going through public health centers, and further utilization of the examination capabilities of private laboratories will be achieved.

## 【Press Conference】 The case of the coronavirus

**April 23,2020**

On April 23, Government Officials held a press conference on the case of the coronavirus at the Ministry of Foreign Affairs of Japan.

Please refer to the YouTube video as follows:

[YouTube video](#)

Figure 1: [PDF \[COVID-19\] Declaration of a State of Emergency in response to the Novel Coronavirus Disease](#)  [22KB]

Figure 2: [PDF Basic Policies for Novel Coronavirus Disease Control by the Government of Japan \(Summary\)](#)  [114KB]

Figure 3: [PDF Updates on COVID-19 in Japan](#)  [2,172KB]


Figure 4: [PDF Emergency Economic Measures for Response to COVID-19](#)  [48KB]

Figure 5: [PDF Changes in the number of passengers going through ticket gates of major stations](#)  [396KB]

Figure 6: [PDF Analysis of demographic changes in designated prefectures under special caution \(as of 15:00, April 22\)](#)  [395KB]

## 【Press Conference】 The case of the coronavirus

**April 8,2020**

On April 8, a press conference on the situation of the COVID-19 was held by Related Ministries of Japan.

Please refer to the YouTube video as follows:

[YouTube video](#)

Figure 1: [PDF Updates on COVID-19 in Japan](#)  [2,351KB]

Figure 2: [PDF Emergency Economic Measures for Response to COVID 19](#)  [423KB]

Figure 3: [PDF Revision of Basic Policies for Novel Coronavirus Disease Control \(Summary\)](#)  [146KB]

Figure 4: [PDF Basic Policies for Novel Coronavirus Disease Control\(Revised on April 7,2020\)](#)  [123KB]

Figure 5: [PDF Basic Policies for Novel Coronavirus Disease Control by the Government of Japan \(summary\)](#)  [42KB]

## 【Press Conference】 The case of the coronavirus

**March 31,2020**

On March 31, an expert and Government Officials held a press conference on the responses to the coronavirus disease at the Ministry of Foreign Affairs of Japan.

Please refer to the YouTube video as follows:

[YouTube video](#)

Figure 1: [PDF Updates on COVID-19 in Japan](#)  [2,171KB]

Figure 2: [PDF Basic Policies for Novel Coronavirus Disease Control by the Government of Japan\(summary\)](#)  [42KB]

## 【Press Conference】 The case of the coronavirus

**March 17,2020**

On March 17, Government Officials held a press conference on the case of the coronavirus at the Ministry of Foreign Affairs of Japan.

Please refer to the YouTube video and figures used in their explanation as follows:

YouTube video:[Part1,Part2,Part3](#)

Figures:  [Coronavirus Disease 2019 \(COVID-19\) Situation in Japan](#)  [1,249KB]

## **【Press Conference】 The case of the coronavirus**

**March 10,2020**

YouTube video:[Part1,Part2,Part3](#)

On March 10, Government Officials held a press conference on the case of the coronavirus at the Ministry of Foreign Affairs of Japan.

Please refer to the YouTube video and figures used in their explanation as follows;

YouTube video:[Part1,Part2,Part3](#)

Figure 1:  [COVID-19 Clusters in Japan](#)  [463KB]

Figure 2:  [Overview of the Act on Special Measures](#)  [416KB]

Figure 3:  [PCR Testing system](#)  [431KB]

Figure 4:  [Screenshot\\_COVID19Map\\_MHLW](#)  [1,848KB]

Figure 5:  [Immigration Control and Refugee Recognition Act](#)  [120KB]

### **3 . Measures for preventing outbreaks**

In Japan, sporadic cases of small numbers of patients have been observed.

The spread of infection can be prevented by tracing the route of transmission, especially for close contacts.

The important thing is to minimize the spread of infection in the country by preventing one cluster of patients from creating another cluster.

Please refer to the handout below;

[Preventing Outbreaks of the Novel Coronavirus](#) [148KB]

## **Expert Meeting on Control of the Novel Coronavirus Disease Control "Analysis and Recommendations of the Response to the Novel Coronavirus (COVID-19) "(April 1, 2020)**

[Expert Meeting on Control of the Novel Coronavirus Disease Control Analysis and Recommendations of the Response to the Novel Coronavirus \(COVID-19\) \(April 1, 2020\) \(Excerpt\)](#) [106KB]

## **Expert Meeting on the Novel Coronavirus Disease Control : Analysis of the Response to the Novel Coronavirus (COVID-19) and Recommendations (Exerpt) (As of March 19)**

["Views Expert Meeting on the Novel Coronavirus Disease Control \(As of March 19\) "\(PDF\)](#)

## **Expert Meeting on the Novel Coronavirus Disease Control "Views on the Novel Coronavirus Disease Control" (As of March 9)**

The Expert Meeting on the Novel Coronavirus Disease Control released "Views on the Novel Coronavirus Disease Control" summarizing the results of the study based on the analysis of the Cluster Response Team of MHLW.

In the Views, Japanese situation as of today (March 9) is not moving toward an explosive spread of infections, and appears to be somewhat holding steady. In addition, regarding measures in Hokkaido, it is difficult to estimate the effect about at least two weeks after the declaration of state of emergency in Hokkaido, and thereafter, the analysis of the effects of this measures is scheduled to be announced around March 10.

["Views on the Novel Coronavirus Disease Control" \(As of March 9\)](#) [217KB]

## 4. Border Control Measures

In order to prevent 2019-nCoV from entering Japan via foreign aircraft and ships and take necessary measures related to aircraft, etc., in the Ministry of Health, Labour and Welfare classifies 2019-nCoV infection as "Type of infectious disease of Quarantine law article 34". This means that government is able to take measures such as inquiry and medical consultation for people entering Japan from abroad, isolation and detention of patients, disinfection for aircrafts, etc.

Based on the epidemic of this infection in other countries, as a border control measure in Japan, for arriving flights and ships from some countries, take measures to reduce the risk of domestic secondary infections by interviewing for all passengers using questionnaires, calling for self-reports by displaying posters, distributing health cards.

In the meantime, foreigners who have stayed in some areas of some countries within 14 days will be refused entering Japan under the Immigration Control and Refugee Recognition Act, with or without symptoms, unless there are special circumstances.

Anyone who has boarded an airplane or ships arriving from China or Republic of Korea at or after 0:00 on March 9 (JST), or from European countries, or Egypt at or after 0:00 on March 21 (JST), or from United States of America at or after 0:00 on March 26 (JST), or from Indonesia, Singapore, Thailand, Philippines, Brunei Darussalam, Viet Nam, Malaysia, Israel, Qatar, Democratic Republic of the Congo or Bahrain at or after 0:00 on March 28 (JST) and not be isolated or stopped is required to stay 14 days at a location designated by the quarantine station chief and not to use public transportation in Japan.

[Q&A](#)

## 5. The Cruise ship

### All passengers and crews disembarked from the Cruise ship "Diamond Princess" on March 1st.

※ As of 18:00, Mar. 26

	PCR tested positive ※ [With no symptoms]	Already discharged from hospital	Hospitalized with a ventilator or intensive care unit	Death
Cases at the Cruise ship (Identified by quarantine policy) (3,711)	712 【331】	603 (+2)	11	10

The number in parentheses indicates the change from the previous day.

### The infection control measures taken at the Cruise ship "Diamond Princess" (provisional translation)

[The infection control measures taken at the Cruise ship "Diamond Princess" \(provisional translation\)](#)

 [PDF](#)  [29KB]

### 【Press Conference】 Expert Meeting on the Novel Coronavirus Disease Control

On February 24, Experts held a press conference on the case of the novel coronavirus at the Ministry of Foreign Affairs of Japan. Conducted by:

Members of Expert Meeting on the Novel Coronavirus Disease

- OMI Shigeru, M.D., Ph.D., President, Japan Community Health care Organization
- OHMAGARI Norio, M.D., Ph.D., Director, Disease Control & Prevention Center, National Center for Global Health and Medicine
- KITA Yosuke, Senior Coordinator for Global Health Cooperation, International Affairs Division, Ministry of Health, Labour and Welfare

Please refer to the YouTube video clip and figures used in their explanation as follows:

Please refer to the YouTube video clips and figures used in their explanation as follows,

YouTube video clips:[Part1](#),[Part2](#),[Part3](#),[Part4](#),[Part5](#),[Part6](#),[Part7](#)

Figure:[PDF](#) [Number of new symptomatic coronavirus infection cases and fever reports by date of onset, Cruise Ship DP, as of February 23, 2020](#)  [68KB]

## Press Conference: Situation of the COVID-19 in the Cruise Ship "Diamond Princess"

Press Conference on the Situation of the novel Coronavirus Disease in the Cruise Ship off the coast of Yokohama was held in the MOFA Press Conference Room from 20:40 to 21:40 on Friday 21 February 2020.

Professor, SUZUKI Motoi, M.D., MSc., PHDC, Ph.D., of Infectious Disease Surveillance Center, National Institute of Infectious Disease and Professor, NISHIURA Hiroshi, M.D., Ph.D., DTM&H, of Social Medicine, Faculty of Medicine, Hokkaido University explained the situation based on their analysis using the data obtained on the cruise ship.

Please refer to the YouTube video clips and figures used in their explanation as follows;

YouTube video clips:[Part1](#),[Part2](#),[Part3](#),[Part4](#)


Figure 1: [PDF](#) [Changes in the number of new coronavirus infection cases and fever reports on the cruise ship \(as of February 19\)](#)  [374KB]


Figure 2: [PDF](#) [Number of COVID-19 cases with symptoms among the passengers on the Cruise ship \(by close contact status, as of 02/19/2020\)](#)  [412KB]

Figure 3: [PDF](#) [Number of predicted infections from one patient, by generation \(Reproduction rate\)](#)  [182KB]

---

## Message to the people in Japan

### 1.Characteristics of new coronavirus infections ascertained at present (As of March 28)

<The routes of transmission>

The routes of transmission are generally through droplets and contacts.

In addition, under certain circumstances, such as when talking to many people at a short distance in confined spaces, there is the risk of spreading the infection even without coughing or sneezing.

The risk of occurrence of clusters is particularly high when the "Three Cs" overlap.

- 1 . Closed spaces with insufficient ventilation
- 2 . Crowded conditions with people
- 3 . Conversations in short distance

< Common symptoms and risk of developing severe>

Often, fevers or respiratory symptoms may persist for around one week, and many patients complain of strong fatigue. It has been reported that the period of hospitalization tends to be longer than that of seasonal influenza.

Those infected often present only mild symptoms, which will heal in many cases. The severity of the novel coronavirus disease, it does have the higher risk than seasonal influenza. The risks of developing severe symptoms are particularly high among the elderly and patients with underlying diseases.

### 2.Prevention Measures and Guide of Consultation

It is important to wash your hands frequently and to cover your mouth and nose with a tissue, or with the crook of your arm if a tissue is unavailable, when coughing or sneezing. To protect yourself and others from the virus, just as you do for the common cold or the flu. We strongly recommend everyday preventive actions to help keep the virus from spreading.

Important notice for preventing COVID-19 outbreaks.

**Avoid the "Three Cs"!**





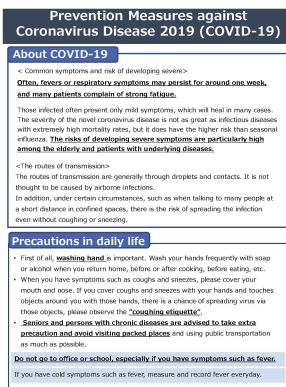
If you have any of the following symptoms, please consult with the consultation center for people with potential exposure to COVID-19:

- You have had cold symptoms or a fever of 37.5°C or over for four days or more. (including when you need to continue to take an antipyretic)
- You have a strong feeling of weariness (fatigue) or shortness of breath (difficulty breathing).

\* Please also consult with the consultation center if you are a senior citizen or have an underlying disease, and you have had the symptoms mentioned above for about two days.

If the consultation center suspects that you have been infected with the virus, it will introduce you to a medical institution where medical services for people with potential exposure to COVID-19 are available. Please visit the medical institution, wearing a facemask, and refrain from using public transportation.

※ [Prevention Measures COVID-19](#) (February 25, 2020 version) [464KB]



※ [Eight-point list of precautions to take at home](#) [549KB]

※ [Measures against infectious diseases](#)[994KB]

※ [Washing Hands](#)[910KB]

※ [Coughing Manners](#)[951KB]

## 3.Q & A on 2019 Novel Coronavirus (2019-nCoV)

[Q & A on 2019 Novel Coronavirus \(2019-nCoV\)](#) as of April 1, 2020

[Q & A on distribution of cloth masks to all households](#) as of April 7, 2020

## Reference

## The CNN published at 11:00 (Japan time) on March 6

[The CNN published at 11:00 \(Japan time\) on March 6](#)

## Call centers for foreign tourists

[Tourists from other countries may seek help on https://www.japan.travel/en/plan/hotline/](https://www.japan.travel/en/plan/hotline/)

## Medical institutions offering assistance in foreign languages

You can find the medical institutions offering assistance in foreign languages on the following website. Click here [Medical institutions offering assistance in foreign languages](#)

## WHO

[Pneumonia with unknown causes in China](#)

[WHO statement on the outbreak of pneumonia in Wuhan city, China](#)

[New coronavirus –South Korea](#)

[New coronavirus in China](#)

[International Health Regulations Emergency Committee on novel coronavirus in China](#)

## National Institute of Infectious Diseases

[Human-to-human transmission of a new coronavirus](#)

[Details on coronavirus and information about pneumonia linked to a new coronavirus reported in Wuhan city, Hubei Province of the People's Republic of China](#)

## Others

[National Health Commission of the People's Republic of China](#)

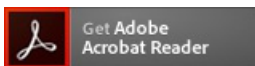
[Wuhan Municipal Health Commission](#)

[Guangdong Province Health Commission](#)

[Taiwan Centers for Disease Control - CDC](#)

[First Travel-related Case of 2019 Novel Coronavirus Detected in United States](#)

- ▶ [PDFファイルを見るためには、Adobe Readerというソフトが必要です。Adobe Readerは無料で配布されていますので、こちらからダウンロードしてください。](#)



▲ ページの先頭へ

御意見募集やパブリックコメント

▶ 国民参加の場

テーマ別に探す



報道・広報



政策について



厚生労働省について



統計情報・白書



所管の法令等



申請・募集・情報公開



## 関連リンク

- ▶ [他府省](#)
- ▶ [地方支分部局等](#)
- ▶ [全体的な取り組みや情報一覧](#)
- ▶ [クローズアップ厚生労働省一覧](#)

## 情報配信サービス

▶ [情報配信サービスメルマガ登録](#)



▶ [広報誌「厚生労働」](#)



▶ [携帯版ホームページ](#)



## ソーシャルメディア

▶ [facebook](#)



▶ [twitter](#)



▶ [YouTubeチャンネル](#)



- ▶ [利用規約・リンク・著作権等](#)
- ▶ [個人情報保護方針](#)
- ▶ [所在地案内](#)
- ▶ [アクセシビリティについて](#)
- ▶ [サイトの使い方\(ヘルプ\)](#)
- ▶ [RSSについて](#)
- ▶ [ホームページへのご意見](#)

〒100-8916 東京都千代田区霞が関1-2-2  
電話番号 03-5253-1111 (代表)

Copyright © Ministry of Health, Labour and Welfare, All Rights reserved.