



KDCA

Korea Disease Control and Prevention Agency

Updates on COVID-19 in Republic of Korea

20 January 2021

Local transmission cases as of 0:00 today (cumulative since 3 January 2020)

| | Total | City | | | | | | | |
|-------------------|----------------------------|----------------------------|--------------|--------------|--------------|--------------|--------------|--------------|------------|
| | | Seoul | Busan | Daegu | Incheon | Gwangju | Daejeon | Ulsan | Sejong |
| New | 373 | 135 | 12 | 11 | 14 | 11 | 1 | 3 | 0 |
| Cumulative | 67,507¹⁾ | 22,118¹⁾ | 2,346 | 8,070 | 3,409 | 1,359 | 911 | 828 | 148 |
| | Total | Province | | | | | | | |
| | | Gyeonggi | Gangwon | Chung-buk | Chung-nam | Jeon-buk | Jeon-nam | Gyeong-buk | Gyeong-nam |
| New | 126 | 9 | 2 | 7 | 2 | 9 | 7 | 18 | 6 |
| Cumulative | 17,233 | 1,517 | 1,400 | 1,796 | 905 | 616 | 2,691 | 1,684 | 476 |

¹⁾ Corrected local reporting error (December 26, 2020, 0:00, Seoul -1)

Imported cases, as of 0:00 today (cumulative since 3 January 2020)

| | Total | Region/Country | | | | | | Where confirmed | | Nationality | |
|--------------|--------------|---------------------|-------------------------|-------------------------|-------------------------|----------------------|---------------------|-------------------------|-------------------------|-------------------------|-------------------------|
| | | China | Asia ex-China | Europe | America | Africa | Oceania | Point of Entry | Community | Korean | Other |
| New | 31 | 0 | 8 | 6 | 11 | 6 | 0 | 1 | 30 | 13 | 18 |
| Total | 6,011 | 34 (0.6%) | 2,760 (45.9%) | 1,030 (17.1%) | 1,943 (32.3%) | 222 (3.7%) | 22 (0.4%) | 2,619 (43.6%) | 3,392 (56.4%) | 3,278 (54.5%) | 2,733 (45.5%) |

* Asia excluding China: Russia 4, Indonesia 1, UAE 1, Pakistan 1, Kazakhstan 1
 Europe: Poland 1, Hungary 3, Germany 2
 America: US 11
 Africa: Ghana 1, Nigeria 1, Tanzania 4

Case status, as of 0:00 today (cumulative since 3 January 2020)

| | Discharged from isolation | Under isolation | Severe/critical cases | Deceased |
|---|---------------------------|----------------------------|-----------------------|--------------|
| As of 0:00 19 January 2021 (Tue) | 59,468 | 12,363¹⁾ | 335 | 1,283 |
| As of 0:00 20 January 2021 (Wed) | 60,180 | 12,038 | 323 | 1,300 |
| Difference | (+)712 | (-)325 | (-)12 | (+)17 |

* Based on case data reported to the KDCA

** Severe/Critical: COVID-19 patients in isolation being treated with high flow oxygen therapy, mechanical ventilator, ECMO (Extracorporeal Membrane Oxygenation), CRRT (Continuous Renal Replacement Therapy)

※ Figures subject to correction based on findings from epidemiological investigations

¹⁾ Corrected local reporting error (December 26, 2020, 0:00, Seoul -1)



KDCA

Korea Disease Control and Prevention Agency

Updates on COVID-19 in Republic of Korea

20 January 2021

Recent major local clusters as of 12:00 today

| Location | Cluster | New cases | Total cases |
|--|-----------------------------|-----------|-------------|
| Seoul Seongdong-gu | Residential / care facility | 4 | 30 |
| Seoul Yangcheon-gu | Care facility 2 | 4 | 55 |
| Seoul Dongdaemun-gu | Sauna | 6 | 28 |
| Gyeonggi Gimpo-si | Day care center | 15 | 16 |
| Gyeonggi Yongin-si | Nursing home 2 | 10 | 11 |
| Gyeonggi Suwon-si | Church 3 | 12 | 13 |
| Gyeonggi Yangju-si | Meat processing factory | 4 | 104 |
| Chungnam Seocheon-gun | Church | 6 | 7 |
| Sejong-si | Music academy | 10 | 11 |
| Chungbuk Goesan-gun / Eumseong-gun / Jincheon-gun / Anseong-si | Hospitals | 22 | 452 |
| Gwangju Gwangsan-gu | Convalescent hospital | 7 | 156 |
| Jeonnam Yeongam-gun | Temple | 12 | 37 |

* The specific figures may differ from the daily reported statistics or figures disclosed by local municipalities due to factors such as report timing and differences in the time period considered

Weekly risk assessment indicators

| | Week 52 (2020) (12.20.~12.26.) | Week 1 (2021) (12.27.~1.2.) | Week 2 (2021) (‘21.1.3.~1.9.) | Week 3 (2021) (‘21.1.10.~1.16.) |
|--|--------------------------------------|-----------------------------------|-------------------------------------|---------------------------------------|
| Daily average confirmed cases (n) | Local | 1016.7 | 930.4 | 738.0 |
| | Imported | 31.3 | 24.7 | 35.3 |
| | Total | 1,048.0 | 955.1 | 773.3 |
| Cases with chain of transmission under investigation (%)(n) | 24.7(1,814/7,336) | 24.7(1,650/6,686) | 23.1(1,252/5,413) | 24.6(940/3,822) |
| Percentage under management (Percent of new cases confirmed while under self-quarantine) | 33.3 | 35.4 | 41.1 | 39.3 |
| New clusters | 58 | 52 (▲6 ²) | 33(▲23 ²) | 10 ³) |
| Reproduction number (Rt) | 1.11 | 1.00 | 0.88 | 0.79 |
| Average critical/severe patients(n) | 288 | 330 | 388 | 382 |
| Number of deaths (n) | 134 | 149 | 158 | 136 |
| Number of ICU available | 164 | 191 | 205 | 261 |

※ Figures subject to change upon new findings from investigation

* Reclassified due to epidemiological link found

** Investigation ongoing



KDCA

Korea Disease Control and Prevention Agency

Updates on COVID-19 in Republic of Korea

20 January 2021

Overall case and test status as of 0:00 today (cumulative since 3 January 2020)

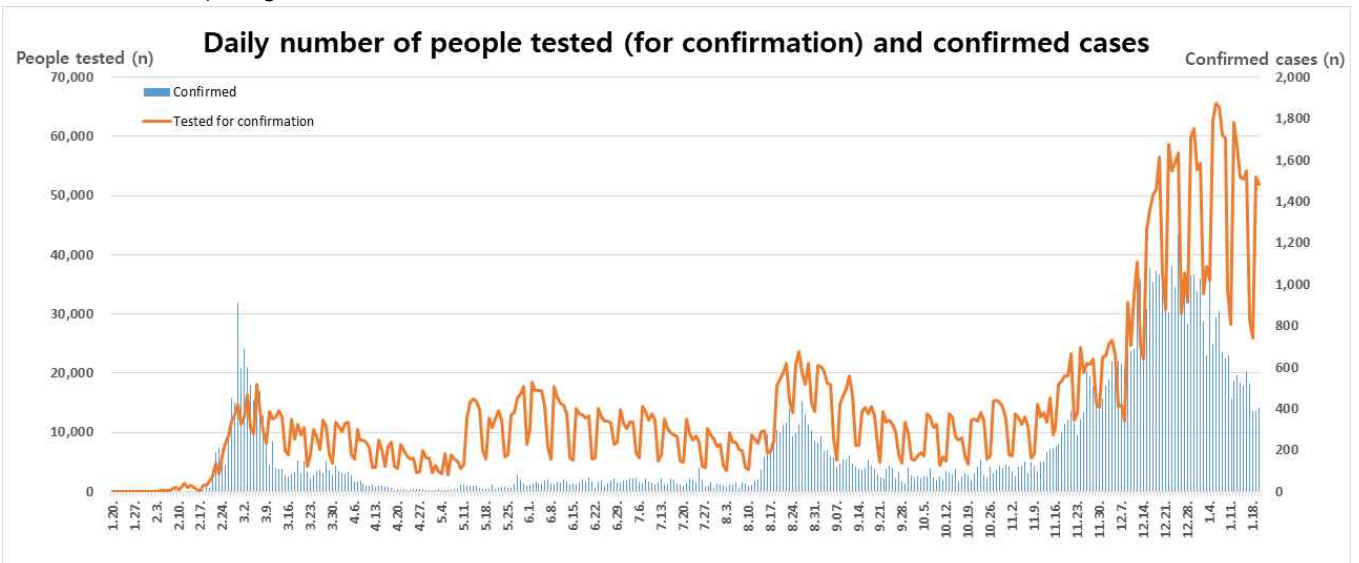
| Period (since 3 Jan) | Total | Tested positive (PCR) | | | | Testing in progress | Tested negative (PCR) |
|--|-------------------------|-----------------------|---------------------------|----------------------|------------|---------------------|-----------------------|
| | | Confirmed | Discharged from isolation | Under isolation | Deceased | | |
| As of 0:00 19 January 2021 (Tue) | 5,140,325 ¹⁾ | 73,114 ¹⁾ | 59,468 | 12,363 ¹⁾ | 1,283 | 154,345 | 4,912,866 |
| As of 0:00 20 January 2021 (Wed) | 5,192,129 | 73,518 | 60,180 | 12,038 | 1,300 | 148,141 | 4,970,470 |
| Difference | +51,804 | +404 | +712 | -325 | +17 | -6,204 | +57,604 |

* Based on case data reported to the KDCA

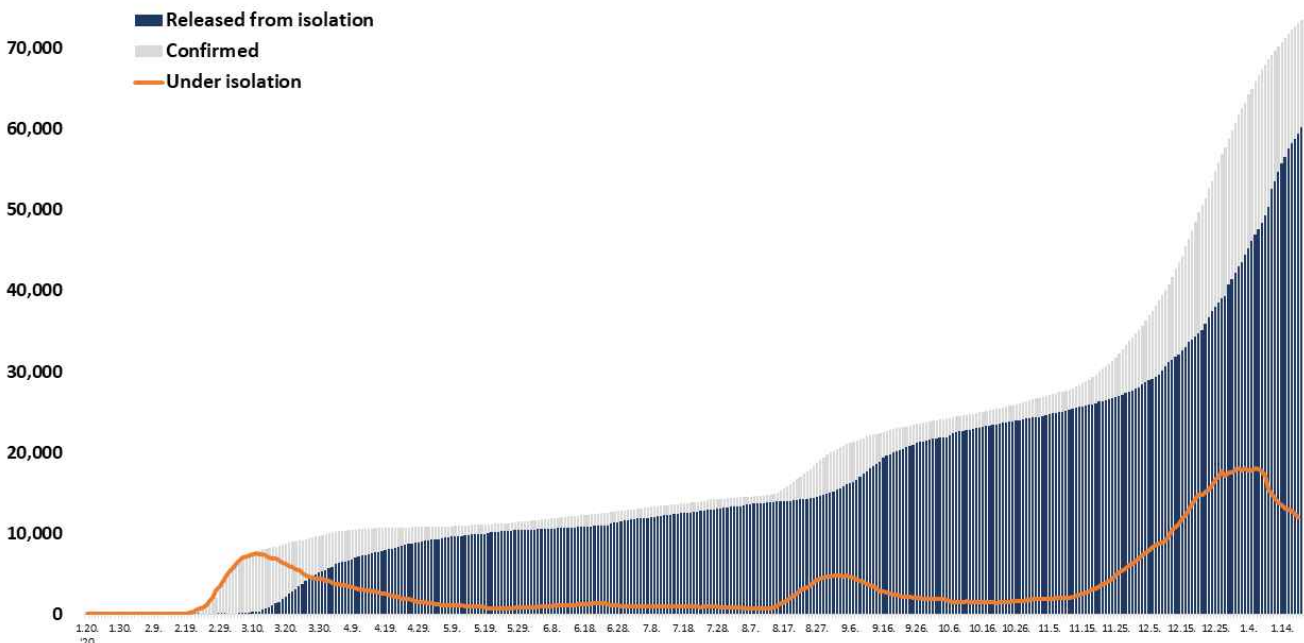
** Testing in progress includes number of completed tests with negative results that are being recorded with delays

※ Figures subject to correction based on findings from epidemiological investigations

¹⁾ Corrected local reporting error (December 26, 2020, 0:00, Seoul -1)



Total confirmed cases of COVID-19 in the Republic of Korea





KDCA

Korea Disease Control and
Prevention Agency

Updates on COVID-19 in Republic of Korea

20 January 2021

Regional distribution of cases as of 0:00 today (cumulative since 3 January 2020)

| Region | New cases | | Total cases | (%) | Incidence rate* (per 100,000) |
|---------------------|------------|-----------|----------------------------|--------------|----------------------------------|
| | Local | Imported | | | |
| Seoul | 135 | 8 | 22,859 ¹⁾ | (31.09) | 234.85 |
| Busan | 12 | 1 | 2,455 | (3.34) | 71.96 |
| Daegu | 11 | 1 | 8,188 | (11.14) | 336.06 |
| Incheon | 14 | 2 | 3,596 | (4.89) | 121.65 |
| Gwangju | 11 | 0 | 1,463 | (1.99) | 100.43 |
| Daejeon | 1 | 0 | 958 | (1.30) | 64.99 |
| Ulsan | 3 | 0 | 903 | (1.23) | 78.72 |
| Sejong | 0 | 0 | 172 | (0.23) | 50.24 |
| Gyeonggi | 126 | 13 | 18,517 | (25.19) | 139.75 |
| Gangwon | 9 | 2 | 1,573 | (2.14) | 102.11 |
| Chungbuk | 2 | 1 | 1,481 | (2.01) | 92.60 |
| Chungnam | 7 | 1 | 1,926 | (2.62) | 90.74 |
| Jeonbuk | 2 | 0 | 997 | (1.36) | 54.86 |
| Jeonnam | 9 | 0 | 678 | (0.92) | 36.36 |
| Gyeongbuk | 7 | 0 | 2,810 | (3.82) | 105.54 |
| Gyeongnam | 18 | 1 | 1,817 | (2.47) | 54.06 |
| Jeju | 6 | 0 | 506 | (0.69) | 75.44 |
| Border Screening | 0 | 1 | 2,619 | (3.56) | - |
| Total | 373 | 31 | 73,518¹⁾ | (100) | 141.80 |

* Total (cumulative) number of cases reported since January 2020 of region / Population of region (based on resident registration data of the Ministry of the Interior as of January 2020)

* Incidence rate based on the number of confirmed cases with the address of the reporting institution

¹⁾ Corrected local reporting error (December 26, 2020, 0:00, Seoul -1)



KDCA

Korea Disease Control and
Prevention Agency

Updates on COVID-19 in Republic of Korea

20 January 2021

Confirmed cases by gender and age group

| | | New cases (%) | Total cases (%) | Incidence rate* (per 100,000) |
|-------|-------------|---------------|-----------------|----------------------------------|
| Total | | 404 (100) | 73,518 (100) | 141.80 |
| Sex | Male | 202 (50.00) | 36,062 (49.05) | 139.44 |
| | Female | 202 (50.00) | 37,456 (50.95) | 144.15 |
| Age | 80 or above | 21 (5.20) | 3,668 (4.99) | 193.13 |
| | 70-79 | 31 (7.67) | 5,714 (7.77) | 158.41 |
| | 60-69 | 61 (15.10) | 11,580 (15.75) | 182.53 |
| | 50-59 | 76 (18.81) | 13,826 (18.81) | 159.53 |
| | 40-49 | 58 (14.36) | 10,541 (14.34) | 125.65 |
| | 30-39 | 47 (11.63) | 9,408 (12.80) | 133.54 |
| | 20-29 | 56 (13.86) | 11,351 (15.44) | 166.77 |
| | 0-9 | 27 (6.68) | 2,742 (3.73) | 66.09 |

* Total (cumulative) number of cases reported since January 2020 by sex and age / Population by sex and age (based on resident registration data of the Ministry of the Interior as of January 2020)

※ Figures subject to correction based on findings from epidemiological investigations

Deaths by gender and age group

| | | New deaths (%) | Total deaths (%) | Case fatality rate (%) |
|-------|-------------|----------------|------------------|------------------------|
| Total | | 17 (100) | 1,300 (100) | 1.77 |
| Sex | Male | 7 (41.18) | 640 (49.23) | 1.77 |
| | Female | 10 (58.82) | 660 (50.77) | 1.76 |
| Age | 80 or above | 13 (76.47) | 738 (56.77) | 20.12 |
| | 70-79 | 3 (17.65) | 355 (27.31) | 6.21 |
| | 60-69 | 1 (5.88) | 152 (11.69) | 1.31 |
| | 50-59 | 0 (0.00) | 40 (3.08) | 0.29 |
| | 40-49 | 0 (0.00) | 9 (0.69) | 0.09 |
| | 30-39 | 0 (0.00) | 6 (0.46) | 0.06 |
| | 20-29 | 0 (0.00) | 0 (0.00) | 0.00 |
| | 0-9 | 0 (0.00) | 0 (0.00) | 0.00 |

* Case fatality rate (CFR) (%) = Number of deaths / Number of confirmed cases x 100

※ Figures subject to correction based on findings from epidemiological investigations



KDCA

Korea Disease Control and
Prevention Agency

Updates on COVID-19 in Republic of Korea

20 January 2021

AGE DISTRIBUTION OF SEVERE/CRITICAL CASES

| | 1.7. | 1.8. | 1.9. | 1.10. | 1.11. | 1.12. | 1.13. | 1.14. | 1.15. | 1.16. | 1.17. | 1.18. | 1.19. | 1.20. |
|--------------|------|------|------|-------|-------|-------|-------|-------|-------|-------|-------|-------|-------|-------|
| Total | 400 | 404 | 409 | 401 | 395 | 390 | 374 | 380 | 374 | 360 | 352 | 343 | 335 | 323 |

| | Severe/Critical | (%) |
|--------------|-----------------|------------------|
| Total | 323 | (100.0) |
| 80 and above | 64 | (19.8) |
| 70-79 | 127 | (39.3) |
| 60-69 | 95 | (29.4) |
| 50-59 | 25 | (7.7) |
| 40-49 | 7 | (2.2) |
| 30-39 | 3 | (0.9) |
| 20-29 | 2 | (0.6) |
| 10-19 | 0 | (0.0) |
| 0-9 | 0 | (0.0) |

* Severe/Critical: COVID-19 patients in isolation being treated with high flow oxygen therapy, mechanical ventilator, ECMO (Extracorporeal Membrane Oxygenation), CRRT (Continuous Renal Replacement Therapy)

* ICU treatment is decided based on the need for intensive care based on factors such as clinical condition and presence of any underlying medical condition and may differ from severe and critical case classification criteria. The number of severe/critical cases may not match the number of patients in ICU.

※ Figures subject to correction based on findings from epidemiological investigations



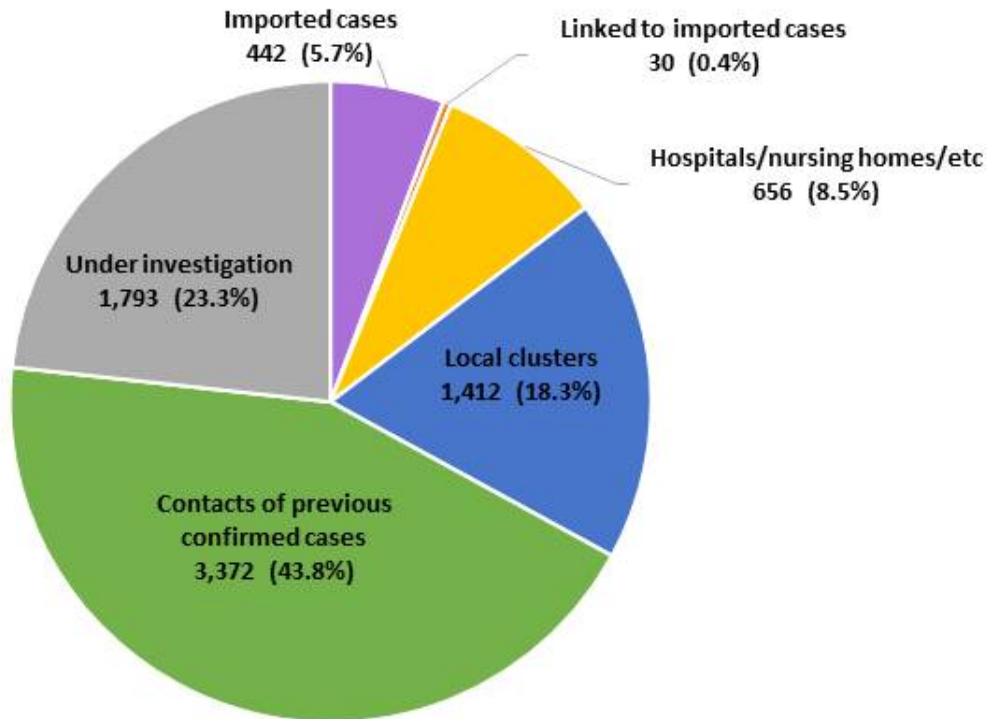
KDCA

Korea Disease Control and Prevention Agency

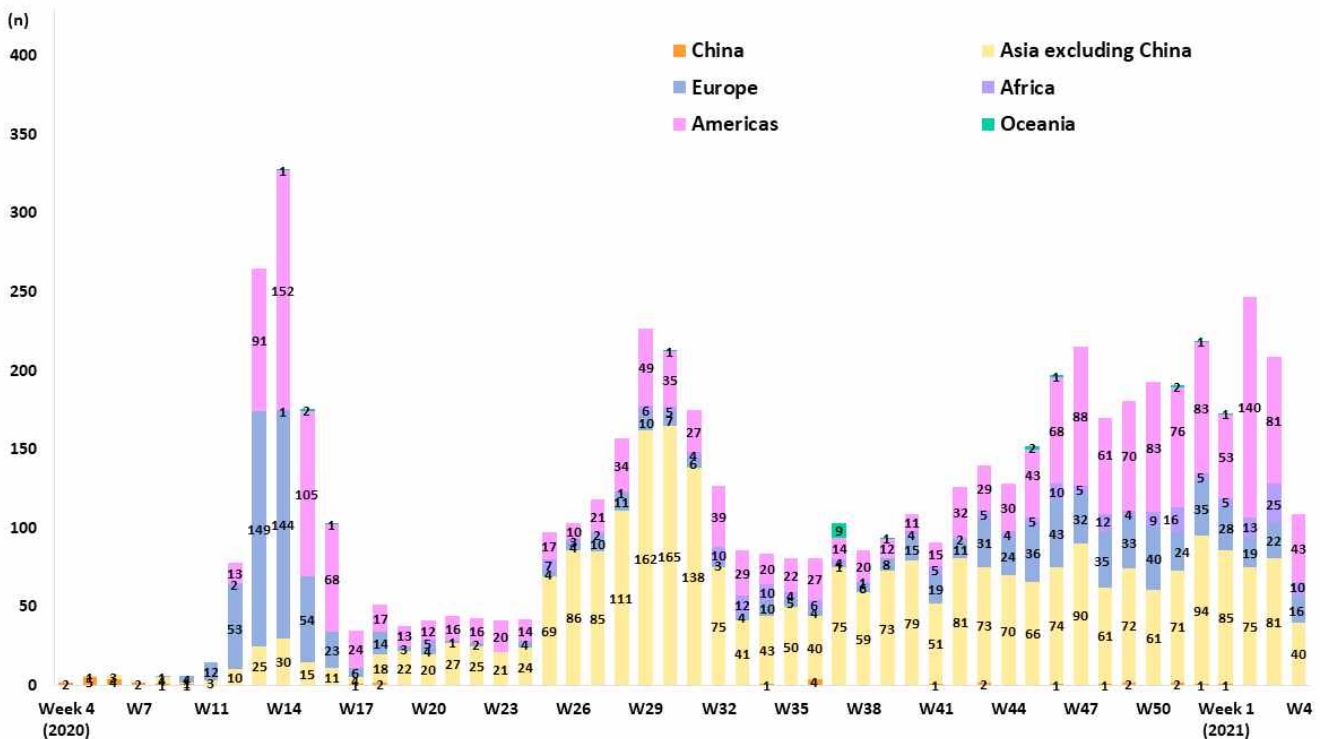
Updates on COVID-19 in Republic of Korea

20 January 2021

NEW CASES (LAST 2 WEEKS) BY CHAIN OF TRANSMISSION



IMPORTED CASES





KDCA

Korea Disease Control and Prevention Agency

Updates on COVID-19 in Republic of Korea

20 January 2021

REGIONAL DISTRIBUTION AND EPIDEMIOLOGICAL LINKS OF CONFIRMED CASES

| Region | Confirmed cases | | | | | | | | | Other major clusters |
|-----------------|-----------------|----------------|------------------|----------------------|----------------------|------------------|------------------|---------------------|-----------|--|
| | Total | Imported cases | Clusters | | | | Other* | Under investigation | New cases | |
| | | | Sub-total | Shin-cheonji cluster | Other local clusters | Imported related | | | | |
| Seoul | 22,859 | 741 | 8,344 | 8 | 8,249 | 87 | 7,800 | 5,974 | 143 | Past large clusters: • Sarang Jeil Church (1173) • Aug 15 Seoul rallies (650) • Seoul Gangseo-gu dance lessons (329) • Nightclubs (277) • Yongjin Woori Jeil Church (221) • Richway (210) • Guro-gu call center (170) • Coupang fulfillment center (152) • Gwangju door-to-door sales (150) • Seoul Noryangjin teacher appointment exam preparation classes (112) • Newly planted churches group (119) • Yongsan Construction Site (123) • Gangseo Religious Facility (258) |
| Busan | 2,455 | 109 | 1,420 | 12 | 1,353 | 55 | 593 | 333 | 13 | |
| Daegu | 8,188 | 118 | 6,038 | 4,512 | 1,519 | 7 | 1,132 | 900 | 12 | |
| Incheon | 3,596 | 187 | 1,698 | 2 | 1,687 | 9 | 1,124 | 587 | 16 | |
| Gwangju | 1,463 | 104 | 1,078 | 9 | 1,063 | 6 | 164 | 117 | 11 | |
| Daejeon | 958 | 47 | 467 | 2 | 464 | 1 | 287 | 157 | 1 | |
| Ulsan | 903 | 75 | 642 | 16 | 622 | 4 | 115 | 71 | 3 | |
| Sejong | 172 | 24 | 77 | 1 | 75 | 1 | 43 | 28 | 0 | |
| Gyeonggi | 18,517 | 1,284 | 6,839 | 29 | 6,736 | 74 | 6,548 | 3,846 | 139 | |
| Gangwon | 1,573 | 56 | 861 | 17 | 843 | 1 | 430 | 226 | 11 | |
| Chungbuk | 1,481 | 81 | 780 | 6 | 767 | 7 | 392 | 228 | 3 | |
| Chungnam | 1,926 | 130 | 948 | 0 | 947 | 1 | 512 | 336 | 8 | |
| Jeonbuk | 997 | 92 | 675 | 1 | 673 | 1 | 138 | 92 | 2 | |
| Jeonnam | 678 | 62 | 458 | 1 | 455 | 2 | 97 | 61 | 9 | |
| Gyeongbuk | 2,810 | 119 | 1,944 | 565 | 1,379 | 0 | 459 | 288 | 7 | |
| Gyeongnam | 1,817 | 133 | 1,081 | 33 | 1,021 | 27 | 363 | 240 | 19 | |
| Jeju | 506 | 30 | 288 | 0 | 287 | 1 | 119 | 69 | 6 | |
| Points of Entry | 2,619 | 2,619 | 0 | 0 | 0 | 0 | 0 | 0 | 1 | |
| Total | 73,518 (%) | 6,011 (8.2) | 33,638 (45.8) | 5,214 (7.1) | 28,140 (38.3) | 284 (0.4) | 20,316 (27.6) | 13,553 (18.4) | 404 | |

* Includes contacts of confirmed cases

※ The interim classification is based on the reporting location, which may change depending on further epidemiological investigation.