



KDCA

Korea Disease Control and Prevention Agency

# Updates on COVID-19 in Republic of Korea

29 March 2021

## Local transmission cases as of 0:00 today (cumulative since 3 January 2020)

	Total	City							
		Seoul	Busan	Daegu	Incheon	Gwangju	Daejeon	Ulsan	Sejong
<b>New</b>	<b>370</b>	<b>105</b>	<b>53</b>	<b>9</b>	<b>18</b>	<b>2</b>	<b>2</b>	<b>3</b>	<b>0</b>
<b>Cumulative</b>	<b>94,582</b>	<b>30,748</b>	<b>3,561</b>	<b>8,737</b>	<b>4,767</b>	<b>2,065</b>	<b>1,211</b>	<b>1,040</b>	<b>224</b>

	Total	Province							
		Gyeonggi	Gangwon	Chung-buk	Chung-nam	Jeon-buk	Jeon-nam	Gyeong-buk	Gyeong-nam
<b>New</b>	<b>130</b>	<b>6</b>	<b>12</b>	<b>1</b>	<b>8</b>	<b>0</b>	<b>3</b>	<b>18</b>	<b>0</b>
<b>Cumulative</b>	<b>26,733</b>	<b>2,222</b>	<b>2,040</b>	<b>2,444</b>	<b>1,288</b>	<b>840</b>	<b>3,315</b>	<b>2,761</b>	<b>586</b>

## Imported cases, as of 0:00 today (cumulative since 3 January 2020)

	Total	Region/Country						Where confirmed		Nationality	
		China	Asia ex-China	Europe	America	Africa	Oceania	Point of Entry	Community	Korean	Other
<b>New</b>	<b>14</b>	<b>0</b>	<b>7</b>	<b>3</b>	<b>2</b>	<b>2</b>	<b>0</b>	<b>5</b>	<b>9</b>	<b>9</b>	<b>5</b>
<b>Total</b>	<b>7,559</b>	<b>42</b> (0.6%)	<b>3,390</b> (44.8%)	<b>1,301</b> (17.2%)	<b>2,426</b> (32.1%)	<b>377</b> (5.0%)	<b>23</b> (0.3%)	<b>3,149</b> (41.7%)	<b>4,410</b> (58.3%)	<b>4,045</b> (53.5%)	<b>3,514</b> (46.5%)

\* Asia excluding China: Philippines 3, India 1, Russia 1, Indonesia 1, UAE 1,  
 Europe: Turkey 1, Poland 1, Hungary 1,  
 America: US 2,  
 Africa: Nigeria 1, Malawi 1

## Case status, as of 0:00 today (cumulative since 3 January 2020)

	Discharged from isolation	Under isolation	Severe/critical cases	Deceased
<b>As of 0:00 28 March 2021 (Sun)</b>	<b>93,855</b>	<b>6,180</b>	<b>104</b>	<b>1,722</b>
<b>As of 0:00 29 March 2021 (Mon)</b>	<b>94,124</b>	<b>6,291</b>	<b>100</b>	<b>1,726</b>
<b>Difference</b>	<b>(+)269</b>	<b>(+)111</b>	<b>(-)4</b>	<b>(+)4</b>

\* Based on case data reported to the KDCA

\*\* Severe/Critical: COVID-19 patients in isolation being treated with high flow oxygen therapy, mechanical ventilator, ECMO (Extracorporeal Membrane Oxygenation), CRRT (Continuous Renal Replacement Therapy)

※ Figures subject to correction based on findings from epidemiological investigations



KDCA

Korea Disease Control and Prevention Agency

# Updates on COVID-19 in Republic of Korea

29 March 2021

## Recent major local clusters as of 12:00 today

Location	Cluster	New cases	Total cases
Seoul Gwanak-gu	Church	13	14
Seoul Gwanak-gu	Workplace	2	47
Incheon Jung-gu	Logistics center	19	20
Gyeonggi Yeoncheon-gun	Dance lesson studio	14	15
Gyeonggi Seongnam-si	Singing room	3	50
Gyeonggi Yongin-si	Church / workplace	7	21
Daejeon Seo-gu	Pub	2	17
Chungbuk Cheongju-si	English academy	6	14
Daegu Dong-gu	Bath house	3	22
Busan	Singing pub	70	71
Busan Yeonje-gu	Elderly welfare center	9	32
Gyeongnam Jinju-si	Bath house 2	5	246
Gangwon Donghae-si	Family and restaurant	2	39

\* The specific figures may differ from the daily reported statistics or figures disclosed by local municipalities due to factors such as report timing and differences in the time period considered

## Weekly risk assessment indicators

	2.28.~3.6.	3.7.~3.13.	3.14.~3.20.	3.21.~3.27.
Daily average confirmed cases (n)	Local	371.7	428.3	415.1
	Imported	19.4	17.6	17.4
	Total	391.1	445.9	432.6
Cases with chain of transmission under investigation (%) <sup>(n)</sup>	22.2(608/2,738)	22.3(695/3,121)	26.7(809/3,028)	27.1(834/3,074)
Percentage under management <sup>1)</sup>	47.0	40.0	38.4	38.6
Reproduction number (Rt)	0.94	1.07	1.03	0.99
New clusters	55 (▲5 <sup>2)</sup> )	69 (▲22 <sup>2)</sup> )	36(▲19 <sup>2)</sup> )	13 <sup>3)</sup>
Average critical/severe patients (n)	134	125	101	106
Number of deaths (n)	37	35	26	28
Number of ICU available	582	604	611	620

<sup>1)</sup> Of the new cases, percent confirmed while under quarantine

<sup>2)</sup> Reclassified as belonging to a cluster due to epidemiological link found

<sup>3)</sup> Figure not final due to ongoing investigation

※ All figures subject to change upon new findings from investigation



KDCA

Korea Disease Control and  
Prevention Agency

# Updates on COVID-19 in Republic of Korea

29 March 2021

## COVID-19 vaccination status as of 0:00 today (cumulative since 26 February 2021)

	New	Total
1 <sup>st</sup> dose	11	793,966
2 <sup>nd</sup> dose	0	5,232

※ Figures based on recorded data and subject to correction

## Adverse events following COVID-19 vaccination reported as of 0:00 today (cumulative since 26 February 2021)

		Vaccinated (cumulative)	Total	%	General <sup>1)</sup>	Anaphylaxis suspected <sup>2)</sup>	Severe suspected <sup>3)</sup>	Deaths
Total	New	799,198	47	1.29%	47	0	0	0
	Total		10,347		10,215	101	10	21
AstraZeneca	New	733,586	15	1.37%	15	0	0	0
	Total		10,026		9,906	89	10	21
Pfizer	New	65,612	32	0.49%	32	0	0	0
	Total		321		309	12	0	0

<sup>1)</sup> Mild cases such as headache, fever, nausea, vomiting, etc.

<sup>2)</sup> Anaphylactoid reaction and anaphylactic shock suspected cases reported by healthcare institution; Anaphylactoid reaction refers to occurrence of symptoms such as shortness of breath, rashes, etc. within 2 hours of vaccination and differs from anaphylaxis

<sup>3)</sup> Includes convulsion and other nervous system response and ICU admitted cases

※ Cases reported as suspected cases of AEFI; causal association not yet determined; investigation for assessment of causal association to take place for deaths or anaphylaxis cases



KDCA

Korea Disease Control and Prevention Agency

# Updates on COVID-19 in Republic of Korea

29 March 2021

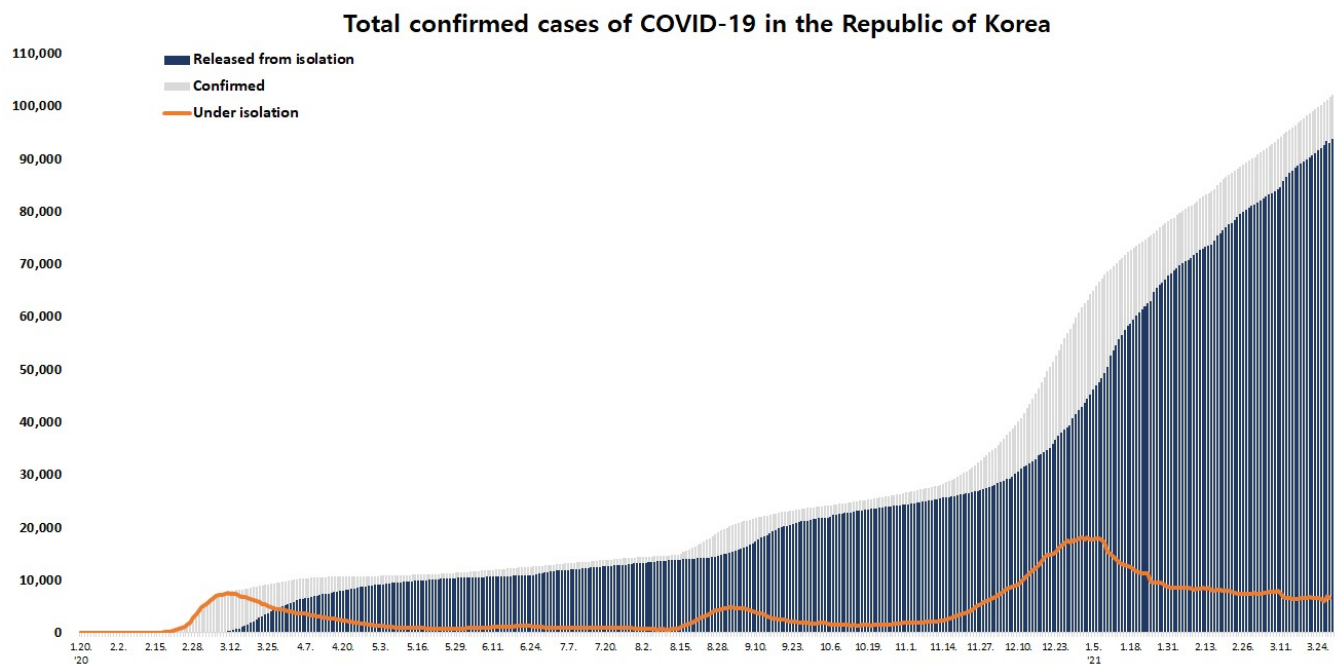
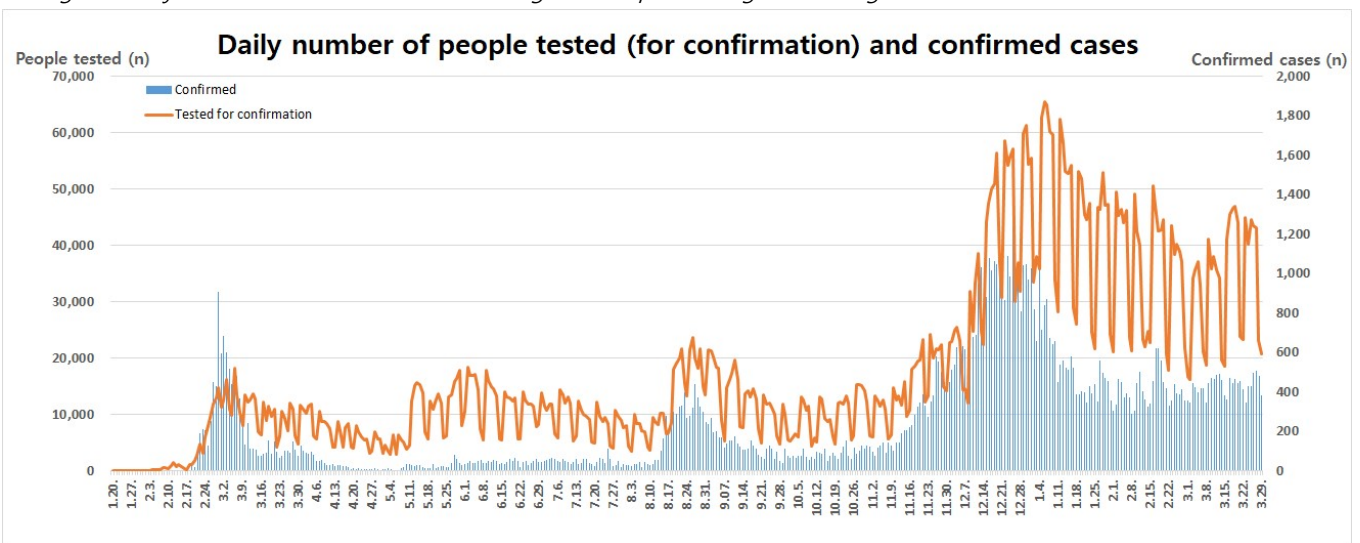
Overall case and test status as of 0:00 today (cumulative since 3 January 2020)

Period (since 3 Jan)	Total	Tested positive (PCR)				Testing in progress	Tested negative (PCR)
		Confirmed	Discharged from isolation	Under isolation	Deceased		
As of 0:00 28 March 2021 (Sun)	7,595,596	101,757	93,855	6,180	1,722	78,605	7,415,234
As of 0:00 29 March 2021 (Mon)	7,616,331	102,141	94,124	6,291	1,726	78,938	7,435,252
Difference	+20,735	+384	+269	+111	+4	+333	+20,018

\* Based on case data reported to the KDCA

\*\* Testing in progress includes number of completed tests with negative results that are being recorded with delays

※ Figures subject to correction based on findings from epidemiological investigations





KDCA

Korea Disease Control and  
Prevention Agency

# Updates on COVID-19 in Republic of Korea

29 March 2021

## Regional distribution of cases as of 0:00 today (cumulative since 3 January 2020)

Region	New cases		Total cases	(% )	Incidence rate* (per 100,000)
	Local	Imported			
Seoul	105	2	31,731	(31.07)	326.00
Busan	53	0	3,705	(3.63)	108.59
Daegu	9	1	8,904	(8.72)	365.44
Incheon	18	0	5,015	(4.91)	169.65
Gwangju	2	0	2,206	(2.16)	151.44
Daejeon	2	0	1,268	(1.24)	86.02
Ulsan	3	0	1,140	(1.12)	99.39
Sejong	0	0	251	(0.25)	73.32
Gyeonggi	130	1	28,354	(27.76)	213.99
Gangwon	6	0	2,301	(2.25)	149.36
Chungbuk	12	1	2,142	(2.10)	133.93
Chungnam	1	0	2,618	(2.56)	123.35
Jeonbuk	8	0	1,406	(1.38)	77.37
Jeonnam	0	1	913	(0.89)	48.96
Gyeongbuk	3	0	3,493	(3.42)	131.19
Gyeongnam	18	2	2,922	(2.86)	86.93
Jeju	0	1	623	(0.61)	92.88
Border Screening	0	5	3,149	(3.08)	-
<b>Total</b>	<b>370</b>	<b>14</b>	<b>102,141</b>	<b>(100)</b>	<b>197.00</b>

\* Total (cumulative) number of cases reported since January 2020 of region / Population of region (based on resident registration data of the Ministry of the Interior as of January 2020)

\* Incidence rate based on the number of confirmed cases with the address of the reporting institution



KDCA

Korea Disease Control and Prevention Agency

# Updates on COVID-19 in Republic of Korea

29 March 2021

## Confirmed cases by gender and age group

		New cases (%)	Total cases (%)	Incidence rate* (per 100,000)
Total		384 (100)	102,141 (100)	197.00
Sex	Male	199 (51.82)	50,707 (49.64)	196.06
	Female	185 (48.18)	51,434 (50.36)	197.94
Age	80 or above	9 (2.34)	4,725 (4.63)	248.79
	70-79	24 (6.25)	7,584 (7.43)	210.25
	60-69	59 (15.36)	15,868 (15.54)	250.11
	50-59	81 (21.09)	18,859 (18.46)	217.60
	40-49	67 (17.45)	14,822 (14.51)	176.68
	30-39	45 (11.72)	13,703 (13.42)	194.50
	20-29	53 (13.80)	15,329 (15.01)	225.21
	10-19	33 (8.59)	6,934 (6.79)	140.35
	0-9	13 (3.39)	4,317 (4.23)	104.06

\* Total (cumulative) number of cases reported since January 2020 by sex and age / Population by sex and age (based on resident registration data of the Ministry of the Interior as of January 2020)

※ Figures subject to correction based on findings from epidemiological investigations

1) Corrected local reporting error (Feb 25, 0:00, Daegu local transmission -1)

## Deaths by gender and age group

		New deaths (%)	Total deaths (%)	Case fatality rate (%)
Total		4 (100)	1,726 (100)	1.69
Sex	Male	1 (25.00)	859 (49.77)	1.69
	Female	3 (75.00)	867 (50.23)	1.69
Age	80 or above	3 (75.00)	962 (55.74)	20.36
	70-79	1 (25.00)	484 (28.04)	6.38
	60-69	0 (0.00)	198 (11.47)	1.25
	50-59	0 (0.00)	58 (3.36)	0.31
	40-49	0 (0.00)	14 (0.81)	0.09
	30-39	0 (0.00)	7 (0.41)	0.05
	20-29	0 (0.00)	3 (0.17)	0.02
	10-19	0 (0.00)	0 (0.00)	0.00
	0-9	0 (0.00)	0 (0.00)	0.00

\* Case fatality rate (CFR) (%) = Number of deaths / Number of confirmed cases x 100

※ Figures subject to correction based on findings from epidemiological investigations



KDCA

Korea Disease Control and  
Prevention Agency

# Updates on COVID-19 in Republic of Korea

29 March 2021

## AGE DISTRIBUTION OF SEVERE/CRITICAL CASES

	3.16.	3.17.	3.18.	3.19.	3.20.	3.21.	3.22.	3.23.	3.24.	3.25.	3.26.	3.27.	3.28.	3.29.
<b>Total</b>	103	100	100	101	102	104	103	101	111	111	111	103	104	100

	Severe/Critical	( % )
<b>Total</b>	<b>100</b>	<b>( 100.0 )</b>
80 and above	26	( 26.0 )
70-79	32	( 32.0 )
60-69	36	( 36.0 )
50-59	4	( 4.0 )
40-49	2	( 2.0 )
30-39	0	( 0.0 )
20-29	0	( 0.0 )
10-19	0	( 0.0 )
0-9	0	( 0.0 )

\* Severe/Critical: COVID-19 patients in isolation being treated with high flow oxygen therapy, mechanical ventilator, ECMO (Extracorporeal Membrane Oxygenation), CRRT (Continuous Renal Replacement Therapy)

\* ICU treatment is decided based on the need for intensive care based on factors such as clinical condition and presence of any underlying medical condition and may differ from severe and critical case classification criteria. The number of severe/critical cases may not match the number of patients in ICU.

※ Figures subject to correction based on findings from epidemiological investigations



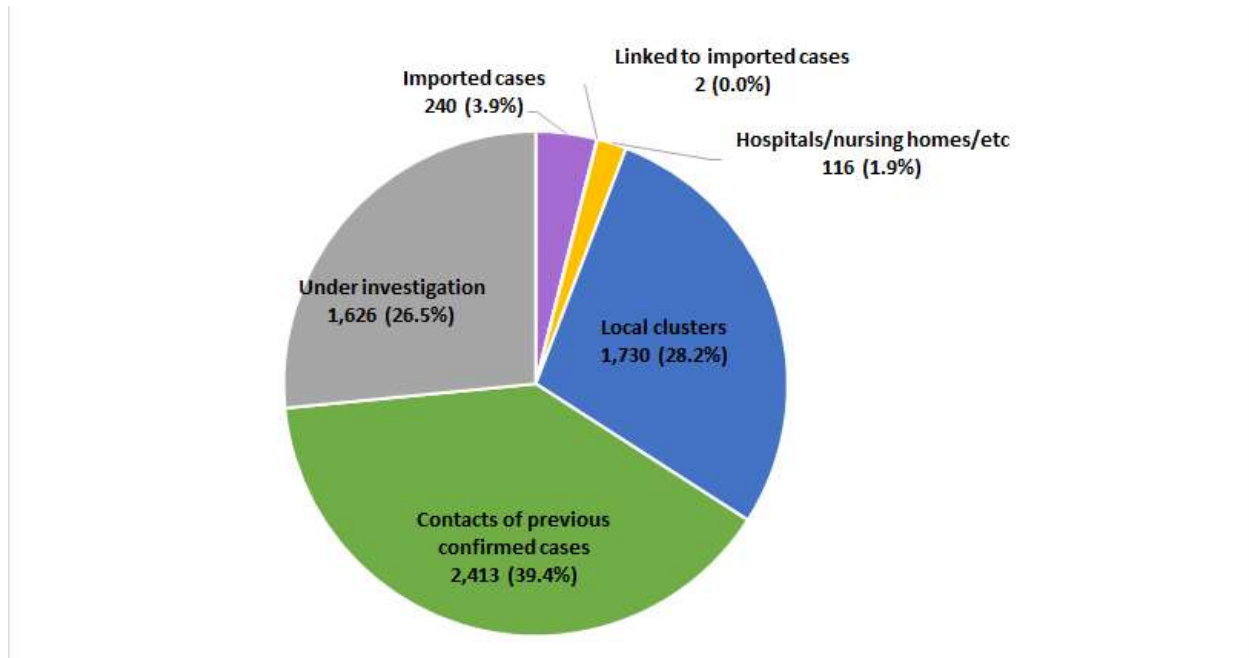
KDCA

Korea Disease Control and Prevention Agency

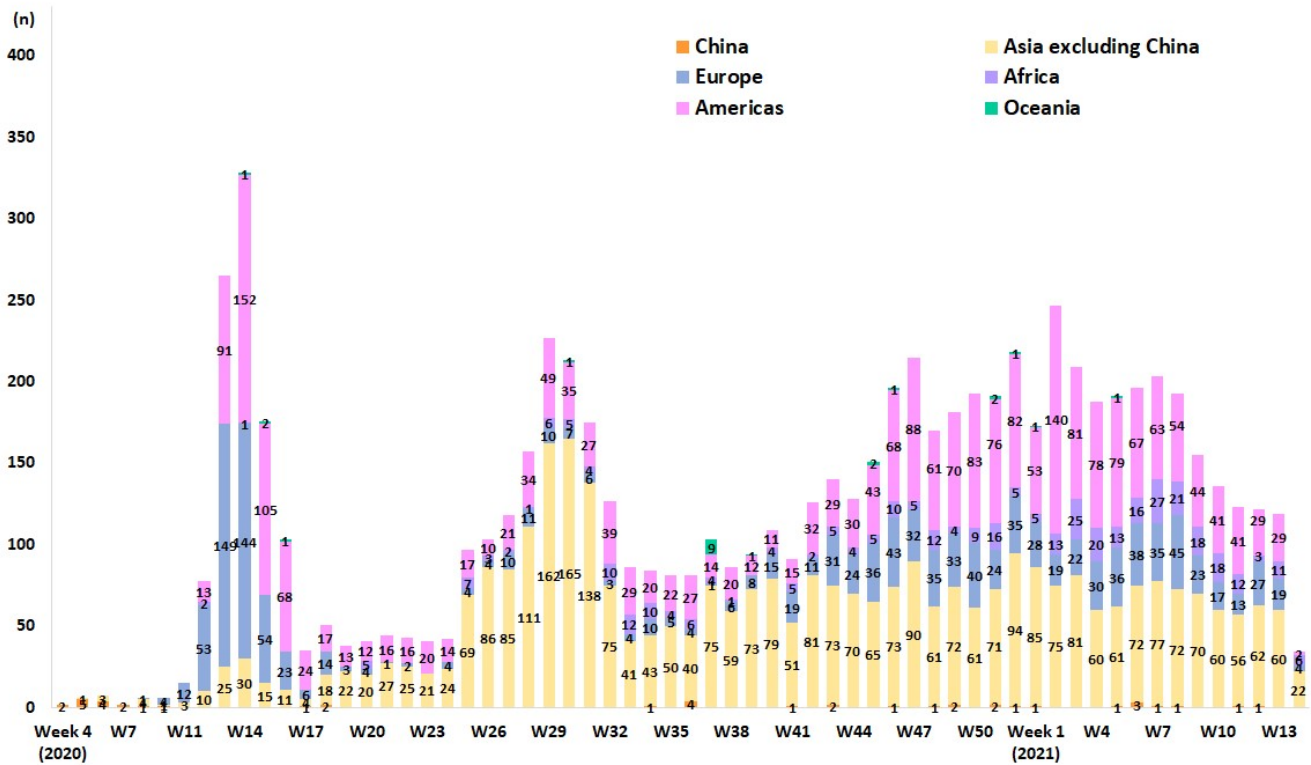
# Updates on COVID-19 in Republic of Korea

29 March 2021

## NEW CASES (LAST 2 WEEKS) BY CHAIN OF TRANSMISSION



## IMPORTED CASES







KDCA

Korea Disease Control and Prevention Agency

# Updates on COVID-19 in Republic of Korea

29 March 2021

## REGIONAL DISTRIBUTION AND EPIDEMIOLOGICAL LINKS OF CONFIRMED CASES

Region	Confirmed cases									Other major clusters
	Total	Imported cases	Clusters				Other*	Under investigation	New cases	
			Sub-total	Shin-cheonji cluster	Other local clusters	Imported related				
Seoul	31,731	983	11,736	8	11,625	103	10,523	8,489	107	Past large clusters: • Sarang Jeil Church (1173) • Aug 15 Seoul rallies (650) • Seoul Gangseo-gu dance lessons (329) • Seoul Jongno-gu restaurant / singing class (315) • Nightclubs (277) • Yongjin Woori Jeil Church (221) • Richway (210) • Guro-gu call center (170) • Coupang fulfillment center (152) • Gwangju door-to-door sales (150) • Seoul Noryangjin teacher appointment exam preparation classes (112) • Newly planted churches group (119) • Gangseo-gu religious facility (258) • Chungbuk hospitals (472) • Gyeongbuk Sangju-si BTJ (808) • Busan/Ulsan janggu lessons (268) • Gyeongnam Jinju-si prayer house (120) • Yongsan-gu construction site (123)
Busan	3,705	144	2,245	12	2,175	58	792	524	53	
Daegu	8,904	167	6,590	4,512	2,070	8	1,145	1,002	10	
Incheon	5,015	248	2,209	2	2,197	10	1,702	856	18	
Gwangju	2,206	141	1,765	9	1,750	6	144	156	2	
Daejeon	1,268	57	657	2	654	1	352	202	2	
Ulsan	1,140	100	811	16	790	5	145	84	3	
Sejong	251	27	122	1	120	1	51	51	0	
Gyeonggi	28,354	1,621	11,119	29	11,011	79	9,593	6,021	131	
Gangwon	2,301	79	1,230	17	1,212	1	655	337	6	
Chungbuk	2,142	102	1,192	6	1,179	7	519	329	13	
Chungnam	2,618	174	1,360	0	1,359	1	663	421	1	
Jeonbuk	1,406	118	982	1	980	1	156	150	8	
Jeonnam	913	73	641	1	629	11	105	94	1	
Gyeongbuk	3,493	178	2,421	565	1,852	4	494	400	3	
Gyeongnam	2,922	161	1,873	33	1,807	33	493	395	20	
Jeju	623	37	386	0	385	1	110	90	1	
Points of Entry	3,149	3,149	0	0	0	0	0	0	5	
Total	102,141 (%)	7,559 (7.4)	47,339 (46.3)	5,214 (5.1)	41,795 (40.9)	330 (0.3)	27,642 (27.1)	19,601 (19.2)	384	

\* Includes contacts of confirmed cases

※ The interim classification is based on the reporting location, which may change depending on further epidemiological investigation.