



KDCA

Korea Disease Control and Prevention Agency

Updates on COVID-19 in Republic of Korea

31 March 2021

Local transmission cases as of 0:00 today (cumulative since 3 January 2020)

	Total	City							
		Seoul	Busan	Daegu	Incheon	Gwangju	Daejeon	Ulsan	Sejong
New	491	156	58	15	25	2	7	11	17
Cumulative	95,500¹⁾	31,044	3,661	8,760	4,810	2,068	1,229	1,054	243

	Total	Province							
		Gyeonggi	Gangwon	Chung-buk	Chung-nam	Jeon-buk	Jeon-nam	Gyeong-buk	Gyeong-nam
New	106	16	21	8	20	0	6	21	2
Cumulative	26,954¹⁾	2,251	2,087	2,456	1,333	840	3,325	2,797	588

¹⁾ Transmission link corrected based on epidemiological investigation findings: Imported → Local (Gyeonggi 3 cases: 2020.12.8. 1 case, 2020.12.16. 1 case, 2020.12.17. 1 case)

Imported cases, as of 0:00 today (cumulative since 3 January 2020)

	Total	Region/Country						Where confirmed		Nationality	
		China	Asia ex-China	Europe	America	Africa	Oceania	Point of Entry	Community	Korean	Other
New	15	0	7	3	4	1	0	7	8	10	5
Total	7,588¹⁾	42 (0.6%)	3,400¹⁾ (44.8%)	1,312¹⁾ (17.3%)	2,433¹⁾ (32.0%)	378 (5.0%)	23 (0.3%)	3,158 (41.6%)	4,430¹⁾ (58.4%)	4,065¹⁾ (53.6%)	3,523 (46.4%)

* Asia excluding China: Philippines 4, Indonesia 1, Bangladesh 2, Europe: Hungary 1, Poland 1, France 1, America: US 4, Africa: Sierra Leone 1

¹⁾ Changed presumed place of acquisition based on epidemiological investigation : Imported → Local +3, Community -3, Korean -3
- America -1 (2020.12.8. 0:00), Asia -1 (2020.12.16. 0:00), Europe -1 (2020.12.17. 0:00)

Case status, as of 0:00 today (cumulative since 3 January 2020)

	Discharged from isolation	Under isolation	Severe/critical cases	Deceased
As of 0:00 30 March 2021 (Tues)	94,563	6,290	102	1,729
As of 0:00 31 March 2021 (Wed)	95,030	6,327	108	1,731
Difference	(+)467	(+)37	(+)6	(+)2

* Based on case data reported to the KDCA

** Severe/Critical: COVID-19 patients in isolation being treated with high flow oxygen therapy, mechanical ventilator, ECMO (Extracorporeal Membrane Oxygenation), CRRT (Continuous Renal Replacement Therapy)

※ Figures subject to correction based on findings from epidemiological investigations



KDCA

Korea Disease Control and
Prevention Agency

Updates on COVID-19 in Republic of Korea

31 March 2021

Recent major local clusters as of 12:00 today

Location	Cluster	New cases	Total cases
Seoul Gangbuk-gu	Family / preschool	13	14
Seoul Gwangjin-gu	Middle school	10	11
Seoul Guro-gu	Sauna	7	24
Gyeonggi Seongnam-si	Foreigners gathering	2	40
Gyeonggi Suwon-si Paldal-gu	University hospital	1	15
Gyeonggi Yongin-si	Church / workplace	2	28
Daejeon Seo-gu	Pub	2	28
Sejong-si	Elementary school	10	11
Chungbuk Cheongju-si	Electric company	9	10
Chungbuk Boeun-gun	Research institute	6	7
Jeonbuk Jeonju-si	Farm	14	15
Jeonbuk Wanju-gun	Bath house	2	9
Daegu Jung-gu	Place of business	2	31
Busan	Singing pub	29	116
Busan Yeonje-gu	Elderly welfare center	12	47
Ulsan Buk-gu	Company / bath house	9	10
Ulsan Dong-gu	University hospital	4	5
Gangwon Wonju-si	Clinic	2	16
Gangwon Wonju-si	Preschool	12	13

* The specific figures may differ from the daily reported statistics or figures disclosed by local municipalities due to factors such as report timing and differences in the time period considered

Weekly risk assessment indicators

		2.28.~3.6.	3.7.~3.13.	3.14.~3.20.	3.21.~3.27.
Daily average confirmed cases (n)	Local	371.7	428.3	415.1	422.1
	Imported	19.4	17.6	17.4	17.0
	Total	391.1	445.9	432.6	439.1
Cases with chain of transmission under investigation (%) ⁽ⁿ⁾		22.2(608/2,738)	22.3(695/3,121)	26.7(809/3,028)	27.1(834/3,074)
Percentage under management ¹⁾		47.0	40.0	38.4	38.6
Reproduction number (Rt)		0.94	1.07	1.03	0.99
New clusters		55 (▲ ⁵ ²⁾)	69 (▲ ²² ²⁾)	36(▲ ¹⁹ ²⁾)	13 ³⁾
Average critical/severe patients (n)		134	125	101	106
Number of deaths (n)		37	35	26	28
Number of ICU available		582	604	611	620

¹⁾ Of the new cases, percent confirmed while under quarantine

²⁾ Reclassified as belonging to a cluster due to epidemiological link found

³⁾ Figure not final due to ongoing investigation

※ All figures subject to change upon new findings from investigation



KDCA

Korea Disease Control and
Prevention Agency

Updates on COVID-19 in Republic of Korea

31 March 2021

COVID-19 vaccination status as of 0:00 today (cumulative since 26 February 2021)

	New	Total
1 st dose	28,407	852,202
2 nd dose	2,034	8,185

※ Figures based on recorded data and subject to correction

Adverse events following COVID-19 vaccination reported as of 0:00 today (cumulative since 26 February 2021)

		Vaccinated (cumulative)	Total	%	General ¹⁾	Anaphylaxis suspected ²⁾	Severe suspected ³⁾	Deaths
Total	New	860,387	90	1.23%	82	1	3	4
	Total		10,575		10,430	106	13	26
AstraZeneca	New	791,454	84	1.29%	76	1	3	4
	Total		10,237		10,105	93	13	26
Pfizer	New	68,933	6	0.49%	6	0	0	0
	Total		338		325	13	0	0

¹⁾ Mild cases such as headache, fever, nausea, vomiting, etc.²⁾ Anaphylactoid reaction and anaphylactic shock suspected cases reported by healthcare institution; Anaphylactoid reaction refers to occurrence of symptoms such as shortness of breath, rashes, etc. within 2 hours of vaccination and differs from anaphylaxis³⁾ Includes convulsion and other nervous system response and ICU admitted cases

※ Cases reported as suspected cases of AEFI; causal association not yet determined; investigation for assessment of causal association to take place for deaths or anaphylaxis cases



KDCA

Korea Disease Control and Prevention Agency

Updates on COVID-19 in Republic of Korea

31 March 2021

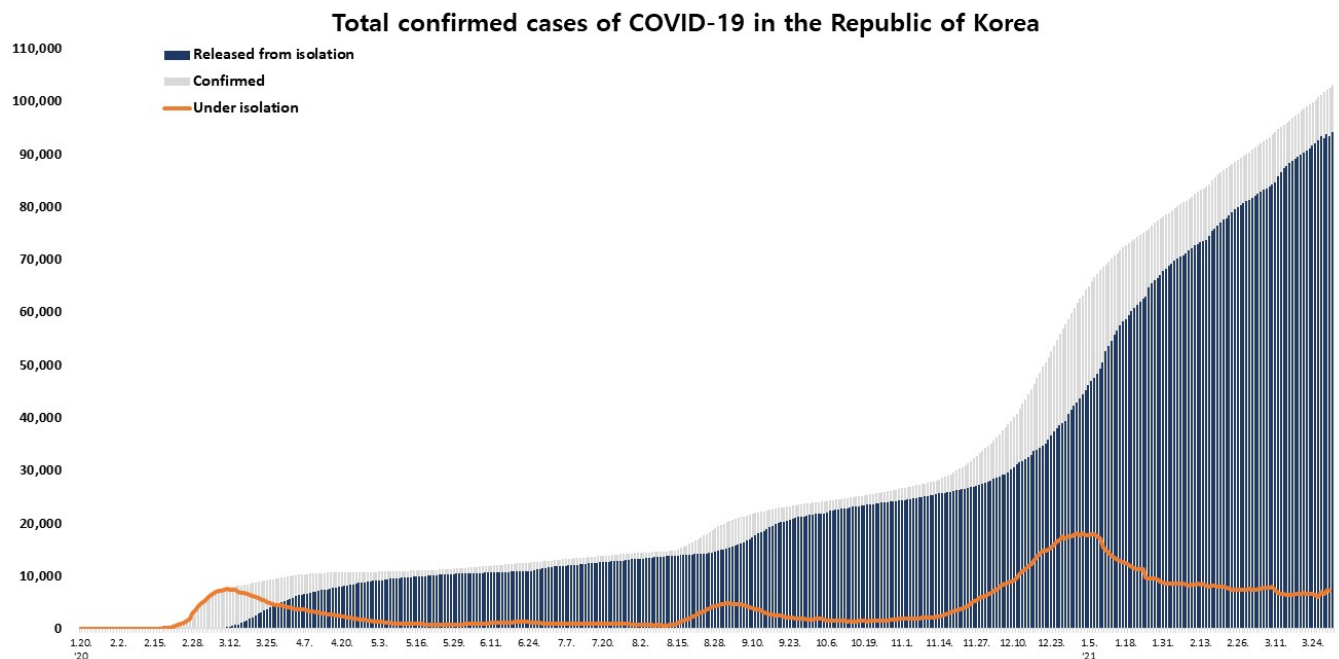
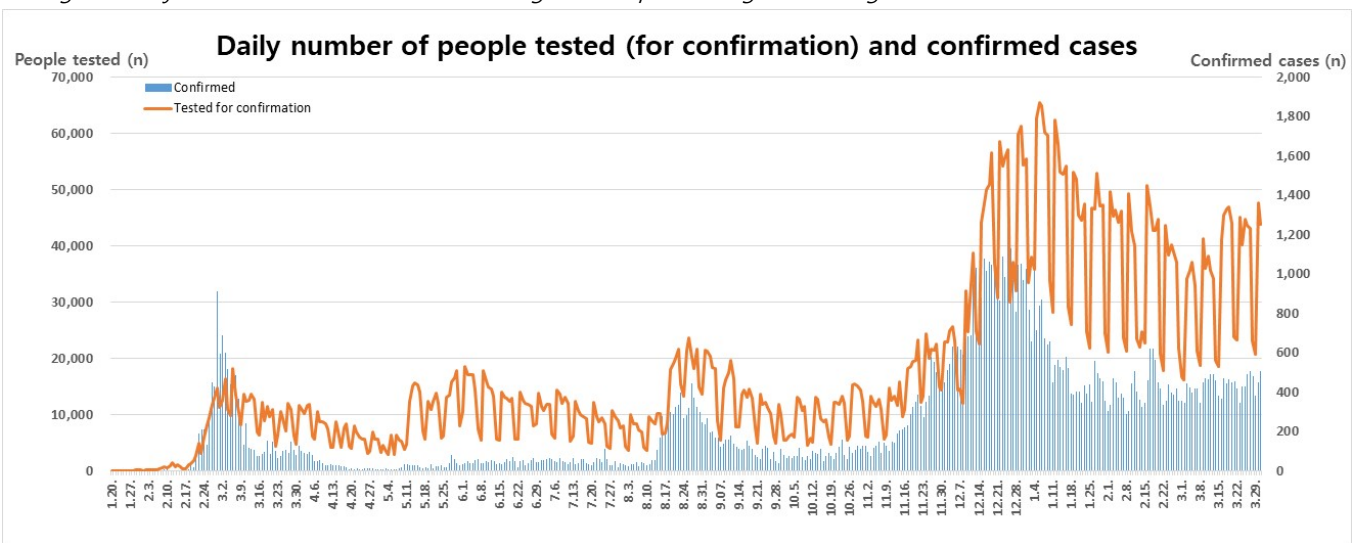
Overall case and test status as of 0:00 today (cumulative since 3 January 2020)

Period (since 3 Jan)	Total	Tested positive (PCR)				Testing in progress	Tested negative (PCR)
		Confirmed	Discharged from isolation	Under isolation	Deceased		
As of 0:00 30 March 2021 (Tues)	7,663,999	102,582	94,563	6,290	1,729	78,424	7,482,993
As of 0:00 31 March 2021 (Wed)	7,707,800	103,088	95,030	6,327	1,731	71,302	7,533,410
Difference	+43,801	+506	+467	+37	+2	-7,122	+50,417

* Based on case data reported to the KDCA

** Testing in progress includes number of completed tests with negative results that are being recorded with delays

※ Figures subject to correction based on findings from epidemiological investigations





KDCA

Korea Disease Control and
Prevention Agency

Updates on COVID-19 in Republic of Korea

31 March 2021

Regional distribution of cases as of 0:00 today (cumulative since 3 January 2020)

Region	New cases		Total cases	(%)	Incidence rate* (per 100,000)
	Local	Imported			
Seoul	156	2	32,034	(31.07)	329.11
Busan	58	0	3,806	(3.69)	111.55
Daegu	15	0	8,927	(8.66)	366.39
Incheon	25	0	5,058	(4.91)	171.10
Gwangju	2	0	2,209	(2.14)	151.65
Daejeon	7	0	1,286	(1.25)	87.24
Ulsan	11	0	1,154	(1.12)	100.61
Sejong	17	0	270	(0.26)	78.87
Gyeonggi	106	5	28,582	(27.73)	215.71
Gangwon	16	0	2,330	(2.26)	151.25
Chungbuk	21	0	2,190	(2.12)	136.93
Chungnam	8	0	2,631	(2.55)	123.96
Jeonbuk	20	0	1,451	(1.41)	79.84
Jeonnam	0	0	913	(0.89)	48.96
Gyeongbuk	6	0	3,504	(3.40)	131.61
Gyeongnam	21	1	2,960	(2.87)	88.06
Jeju	2	0	625	(0.61)	93.18
Border Screening	0	7	3,158	(3.06)	-
Total	491	15	103,088	(100)	198.83

* Total (cumulative) number of cases reported since January 2020 of region / Population of region (based on resident registration data of the Ministry of the Interior as of January 2020)

* Incidence rate based on the number of confirmed cases with the address of the reporting institution



KDCA

Korea Disease Control and
Prevention Agency

Updates on COVID-19 in Republic of Korea

31 March 2021

Confirmed cases by gender and age group

		New cases (%)	Total cases (%)	Incidence rate* (per 100,000)
Total		506 (100)	103,088 (100)	198.83
Sex	Male	238 (47.04)	51,183 (49.65)	197.90
	Female	268 (52.96)	51,905 (50.35)	199.75
Age	80 or above	19 (3.75)	4,753 (4.61)	250.26
	70-79	27 (5.34)	7,636 (7.41)	211.69
	60-69	65 (12.85)	15,992 (15.51)	252.07
	50-59	81 (16.01)	19,016 (18.45)	219.41
	40-49	101 (19.96)	15,007 (14.56)	178.88
	30-39	73 (14.43)	13,839 (13.42)	196.43
	20-29	68 (13.44)	15,464 (15.00)	227.20
	10-19	38 (7.51)	7,010 (6.80)	141.89
	0-9	34 (6.72)	4,371 (4.24)	105.36

* Total (cumulative) number of cases reported since January 2020 by sex and age / Population by sex and age (based on resident registration data of the Ministry of the Interior as of January 2020)

※ Figures subject to correction based on findings from epidemiological investigations

1) Corrected local reporting error (Feb 25, 0:00, Daegu local transmission -1)

Deaths by gender and age group

		New deaths (%)	Total deaths (%)	Case fatality rate (%)
Total		2 (100)	1,731 (100)	1.68
Sex	Male	1 (50.00)	862 (49.80)	1.68
	Female	1 (50.00)	869 (50.20)	1.67
Age	80 or above	1 (50.00)	965 (55.75)	20.30
	70-79	0 (0.00)	485 (28.02)	6.35
	60-69	1 (50.00)	199 (11.50)	1.24
	50-59	0 (0.00)	58 (3.35)	0.31
	40-49	0 (0.00)	14 (0.81)	0.09
	30-39	0 (0.00)	7 (0.40)	0.05
	20-29	0 (0.00)	3 (0.17)	0.02
	10-19	0 (0.00)	0 (0.00)	0.00
	0-9	0 (0.00)	0 (0.00)	0.00

* Case fatality rate (CFR) (%) = Number of deaths / Number of confirmed cases x 100

※ Figures subject to correction based on findings from epidemiological investigations



KDCA

Korea Disease Control and Prevention Agency

Updates on COVID-19 in Republic of Korea

31 March 2021

AGE DISTRIBUTION OF SEVERE/CRITICAL CASES

	3.18.	3.19.	3.20.	3.21.	3.22.	3.23.	3.24.	3.25.	3.26.	3.27.	3.28.	3.29.	3.30.	3.31.
Total	100	101	102	104	103	101	111	111	111	103	104	100	102	108

	Severe/Critical	(%)
Total	108	(100.0)
80 and above	23	(21.3)
70-79	37	(34.3)
60-69	39	(36.1)
50-59	7	(6.5)
40-49	2	(1.9)
30-39	0	(0.0)
20-29	0	(0.0)
10-19	0	(0.0)
0-9	0	(0.0)

* Severe/Critical: COVID-19 patients in isolation being treated with high flow oxygen therapy, mechanical ventilator, ECMO (Extracorporeal Membrane Oxygenation), CRRT (Continuous Renal Replacement Therapy)

* ICU treatment is decided based on the need for intensive care based on factors such as clinical condition and presence of any underlying medical condition and may differ from severe and critical case classification criteria. The number of severe/critical cases may not match the number of patients in ICU.

※ Figures subject to correction based on findings from epidemiological investigations



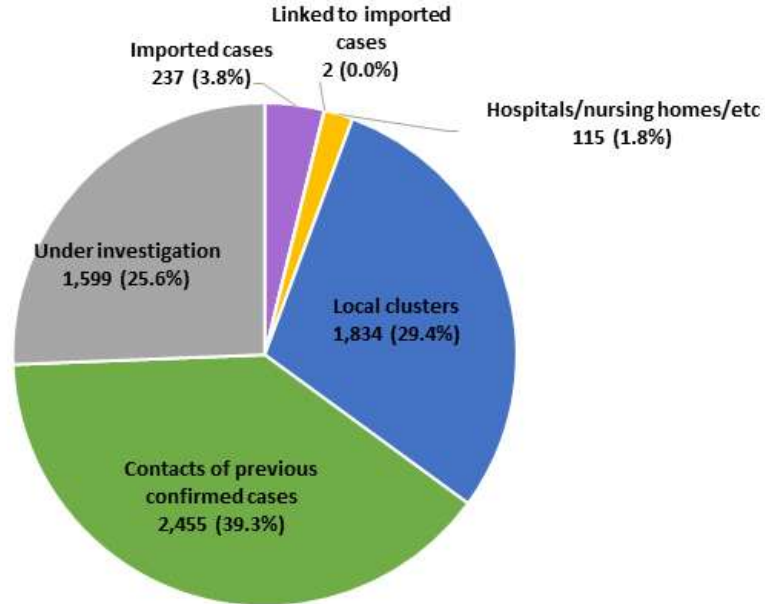
KDCA

Korea Disease Control and Prevention Agency

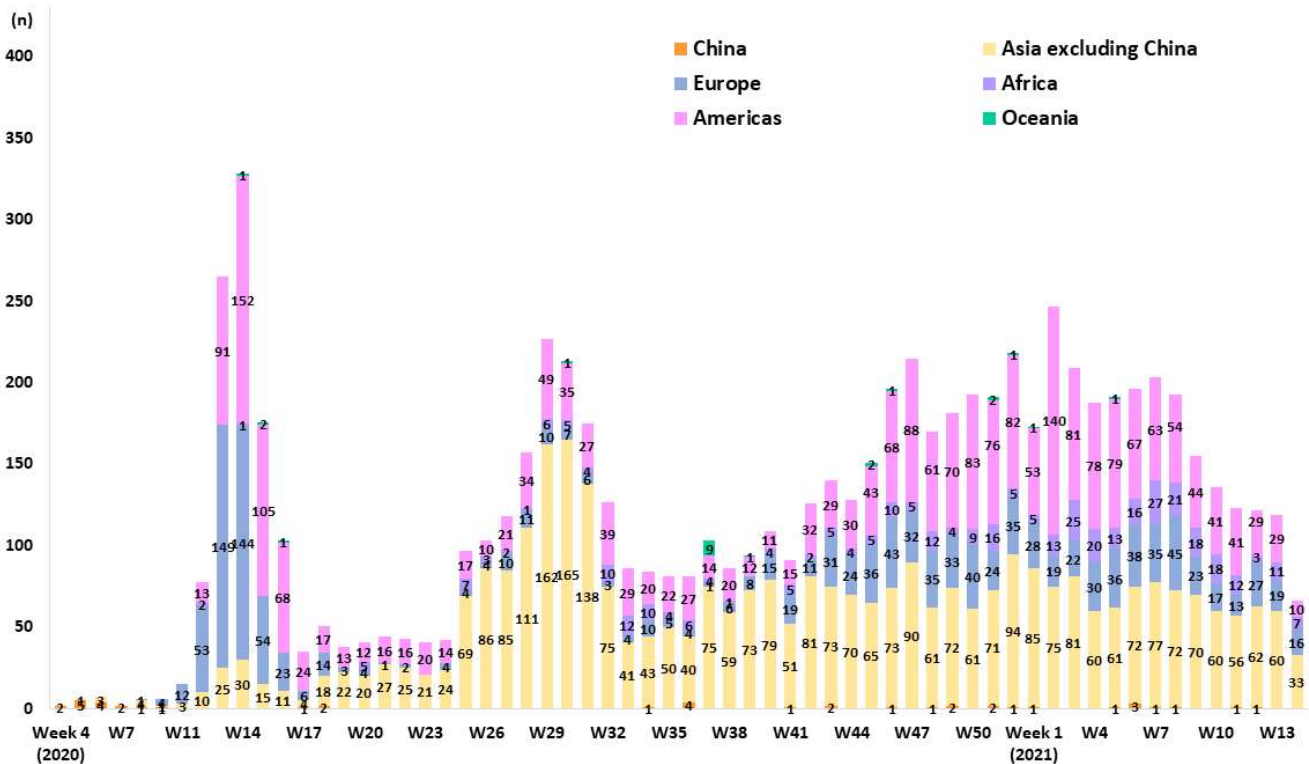
Updates on COVID-19 in Republic of Korea

31 March 2021

NEW CASES (LAST 2 WEEKS) BY CHAIN OF TRANSMISSION



IMPORTED CASES





KDCA

Korea Disease Control and Prevention Agency

Updates on COVID-19 in Republic of Korea

31 March 2021

REGIONAL DISTRIBUTION AND EPIDEMIOLOGICAL LINKS OF CONFIRMED CASES

Region	Confirmed cases									Other major clusters
	Total	Imported cases	Clusters				Other*	Under investigation	New cases	
			Sub-total	Shin-cheonji cluster	Other local clusters	Imported related				
Seoul	32,034	990	11,831	8	11,720	103	10,632	8,581	158	Past large clusters: • Sarang Jeil Church (1173) • Aug 15 Seoul rallies (650) • Seoul Gangseo-gu dance lessons (329) • Seoul Jongno-gu restaurant / singing class (315) • Nightclubs (277) • Yongjin Woori Jeil Church (221) • Richway (210) • Guro-gu call center (170) • Coupang fulfillment center (152) • Gwangju door-to-door sales (150) • Seoul Noryangjin teacher appointment exam preparation classes (112) • Newly planted churches group (119) • Gangseo-gu religious facility (258) • Chungbuk hospitals (472) • Gyeongbuk Sangju-si BTJ (808) • Busan/Ulsan janggu lessons (268) • Gyeongnam Jinju-si prayer house (120) • Yongsan-gu construction site (123)
Busan	3,806	145	2,306	12	2,236	58	813	542	58	
Daegu	8,927	167	6,607	4,512	2,087	8	1,152	1,001	15	
Incheon	5,058	248	2,222	2	2,210	10	1,726	862	25	
Gwangju	2,209	141	1,765	9	1,750	6	147	156	2	
Daejeon	1,286	57	662	2	659	1	363	204	7	
Ulsan	1,154	100	811	16	790	5	155	88	11	
Sejong	270	27	134	1	132	1	52	57	17	
Gyeonggi	28,582	1,628	11,262	29	11,154	79	9,640	6,052	111	
Gangwon	2,330	79	1,239	17	1,221	1	669	343	16	
Chungbuk	2,190	103	1,213	6	1,200	7	530	344	21	
Chungnam	2,631	175	1,361	0	1,360	1	671	424	8	
Jeonbuk	1,451	118	995	1	993	1	176	162	20	
Jeonnam	913	73	641	1	629	11	105	94	0	
Gyeongbuk	3,504	179	2,423	565	1,854	4	498	404	6	
Gyeongnam	2,960	163	1,883	33	1,817	33	513	401	22	
Jeju	625	37	388	0	387	1	109	91	2	
Points of Entry	3,158	3,158	0	0	0	0	0	0	7	
Total	103,088 (%)	7,588 (7.4)	47,743 (46.3)	5,214 (5.1)	42,199 (40.9)	330 (0.3)	27,951 (27.1)	19,806 (19.2)	506	

* Includes contacts of confirmed cases

※ The interim classification is based on the reporting location, which may change depending on further epidemiological investigation.