



KDCA

Korea Disease Control and Prevention Agency

Updates on COVID-19 in Republic of Korea

1 April 2021

Local transmission cases as of 0:00 today (cumulative since 3 January 2020)

	Total	City							
		Seoul	Busan	Daegu	Incheon	Gwangju	Daejeon	Ulsan	Sejong
New	537	197	53	7	20	1	10	5	13
Cumulative	96,037	31,241	3,714	8,767	4,830	2,069	1,239	1,059	256

	Total	Province							
		Gyeonggi	Gangwon	Chung-buk	Chung-nam	Jeon-buk	Jeon-nam	Gyeong-buk	Gyeong-nam
New	125	20	19	15	22	1	6	21	2
Cumulative	27,079	2,271	2,106	2,471	1,355	841	3,331	2,818	590

Imported cases, as of 0:00 today (cumulative since 3 January 2020)

	Total	Region/Country						Where confirmed		Nationality	
		China	Asia ex-China	Europe	America	Africa	Oceania	Point of Entry	Community	Korean	Other
New	14	0	5	7	2	0	0	2	12	10	4
Total	7,602	42 (0.6%)	3,405 (44.7%)	1,319 (17.4%)	2,435 (32.0%)	378 (5.0%)	23 (0.3%)	3,160 (41.6%)	4,442 (58.4%)	4,075 (53.6%)	3,527 (46.4%)

* Asia excluding China: Philippines 1, Indonesia 1, India 2, Pakistan 1
 Europe: UK 1, Turkey 2, Hungary 4,
 America: US 2

Case status, as of 0:00 today (cumulative since 3 January 2020)

	Discharged from isolation	Under isolation	Severe/critical cases	Deceased
As of 0:00 31 March 2021 (Wed)	95,030	6,327	108	1,731
As of 0:00 1 April 2021 (Thur)	95,439	6,465	107	1,735
Difference	(+)409	(+)138	(-1)	(+)4

* Based on case data reported to the KDCA

** Severe/Critical: COVID-19 patients in isolation being treated with high flow oxygen therapy, mechanical ventilator, ECMO (Extracorporeal Membrane Oxygenation), CRRT (Continuous Renal Replacement Therapy)

※ Figures subject to correction based on findings from epidemiological investigations



KDCA

Korea Disease Control and
Prevention Agency

Updates on COVID-19 in Republic of Korea

1 April 2021

Recent major local clusters as of 12:00 today

Location	Cluster	New cases	Total cases
Seoul Dobong-gu	Hospital	11	12
Seoul Songpa-gu	High school	10	11
Seoul Seocho-gu	Telemarketing	9	23
Gyeonggi Goyang-si	Day work / family	13	14
Sejong-si	Elementary school	10	21
Chungnam Dangjin	Family	6	7
Chungbuk Boeun-gun	Research institute	3	10
Jeonbuk Jeonju-si	High schoolers gathering	6	7
Jeonbuk Imsil-gun	Family gathering	7	8
Jeonbuk Jeonju-si	Bath house	4	13
Daegu Jung-gu	Place of business	3	34
Busan	Singing pub	20	136
Busan Yeonje-gu	Elderly welfare center	4	51
Busan Yeondo-gu	Church	10	11
Busan Dongnae-gu	Workplace	17	18

* The specific figures may differ from the daily reported statistics or figures disclosed by local municipalities due to factors such as report timing and differences in the time period considered

Weekly risk assessment indicators

		2.28.~3.6.	3.7.~3.13.	3.14.~3.20.	3.21.~3.27.
Daily average confirmed cases (n)	Local	371.7	428.3	415.1	422.1
	Imported	19.4	17.6	17.4	17.0
	Total	391.1	445.9	432.6	439.1
Cases with chain of transmission under investigation (%) ⁽ⁿ⁾		22.2(608/2,738)	22.3(695/3,121)	26.7(809/3,028)	27.1(834/3,074)
Percentage under management ¹⁾		47.0	40.0	38.4	38.6
Reproduction number (Rt)		0.94	1.07	1.03	0.99
New clusters		55 (▲5 ²⁾)	69 (▲22 ²⁾)	36(▲19 ²⁾)	13 ³⁾
Average critical/severe patients (n)		134	125	101	106
Number of deaths (n)		37	35	26	28
Number of ICU available		582	604	611	620

¹⁾ Of the new cases, percent confirmed while under quarantine

²⁾ Reclassified as belonging to a cluster due to epidemiological link found

³⁾ Figure not final due to ongoing investigation

※ All figures subject to change upon new findings from investigation



KDCA

Korea Disease Control and
Prevention Agency

Updates on COVID-19 in Republic of Korea

1 April 2021

COVID-19 vaccination status as of 0:00 today (cumulative since 26 February 2021)

	New	Total
1 st dose	22,643	876,573
2 nd dose	4,786	12,973

※ Figures based on recorded data and subject to correction

Adverse events following COVID-19 vaccination reported as of 0:00 today (cumulative since 26 February 2021)

		Vaccinated (cumulative)	Total	%	General ¹⁾	Anaphylaxis suspected ²⁾	Severe suspected ³⁾	Deaths
Total	New	889,546	123	1.20%	119	0	2	2
	Total		10,698		10,549	106	15	28
AstraZeneca	New	815,769	101	1.27%	97	0	2	2
	Total		10,338		10,202	93	15	28
Pfizer	New	73,777	22	0.49%	22	0	0	0
	Total		360		347	13	0	0

¹⁾ Mild cases such as headache, fever, nausea, vomiting, etc.²⁾ Anaphylactoid reaction and anaphylactic shock suspected cases reported by healthcare institution; Anaphylactoid reaction refers to occurrence of symptoms such as shortness of breath, rashes, etc. within 2 hours of vaccination and differs from anaphylaxis³⁾ Includes convulsion and other nervous system response and ICU admitted cases

※ Cases reported as suspected cases of AEFI; causal association not yet determined; investigation for assessment of causal association to take place for deaths or anaphylaxis cases



KDCA

Korea Disease Control and Prevention Agency

Updates on COVID-19 in Republic of Korea

1 April 2021

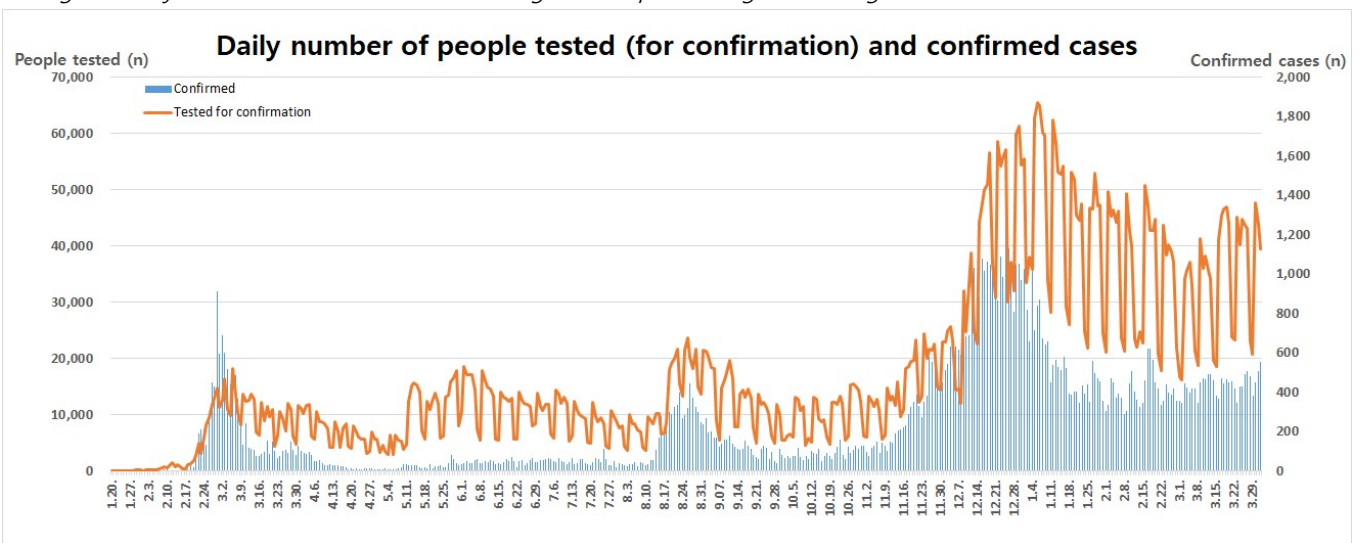
Overall case and test status as of 0:00 today (cumulative since 3 January 2020)

Period (since 3 Jan)	Total	Tested positive (PCR)				Testing in progress	Tested negative (PCR)
		Confirmed	Discharged from isolation	Under isolation	Deceased		
As of 0:00 31 March 2021 (Wed)	7,707,800	103,088	95,030	6,327	1,731	71,302	7,533,410
As of 0:00 1 April 2021 (Thur)	7,747,303	103,639	95,439	6,465	1,735	68,659	7,575,005
Difference	+39,503	+551	+409	+138	+4	-2,643	+41,595

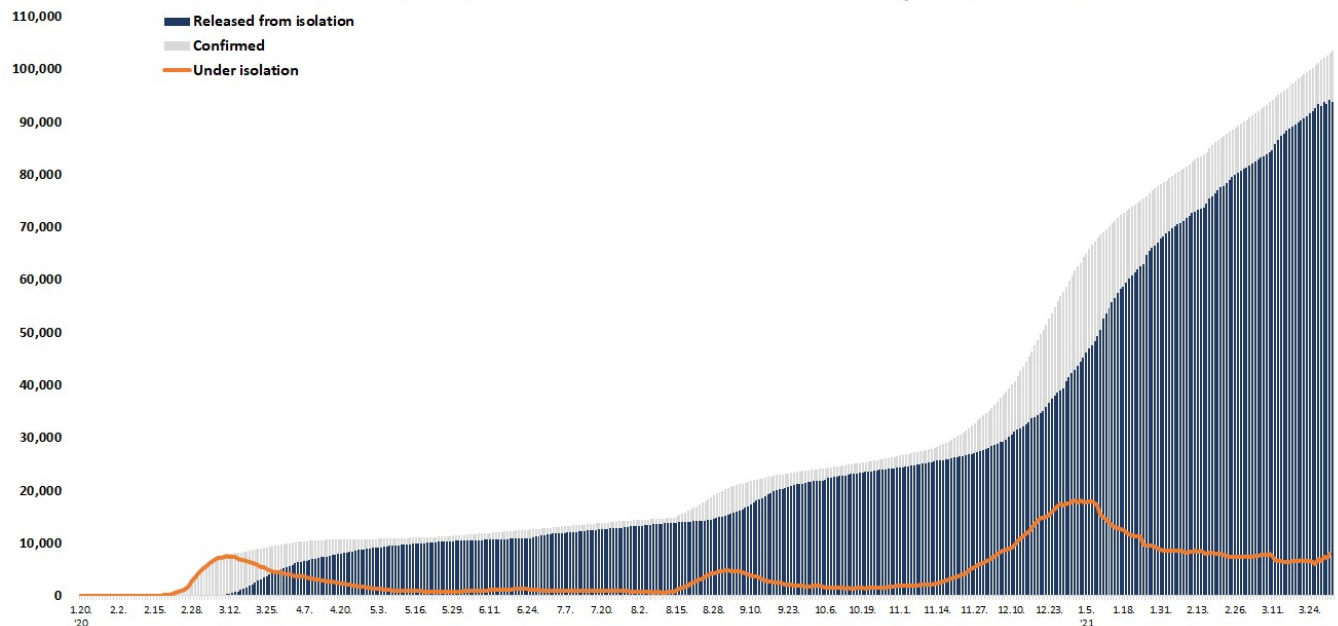
* Based on case data reported to the KDCA

** Testing in progress includes number of completed tests with negative results that are being recorded with delays

※ Figures subject to correction based on findings from epidemiological investigations



Total confirmed cases of COVID-19 in the Republic of Korea





KDCA

Korea Disease Control and
Prevention Agency

Updates on COVID-19 in Republic of Korea

1 April 2021

Regional distribution of cases as of 0:00 today (cumulative since 3 January 2020)

Region	New cases		Total cases	(%)	Incidence rate* (per 100,000)
	Local	Imported			
Seoul	197	2	32,233	(31.10)	331.15
Busan	53	1	3,860	(3.72)	113.14
Daegu	7	0	8,934	(8.62)	366.68
Incheon	20	0	5,078	(4.90)	171.78
Gwangju	1	2	2,212	(2.13)	151.85
Daejeon	10	0	1,296	(1.25)	87.91
Ulsan	5	0	1,159	(1.12)	101.04
Sejong	13	0	283	(0.27)	82.67
Gyeonggi	125	5	28,712	(27.70)	216.69
Gangwon	20	0	2,350	(2.27)	152.54
Chungbuk	19	1	2,210	(2.13)	138.18
Chungnam	15	0	2,646	(2.55)	124.67
Jeonbuk	22	0	1,473	(1.42)	81.05
Jeonnam	1	0	914	(0.88)	49.02
Gyeongbuk	6	1	3,511	(3.39)	131.87
Gyeongnam	21	0	2,981	(2.88)	88.68
Jeju	2	0	627	(0.60)	93.48
Border Screening	0	2	3,160	(3.05)	-
Total	537	14	103,639	(100)	199.89

* Total (cumulative) number of cases reported since January 2020 of region / Population of region (based on resident registration data of the Ministry of the Interior as of January 2020)

* Incidence rate based on the number of confirmed cases with the address of the reporting institution



KDCA

Korea Disease Control and
Prevention Agency

Updates on COVID-19 in Republic of Korea

1 April 2021

Confirmed cases by gender and age group

		New cases (%)	Total cases (%)	Incidence rate* (per 100,000)
Total		551 (100)	103,639 (100)	199.89
Sex	Male	281 (51.00)	51,465 (49.66)	198.99
	Female	270 (49.00)	52,174 (50.34)	200.79
Age	80 or above	17 (3.09)	4,770 (4.60)	251.15
	70-79	27 (4.90)	7,663 (7.39)	212.44
	60-69	81 (14.70)	16,073 (15.51)	253.35
	50-59	97 (17.60)	19,113 (18.44)	220.53
	40-49	81 (14.70)	15,088 (14.56)	179.85
	30-39	71 (12.89)	13,910 (13.42)	197.44
	20-29	91 (16.52)	15,555 (15.01)	228.53
	10-19	48 (8.71)	7,058 (6.81)	142.86
0-9	38 (6.90)	4,409 (4.25)	106.28	

* Total (cumulative) number of cases reported since January 2020 by sex and age / Population by sex and age (based on resident registration data of the Ministry of the Interior as of January 2020)

※ Figures subject to correction based on findings from epidemiological investigations

Deaths by gender and age group

		New deaths (%)	Total deaths (%)	Case fatality rate (%)
Total		4 (100)	1,735 (100)	1.67
Sex	Male	2 (50.00)	864 (49.80)	1.68
	Female	2 (50.00)	871 (50.20)	1.67
Age	80 or above	1 (25.00)	966 (55.68)	20.25
	70-79	1 (25.00)	486 (28.01)	6.34
	60-69	2 (50.00)	201 (11.59)	1.25
	50-59	0 (0.00)	58 (3.34)	0.30
	40-49	0 (0.00)	14 (0.81)	0.09
	30-39	0 (0.00)	7 (0.40)	0.05
	20-29	0 (0.00)	3 (0.17)	0.02
	10-19	0 (0.00)	0 (0.00)	0.00
0-9	0 (0.00)	0 (0.00)	0.00	

* Case fatality rate (CFR) (%) = Number of deaths / Number of confirmed cases x 100

※ Figures subject to correction based on findings from epidemiological investigations



KDCA

Korea Disease Control and
Prevention Agency

Updates on COVID-19 in Republic of Korea

1 April 2021

AGE DISTRIBUTION OF SEVERE/CRITICAL CASES

	3.19.	3.20.	3.21.	3.22.	3.23.	3.24.	3.25.	3.26	3.27	3.28	3.29	3.30	3.31	4.1.
Total	101	102	104	103	101	111	111	111	103	104	100	102	108	107

	Severe/Critical	(%)
Total	107	(100.0)
80 and above	24	(22.4)
70-79	36	(33.6)
60-69	39	(36.4)
50-59	6	(5.6)
40-49	2	(1.9)
30-39	0	(0.0)
20-29	0	(0.0)
10-19	0	(0.0)
0-9	0	(0.0)

* Severe/Critical: COVID-19 patients in isolation being treated with high flow oxygen therapy, mechanical ventilator, ECMO (Extracorporeal Membrane Oxygenation), CRRT (Continuous Renal Replacement Therapy)

* ICU treatment is decided based on the need for intensive care based on factors such as clinical condition and presence of any underlying medical condition and may differ from severe and critical case classification criteria. The number of severe/critical cases may not match the number of patients in ICU.

※ Figures subject to correction based on findings from epidemiological investigations



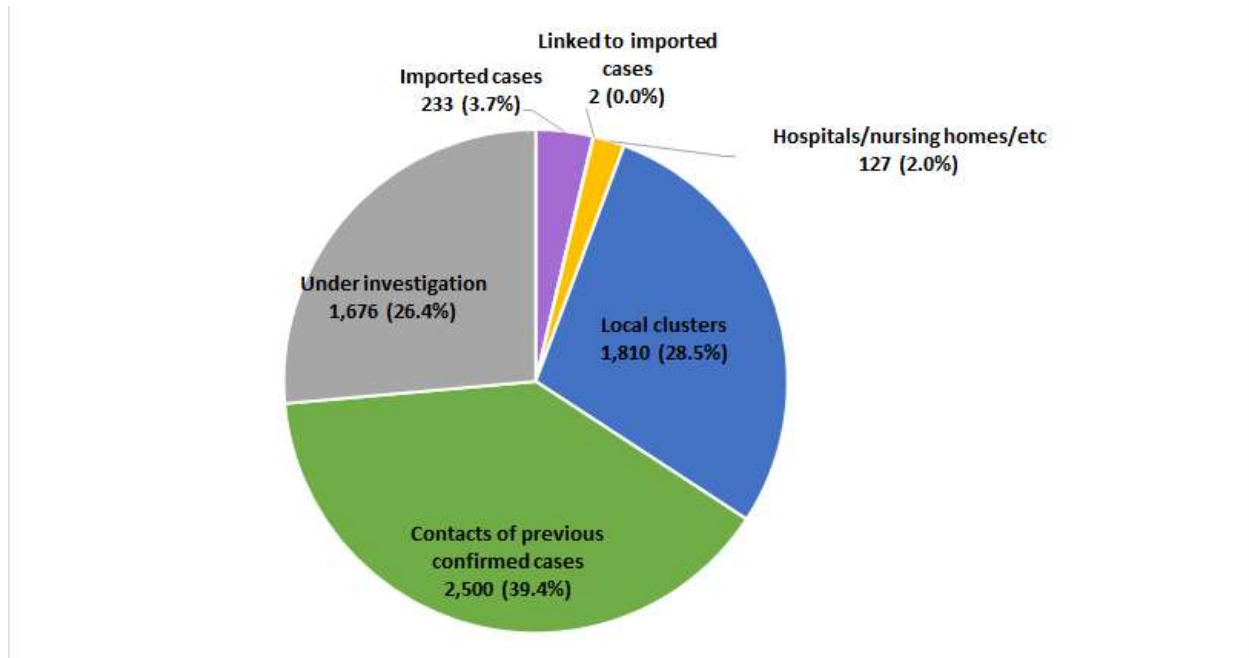
KDCA

Korea Disease Control and Prevention Agency

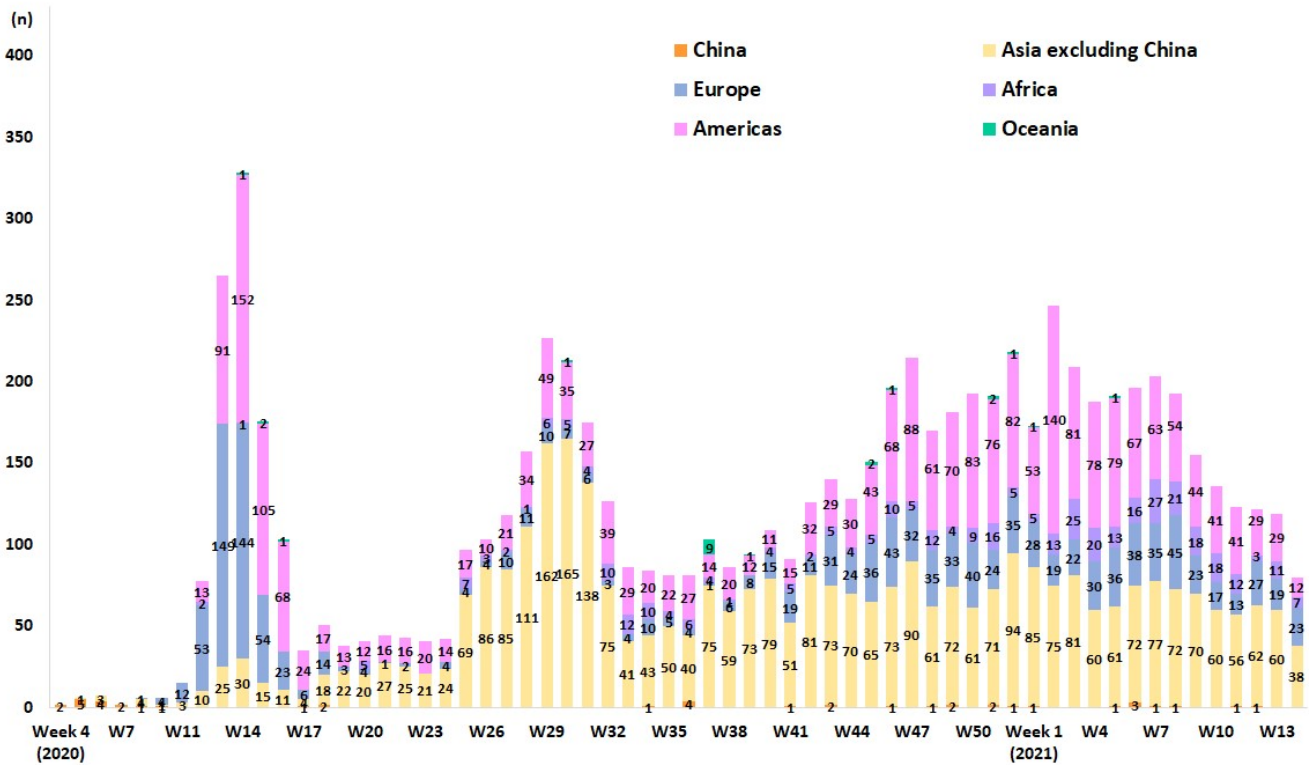
Updates on COVID-19 in Republic of Korea

1 April 2021

NEW CASES (LAST 2 WEEKS) BY CHAIN OF TRANSMISSION



IMPORTED CASES





KDCA

Korea Disease Control and Prevention Agency

Updates on COVID-19 in Republic of Korea

1 April 2021

REGIONAL DISTRIBUTION AND EPIDEMIOLOGICAL LINKS OF CONFIRMED CASES

Region	Confirmed cases									Other major clusters
	Total	Imported cases	Clusters				Other*	Under investigation	New cases	
			Sub-total	Shin-cheonji cluster	Other local clusters	Imported related				
Seoul	32,233	992	11,876	8	11,765	103	10,713	8,652	199	Past large clusters: • Sarang Jeil Church (1173) • Aug 15 Seoul rallies (650) • Nightclubs (277) • Richway (210) • Guro-gu call center (170) • Seoul Gangseo-gu dance lessons (329) • Seoul Gangseo-gu religious facility (258) • Seoul Jongno-gu restaurant / singing class (315) • Yongjin Woori Jeil Church (221) • Coupang fulfillment center (152) • Gwangju door-to-door sales (150) • Seoul Noryangjin teacher appointment exam preparation classes (112) • Newly planted churches group (119) • Gangseo-gu religious facility (258) • Chungbuk hospitals (472) • Gyeongbuk Sangju-si BTJ (808) • Busan/Ulsan janggu lessons (268) • Gyeongnam Jinju-si prayer house (120) • Yongsan-gu construction site (123)
Busan	3,860	146	2,343	12	2,273	58	813	558	54	
Daegu	8,934	167	6,612	4,512	2,092	8	1,151	1,004	7	
Incheon	5,078	248	2,226	2	2,214	10	1,739	865	20	
Gwangju	2,212	143	1,765	9	1,750	6	148	156	3	
Daejeon	1,296	57	662	2	659	1	368	209	10	
Ulsan	1,159	100	816	16	795	5	154	89	5	
Sejong	283	27	139	1	137	1	52	65	13	
Gyeonggi	28,712	1,633	11,284	29	11,176	79	9,697	6,098	130	
Gangwon	2,350	79	1,239	17	1,221	1	682	350	20	
Chungbuk	2,210	104	1,222	6	1,209	7	534	350	20	
Chungnam	2,646	175	1,361	0	1,360	1	678	432	15	
Jeonbuk	1,473	118	1,000	1	998	1	187	168	22	
Jeonnam	914	73	641	1	629	11	106	94	1	
Gyeongbuk	3,511	180	2,424	565	1,855	4	502	405	7	
Gyeongnam	2,981	163	1,888	33	1,822	33	520	410	21	
Jeju	627	37	388	0	387	1	110	92	2	
Points of Entry	3,160	3,160	0	0	0	0	0	0	2	
Total	103,639 (%)	7,602 (7.3)	47,886 (46.2)	5,214 (5.0)	42,342 (40.9)	330 (0.3)	28,154 (27.2)	19,997 (19.3)	551	

* Includes contacts of confirmed cases

※ The interim classification is based on the reporting location, which may change depending on further epidemiological investigation.