



KDCA

Korea Disease Control and Prevention Agency

Updates on COVID-19 in Republic of Korea

2 April 2021

Local transmission cases as of 0:00 today (cumulative since 3 January 2020)

	Total	City							
		Seoul	Busan	Daegu	Incheon	Gwangju	Daejeon	Ulsan	Sejong
New	533	165	35	17	22	1	19	7	8
Cumulative	96,566 ¹⁾	31,403 ¹⁾	3,749	8,784	4,852	2,070	1,258	1,066	264

	Total	Province							
		Gyeonggi	Gangwon	Chung-buk	Chung-nam	Jeon-buk	Jeon-nam	Gyeong-buk	Gyeong-nam
New	156	10	19	8	15	1	28	18	4
Cumulative	27,234 ²⁾	2,281	2,125	2,479	1,370	842	3,359	2,836	594

Imported cases, as of 0:00 today (cumulative since 3 January 2020)

	Total	Region/Country						Where confirmed		Nationality	
		China	Asia ex-China	Europe	America	Africa	Oceania	Point of Entry	Community	Korean	Other
New	25	0	13	5	5	2	0	11	14	9	16
Total	7,628 ¹⁾	42 (0.6%)	3,418 (44.7%)	1,324 (17.4%)	2,441 ¹⁾ (32.0%)	380 (5.0%)	23 (0.3%)	3,171 (41.6%)	4,457 ¹⁾ (58.4%)	4,084 (53.5%)	3,544 ¹⁾ (46.5%)

* Asia excluding China: Philippines 4, Indonesia 2, Pakistan 2, Russia 1, Bangladesh 4
 Europe: Poland 1, Ukraine 1, Italy 3
 America: US 4, Mexico 1
 Africa: Tunisia 1, Sudan 1

¹⁾ Reflecting correction of presumed transmission location (Local→Imported +1, Community +1, Foreign natinal +1, 2021.3.7. 0:00, America +1,

Case status, as of 0:00 today (cumulative since 3 January 2020)

	Discharged from isolation	Under isolation	Severe/critical cases	Deceased
As of 0:00 1 April 2021 (Thur)	95,439	6,462 ¹⁾	107	1,735
As of 0:00 2 April 2021 (Fri)	95,861	6,596	101	1,737
Difference	(+)422	(+)134	(-) ¹⁾ 6	(+)2

* Based on case data reported to the KDCA

** Severe/Critical: COVID-19 patients in isolation being treated with high flow oxygen therapy, mechanical ventilator, ECMO (Extracorporeal Membrane Oxygenation), CRRT (Continuous Renal Replacement Therapy)

※ Figures subject to correction based on findings from epidemiological investigations



KDCA

Korea Disease Control and
Prevention Agency

Updates on COVID-19 in Republic of Korea

2 April 2021

Recent major local clusters as of 12:00 today

Location	Cluster	New cases	Total cases
Seoul Jungnang-gu	Indoor gym facility	9	10
Seoul Mapo-gu	College dormitory	9	10
Seoul Yongsan-gu	Musicians club	22	23
Seoul Gangnam-gu	Night pub	13	14
Incheon Michuhol-gu	Preschool	10	11
Incheon Yeonsu-gu	Restaurant	14	15
Gyeonggi Goyang-si	Day work / family	2	16
Gyeonggi Namyangju-si	Family	10	11
Gyeonggi Osan-si	Preschool	4	25
Daejeon Seo-gu	Pub	5	35
Sejong-si	Elementary school	4	25
Jeonbuk Jeonju-si	Farm	5	27
Daegu Jung-gu	Place of business	3	37
Gyeongbuk Gyeongsan-si	Elderly welfare facility	23	24
Gyeongbuk Gyeongsan-si	Spa	3	35
Busan	Singing pub	20	156
Busan Yeonje-gu	Elderly welfare center	1	52
Busan Yeondo-gu	Church	2	13
Ulsan Buk-gu	Company / bath house	11	12
Gangwon Gangneung-si	Fitness center	8	9

* The specific figures may differ from the daily reported statistics or figures disclosed by local municipalities due to factors such as report timing and differences in the time period considered

Weekly risk assessment indicators

		2.21.~2.27.	2.28.~3.6.	3.7.~3.13.	3.14.~3.20.
Daily average confirmed cases (n)	Local	369.4	371.7	428.3	415.9
	Imported	22.1	19.4	17.6	17.4
	Total	391.6	391.1	445.9	433.3
Cases with chain of transmission under investigation (%) ⁽ⁿ⁾		21.5(588/2,741)	22.3(610/2,738)	22.2(694/3,121)	28.5(864/3,033)
Percentage under management ¹⁾		46.6	46.9	40.0	37.4
Reproduction number (Rt)		0.99	0.94	1.07	1.03
New clusters		60 (▲5 ²⁾)	50 (▲6 ²⁾)	47(▲22 ²⁾)	17 ³⁾
Average critical/severe patients (n)		146	134	125	101
Number of deaths (n)		42	37	35	26
Number of ICU available		565	582	604	611

¹⁾ Of the new cases, percent confirmed while under quarantine

²⁾ Reclassified as belonging to a cluster due to epidemiological link found

³⁾ Figure not final due to ongoing investigation

※ All figures subject to change upon new findings from investigation



KDCA

Korea Disease Control and
Prevention Agency

Updates on COVID-19 in Republic of Korea

2 April 2021

COVID-19 vaccination status as of 0:00 today (cumulative since 26 February 2021)

	New	Total
1 st dose	36,125	914,069
2 nd dose	6,881	19,855

※ Figures based on recorded data and subject to correction

Adverse events following COVID-19 vaccination reported as of 0:00 today (cumulative since 26 February 2021)

		Vaccinated (cumulative)	Total	%	General ¹⁾	Anaphylaxis suspected ²⁾	Severe suspected ³⁾	Deaths
Total	New	933,924	124	1.16%	119	1	2	2
	Total		10,821		10,668	107	16	30
AstraZeneca	New	834,226	69	1.25%	65	0	2	2
	Total		10,406		10,267	93	16	30
Pfizer	New	99,698	55	0.42%	54	1	0	0
	Total		415		401	14	0	0

¹⁾ Mild cases such as headache, fever, nausea, vomiting, etc.²⁾ Anaphylactoid reaction and anaphylactic shock suspected cases reported by healthcare institution; Anaphylactoid reaction refers to occurrence of symptoms such as shortness of breath, rashes, etc. within 2 hours of vaccination and differs from anaphylaxis³⁾ Includes convulsion and other nervous system response and ICU admitted cases

※ Cases reported as suspected cases of AEFI; causal association not yet determined; investigation for assessment of causal association to take place for deaths or anaphylaxis cases



KDCA

Korea Disease Control and Prevention Agency

Updates on COVID-19 in Republic of Korea

2 April 2021

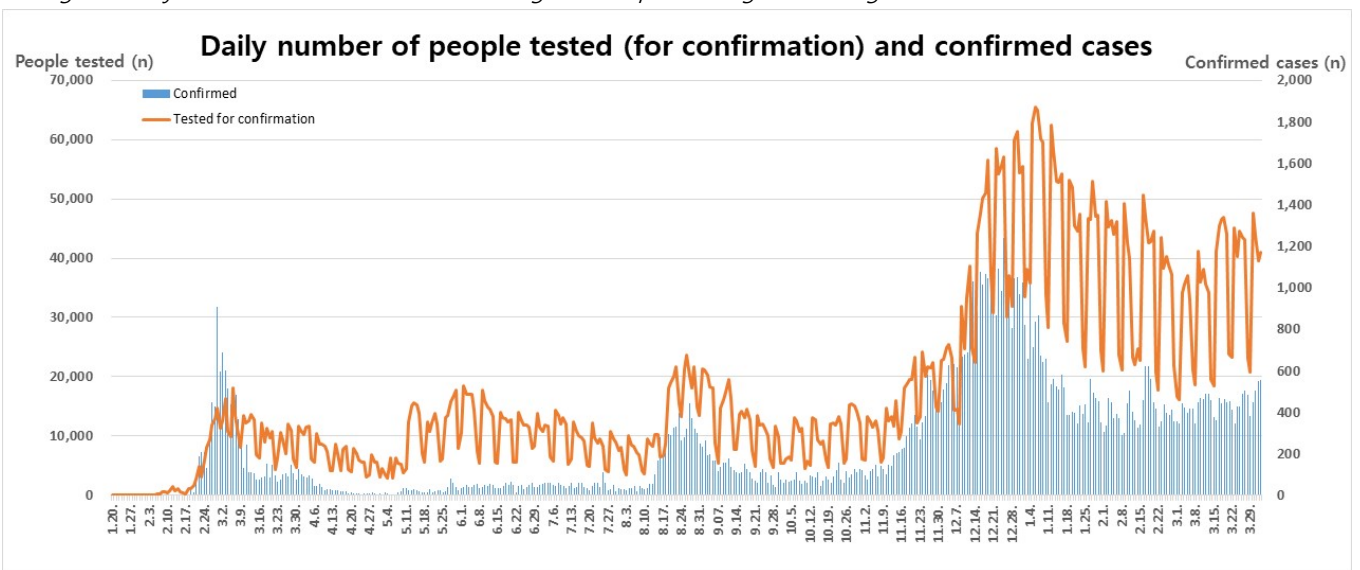
Overall case and test status as of 0:00 today (cumulative since 3 January 2020)

Period (since 3 Jan)	Total	Tested positive (PCR)				Testing in progress	Tested negative (PCR)
		Confirmed	Discharged from isolation	Under isolation	Deceased		
As of 0:00 1 April 2021 (Thur)	7,747,303	103,636 ¹	95,439	6,462 ¹	1,735	68,659	7,575,008 ¹
As of 0:00 2 April 2021 (Fri)	7,788,295	104,194	95,861	6,596	1,737	70,752	7,613,349
Difference	+40,992	+558	+422	+134	+2	+2,093	+38,341

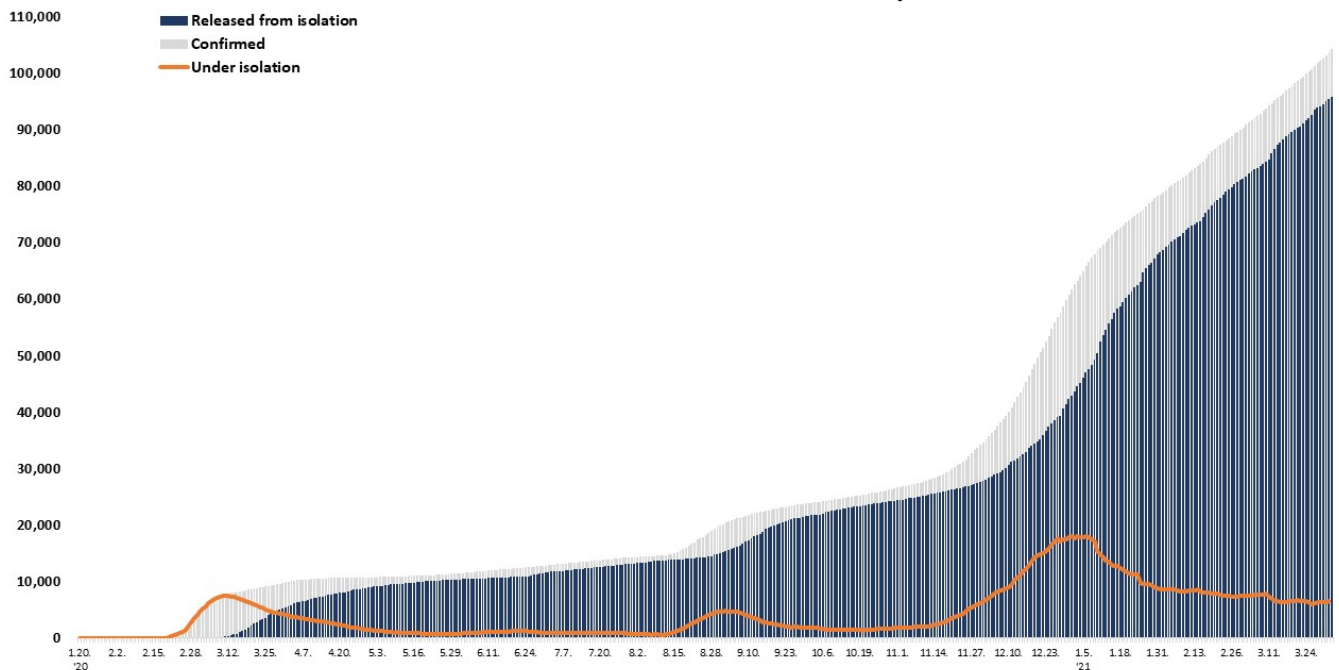
* Based on case data reported to the KDCA

** Testing in progress includes number of completed tests with negative results that are being recorded with delays

※ Figures subject to correction based on findings from epidemiological investigations



Total confirmed cases of COVID-19 in the Republic of Korea





KDCA

Korea Disease Control and
Prevention Agency

Updates on COVID-19 in Republic of Korea

2 April 2021

Regional distribution of cases as of 0:00 today (cumulative since 3 January 2020)

Region	New cases		Total cases	(%)	Incidence rate* (per 100,000)
	Local	Imported			
Seoul	165	2	32,397 ¹⁾	(31.09)	332.84
Busan	35	3	3,898	(3.74)	114.25
Daegu	17	0	8,951	(8.59)	367.37
Incheon	22	1	5,101	(4.90)	172.56
Gwangju	1	0	2,213	(2.12)	151.92
Daejeon	19	0	1,315	(1.26)	89.20
Ulsan	7	0	1,166	(1.12)	101.65
Sejong	8	0	291	(0.28)	85.01
Gyeonggi	156	4	28,872	(27.71)	217.90
Gangwon	10	0	2,360	(2.27)	153.19
Chungbuk	19	0	2,229	(2.14)	139.37
Chungnam	8	2	2,656	(2.55)	125.14
Jeonbuk	15	0	1,488	(1.43)	81.88
Jeonnam	1	0	915	(0.88)	49.07
Gyeongbuk	28	2	3,541	(3.40)	132.99
Gyeongnam	18	0	2,999	(2.88)	89.22
Jeju	4	0	631	(0.61)	94.07
Border Screening	0	11	3,171	(3.04)	-
Total	533	25	104,194¹⁾	(100)	200.96

* Total (cumulative) number of cases reported since January 2020 of region / Population of region (based on resident registration data of the Ministry of the Interior as of January 2020)

* Incidence rate based on the number of confirmed cases with the address of the reporting institution



KDCA

Korea Disease Control and
Prevention Agency

Updates on COVID-19 in Republic of Korea

2 April 2021

Confirmed cases by gender and age group

		New cases (%)	Total cases (%)	Incidence rate* (per 100,000)
Total		558 (100)	104,194 (100)	200.96
Sex	Male	295 (52.87)	51,759 (49.68)	200.13
	Female	263 (47.13)	52,435 (50.32)	201.79
Age	80 or above	22 (3.94)	4,792 (4.60)	252.31
	70-79	47 (8.42)	7,710 (7.40)	213.74
	60-69	69 (12.37)	16,141 (15.49)	254.42
	50-59	94 (16.85)	19,206 (18.43)	221.60
	40-49	85 (15.23)	15,173 (14.56)	180.86
	30-39	91 (16.31)	14,000 (13.44)	198.72
	20-29	91 (16.31)	15,646 (15.02)	229.87
	0-9	36 (6.45)	7,094 (6.81)	143.59
	0-9	23 (4.12)	4,432 (4.25)	106.83

* Total (cumulative) number of cases reported since January 2020 by sex and age / Population by sex and age (based on resident registration data of the Ministry of the Interior as of January 2020)

※ Figures subject to correction based on findings from epidemiological investigations

1) Corrected local reporting error (Feb 25, 0:00, Daegu local transmission -1)

Deaths by gender and age group

		New deaths (%)	Total deaths (%)	Case fatality rate (%)
Total		2 (100)	1,737 (100)	1.67
Sex	Male	1 (50.00)	865 (49.80)	1.67
	Female	1 (50.00)	872 (50.20)	1.66
Age	80 or above	2 (100.00)	968 (55.73)	20.20
	70-79	0 (0.00)	486 (27.98)	6.30
	60-69	0 (0.00)	201 (11.57)	1.25
	50-59	0 (0.00)	58 (3.34)	0.30
	40-49	0 (0.00)	14 (0.81)	0.09
	30-39	0 (0.00)	7 (0.40)	0.05
	20-29	0 (0.00)	3 (0.17)	0.02
	10-19	0 (0.00)	0 (0.00)	0.00
	0-9	0 (0.00)	0 (0.00)	0.00

* Case fatality rate (CFR) (%) = Number of deaths / Number of confirmed cases x 100

※ Figures subject to correction based on findings from epidemiological investigations



KDCA

Korea Disease Control and
Prevention Agency

Updates on COVID-19 in Republic of Korea

2 April 2021

AGE DISTRIBUTION OF SEVERE/CRITICAL CASES

	3.20.	3.21.	3.22.	3.23.	3.24.	3.25.	3.26	3.27	3.28	3.29	3.30	3.31	4.1.	4.2.
Total	102	104	103	101	111	111	111	103	104	100	102	108	107	101

	Severe/Critical	(%)
Total	101	(100.0)
80 and above	23	(22.8)
70-79	33	(32.7)
60-69	37	(36.6)
50-59	6	(5.9)
40-49	2	(2.0)
30-39	0	(0.0)
20-29	0	(0.0)
10-19	0	(0.0)
0-9	0	(0.0)

* Severe/Critical: COVID-19 patients in isolation being treated with high flow oxygen therapy, mechanical ventilator, ECMO (Extracorporeal Membrane Oxygenation), CRRT (Continuous Renal Replacement Therapy)

* ICU treatment is decided based on the need for intensive care based on factors such as clinical condition and presence of any underlying medical condition and may differ from severe and critical case classification criteria. The number of severe/critical cases may not match the number of patients in ICU.

※ Figures subject to correction based on findings from epidemiological investigations



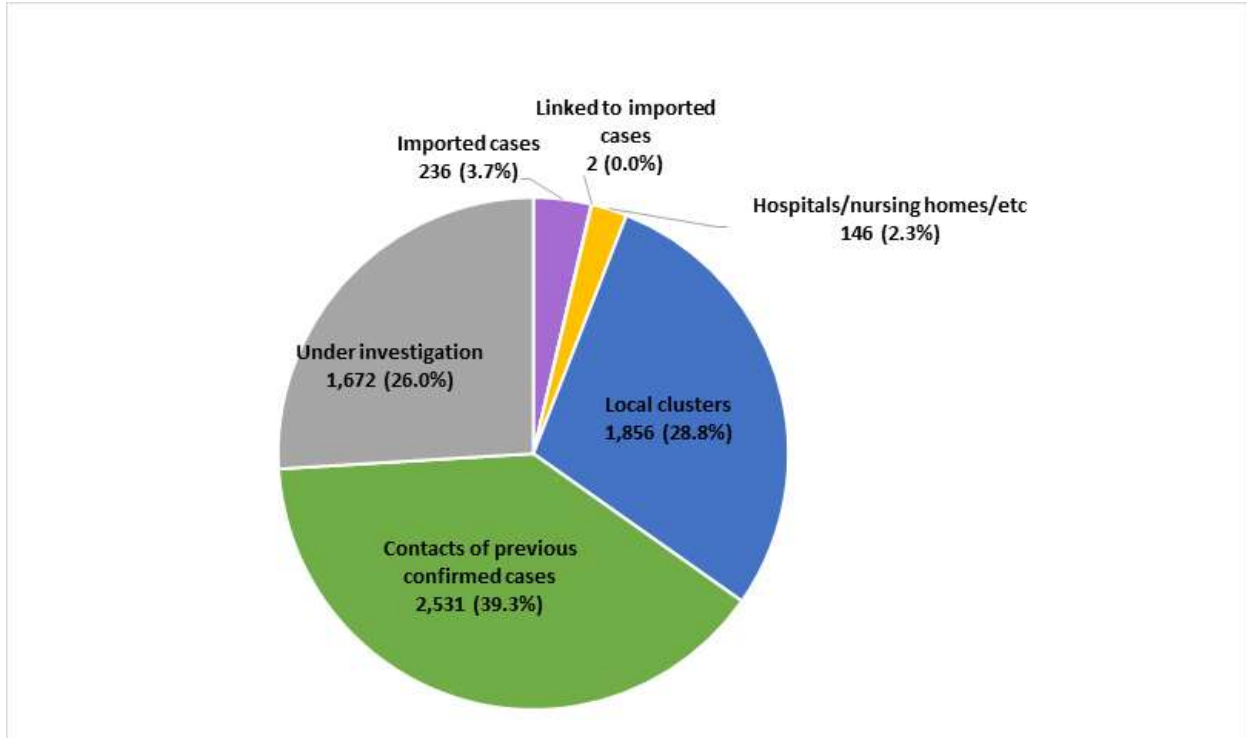
KDCA

Korea Disease Control and Prevention Agency

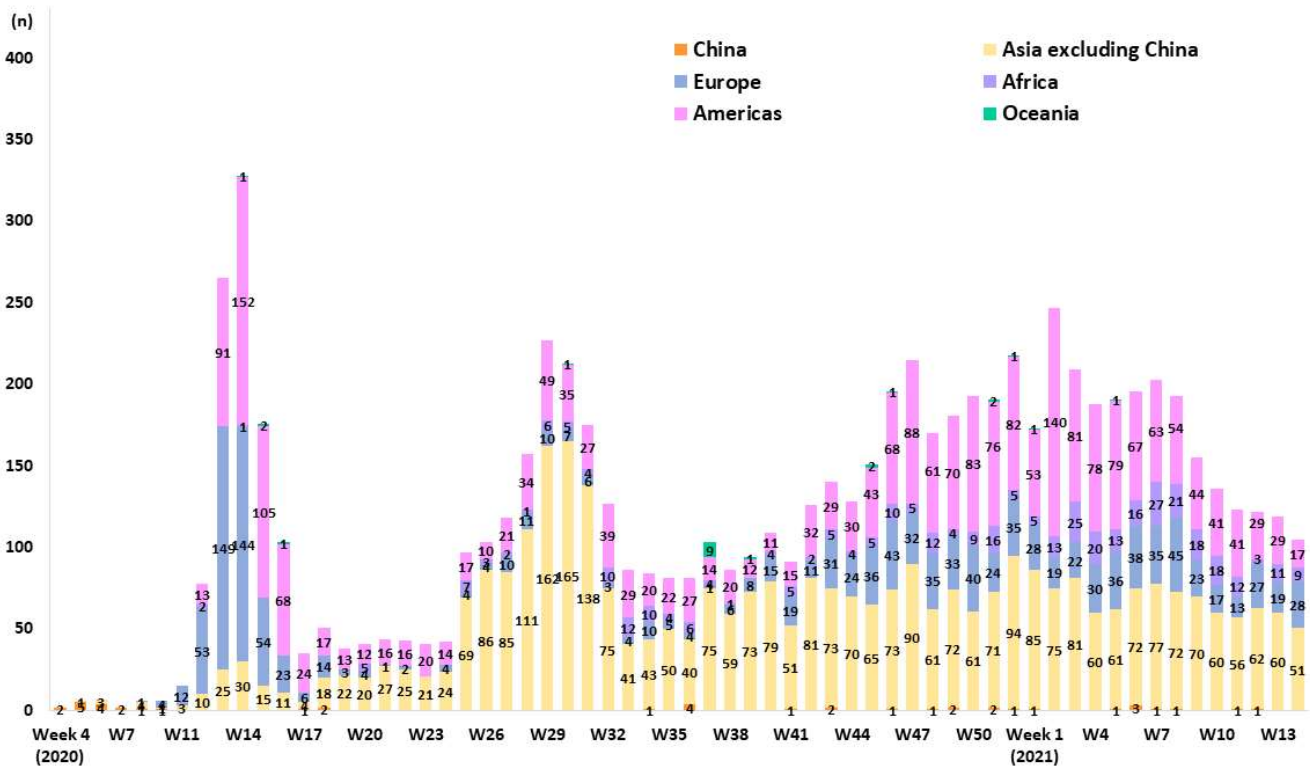
Updates on COVID-19 in Republic of Korea

2 April 2021

NEW CASES (LAST 2 WEEKS) BY CHAIN OF TRANSMISSION



IMPORTED CASES





KDCA

Korea Disease Control and Prevention Agency

Updates on COVID-19 in Republic of Korea

2 April 2021

REGIONAL DISTRIBUTION AND EPIDEMIOLOGICAL LINKS OF CONFIRMED CASES

Region	Confirmed cases									Other major clusters
	Total	Imported cases	Clusters				Other*	Under investigation	New cases	
			Sub-total	Shin-cheonji cluster	Other local clusters	Imported related				
Seoul	32,397	994	11,962	8	11,851	103	10,745	8,696	167	Past large clusters: • Sarang Jeil Church (1173) • Aug 15 Seoul rallies (650) • Seoul Gangseo-gu dance lessons (329) • Seoul Jongno-gu restaurant / singing class (315) • Nightclubs (277) • Yongjin Woori Jeil Church (221) • Richway (210) • Guro-gu call center (170) • Coupang fulfillment center (152) • Gwangju door-to-door sales (150) • Seoul Noryangjin teacher appointment exam preparation classes (112) • Newly planted churches group (119) • Gangseo-gu religious facility (258) • Chungbuk hospitals (472) • Gyeongbuk Sangju-si BTJ (808) • Busan/Ulsan janggu lessons (268) • Gyeongnam Jinju-si prayer house (120) • Yongsan-gu construction site (123)
Busan	3,898	149	2,363	12	2,293	58	824	562	38	
Daegu	8,951	167	6,620	4,512	2,100	8	1,156	1,008	17	
Incheon	5,101	249	2,232	2	2,220	10	1,752	868	23	
Gwangju	2,213	143	1,765	9	1,750	6	149	156	1	
Daejeon	1,315	57	666	2	663	1	375	217	19	
Ulsan	1,166	100	820	16	799	5	156	90	7	
Sejong	291	27	139	1	137	1	53	72	8	
Gyeonggi	28,872	1,638	11,377	29	11,269	79	9,757	6,100	160	
Gangwon	2,360	79	1,244	17	1,226	1	685	352	10	
Chungbuk	2,229	104	1,229	6	1,216	7	541	355	19	
Chungnam	2,656	177	1,361	0	1,360	1	680	438	10	
Jeonbuk	1,488	118	1,001	1	999	1	194	175	15	
Jeonnam	915	73	641	1	629	11	107	94	1	
Gyeongbuk	3,541	182	2,446	565	1,877	4	505	408	30	
Gyeongnam	2,999	163	1,898	33	1,832	33	526	412	18	
Jeju	631	37	389	0	388	1	111	94	4	
Points of Entry	3,171	3,171	0	0	0	0	0	0	11	
Total	104,194 (%)	7,628 (7.3)	48,153 (46.2)	5,214 (5.0)	42,609 (40.9)	330 (0.3)	28,316 (27.2)	20,097 (19.3)	558	

* Includes contacts of confirmed cases

※ The interim classification is based on the reporting location, which may change depending on further epidemiological investigation.