



KCDC

Korea Centers for Disease Control & Prevention

Updates on COVID-19 in Republic of Korea

6 June 2020

- As of 0:00, 6 June 2020, the total number of confirmed cases is 11,719 (including 1,288 imported cases), of which 10,531 cases have been discharged from isolation. Newly confirmed cases are 51 in total.

[Table 1. Total reported/tested cases]

Period (since 3 Jan)	Total	Tested positive (PCR)				Testing in progress	Tested negative (PCR)
		Confirmed	Discharged from isolation	Under isolation	Deceased		
As of 0:00 5 June (Fri)	990,960	11,668	10,506	889	273	28,766	950,526
As of 0:00 6 June (Sat)	1,005,305	11,719	10,531	915	273	27,954	965,632
Difference	(+)14,345	(+)51	(+)25	(+)26	0	(-)812	(+)15,106

[Table 2. Imported cases in Korea (as of 0:00, 6 June 2020)]

	Total	Region/Country						Where confirmed		Nationality	
		China	Asia ex-China	Europe	Americas	Africa	Australia	Point of Entry	Community	Korean	Other
New	8	0	3	0	5	0	0	5	3	8	0
Total	1,288	19 (1.5%)	237 (18.4%)	476 (37.0%)	547 (42.5%)	8 (0.6%)	1 (0.1%)	545 (42.3%)	743 (57.7%)	1,124 (87.3%)	164 (12.7%)

* Figures may change based on findings from ongoing local epidemiological investigation efforts.

- Of the 51 new cases, 8 were imported cases and 43 were locally transmitted cases.
 - Of the 8 imported cases, 5 are from America, 2 from UAE, 1 from Pakistan.
- Related to the nightclub cluster, an additional case has been confirmed. In total, 273* cases have been confirmed related to the nightclubs.
 - * Club visitors=96; Contacts =177 / Seoul City=135, Gyeonggi Province=59, Incheon City=54, Chungbuk Province=9, Busan City=4, Daegu City=2, Gyeongnam Province=2, Gangwon Province=2, Jeonbuk Province=2, Daejeon City=1, Chungnam Province=1, Gyeongbuk Province=1, Jeju Province=1
- Related to the Coupang logistics center cluster in Bucheon-si, Gyeonggi Province, 6 additional cases were confirmed. In total, 130* cases have been confirmed.
 - * 79 workers of the logistics center; 51 contacts / Gyeonggi=60, Incheon=49, Seoul=21
- Related to the newly planted churches in the Seoul Metropolitan Region, 4 new cases were confirmed. In total, 80* cases have been confirmed.
 - *Related to church = 31; Contacts = 49 / Incheon = 43; Seoul = 22; Gyeonggi = 15
- Related to Richway in Gwanak-gu, Seoul, 13 additional cases were confirmed. In total, 42 case have been confirmed. All persons who have visited Richway (Seoul Gwangak-gu Siheungdae-ro 552 Seocheon Building Floor 8) between 21 May ~ 3 June are advised to get tested regardless of symptoms.
 - *Seoul = 26; Gyeonggi = 8; Incheon = 6; Chungnam = 2



KCDC

Korea Centers for Disease
Control & Prevention

Updates on COVID-19 in Republic of Korea

6 June 2020

- Related to the table tennis club in Seoul, 17 new cases were confirmed, and 13 new cases were confirmed related to Big Tree church at Yongin city. Investigation on the chain of transmission and contact tracing are underway.
*Seoul = 15; Gyeonggi = 1; Incheon = 1
- Related to Samsung Fire & Marine Insurance branch office, Gangnam-gu, Seoul, an additional case was confirmed. In total, 4 cases were confirmed.
- From Happy Nursing Home, Gwangju City, Gyeonggi province, an additional case was confirmed. In total, 8 cases have been confirmed.
*Caretaker = 2; care home residents = 5; social worker = 1
- Related to Elim church, Gumi city, Gyongbuk province, an additional case was confirmed during the testing for discharge of contacts. In total, 10 cases were confirmed.
* Elim church member = 7(including Daegu Agriculture Meister Highschool student and family); family = 2; a merchant = 1
- KCDC asked the public to take precautions about risk factors related to small and medium-sized churches and door-to-door sales due to increasing number of confirmed cases.
- As a result of an investigation into the church where many confirmed cases occurred,
 - It was a sealed environment, such as underground or poorly ventilated place,
 - There were activities such as singing hymns, sharing meals or refreshments that could spread droplets,
 - Preventive measures such as wearing masks and hand hygiene have not been followed well.
- In the case of religious facilities, KCDC asked to cancel or postpone the small groups that may spread droplets through actions such as having a conversation in a enclosed space, singing hymns, or eating together, or to switch to non-face-to-face methods.
 - In the event of on-site worship, participants should be reduced in a suitable size to maintain distance between participants, be checked for fever and suspected symptoms, wash their hands, and wear masks. Meals are not to be provided and any action which causes droplets to splash such as singing and shouting are asked to be suspended.
- As a result of the investigation into the door-to-door sales event, it was found that a large number of visitors gathered in a sealed environment with poor ventilation, sang songs and ate together.
 - Infection transmission is much easier within these enclosed spaces where many people are concentrated and perform activities such as singing and eating. Therefore so the relevant activities should be restrained.



KCDC

Korea Centers for Disease Control & Prevention

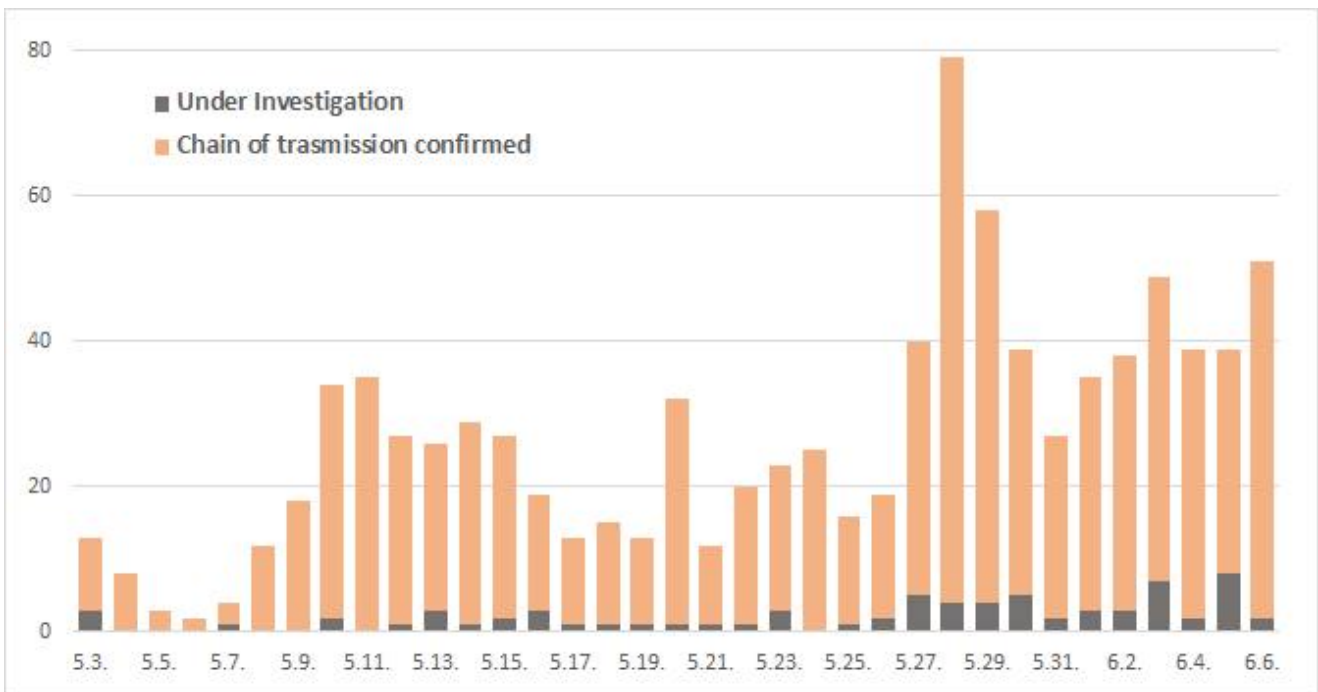
Updates on COVID-19 in Republic of Korea

6 June 2020

□ KCDC stated that currently there is an ongoing transmission between sporadic patients whose infection routes have not yet been identified. In particular, the number of severe patients is increasing* as the proportion of those aged 65 or older among the confirmed cases increase.

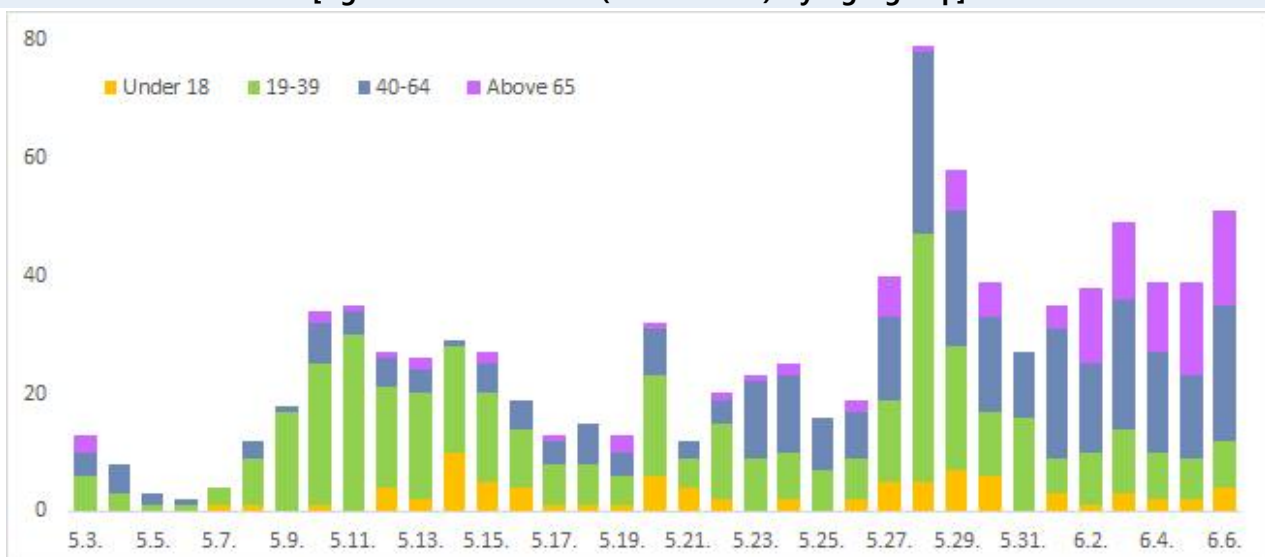
* Since May, there is 1 death case (biblical language study meeting cluster), 2 very severe cases (biblical language study meeting cluster), 6 severe cases (Coupang = 3, Happy nursing home = 3, church plant meeting = 1, under investigation = 1)

[Figure 1: New cases (for 1 month) which are under investigation and concluded]



* Of 939 confirmed cases since 3 May, 73(7.8%) are under investigation

[Figure 2 : New cases (for 1 month) by age group]



* Under 18 = 85(9.1%), 19~39 = 409(43.6%), 40~64 = 328(34.9%), Above 65 = 117(12.5%)



KCDC

Korea Centers for Disease
Control & Prevention

Updates on COVID-19 in Republic of Korea

6 June 2020

<Table 3: Distribution of severe cases by dates>

Dates	5.24	5.25	5.26	5.27	5.28	5.29	5.30	5.31	6.1	6.2	6.3	6.4	6.5	6.6
Total	13	13	12	12	11	10	10	11	12	11	8	9	11	14
Severe	5	5	4	5	4	3	4	3	3	2	1	2	4	7
Very severe	8	8	8	7	7	7	6	8	9	9	7	7	7	7

- Therefore, senior citizens aged 65 or older are asked to strictly follow the distancing in daily life guidelines, such as hand washing and wearing masks, while refraining from going to meetings in unventilated spaces such as social clubs and religious small group gatherings, and asked not to visit places where many people gather.



KCDC

Korea Centers for Disease Control & Prevention

Updates on COVID-19 in Republic of Korea

6 June 2020

[Table 4: Regional distribution and epidemiological links of the confirmed cases]

Region	Confirmed cases									Other major clusters
	Total	Imported cases	Clusters					Other*	New cases	
			Sub-total	Shin-cheonji	Other clusters	Contacts of confirmed cases	Imported cases			
Seoul	947	282	615	8	519	19	69	50	23	Nightclubs (135) , Guro-gu call center (99), Manmin Central Church (41), Dong-an Church-PC Cafe (28), Richway (22) , Incheon newly planted churches group (22) , Coupang (21), KB Life Insurance PM Service Center (11), biblical language study meeting (6), Big tree church(6) , KCCC (5) , real-estate agency in Gyeong-gu(3), etc.
Busan	147	29	88	12	57	18	1	30	0	Onchun Church (39), Suyeong-gu Kindergarten (5), Itaewon clubs (4), etc.
Daegu	6,886	28	6,118	4,511	686	917	4	740	0	Second Mi-Ju Hospital (196), Hansarang Convalescent Hospital (124), Daesil Convalescent Hospital (101), Fatima Hospital (39), Nightclubs (3), etc.
Incheon	273	49	214	2	199	6	7	10	11	Nightclubs (54), Coupang (46), Incheon newly planted churches group (42) , Guro-gu call center (19), real estate agency (9), Richway(5) , Jesus Malsseum Silcheon Church (5) , etc.
Gwangju	32	16	16	9	0	1	6	0	0	
Daejeon	46	15	22	2	12	8	0	9	0	Korea Forest Engineer Institute (3), etc.
Ulsan	52	21	24	16	2	3	3	7	0	
Sejong	47	4	42	1	38	3	0	1	0	Ministry of Oceans and Fisheries (31), gym facilities (8)
Gyeonggi	915	197	663	29	517	54	63	55	8	Grace River Church in Seongnam (67), Nightclubs (59), Coupang (58) , Uijeongbu St. Mary's Hospital (50), Guro-gu call center-Bucheon SaengMyeongSu Church (50), Anyang-Gunpo pastors group (16) , Incheon newly planted churches group (15) , Happy Care Home (8) , biblical language study meeting (9) , KCCC (6) , Richway (5) , Big tree church(2) , real estate agency (3), etc.
Gangwon	58	16	35	17	18	0	0	7	1	Uijeongbu St. Mary's Hospital (9), Apartments in Wonju City (3), Nightclubs (2), etc.
Chungbuk	60	8	42	6	27	7	2	10	0	Goesan-gun Jangyeon-myeon (11), Itaewon clubs (9), Guro-gu call center (2), etc.
Chungnam	148	13	125	0	123	1	1	10	1	Gym facilities in Cheonan (103), research center in Seosan (8), Richway (2) , etc.
Jeonbuk	21	10	6	1	5	0	0	5	0	Nightclubs (2)
Jeonnam	20	12	5	1	1	2	1	3	0	
Gyeongbuk	1,383	16	1,234	566	478	190	0	133	1	Cheongdo Daenam Hospital (119), Bonghwa Pureun Nursing Home (68), Gyeongsan Seo Convalescent Hospital (66), pilgrimage to Israel (41), Yecheon-gun (40), Gumi Elim Church (10), etc.
Gyeongnam	124	18	87	32	48	6	1	19	1	Geochang Church (10), Wings Tower (9), Geochang Woongyang-myeon (8), Nightclubs (2), etc.
Jeju	15	9	2	0	1	0	1	4	0	
Airport	545	545	0	0	0	0	0	0	5	
Total	11,719 (%)	1,288 (60.0)	9,338 (13.3)	5,213 (6.7)	2,731 (0.0)	1,235 (6.7)	159 (26.7)	1,093 (0.0)	51	

* Not classified into a cluster or under investigation

※ The interim classification is based on the reporting location, which may change depending on further epidemiological investigation.



KCDC

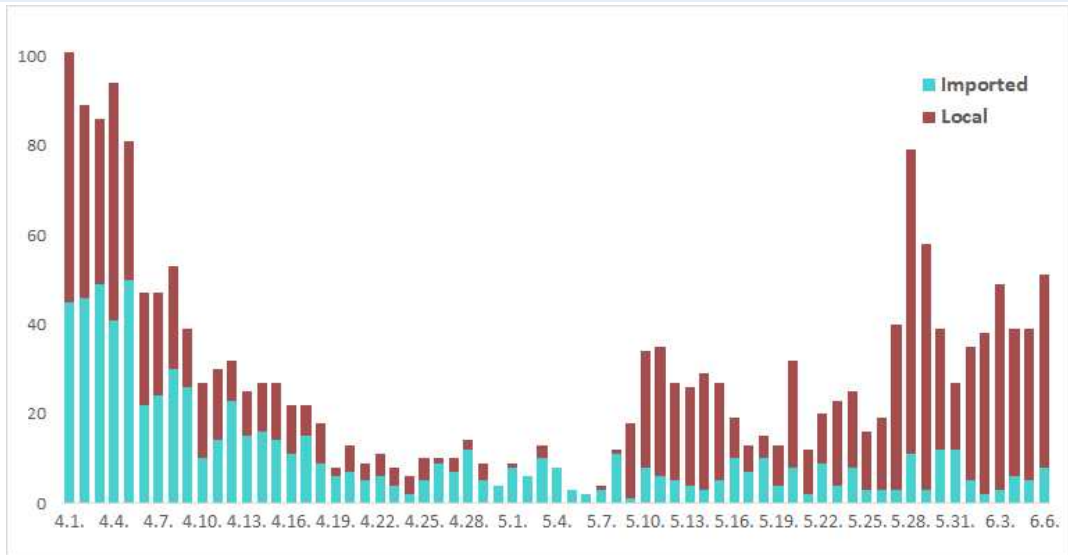
Korea Centers for Disease Control & Prevention

Updates on COVID-19 in Republic of Korea

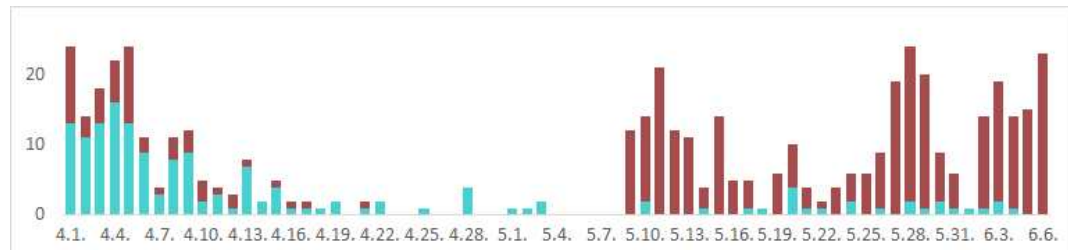
6 June 2020

[Figure 3: Daily new confirmed cases by chain of transmission]

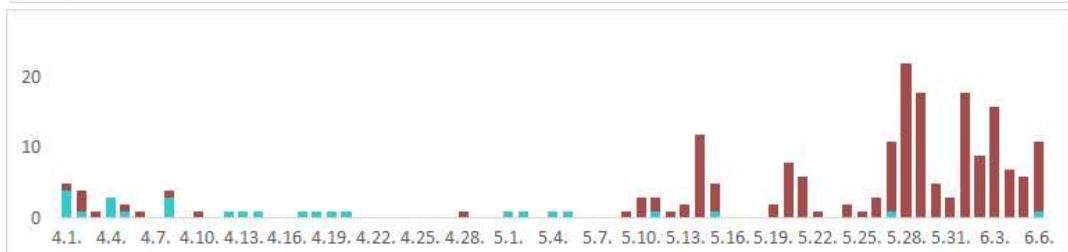
TOTAL



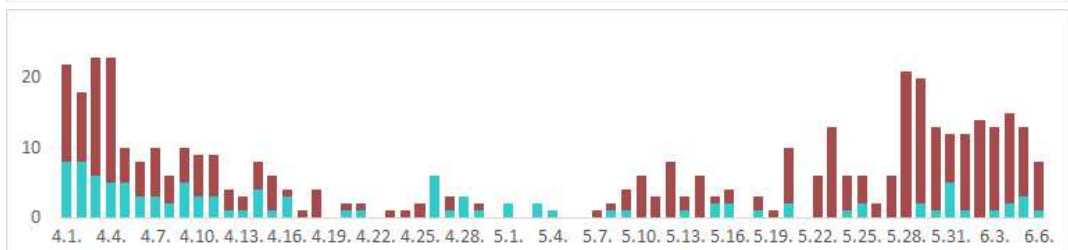
Seoul City



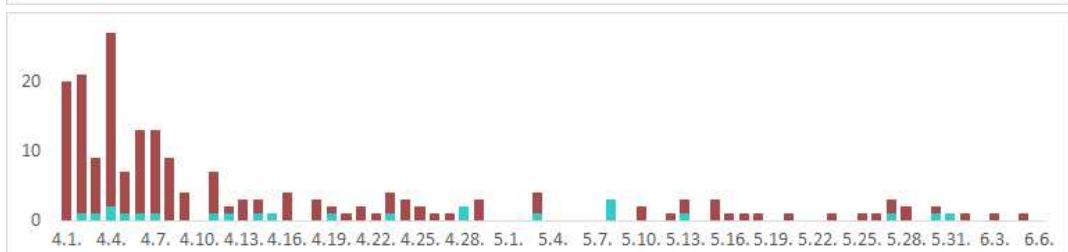
Incheon City



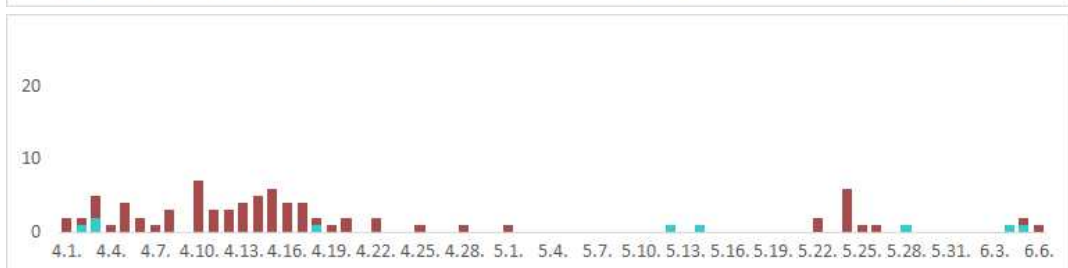
Gyeonggi Province



Daegu City



Gyeongbuk Province





KCDC

Korea Centers for Disease Control & Prevention

Updates on COVID-19 in Republic of Korea

6 June 2020

[Table 5: Age distribution of severe cases]

Age group	Total	Severe (%)	Very severe (%)
Total	14	7 (100.0)	7 (100.0)
80 and above	6	3 (42.9)	3 (42.9)
70-79	1	0 (0.0)	1 (14.3)
60-69	1	1 (14.3)	0 (0.0)
50-59	4	3 (42.9)	1 (14.3)
40-49	2	0 (0.0)	2 (28.6)
30-39	0	0 (0.0)	0 (0.0)
20-29	0	0 (0.0)	0 (0.0)
10-19	0	0 (0.0)	0 (0.0)
0-9	0	0 (0.0)	0 (0.0)

[Figure 4: New cases (for last 2 weeks) by chain of transmission]

