



KCDC

Korea Centers for Disease Control & Prevention

# The Updates of COVID-19 in Republic of Korea

13 June 2020

- As of 0:00, 13 June 2020, the total number of confirmed cases is 12,051 (including 1,330 imported cases), of which 10,691 cases have been discharged from isolation. Newly confirmed cases are 49 in total.

[Table 1. Total reported/tested cases]

Period (since 3 Jan)	Total	Tested positive (PCR)				Testing in progress	Tested negative (PCR)
		Confirmed	Discharged from isolation	Under isolation	Deceased		
As of 0:00 12 June (Fri)	1,081,486	12,002	10,669	1,056	277	24,244	1,045,240
<b>As of 0:00 13 June (Sat)</b>	1,094,704	12,051	10,691	1,083	277	23,352	1,059,301
<b>Difference</b>	(+)13,218	(+)49	(+)22	(+)27	-	(-)892	(+)14,061

[Table 2. Imported cases in Korea (as of 0:00, 13 June 2020)]

	Total	Region/Country						Where confirmed		Nationality	
		China	Asia ex-China	Europe	Americas	Africa	Australia	Point of Entry	Community	Korean	Other
<b>New</b>	5	0	1	4	0	0	0	1	4	4	1
<b>Total</b>	1,330	19 (11.0%)	261 (1.4%)	480 (19.6%)	561 (36.1%)	8 (42.2%)	1 (0.6%)	569 (0.1%)	761 (42.8%)	1,143 (57.2%)	187 (85.9%)

\* Figures may change based on findings from ongoing local epidemiological investigation efforts.

- Of the 49 new cases, 5 were imported cases and 44 were locally transmitted cases.
  - Of the 5 imported cases, 4 are from Europe and 1 from Asia (United Arab Emirates).
- Related to the newly planted churches in the Seoul Metropolitan Region, 5 additional cases were confirmed. In total, 100\* cases have been confirmed.
  - \* Related to church = 34; Contacts = 66 / Incheon = 51; Seoul = 28; Gyeonggi = 21
- Related to Richway in Gwanak-gu, Seoul, 14 new cases were confirmed, bringing the current total to 153\* cases. Additional clusters are identified from churches and workplace.
  - \* Visitors = 40; Contacts = 113 / Seoul = 86; Gyeonggi = 43; Incheon = 20; Chungnam = 2; Gangwon = 2

<Additional transmission from Richway cluster>

구분	Location	Confirmed cases
Chinese Migrants Church Shelter	Guro-gu, Seoul	8
Myeongseong Housing	Gangnam-gu, Seoul	26
Principle Language School	Gangnam-gu, Seoul	13
SJ Investment Call Center	Gangseo-gu, Seoul	10
Jesus Vision Church	Geumcheon-gu, Seoul	9
NBS Partners	Seongnam City, Gyeonggi	13
Church of God	Seongnam City, Gyeonggi	5
Jesus Malsseum Silcheon Church	Namdong-gu, Incheon	9
Family or workplace		20
<b>누계</b>		<b>113</b>



KCDC

Korea Centers for Disease  
Control & Prevention

# The Updates of COVID-19 in Republic of Korea

13 June 2020

- Related to the sport facility in Yangcheon-gu, Seoul, one more case was confirmed while in self-isolation. In total, 62\* cases have been confirmed.
  - \* Related to the table tennis facility = 35; Related to Big Tree Church = 27
- Related to Seongshim Daycare Center in Dobong-gu, Seoul, 13 more cases (customers=11, staff=2) have been confirmed since the first case was confirmed on 11 June. Two of their family and relatives were also confirmed, which brings the current total to 16 cases.
- Considering the cluster transmission continuously occurring in the Seoul Metropolitan Region, KCDC urged people to take extra precautions over the weekend.
  - Recent clusters have occurred in underground areas or poorly ventilated environments when the activities causing the spread of respiratory droplet, such as singing, dining, or sporting, took place. Preventive measures like mask wearing and hand hygiene practice were also not followed well.
  - Religious facilities, in particular, are advised to cancel or postpone small group meetings that involve conversations, singing, or eating together. Non-face-to-face methods are recommended instead. If on-site worship service is held, however, such facilities should limit the number of participants to ensure proper distance between participants. They need to check participants for fever and other suspected symptoms, ensure hand washing and mask wearing, and make sure not to provide meals or engage in any activities that cause respiratory droplets to spread.
- With the rise in the number of elderly cases, the number of severe cases are also increasing. The elderly need to take extra precautions as well.
  - They should minimize outdoor activities and avoid visiting enclosed places with no windows or poorly ventilated places. If inevitable, they are advised to wear masks, frequently wash/sanitize hands, and refrain from activities such as eating and singing.
  - Those who have chronic medical conditions should take good care of their health through getting a consultation and taking necessary medicine. As regular exercise is also important, light home exercises and taking a walk regularly in less crowded places and times are recommended.
- Since COVID-19 outbreak can occur from any venue under crowded, confined, and close-contact environment, everyone is advised not to have a club meeting nor to visit karaoke, PC cafe, and night life venues. Keeping two-meter distance, washing hands, and wearing a mask should be practiced in daily life.



KCDC

Korea Centers for Disease Control & Prevention

# The Updates of COVID-19 in Republic of Korea

13 June 2020

[Table 4: Regional distribution and epidemiological links of the confirmed cases]

Region	Confirmed cases									Other major clusters
	Total	Imported cases	Clusters					Other*	New cases	
			Sub-total	Shin-cheonji	Other clusters	Contacts of confirmed cases	Imported cases			
Seoul	1,101	285	747	8	646	24	69	69	29	Nightclubs (139), Guro-gu call center (99), <b>Richway (83)</b> , Manmin Central Church (41), <b>Yangcheon sport facility (36)</b> , <b>Newly planted churches (29)</b> , Dong-an Church-PC Cafe (28), Coupang (24), <b>Seongshim Daycare Center (15)</b> , KB Life Insurance PM Service Agency (13), biblical language study meeting (6), <b>KCCC (6)</b> , etc.
Busan	147	29	88	12	57	18	1	30	0	Onchun Church (39), Suyeong-gu Kindergarten (5), Itaewon clubs (4), etc.
Daegu	6,892	32	6,118	4,511	686	917	4	742	3	Second Mi-Ju Hospital (196), Hansarang Convalescent Hospital (124), Daesil Convalescent Hospital (101), Fatima Hospital (39), Nightclubs (2), etc.
Incheon	302	51	243	2	228	6	7	8	1	Coupang (56), Nightclubs (54), Newly planted churches (49), Guro-gu call center (19), <b>Richway (19)</b> , Gyeyang-gu real estate agency family (10), Jesus Malsseum Silcheon Church (5), Brothers in Yongin/Goyang (2), Yangcheon sport facility (1), etc.
Gwangju	32	16	16	9	0	1	6	0	0	
Daejeon	46	15	22	2	12	8	0	9	0	Korea Forest Engineer Institute (3), etc.
Ulsan	53	22	24	16	2	3	3	7	0	
Sejong	47	4	42	1	38	3	0	1	0	Ministry of Oceans and Fisheries (31), gym facilities (8)
Gyeonggi	1,025	203	760	29	612	56	63	62	14	Grace River Church in Seongnam (67), <b>Coupang (67)</b> , Nightclubs (59), Uijeongbu St. Mary's Hospital (50), Guro-gu call center-Bucheon SaengMyeongSu Church (50), <b>Richway (43)</b> , Yangcheon sport facility (24), <b>Anyang-Gunpo pastors group (23)</b> , <b>Newly planted churches (19)</b> , biblical language study meeting (9), Happy Care Home (10), <b>KCCC (6)</b> , etc.
Gangwon	59	16	36	17	19	0	0	7	0	Uijeongbu St. Mary's Hospital (10), Apartments in Wonju (4), Nightclubs (2), etc.
Chungbuk	61	9	42	6	27	7	2	10	0	Goesan-gun Jangyeon-myeon (11), Itaewon clubs (9), Guro-gu call center (2), etc.
Chungnam	151	14	125	0	123	1	1	12	1	Gym facilities in Cheonan (103), research center in Seosan (8), Richway (2), etc.
Jeonbuk	21	10	6	1	5	0	0	5	0	Nightclubs (2)
Jeonnam	20	12	5	1	1	2	1	3	0	
Gyeongbuk	1,383	16	1,234	566	478	190	0	133	0	Cheongdo Daenam Hospital (119), Bonghwa Pureun Nursing Home (68), Gyeongsan Seo Convalescent Hospital (66), pilgrimage to Israel (41), Yecheon-gun (40), Gumi Elim Church (10), etc.
Gyeongnam	127	18	89	32	50	6	1	20	0	Geochang Church (10), Wings Tower (9), Geochang Woongyang-myeon (8), Nightclubs (2), etc.
Jeju	15	9	2	0	1	0	1	4	0	
Airport	569	569	0	0	0	0	0	0	1	
Total	12,051 (%)	1,330 (60.0)	9,599 (13.3)	5,213 (0.0)	2,985 (6.7)	1242 (0.0)	159 (6.7)	1122 (26.7)	49	

\* Not classified into a cluster or under investigation

※ The interim classification is based on the reporting location, which may change depending on further epidemiological investigation.



KCDC

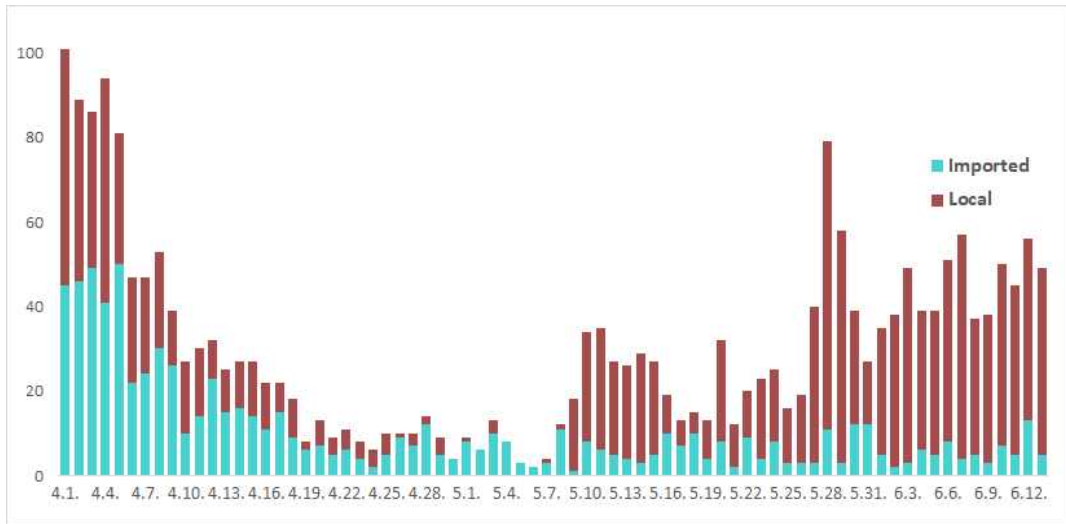
Korea Centers for Disease Control & Prevention

# The Updates of COVID-19 in Republic of Korea

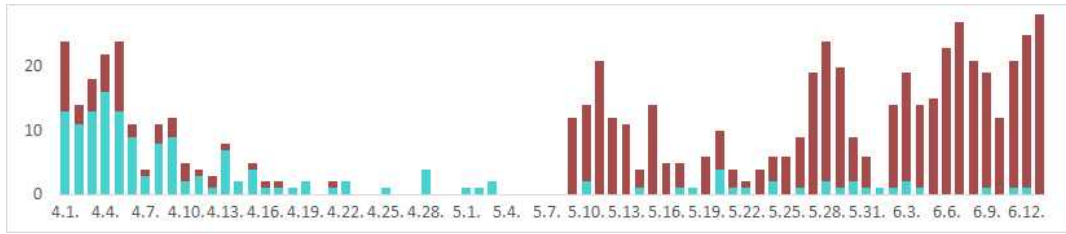
13 June 2020

[Figure 3: Daily new confirmed cases by chain of transmission]

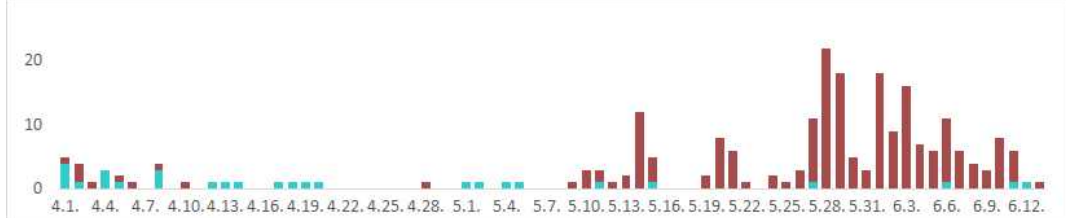
TOTAL



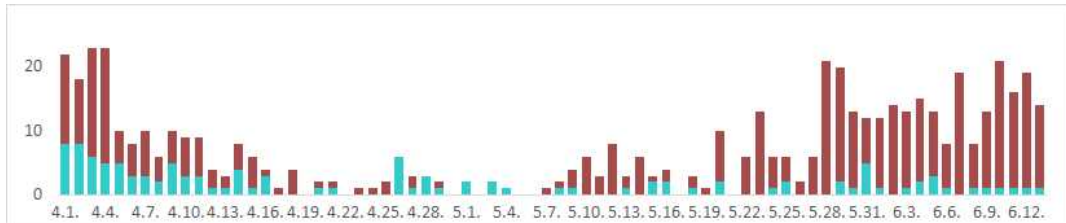
Seoul City



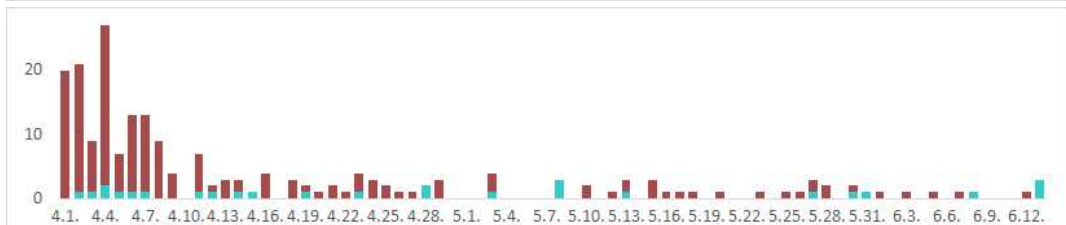
Incheon City



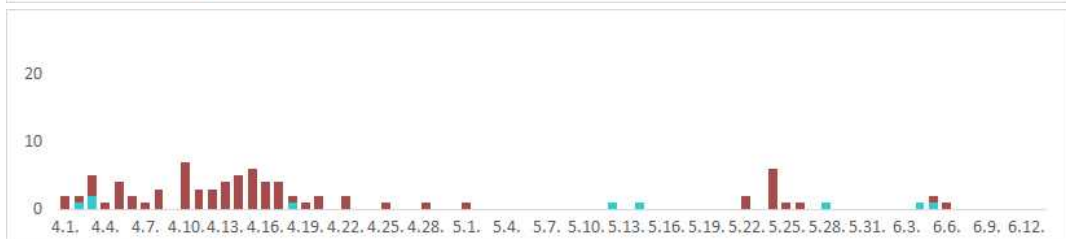
Gyeonggi Province



Daegu City



Gyeongbuk Province





[Table 5: Age distribution of severe cases]

	5.31	6.1	6.2	6.3	6.4	6.5	6.6	6.7	6.8	6.9	6.10	6.11	6.12	6.13
<b>Total</b>	11	12	11	8	9	11	14	14	14	18	20	20	18	22
<b>Severe</b>	3	3	2	1	2	4	7	6	6	11	11	8	6	11
<b>Very severe</b>	8	9	9	7	7	7	7	8	8	7	9	12	12	11

Age group	Total	Severe ( % )	Very severe ( % )
Total	22	11 ( 100.0 )	11 ( 100.0 )
80 and above	4	1 ( 9.1 )	3 ( 27.3 )
70-79	5	3 ( 27.3 )	2 ( 18.2 )
60-69	5	2 ( 18.2 )	3 ( 27.3 )
50-59	6	4 ( 36.4 )	2 ( 18.2 )
40-49	2	1 ( 9.1 )	1 ( 9.1 )
30-39	0	0 ( 0.0 )	0 ( 0.0 )
20-29	0	0 ( 0.0 )	0 ( 0.0 )
10-19	0	0 ( 0.0 )	0 ( 0.0 )
0-9	0	0 ( 0.0 )	0 ( 0.0 )

[Figure 4: New cases (for last 2 weeks) by chain of transmission]

