



KCDC

Korea Centers for Disease Control & Prevention

Updates on COVID-19 in Republic of Korea

5 June 2020

- As of 0:00, 5 June 2020, the total number of confirmed cases is 11,668 (including 1,280 imported cases), of which 10,506 cases have been discharged from isolation. Newly confirmed cases are 39 in total.

[Table 1. Total reported/tested cases]

Period (since 3 Jan)	Total	Tested positive (PCR)				Testing in progress	Tested negative (PCR)
		Confirmed	Discharged from isolation	Under isolation	Deceased		
As of 0:00 4 June (Thurs)	973,858	11,629	10,499	857	273	28,199	934,030
As of 0:00 5 June (Fri)	990,960	11,668	10,506	889	273	28,766	950,526
Difference	(+)17,102	(+)39	(+)7	(+)32	0	(+)567	(+)16,496

[Table 2. Imported cases in Korea (as of 0:00, 5 June 2020)]

	Total	Region/Country						Where confirmed		Nationality	
		China	Asia ex-China	Europe	Americas	Africa	Australia	Point of Entry	Community	Korean	Other
New	5	0	1	1	3	0	0	1	4	5	0
Total	1,280	19 (1.5%)	234 (18.3%)	476 (37.2%)	542 (42.3%)	8 (0.6%)	1 (0.1%)	540 (42.2%)	740 (57.8%)	1,116 (87.2%)	164 (12.8%)

* Figures may change based on findings from ongoing local epidemiological investigation efforts.

- Of the 39 new cases, 5 were imported cases and 34 were locally transmitted cases.
 - Of the 5 imported cases, 3 are from America, 1 from Europe, 1 from the Philippines.
- Related to the Coupang logistics center cluster in Bucheon-si, Gyeonggi Province, 4 additional cases were confirmed. In total, 124* cases have been confirmed.
 - * 79 workers of the logistics center; 45 contacts / Gyeonggi=57, Incheon=46, Seoul=21
- Related to the newly planted churches in the Seoul Metropolitan Region, 10 new cases were confirmed. In total, 76* cases have been confirmed.
 - *Related to church = 30; Contacts = 46 / Incheon = 42; Seoul = 20; Gyeonggi = 14
- Related to Richway in Gwanak-gu, Seoul, 19 additional cases were confirmed. In total, 29 case have been confirmed. All persons who have visited Richway (Seoul Gwangak-gu Siheungdae-ro 552 Seocheon Building Floor 8) between 21 May ~ 3 June are advised to get tested regardless of symptoms.
 - *Seoul = 18; Gyeonggi = 5; Incheon = 4; Chungnam = 2
- Related to the Seoul Seocho-gu family, 1 additional case was confirmed. The new case was a staff at AXA General Insurance Call Center in Jongno-gu, Seoul. In total, 7 cases have been confirmed related to this cluster.



KCDC

Korea Centers for Disease
Control & Prevention

Updates on COVID-19 in Republic of Korea

5 June 2020

- Related to Jesus Malsseum Silcheon Church, a new case was confirmed on 1 June and 5 cases have been confirmed in total to date. Investigation on the chain of transmission and contact tracing are underway.
- In Dalseo-gu, Daegu City, a middle school student who presented with fever and sputum was tested through a screening clinic and was confirmed by a positive test. Investigation on the chain of transmission and measures to stop further transmission are underway.
- Through testing of all persons related to boarding schools in Gyeongsan-si, Gyeongbuk Province, a teacher at Gyeongbuk Food Science Meister High School tested positive. The school has switched to remote learning and disinfection of the school facility is underway.
- The data on chains of transmission for the infection during the last 2 weeks show that most (73.2%, 385 cases) are local community clusters. 9.7% (51 cases) are under investigation (on the chain of transmission). 96.6% (372 cases) of the local cluster cases are in Seoul Metropolitan Region. 74.5% (38 cases) of the case under investigation are in Seoul Metropolitan Region.
- Recently, COVID-19 transmissions are occurring through various venues such as religious small group meetings, PC cafes, after-school academies in Seoul Metropolitan Region (Seoul and nearby areas) with high population density and foot traffic. If the transmission continues and occurs at a highly crowded and confined space with a large number of people, a massive outbreak may occur at any time.
 - Although the current overall case fatality rate for COVID-19 infection is relatively low (2.34%), it is much higher at 13.07% for people aged 65 or older. The fatality rate rises rapidly for older groups. (60s=2.68%; 70s=10.79%; 80 or above=26.39%) Therefore, everyone needs to be very careful to ensure that people in high-risk groups (people aged 65 or older, pregnant women, people with chronic illness, etc) are not infected.
 - Since COVID-19 outbreak can occur from any venue under crowded, confined, and close-contact environment, residents of the Seoul Metropolitan Region are advised to postpone social plans and gatherings or use non-face-to-face alternatives and avoid using public venues such as restaurants and bars.
 - In daily routine, mask wearing, frequent hand washing, and physical distancing should be practiced.
 - Religious facilities are advised to cancel or postpone or switch to non-face-to-face methods all small group gatherings that involve droplet-producing activities such as conversing, singing, and eating together in confined spaces.
 - If having an on-site service is unavoidable, the religious facility hosting the event must reduce the number of participants to ensure that participants can maintain proper distance, check people for fever and other suspected symptoms, ensure hand washing, and require mask wearing. Providing mass meal or activities that make respiratory droplets travel in air (such as singing, shouting, and chanting)



KCDC

Korea Centers for Disease
Control & Prevention

Updates on COVID-19 in Republic of Korea

5 June 2020

should be avoided.

- Nightlife venues, singing rooms, after-school private academies, and PC cafes in Seoul Metropolitan Region are under gathering ban or recommendation to limit operation as per the executive action of respective municipalities or the Central Disaster Management Headquarters.
 - If operation is unavoidable, such facilities must follow all infection control measures including maintaining a log of all visitors, requiring mask wearing, preventing entry of symptomatic persons, checking workers for symptoms, sending symptomatic worker home, designating an infection control manager, disinfecting indoor spaces, and ensuring at least 2 meters of distance between users.
 - KCDC requested municipalities to enhance inspections to ensure high compliance of the infection control measures by such facilities.
- Korea National Institute of Health (KNIH) is actively participating in the global vaccine development efforts. A COVID-19 vaccine candidate developed in the US (INOVIO's INO-4800) have been approved for domestic clinical trial phase 1 and 2.
 - The clinical trial will be overseen by the International Vaccine Institute and conducted at Seoul National University. Laboratory analysis of clinical specimens will be conducted by the KNIH.
 - Biosafety Level 3 (BSL-3) facilities* will be available for use by private sector organizations to COVID-19 treatment and vaccine development. Interested parties in industry, academia, and research are invited to apply.
 - * 19 public institutions, 7 educational institutions, 1 private sector institution, 4 medical institutions
 - ** Refer to websites of KCDC, KNIH, Ministry of SMEs and Startups, and Korea Association of University, Research Institute, and Industry
- For the COVID-19 plasma therapy development, 8 new recovered patients signed up to participate in blood donation. (In total, 26 have signed up.) KCDC thanked the donors for support and requested more recovered patients for participation.
 - Concentrated formulations of antibodies and immunoglobulins in the blood plasma of recovered patients can be used to treat other COVID-19 patients. This process requires a lot of blood.
 - People aged 18-65 who have been confirmed with COVID-19, fully recovered, discharged (released) from isolation (at least 14 days ago) are able to participate.
 - * Participating hospitals: Korea University Ansan Hospital, Keimyung University Dongsan Hospital, Kyungpook National University Hospital, Daegu Fatima Hospital / For inquiries, dial 1522-6487



KCDC

Korea Centers for Disease Control & Prevention

Updates on COVID-19 in Republic of Korea

5 June 2020

[Table 3: Regional distribution and epidemiological links of the confirmed cases]

Region	Confirmed cases									Other major clusters
	Total	Imported cases	Clusters					Other*	New cases	
			Sub-total	Shin-cheonji	Other clusters	Contacts of confirmed cases	Imported cases			
Seoul	924	282	590	8	494	19	69	52	15	Nightclubs (134), Guro-gu call center (99), Manmin Central Church (41), Coupang (21), Dong-an Church-PC Cafe (20), Incheon newly planted churches group (20), KB Life Insurance PM Service Center (11), Samsung Medical Center (7), biblical language study meeting (6), KCCC (5) , Richway (9) , Yeonana News Class (4), etc.
Busan	147	29	88	12	57	18	1	30	0	Onchun Church (39), Suyeong-gu Kindergarten (5), Itaewon clubs (4), etc.
Daegu	6,886	28	6,118	4,511	686	917	4	740	1	Second Mi-Ju Hospital (196), Hansarang Convalescent Hospital (128), Daesil Convalescent Hospital (100), Fatima Hospital (39), Nightclubs (2), etc.
Incheon	262	48	206	2	191	6	7	8	6	Nightclubs (54), Coupang (46) , Incheon newly planted churches group (40) , Guro-gu call center (19), real estate agency (9) , Jesus Malseum Silcheon Church (4) , etc.
Gwangju	32	16	16	9	0	1	6	0	0	
Daejeon	46	15	22	2	12	8	0	9	0	Korea Forest Engineer Institute (3), etc.
Ulsan	52	21	24	16	2	3	3	7	0	
Sejong	47	4	42	1	38	3	0	1	0	Ministry of Oceans and Fisheries (31), gym facilities (8)
Gyeonggi	907	196	655	29	508	55	63	56	13	Grace River Church in Seongnam (67), Nightclubs (46), Coupang (57) , Uijeongbu St. Mary's Hospital (46), Guro-gu call center-Bucheon SaengMyeongSu Church (50), Anyang-Gunpo pastors group (15), Incheon newly planted churches group (14) , Happy Care Home (7), biblical language study meeting (7), KCCC (6), real estate agency (3), Richway (3) , etc.
Gangwon	57	16	34	17	17	0	0	7	0	Uijeongbu St. Mary's Hospital (9), Apartments in Wonju City (3), Nightclubs (2), etc.
Chungbuk	60	8	42	6	27	7	2	10	0	Goesan-gun Jangyeon-myeon (11), Itaewon clubs (9), Guro-gu call center (2), etc.
Chungnam	147	13	124	0	122	1	1	10	1	Gym facilities in Cheonan (103), research center in Seosan (8), Richway (1) , etc.
Jeonbuk	21	10	6	1	5	0	0	5	0	Nightclubs (2)
Jeonnam	20	12	5	1	1	2	1	3	0	
Gyeongbuk	1,382	16	1,233	566	477	190	0	133	2	Cheongdo Daenam Hospital (119), Bonghwa Pureun Nursing Home (68), Gyeongsan Seo Convalescent Hospital (66), pilgrimage to Israel (41), Yecheon-gun (40), Gumi Elim Church (9), etc.
Gyeongnam	123	17	87	32	48	6	1	19	0	Geochang Church (10), Wings Tower (10), Geochang Woongyang-myeon (8), Nightclubs (2), etc.
Jeju	15	9	2	0	1	0	1	4	0	
Airport	540	540	0	0	0	0	0	0	1	
Total	11,668 (%)	1,280 (60.0)	9,294 (13.3)	5,213 (6.7)	2,686 (0.0)	1,236 (6.7)	159 (26.7)	1,094 (0.0)	39	

* Not classified into a cluster or under investigation

※ The interim classification is based on the reporting location, which may change depending on further epidemiological investigation.



KCDC

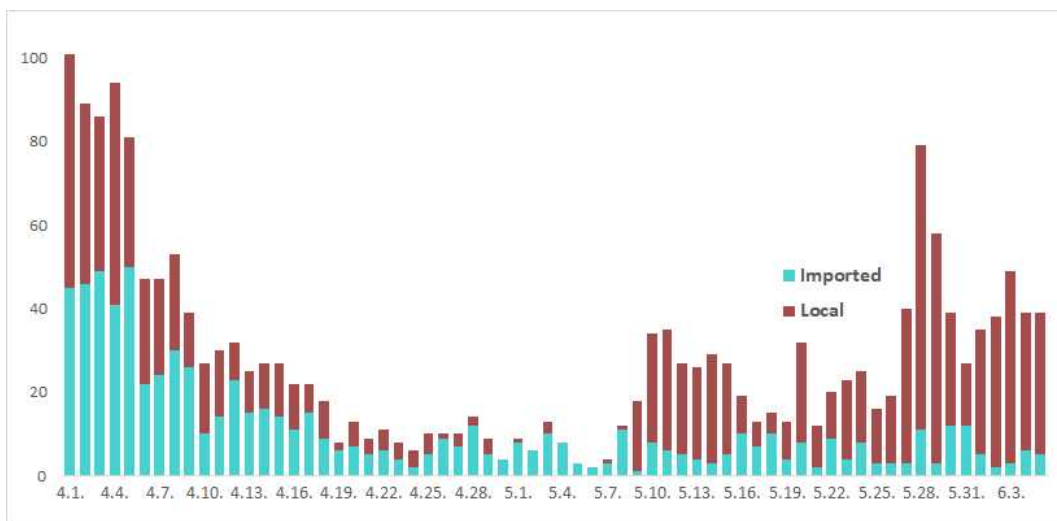
Korea Centers for Disease Control & Prevention

Updates on COVID-19 in Republic of Korea

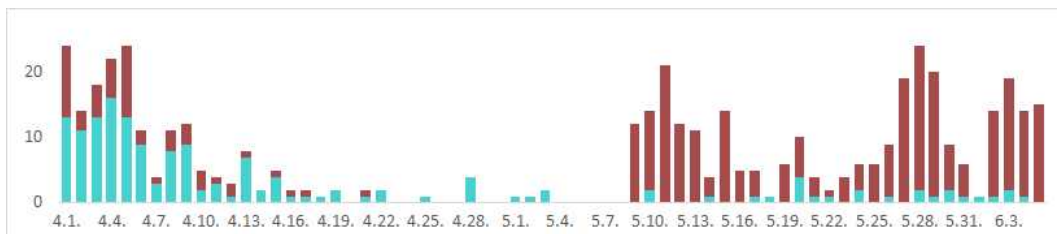
5 June 2020

[Figure 1: Daily new confirmed cases by chain of transmission]

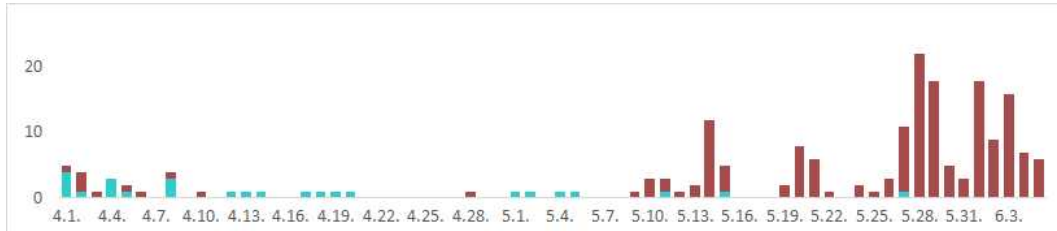
TOTAL



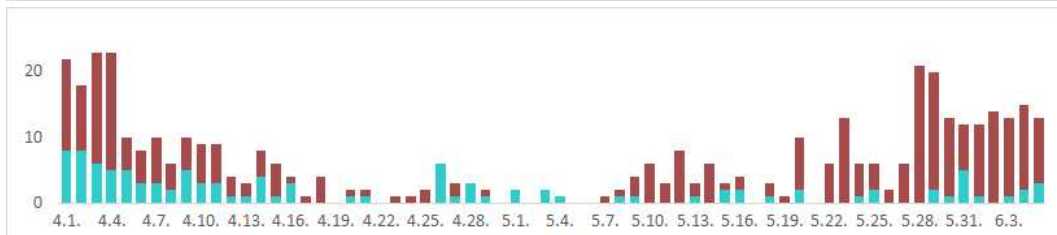
Seoul City



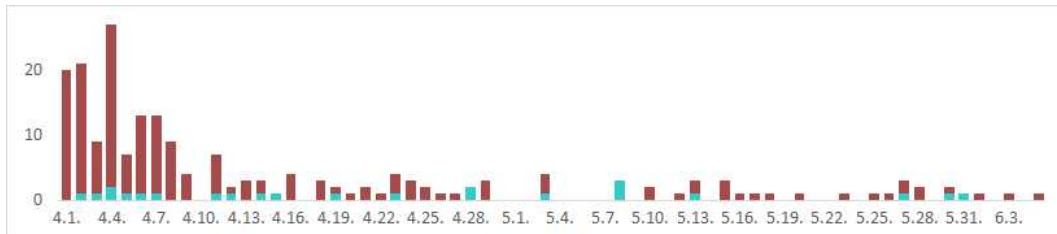
Incheon City



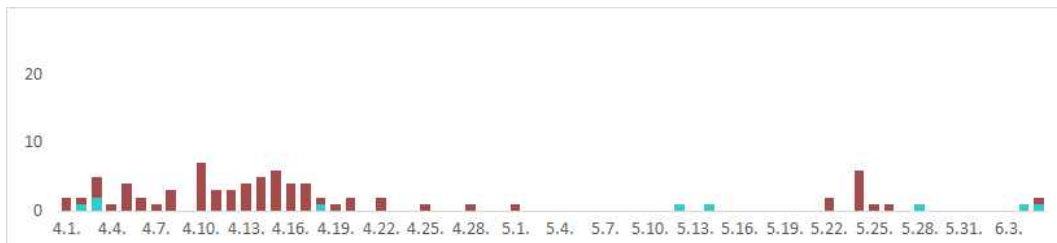
Gyeonggi Province



Daegu City



Gyeongbuk Province





KCDC

Korea Centers for Disease Control & Prevention

Updates on COVID-19 in Republic of Korea

5 June 2020

[Table 4: Age distribution of severe cases]

Age group	Total	Severe (%)	Very severe (%)
Total	11	4 (100.0)	7 (100.0)
80 and above	5	2 (50.0)	3 (42.9)
70-79	1	0 (0.0)	1 (14.3)
60-69	0	0 (0.0)	0 (0.0)
50-59	3	2 (50.0)	1 (14.3)
40-49	2	0 (0.0)	2 (28.6)
30-39	0	0 (0.0)	0 (0.0)
20-29	0	0 (0.0)	0 (0.0)
10-19	0	0 (0.0)	0 (0.0)
0-9	0	0 (0.0)	0 (0.0)

[Figure 2: New cases (for last 2 weeks) by chain of transmission]

