



- As of 0:00, 8 June 2020, the total number of confirmed cases is 11,814 (including 1,297 imported cases), of which 10,563 cases have been discharged from isolation. Newly confirmed cases are 38 in total.

[Table 1. Total reported/tested cases]

Period (since 3 Jan)	Total	Tested positive (PCR)				Testing in progress	Tested negative (PCR)
		Confirmed	Discharged from isolation	Under isolation	Deceased		
As of 0:00 7 June (Sun)	1,012,769	11,776	10,552	951	273	26,481	974,512
<b>As of 0:00 8 June (Mon)</b>	1,018,214	11,814	10,563	978	273	24,374	982,026
<b>Difference</b>	(+)5,445	(+)38	(+)11	(+)27	0	(-)2,107	(+)7,514

[Table 2. Imported cases in Korea (as of 0:00, 8 June 2020)]

	Total	Region/Country						Where confirmed		Nationality	
		China	Asia ex-China	Europe	Americas	Africa	Australia	Point of Entry	Community	Korean	Other
<b>New</b>	5	0	2	0	3	0	0	3	2	4	1
<b>Total</b>	1,297	19 (1.5%)	241 (18.6%)	476 (36.7%)	552 (42.6%)	8 (0.6%)	1 (0.1%)	550 (42.4%)	747 (57.6%)	1,129 (87.0%)	168 (13.0%)

\* Figures may change based on findings from ongoing local epidemiological investigation efforts.

- Of the 38 new cases, 5 were imported cases and 33 were locally transmitted cases.
  - Of the 5 imported cases, 3 are from America, 2 from India.
- Related to the nightclub cluster, 1 additional case was confirmed from testing at the end of self-quarantine period. In total, 274\* cases have been confirmed related to the nightclubs.
  - \* Club visitors=96; Contacts =178 / Seoul City=136, Gyeonggi Province=59, Incheon City=54, Chungbuk Province=9, Busan City=4, Daegu City=2, Gyeongnam Province=2, Gangwon Province=2, Jeonbuk Province=2, Daejeon City=1, Chungnam Province=1, Gyeongbuk Province=1, Jeju Province=1
- Related to the Coupang logistics center cluster in Bucheon-si, Gyeonggi Province, 5 additional cases were confirmed. 4 were confirmed from testing at the end of self-quarantine period. 1 was a contact and was confirmed while under quarantine. In total, 138\* cases have been confirmed.
  - \* 83 workers of the logistics center; 55 contacts / Gyeonggi=65, Incheon=52, Seoul=21
- Related to the newly planted churches in the Seoul Metropolitan Region, 4 additional cases were confirmed. In total, 86\* cases have been confirmed.
  - \*Related to church = 31; Contacts = 55 / Incheon = 45; Seoul = 26; Gyeonggi = 15
- Related to Richway in Gwanak-gu, Seoul, 7 additional cases were confirmed. In total, 52 case have been confirmed.
  - \*Seoul = 31; Gyeonggi = 10; Incheon = 8; Chungnam = 2; Gangwon = 1 / Visitors = 33; Contacts = 19



KCDC

Korea Centers for Disease  
Control & Prevention

## Updates on COVID-19 in Republic of Korea

8 June 2020

- Related to sports facility in Yangcheon-gu, Seoul, 41 cases in total have been confirmed. Epidemiological investigation revealed that a person who visited the table tennis court in Yangcheon-gu, Seoul City on 28 May attended service at Big Tree Church in Yongin-si, Gyeonggi Province on 31 May. Based on this new finding, the two clusters are now classified together and renamed as "Yangcheon-gu sports facility".  
\*Related to the table tennis facility = 22; Related to Big Tree Church = 19
- Related to Gunpo/Anyang pastors group, 2 new cases were confirmed. Both were confirmed while under self-quarantine period. In total, 21\* cases have been confirmed.  
\*Attendees of the pastors group gathering = 7; Contacts = 14 (Family = 7; Church members = 4; Coworkers = 3)
- In Happy Care Home in Gwangju-si, Gyeonggi Province, 1 additional case was confirmed. The new case was a resident of the care home and was under isolation at hospital. In total, 9 cases have been confirmed to date.  
\*2 care workers, 6 residents, 1 social worker
- A student of Won Mook High School in Jungnang-gu, Seoul City was confirmed on 7 June. Testing is underway for approximately 800 people including students, staff, family, friends, and acquaintances.
  - It has been found that the student visited Lotte World Adventure on 5 June. People who visited Lotte World Adventure during 12:15-21:00 of Friday, 5 June have been notified and instructed to get tested at a screening clinic via emergency/public safety alerts on mobile devices. Students and staff who have visited the facility have been requested to stop going to school until their test results are available.
- Recently, COVID-19 transmissions are occurring through various venues such as religious small group meetings, club meetings, door-to-door sales group meetings in Seoul Metropolitan Region (Seoul and nearby areas) with high population density and foot traffic. If the transmission continues and occurs at a highly crowded and confined space with a large number of people, a massive outbreak may occur at any time.
  - Recent outbreaks have emerged from confined, poorly ventilated area where activities that make a large amount of respiratory droplets travel in air such as singing, eating, snacking, and sporting took place. Mask wearing, hand hygiene, and other preventive measures were not closely followed.
  - Since COVID-19 outbreak can occur from any venue under crowded, confined, and close-contact environment, residents of the Seoul Metropolitan Region are advised to postpone social plans and gatherings or use non-face-to-face alternatives and avoid using public venues such as restaurants and bars.
- In particular, elderly people who are 65 years old or older are requested to avoid any enclosed space that is poorly ventilated where a large number of people can gather together.



KCDC

Korea Centers for Disease  
Control & Prevention

# Updates on COVID-19 in Republic of Korea

8 June 2020

- If such an occasion is unavoidable, sharing meals and singing should be avoided. Masks should be worn and frequent hand washing or sanitizing should be practiced.
  
- It is also important for the elderly is take good care of any chronic medical conditions they have and exercise regularly.
  
- With students in middle school grade 1 and elementary school grades 5-6 returning to in-person classrooms today, the final phase of phased school reopening has been completed and students of all grades have returned to school. KCDC urged everyone to follow major COVID-19 prevention measures in schools.
  - Students who have fever or respiratory symptoms in the morning should not go to school. Facemasks should be worn at all times while in school. Masks should be worn at all times while in school. Places such as singing rooms, PC cafes, entertainment facilities, and other public venues should be avoided.
  
  - Staff including teachers should not go to work if having COVID-19 suspected symptoms and should avoid public venues such as nightclubs, bars, singing rooms and PC cafes. Attendance at club meetings and religious small group gatherings should also be avoided.
  
  - Any student or school staff having symptoms should get tested at a screening clinic. After receiving a test, they should immediately return home without stopping at other places and stay at home. At home, the student or staff should avoid coming in contact with other household members, wash hands frequently, wear a mask at home, and practice other precautions to prevent family transmission.
  
  - Although no transmission in schools have been reported to date, contacts under incubation period are being monitored. With all students back in school, stronger efforts to prevent in-school transmission are needed including monitoring suspected cases, symptom checking, ventilating and disinfecting, and maintaining proper distance.

## **COVID-19 PREVENTION MEASURES IN SCHOOLS**

- Do not go to school or work if having fever or respiratory symptoms
- Ventilate classrooms by opening windows
- Maintain constant distance between students
- Keep facemasks on at all times\* while in school
  - \*Exceptions allowed for meal times or health problems
- Maintain personal hygiene including hand washing and using hand sanitizers
- If having fever of 37.5 degrees or above or respiratory symptoms, immediately inform a health teacher and classroom teacher, put on an MFDS-approved health mask, and wait in a separate area
- Avoid karaoke rooms, PC cafes, bars, clubs, and other publicly used facilities



KCDC

Korea Centers for Disease Control & Prevention

# Updates on COVID-19 in Republic of Korea

8 June 2020

[Table 4: Regional distribution and epidemiological links of the confirmed cases]

Region	Confirmed cases									Other major clusters
	Total	Imported cases	Clusters					Other*	New cases	
			Sub-total	Shin-cheonji	Other clusters	Contacts of confirmed cases	Imported cases			
Seoul	996	282	656	8	557	22	69	58	22	<b>Nightclubs (136)</b> , Guro-gu call center (99), Manmin Central Church (41), Dong-an Church-PC Cafe (28), <b>Richway (30)</b> , <b>Incheon newly planted churches group (27)</b> , Coupang (21), KB Life Insurance PM Service Center (11), biblical language study meeting (6), KCCC (6), etc.
Busan	147	29	88	12	57	18	1	30	0	Onchun Church (39), Suyeong-gu Kindergarten (5), Itaewon clubs (4), etc.
Daegu	6,888	29	6,118	4,511	686	917	4	741	1	Second Mi-Ju Hospital (196), Hansarang Convalescent Hospital (124), Daesil Convalescent Hospital (101), Fatima Hospital (39), Nightclubs (2), etc.
Incheon	283	49	226	2	211	6	7	8	4	Nightclubs (54), <b>Coupang (51)</b> , <b>Incheon newly planted churches group (45)</b> , Guro-gu call center (19), Gyeyang-gu real estate agency (9), Richway (7), Jesus Malsseum Silcheon Church (5), Brothers in Yongin/Goyang (2), etc.
Gwangju	32	16	16	9	0	1	6	0	0	
Daejeon	46	15	22	2	12	8	0	9	0	Korea Forest Engineer Institute (3), etc.
Ulsan	53	22	24	16	2	3	3	7	0	
Sejong	47	4	42	1	38	3	0	1	0	Ministry of Oceans and Fisheries (31), gym facilities (8)
Gyeonggi	942	198	690	29	544	54	63	54	8	Grace River Church in Seongnam (67), Coupang (63), Nightclubs (59), Uijeongbu St. Mary's Hospital (50), Guro-gu call center-Bucheon SaengMyeongSu Church (50), <b>Anyang-Gunpo pastors group (19)</b> , Incheon newly planted churches group (15), <b>Yangcheon table tennis club (13)</b> , biblical language study meeting (9), <b>Richway (9)</b> , <b>Happy Care Home (9)</b> , KCCC (6), etc.
Gangwon	58	16	35	17	18	0	0	7	0	Uijeongbu St. Mary's Hospital (10), Apartments in Wonju (4), Nightclubs (2), etc.
Chungbuk	61	9	42	6	27	7	2	10	0	Goesan-gun Jangyeon-myeon (11), Itaewon clubs (9), Guro-gu call center (2), etc.
Chungnam	148	13	125	0	123	1	1	10	0	Gym facilities in Cheonan (103), research center in Seosan (8), Richway (2), etc.
Jeonbuk	21	10	6	1	5	0	0	5	0	Nightclubs (2)
Jeonnam	20	12	5	1	1	2	1	3	0	
Gyeongbuk	1,383	16	1,234	566	478	190	0	133	0	Cheongdo Daenam Hospital (119), Bonghwa Pureun Nursing Home (68), Gyeongsan Seo Convalescent Hospital (66), pilgrimage to Israel (41), Yecheon-gun (40), Gumi Elim Church (10), etc.
Gyeongnam	124	18	87	32	48	6	1	19	0	Geochang Church (10), Wings Tower (9), Geochang Woongyang-myeon (8), Nightclubs (2), etc.
Jeju	15	9	2	0	1	0	1	4	0	
Airport	550	550	0	0	0	0	0	0	3	
Total	11,814 (%)	1,297 (60.0)	9,418 (13.3)	5,213 (0.0)	2,808 (6.7)	1,238 (0.0)	159 (6.7)	1,099 (26.7)	38	

\* Not classified into a cluster or under investigation

※ The interim classification is based on the reporting location, which may change depending on further epidemiological investigation.



KCDC

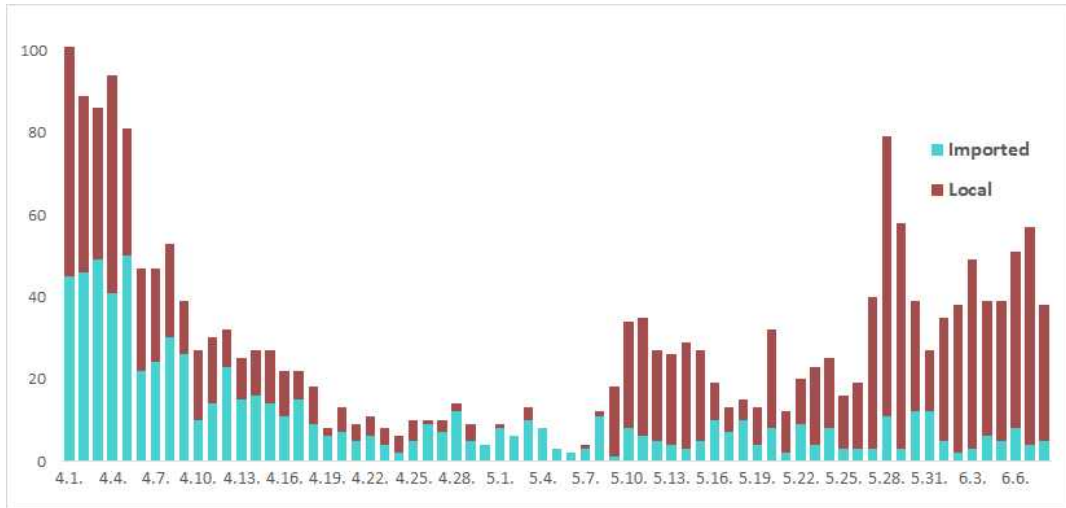
Korea Centers for Disease Control & Prevention

# Updates on COVID-19 in Republic of Korea

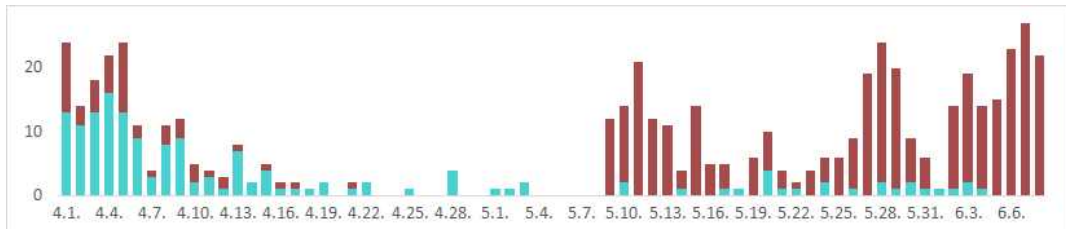
8 June 2020

[Figure 3: Daily new confirmed cases by chain of transmission]

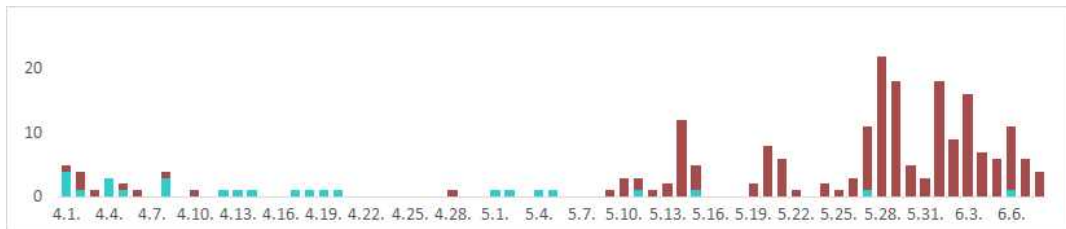
TOTAL



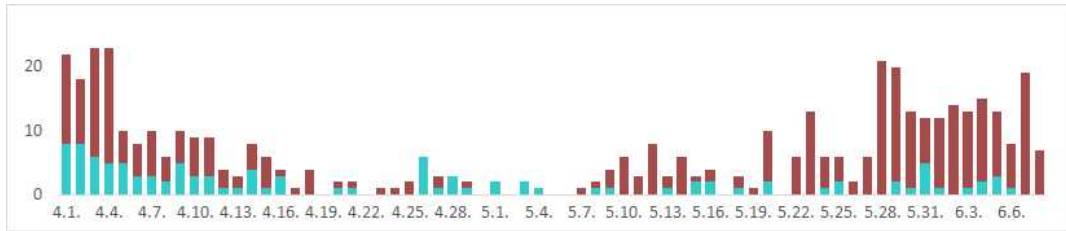
Seoul City



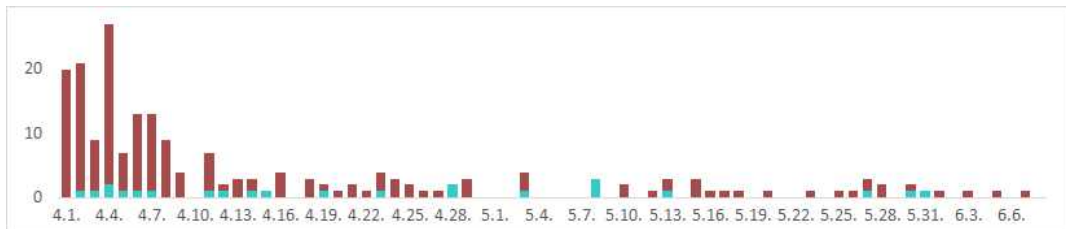
Incheon City



Gyeonggi Province



Daegu City



Gyeongbuk Province





KCDC

Korea Centers for Disease Control & Prevention

# Updates on COVID-19 in Republic of Korea

8 June 2020

[Table 5: Age distribution of severe cases]

Age group	Total	Severe ( % )	Very severe ( % )
Total	14	6 ( 100.0 )	8 ( 100.0 )
80 and above	6	3 ( 50.0 )	3 ( 37.5 )
70-79	1	0 ( 0.0 )	1 ( 12.5 )
60-69	1	0 ( 0.0 )	1 ( 12.5 )
50-59	4	3 ( 50.0 )	1 ( 12.5 )
40-49	2	0 ( 0.0 )	2 ( 25.0 )
30-39	0	0 ( 0.0 )	0 ( 0.0 )
20-29	0	0 ( 0.0 )	0 ( 0.0 )
10-19	0	0 ( 0.0 )	0 ( 0.0 )
0-9	0	0 ( 0.0 )	0 ( 0.0 )

[Figure 4: New cases (for last 2 weeks) by chain of transmission]

