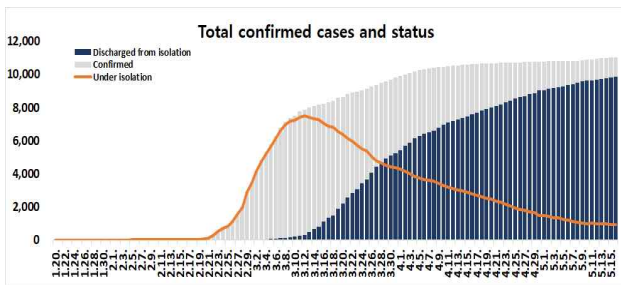
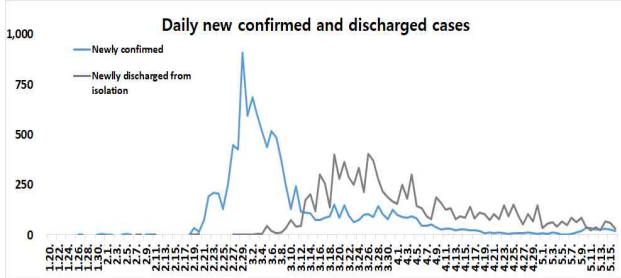




○ As of 0:00, 16 May 2020, the total number of confirmed cases is 11,037 (including 1,160 imported cases), of which 9,851 cases have been discharged from isolation. Newly confirmed cases are 19 in total.

Period (since 3 Jan)	Total	Tested positive (PCR)				Testing in progress	Tested negative (PCR)
		Confirmed	Discharged from isolation	Under isolation	Deceased		
As of 0:00 15 May (Fri)	726,747	11,018	9,821	937	260	19,875	695,854
As of 0:00 16 May (Sat)	740,645	11,037	9,851	924	262	18,343	711,265
Difference	(+13,898)	(+19)	(+30)	(-13)	2	(-1,532)	(+15,411)



○ Regional distribution of total confirmed cases:

	Total	City								
		Seoul	Busan	Daegu	Incheon	Gwangju	Daejeon	Ulsan	Sejong	
Isolated	924	152	11	321	39	0	3	4	0	
Discharged	9,851	574	130	6,367	85	30	39	40	47	
Deceased	262	4	3	181	0	0	1	1	0	
<b>Subtotal</b>	<b>11,037</b>	<b>730</b>	<b>144</b>	<b>6,869</b>	<b>124</b>	<b>30</b>	<b>43</b>	<b>45</b>	<b>47</b>	
New (Difference)	19	5	0	1	0	0	0	0	0	

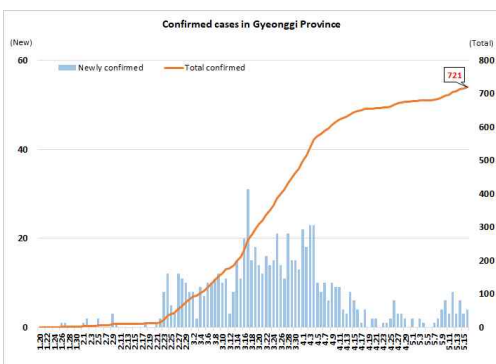
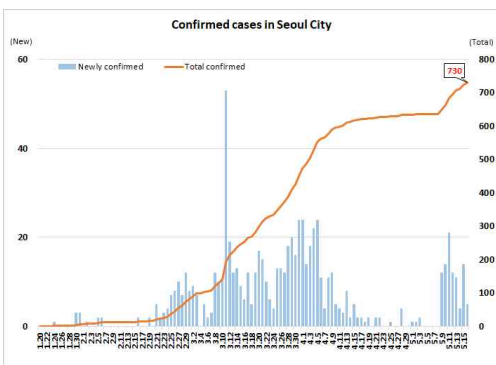
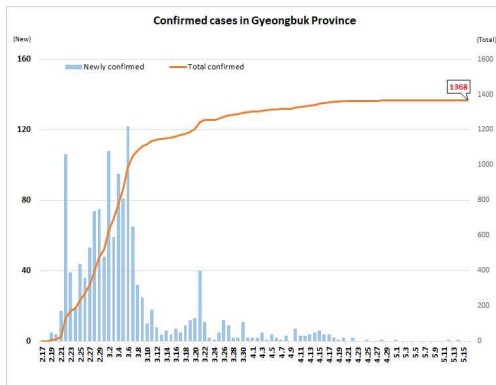
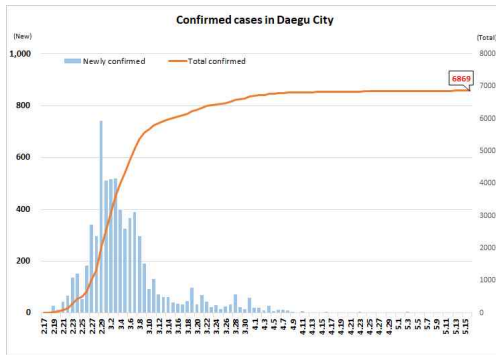
	Total	Province								Other
		Gyeonggi	Gangwon	Chungbuk	Chungnam	Jeonbuk	Jeonnam	Gyeongbuk	Gyeongnam	
Isolated	118	8	13	5	4	5	61	3	3	174
Discharged	587	45	43	139	16	13	1,253	116	11	316
Deceased	16	2	0	0	0	0	54	0	0	0
<b>Subtotal</b>	<b>721</b>	<b>55</b>	<b>56</b>	<b>144</b>	<b>20</b>	<b>18</b>	<b>1,368</b>	<b>119</b>	<b>14</b>	<b>490</b>
New (Difference)	4	0	1	0	0	0	0	0	0	8

○ Case distribution and incidence rate by region:

Region	# of cases	(%)	Incidence rate (per 0.1M)	Region	# of cases	(%)	Incidence rate (per 0.1M)
Seoul	730	(6.61)	7.50	Gyeonggi	721	(6.53)	5.44
Busan	144	(1.30)	4.22	Gangwon	55	(0.50)	3.57
Daegu	6,869	(62.24)	281.92	Chungbuk	56	(0.51)	3.50
Incheon	124	(1.12)	4.19	Chungnam	144	(1.30)	6.78
Gwangju	30	(0.27)	2.06	Jeonbuk	20	(0.18)	1.10
Daejeon	43	(0.39)	2.92	Jeonnam	18	(0.16)	0.97
Ulsan	45	(0.41)	3.92	Gyeongbuk	1,368	(12.39)	51.38
Sejong	47	(0.43)	13.73	Gyeongnam	119	(1.08)	3.54
Border Screening	490	(4.44)	-	Jeju	14	(0.13)	2.09
<b>Total</b>	<b>11,037</b>	<b>(100)</b>	<b>21.29</b>				



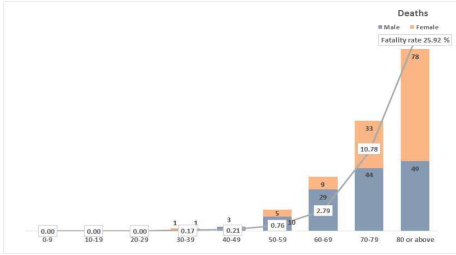
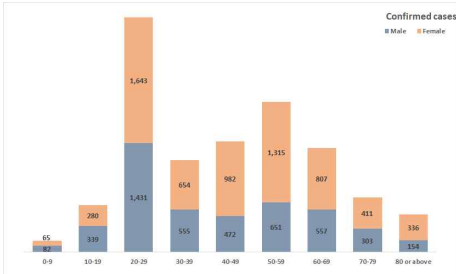
○ Daily case trends by region:



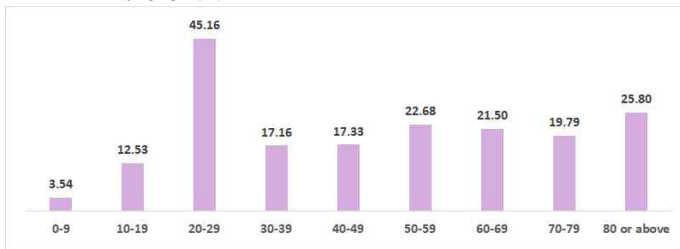


○ Case distribution by gender and age group:

		Confirmed Cases (%)	Deaths (%)	Fatality rate (%)
<b>Total</b>		11,037 (100)	262 (100)	2.37
<b>Sex</b>	Male	4,544 (41.17)	136 (51.91)	2.99
	Female	6,493 (58.83)	126 (48.09)	1.94
<b>Age</b>	80 or above	490 (4.44)	127 (48.47)	25.92
	70-79	714 (6.47)	77 (29.39)	10.78
	60-69	1,364 (12.36)	38 (14.50)	2.79
	50-59	1,966 (17.81)	15 (5.73)	0.76
	40-49	1,454 (13.17)	3 (1.15)	0.21
	30-39	1,209 (10.95)	2 (0.76)	0.17
	20-29	3,074 (27.85)	0 (0.00)	-
	10-19	619 (5.61)	0 (0.00)	-
	0-9	147 (1.33)	0 (0.00)	-



○ Incidence rate by age group (per 100,000):



○ Imported cases:

