



KCDC

Korea Centers for Disease Control & Prevention

Updates on COVID-19 in Republic of Korea

28 May 2020

- As of 0:00, 28 May 2020, the total number of confirmed cases is 11,344 (including 1,232 imported cases), of which 10,340 cases have been discharged from isolation. Newly confirmed cases are 79 in total.

[Table 1. Total reported/tested cases]

Period (since 3 Jan)	Total	Tested positive (PCR)				Testing in progress	Tested negative (PCR)
		Confirmed	Discharged from isolation	Under isolation	Deceased		
As of 0:00 27 May (Wed)	852,876	11,265	10,295	701	269	21,061	820,550
As of 0:00 28 May (Thurs)	868,666	11,344	10,340	735	269	22,370	834,952
Difference	(+)15,790	(+)79	(+)45	(+)34	0	(+)1,309	(+)14,402

[Table 2. Imported cases in Korea (as of 0:00, 28 May 2020)]

	Total	Region/Country						Where confirmed		Nationality	
		China	Asia ex-China	Europe	Americas	Africa	Australia	Point of Entry	Community	Korean	Other
New	11	0	8	0	3	0	0	7	4	6	5
Total	1,232	19 (1.5%)	213 (17.3%)	469 (38.1%)	522 (42.4%)	8 (0.6%)	1 (0.1%)	529 (42.9%)	703 (57.1%)	1,082 (87.8%)	150 (12.2%)

* Figures may change based on findings from ongoing local epidemiological investigation efforts.

- Of the 79 new cases, 11 were imported cases and 68 were locally transmitted cases.
 - Of the 11 imported cases, 3 are from America, 7 from Bangladesh, 1 from Kuwait.
- Related to the Coupang logistics center in Bucheon-si, Gyeonggi Province, 46 additional cases were confirmed, bringing the total to 82*. Self-quarantine and testing is underway for all workers who have worked at the logistics center since 12 May.
 - *63 workers of the logistics center; 19 contacts (family members sharing living space) / Incheon=38, Gyeonggi=27, Seoul=17
 - KCDC requested workers who worked at Coupang logistics center during the period starting on 12 May should get tested (wearing mask mandatory) and self-quarantine. Also, if there is student or a school staff among family, they should stop going to school. If there is a healthcare worker or social worker among family, they should limit work.
- Since 26 May when a first case was confirmed at KB Life Insurance Call Center in Jung-gu, Seoul City, 7 cases in total have been confirmed to date. All workers at the call center have been placed in self-quarantine, and testing is underway for all workers at the call center.
- In Daegu City, 1 case was confirmed from testing of all new recruits entering the military, and 1 case was confirmed from testing of all hagwon (after-school private academy) teachers. Epidemiological investigation on chain of transmission and contacts is underway.



KCDC

Korea Centers for Disease Control & Prevention

Updates on COVID-19 in Republic of Korea

28 May 2020

- As of 12:00 today (28 May), there are 261 confirmed cases in total related to the nightclubs, including 2* new cases since 12:00 yesterday.

*(Seoul) Chamnara Charcoal BBQ case's child=1; Geumho 7080 visitor's coworker=1

- **(By region)** Seoul City=131, Gyeonggi Province=59, Incheon City=47, Chungbuk Province=9, Busan City=4, Daegu City=2, Gyeongnam Province=2, Jeonbuk Province=2, Daejeon City=1, Chungnam Province=1, Gyeongbuk Province=1, Gangwon Province=1, Jeju Province=1
- **(By chain of transmission)** Club visitors=96; Contacts (family/acquaintance/coworkers/etc)=165
- **(By age group)** [0-18]=28; [19-29]=130; [30-39]=36; [40-49]=22; [50-59]=19; [60+]=26
- **(By sex)** male 196, female 65

- In an effort to stop further local transmission of COVID-19 within communities as early as possible, KCDC is conducting mass testing of persons who visited public venues and events visited by confirmed COVID-19 cases.

- Persons who visited such places during the respective specified time period are advised to visit a screening clinic and get tested regardless of symptoms. (The list is provided on the final page.)

- KCDC is developing plasma treatment for COVID-19 confirmed patients.

- Recovered patients have antibodies and immunoglobulins present in their blood plasma, which can be concentrated and formulated for use in treating other patients. This requires a large amount of blood.

- KCDC requested help from as many fully recovered patients as possible. People who would like to donate their blood can dial 1522-6787 to reach the call center.

- KCDC requested students and school staff to closely follow the infectious disease prevention measures.

COVID-19 PREVENTION MEASURES IN SCHOOLS

- Do not go to school or work if having fever or respiratory symptoms
- Ventilate classrooms by opening windows
- Maintain constant distance between students
- Keep facemasks on at all times* while in school
*Exceptions allowed for meal times or health problems
- Maintain personal hygiene including hand washing and using hand sanitizers
- If having fever of 37.5 degrees or above or respiratory symptoms, immediately inform a health teacher and classroom teacher, put on an MFDS-approved facemask, and wait in a separate area
- Avoid karaoke rooms, PC cafes, bars, clubs, and other publicly used facilities

- If a confirmed case is found in a school, all students, teachers, and staff of the school will be instructed to put on an MFDS-approved facemask and return home. Local municipal government will conduct epidemiological investigation, disinfection, restriction of use of the affected facility, and other necessary infection control measures.

- In light of the recent rise in local transmissions related to places of business, religious facilities, bars, restaurants and others, KCDC urged people to refrain from social gathering or visiting any enclosed/confined/crowded spaces that are frequented by many people.



KCDC

Korea Centers for Disease
Control & Prevention

Updates on COVID-19 in Republic of Korea

28 May 2020

- People who cannot avoid visiting an enclosed/crowded space for an essential reason should carefully follow personal hygiene measures including keeping 2 meters of distance from other people, wearing a facemask, avoiding handshakes, washing hands, and not touching eyes, nose, or mouth with their hands.
- Persons belonging to high-risk groups (including elderly, pregnant women, persons with chronic illness) should especially avoid any poorly ventilated enclosed space frequented by many people. If such a situation cannot be avoided for an essential reason, it is highly important to wear a facemask.
- In business establishments, all persons should wear a facemask when using indoor break rooms, changing rooms, or other publicly shared indoor areas. Such areas should not be used by multiple people at the same time.
 - Indoor smoking rooms should be prohibited and outdoor areas should be utilized instead. Commute buses should have hand sanitizers in place and disinfect frequently touched surfaces such as handles.
 - Cafeterias should operate in time shifts and install dividers between seats or have people sit in one line or in alternating arrangement to avoid sitting face-to-face while eating.
- Anyone who has come in close contact with a large number of unspecified persons in an enclosed/confined space such as clubs or bars need to be tested at a screening clinic through public health center or 1339 call center.
 - KCDC urged people to visit a screening clinic and get tested especially if two or more persons within a household or social group develop COVID-19 suspected symptoms.

"5 Basic Infection Prevention Rules for Everyone"

- (1) Stay home for 3-4 days if you get sick.
- (2) Keep a distance of two arms' length between you and other people.
- (3) Wash your hands for 30 seconds. Cough/sneeze into your sleeve.
- (4) Ventilate your space at least twice a day and disinfect regularly.
- (5) Keep in touch with family and friends while maintaining physical distancing.



KCDC

Korea Centers for Disease Control & Prevention

Updates on COVID-19 in Republic of Korea

28 May 2020

[Table 3: Regional distribution and epidemiological links of the confirmed cases]

Region	Confirmed cases									Other major clusters
	Total	Imported cases	Clusters					Other*	New cases	
			Sub-total	Shin-cheonji	Other clusters	Contacts of confirmed cases	Imported cases			
Seoul	826	273	520	8	425	18	69	33	24	Itaewon clubs (131), Coupang (15), biblical language study meeting (4), Samsung Medical Center (7), Guro-gu call center (98), Dong-an Church-PC Cafe (20), Manmin Central Church (41), etc.
Busan	145	28	88	12	57	18	1	29	1	Itaewon clubs (4), Onchun Church (39), Suyeong-gu Kindergarten (5), etc.
Daegu	6,880	26	6,118	4,510	684	920	4	736	2	Itaewon clubs (3), Second Mi-Ju Hospital (196), Hansarang Convalescent Hospital (128), Daesil Convalescent Hospital (100), Fatima Hospital (37), etc.
Incheon	180	48	127	2	112	6	7	5	22	Itaewon clubs (47), Coupang (30), Guro-gu call center (20), etc.
Gwangju	30	14	16	9	0	1	6	0	0	
Daejeon	45	14	22	2	12	8	0	9	0	Korea Forest Engineer Institute (3), etc.
Ulsan	50	19	24	16	2	3	3	7	0	
Sejong	47	4	42	1	38	3	0	1	0	Ministry of Oceans and Fisheries (30), gym facilities (8)
Gyeonggi	795	181	566	29	423	52	62	48	21	Itaewon clubs (59), Coupang (24), biblical language study meeting (7), first responder (3), Grace River Church in Seongnam (72), Guro-gu call center-Bucheon SaengMyeongSu Church (48), Uijeongbu St. Mary's Hospital (50), etc.
Gangwon	56	16	33	17	16	0	0	7	0	Apartments in Wonju City (3), Uijeongbu St. Mary's Hospital (10), etc.
Chungbuk	60	8	42	6	27	7	2	10	0	Itaewon clubs (9), Goesan-gun Jangyeon-myeon (11), etc.
Chungnam	146	13	123	0	121	1	1	10	1	Gym facilities in Cheonan (103), research center in Seosan (9), etc.
Jeonbuk	21	10	6	1	5	0	0	5	0	Itaewon clubs (2)
Jeonnam	18	10	5	1	1	2	1	3	0	
Gyeongbuk	1,379	14	1,233	566	477	190	0	132	1	Gumi Elim Church (8), Cheongdo Daenam Hospital (120), Bonghwa Pureun Nursing Home (68), pilgrimage to Israel (49), Gyeongsan Seo Convalescent Hospital (66), Yecheon-gun (41), etc.
Gyeongnam	123	17	87	32	48	6	1	19	0	Itaewon clubs (2), Geochang Church (10), Geochang Woongyang-myeon (8), Wings Tower (10), etc.
Jeju	14	8	2	0	1	0	1	4	0	
Airport	529	529	0	0	0	0	0	0	7	
Total	11,344 (%)	1,232 (57.1)	9,054 (14.3)	5,212 (7.1)	2,449 (0.0)	1,235 (7.1)	158 (28.6)	1,058 (0.0)	79	

* Not classified into a cluster or under investigation

※ The interim classification is based on the reporting location, which may change depending on further epidemiological investigation.



KCDC

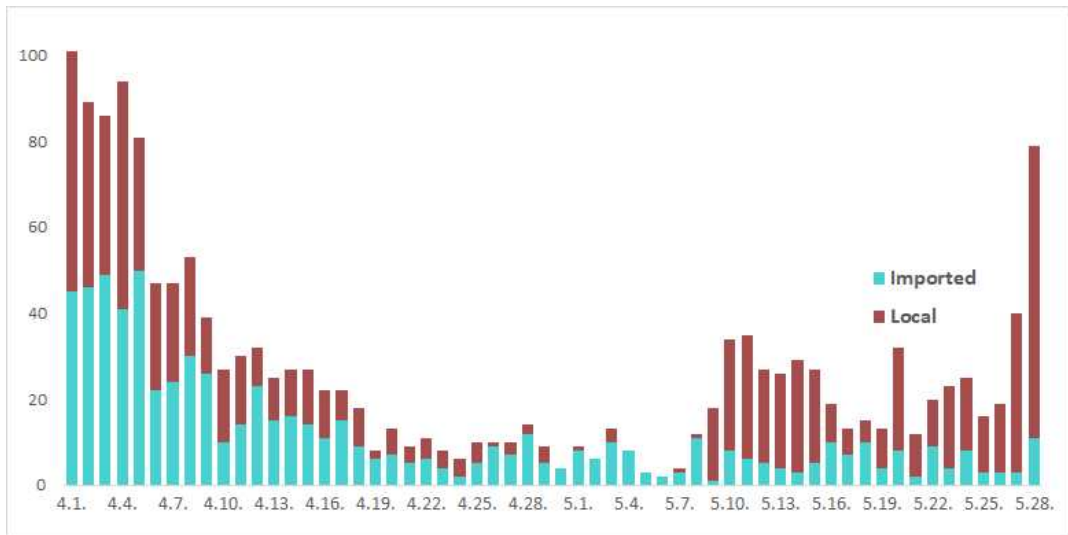
Korea Centers for Disease Control & Prevention

Updates on COVID-19 in Republic of Korea

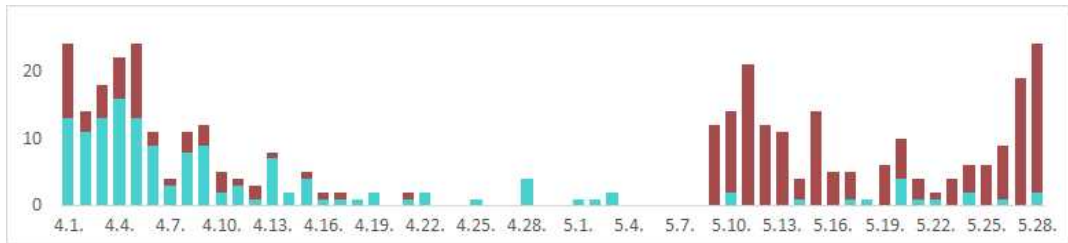
28 May 2020

[Figure 1: Daily new confirmed cases by chain of transmission]

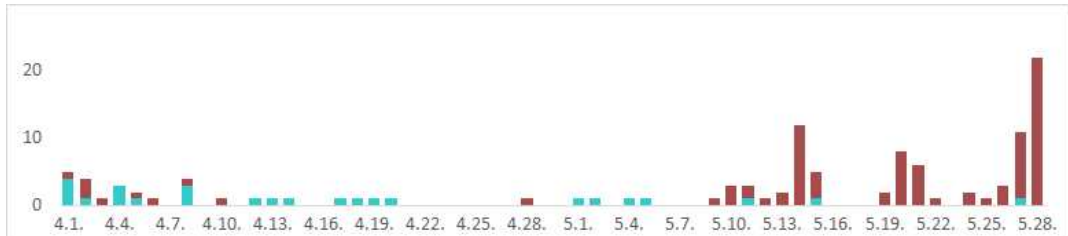
TOTAL



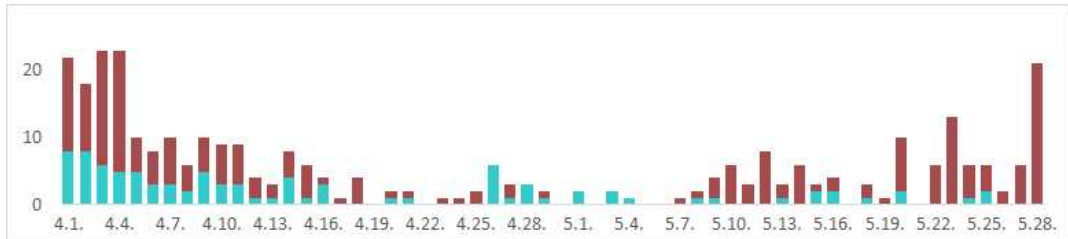
Seoul City



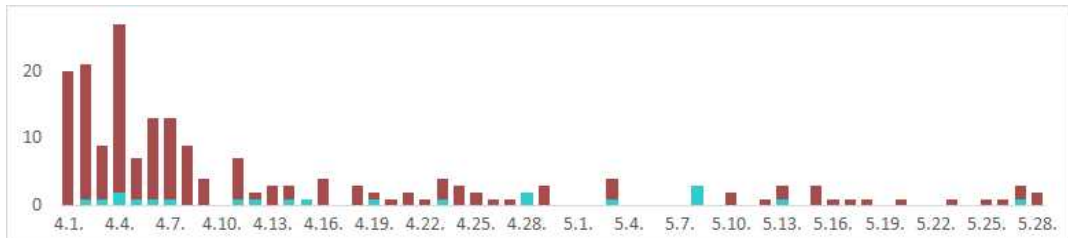
Incheon City



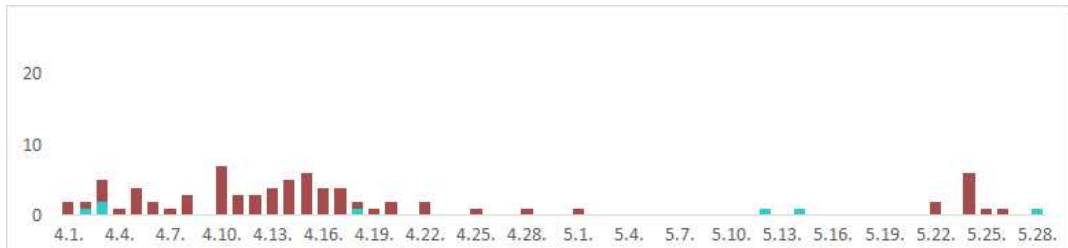
Gyeonggi Province



Daegu City



Gyeongbuk Province





KCDC

Korea Centers for Disease Control & Prevention

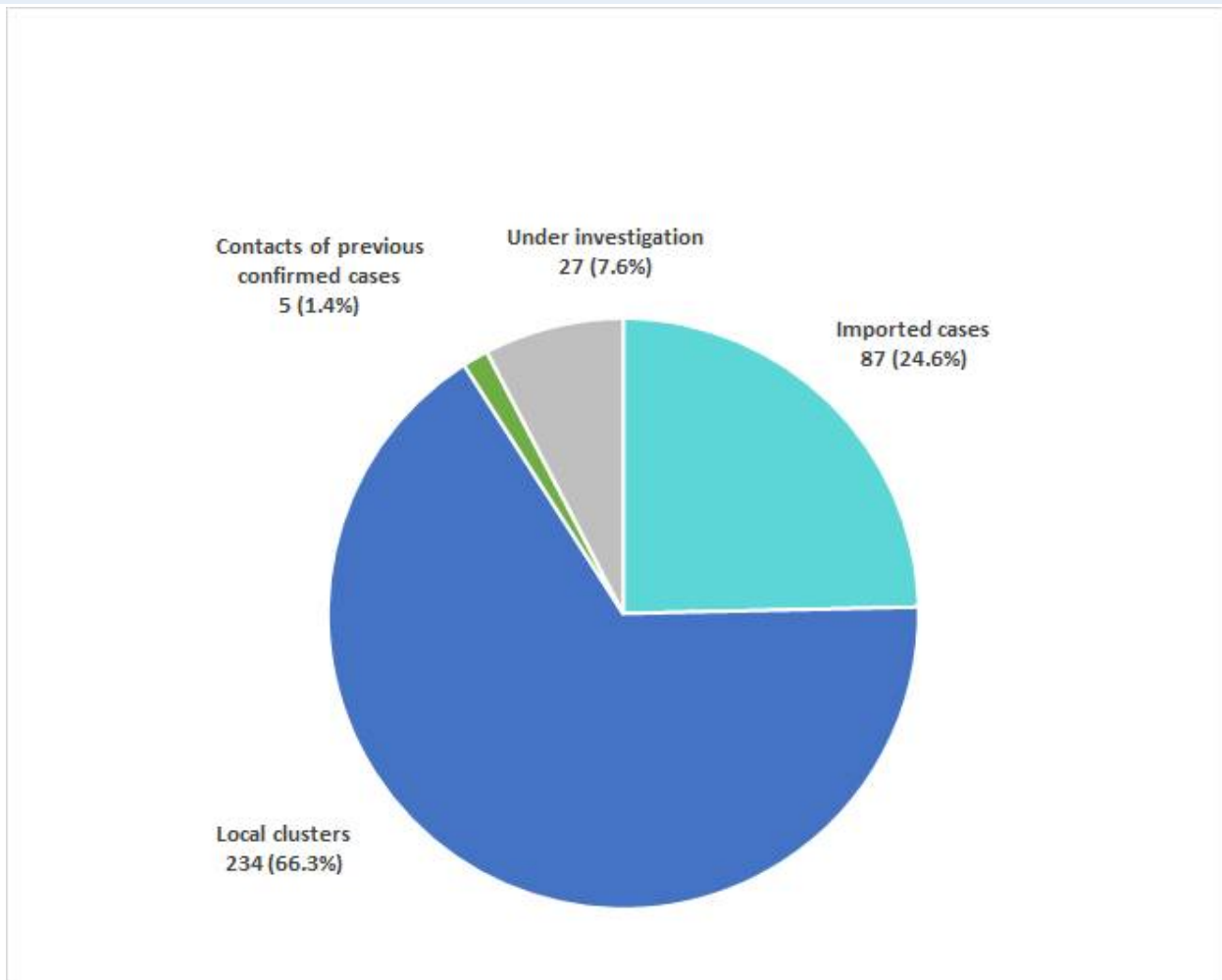
Updates on COVID-19 in Republic of Korea

28 May 2020

[Table 4: Age distribution of severe cases]

Age group	Total	Severe (%)	Very severe (%)
Total	11	4 (100.0)	7 (100.0)
80 and above	3	2 (50.0)	1 (14.3)
70-79	3	1 (25.0)	2 (28.6)
60-69	2	1 (25.0)	1 (14.3)
50-59	1	0 (0.0)	1 (14.3)
40-49	2	0 (0.0)	2 (28.6)
30-39	0	0 (0.0)	0 (0.0)
20-29	0	0 (0.0)	0 (0.0)
10-19	0	0 (0.0)	0 (0.0)
0-9	0	0 (0.0)	0 (0.0)

[Figure 2: New cases (for last 2 weeks) by chain of transmission]





KCDC

Korea Centers for Disease Control & Prevention

Updates on COVID-19 in Republic of Korea

28 May 2020

[Table 5: Public venues visited by confirmed COVID-19 cases]

Region	Type	Name and address	Date		Time
Seoul	Singing room	Gawang Coin Karaoke (Seoul Nowon-gu Dobong-ro 468 Hongik Building)	5/7	21:37~22:10	-
Seoul	Singing room	Byeolbyeol Coin Karaoke (Seoul Gwangak-gu Gwangak-ro 200)	5/4	20:35~21:19	-
Seoul	Singing room	Rock-Q Coin Karaoke (Seoul Mapo-gu Hongik-ro-6-gil 10)	5/6	15:23~16:16	-
			5/7	19:00~19:20	-
Seoul	Amusement facility	1943 Hongik Univ. Branch (Seoul Mapo-gu Jandari-ro 8-6)	5/7	19:30~21:30	17:00~05:00
		Hansin Pocha (Seoul Mapo-gu Jandari-ro 13)	5/7	21:50~23:20	17:00~07:00
Seoul	Amusement facility	Holics (Seoul Seocho-gu Seochodaero-77-gil 24)	5/9	20:00~00:11	16:00~06:00
Seoul	Singing room	SBS Singing Room (Seoul Seocho-gu Seochodaero-77-gil 31)	5/9	00:36~01:36	-
Seoul	Amusement facility	Akbari (Seoul Seocho-gu Seochodaero-77-gil 39)	5/10	01:50~03:42	-
Seoul	Restaurant	Illu Duck (Seoul Seongdong-gu Seongsuilro-8-gil 40)	5/11~5/21		11:00~23:00
Seoul	Restaurant	Igane Grilled Tripe (Seoul Seongdong-gu Geumghodong-3-ga 423)	5/17	17:00~18:40	14:00~01:00
Seoul	Restaurant	Chamnara Charcoal BBQ Geumho Branch (Seoul Seongdong-gu Dokseodang-ro 325-2)	5/17	18:56~20:18	15:00~01:00
Seoul	Amusement facility	Geumho 7080 Bar (Seoul Seongdong-gu Geumho-ro 86, B1)	5/17	20:40~22:10	-
Seoul	Restaurant	Jangsu Ginseng Chicken Soup (Seoul Jongro-gu Jongro-31-gil 46-3)	5/18	17:27~19:15	-
Seoul	Other	Biblical Language Studies (Grace Methodist Church / Hwado Uri Church / Uijeongbu Jusarang Church: Uijeongbu-si Taepyeong-ro 212)	5/8, 5/15		-
Seoul	Amusement facility	Byeolbam Pocha (Seoul Yongsan-gu Hangangdaero-87-gil 7)	5/4	19:50~22:30	-
Daegu	Singing room	Ban Ban Coin Karaoke (Gongi ban sori ban) (Daegu Dalseo-gu Gyedaedongmun-ro 2, B1)	5/11	23:28~24:3	10:00~05:00
Daegu	Singing room	Tongtong Coin Singing Room (Daegu Jung-gu Dongseongro-2-gil 45)	5/12	17:40~17:55	11:00~01:00
Daegu	Cafe	Asura Balbalta (board game cafe) (Daegu Jung-gu Dongseongro-5-gil 53)	5/18	17:38~19:44	24 hours
Daegu	Cafe	Golbang (comic book cafe) (Daegu Jung-gu Dongseongro-5-gil 53)	5/17	18:45~19:55	10:00~01:00
Daegu	Singing room	Rock-Q Coin Karaoke (Dongseongro No 2 Branch) (Daegu Jung-gu Dongseongro-6-gil 42)	5/18	21:00~21:37	11:00~06:00
Daegu	Singing room	Seven Star Coin Karaoke (Daesil Station Branch) (Dalseong-gun Dasa-eup Dalgubeol-daero 863)	5/14	15:04~16:22	-
Daegu	PC cafe	NU PC (Sinwalseong Branch) (Dalseo-gu Joamro-6-gil 6-45 Daehyeong Building Floor 3)	5/23	20:08~00:44	-
Incheon	PC cafe	Jin PC Room (Incheon Michuhol-gu Dokbae-ro 311 Vision Plaza)	5/6	15:16~19:26	-
Incheon	Singing room	Top Coin Singing Room (Incheon Michuhol-gu Dokbae-ro 311 Vision Plaza)	5/6	20:00~21:00	-
Gyeonggi	Other	Fiesta 9 (Gyeonggi Gooyang-si Ilsanseo-gu Ilhyeong-ro 97-11 Ilsan Doosan We've The Zenith Square B2)	5/16	13:00	11:30~21:00
Gyeonggi	Other	Laon Party House (Gyeonggi Bucheon-si Buil-ro 223 B1)	5/9, 5/10, 5/17		11:30~19:00
Gyeonggi	Other	MERIT Night Club (Gyeonggi Bucheon-si Gilju-ro 125)	5/9~5/10	23:48~00:34	20:00~05:00
Gyeonggi	Amusement facility	Baobap (Bucheon Sangdong Branch) (Gyeonggi Bucheon-si Songnaedaero-2650-beongil 59)	5/10	00:44~02:03	15:00~05:00
Gyeonggi	Singing room	Junco Music Town (Bucheon Sangdong Branch) (Gyeonggi Bucheon-si Gilju-ro 121-beongil 18-3)	5/10	02:09~03:55	18:00~09:00
Gyeonggi	Amusement facility	Jakuwa (Gyeonggi Anyang-si Manan-gu Jangnaero 1430-beongil 15)	5/14	18:00~23:30	17:00~08:00
			5/15	19:00~23:40	
			5/17	18:00~22:00	
Gyeonggi	Other	Music Home Orchestra (Gyeonggi Yongin-si Giheung-gu Guseong-ro 357 Bldg B Floor 2)	5/19		-
Gyeongbuk	Other	Saemaeul Jungang Market 91st stand (selling cheonggukjang) (Gyeongbuk Gumi-si Gumijungangro-9-gil 11)	5/18~5/22		07:00~18:00
Gyeongbuk	Other	Saemaeul Jungang Market 42nd stand (selling vegetables) (Gyeongbuk Gumi-si Gumijungangro-9-gil 11)	5/18~5/22		07:00~18:00
Gyeonggi	Bath house	Daeyang Hot Springs Land (Gyeonggi-do Bucheon-si Gilju-ro 115)	5/17	09:03~13:47	-
			5/20	11:06~12:41	
Gyeonggi	Place of business	Coupang Fulfillment Services Co, Ltd. (Gyeonggi Bucheon-si Sinheungro-511-beon-gil 80)	5/12~5/25		

*Newly added places are highlighted in color